



November 2, 2023

**Millbrae and Burlingame Shoreline Area
Protection and Enhancement Project**

EIR Public Scoping Meeting

Agenda

- 1. Welcome by Donna Colson, Burlingame Vice Mayor & OneShoreline Board member**
- 2. Presentations by Rincon Planning Director Kelsey Bennett and OneShoreline Project Manager Makena Wong**
- 3. Receipt of verbal public comments on the scope of the EIR**
- 4. Q&A at project posters**

EIR Scoping Meeting Purpose



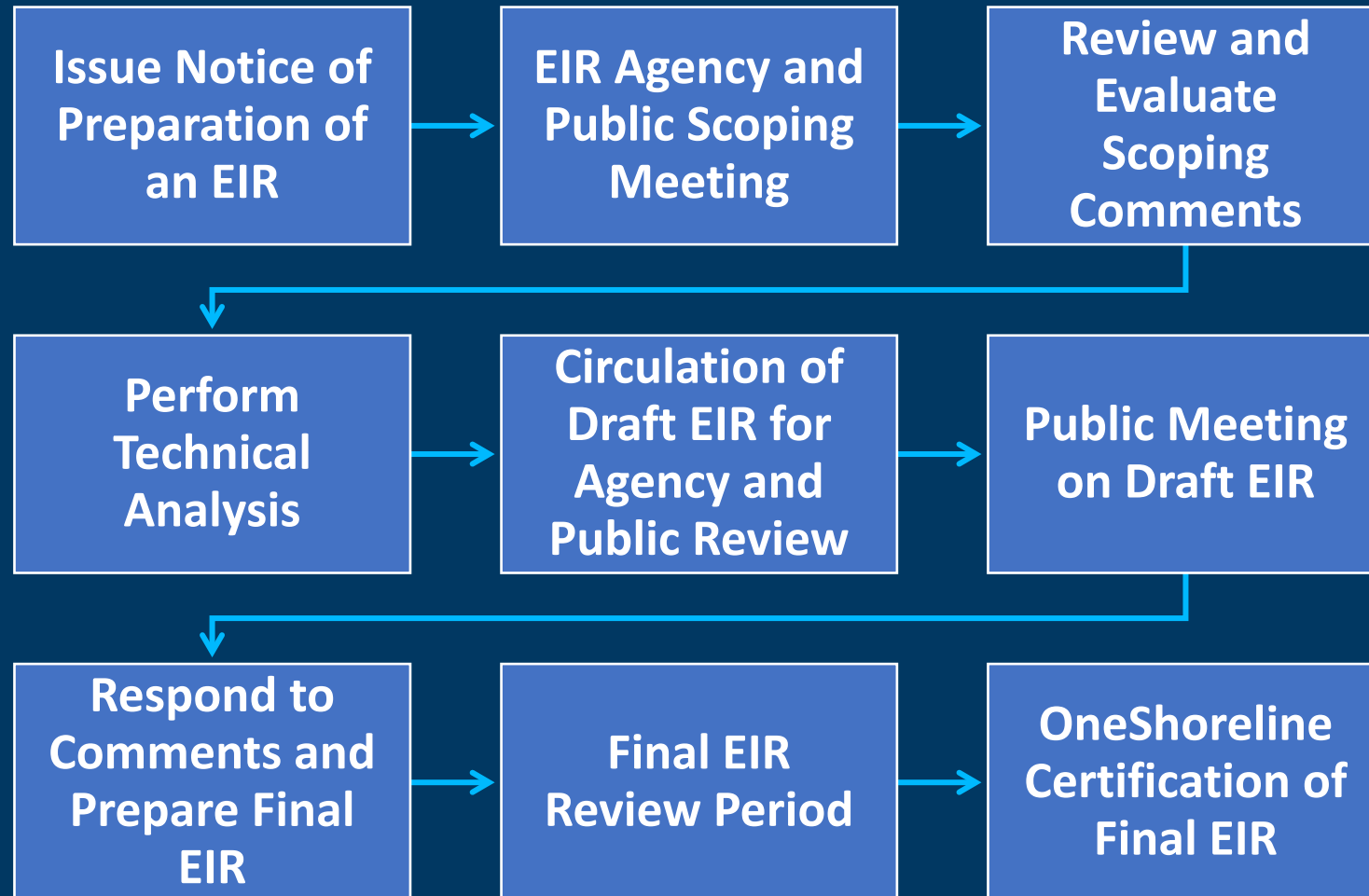
- **Inform the community & interested agencies about the proposed project**
- **Solicit input regarding the scope of the EIR (no decisions concerning the proposed project will be made at this meeting)**
- **Inform the community about future opportunities for input**

Regulatory (CEQA) Purpose



- **State the CEQA Lead Agency**
- **Disclose the significant environmental effects of proposed project**
- **Identify ways to avoid or reduce environmental impacts**
- **Consider feasible alternatives to the proposed project**
- **Enhance public participation in the planning process**

CEQA Steps & Opportunity for Public Input



CEQA Steps & Opportunity for Public Input

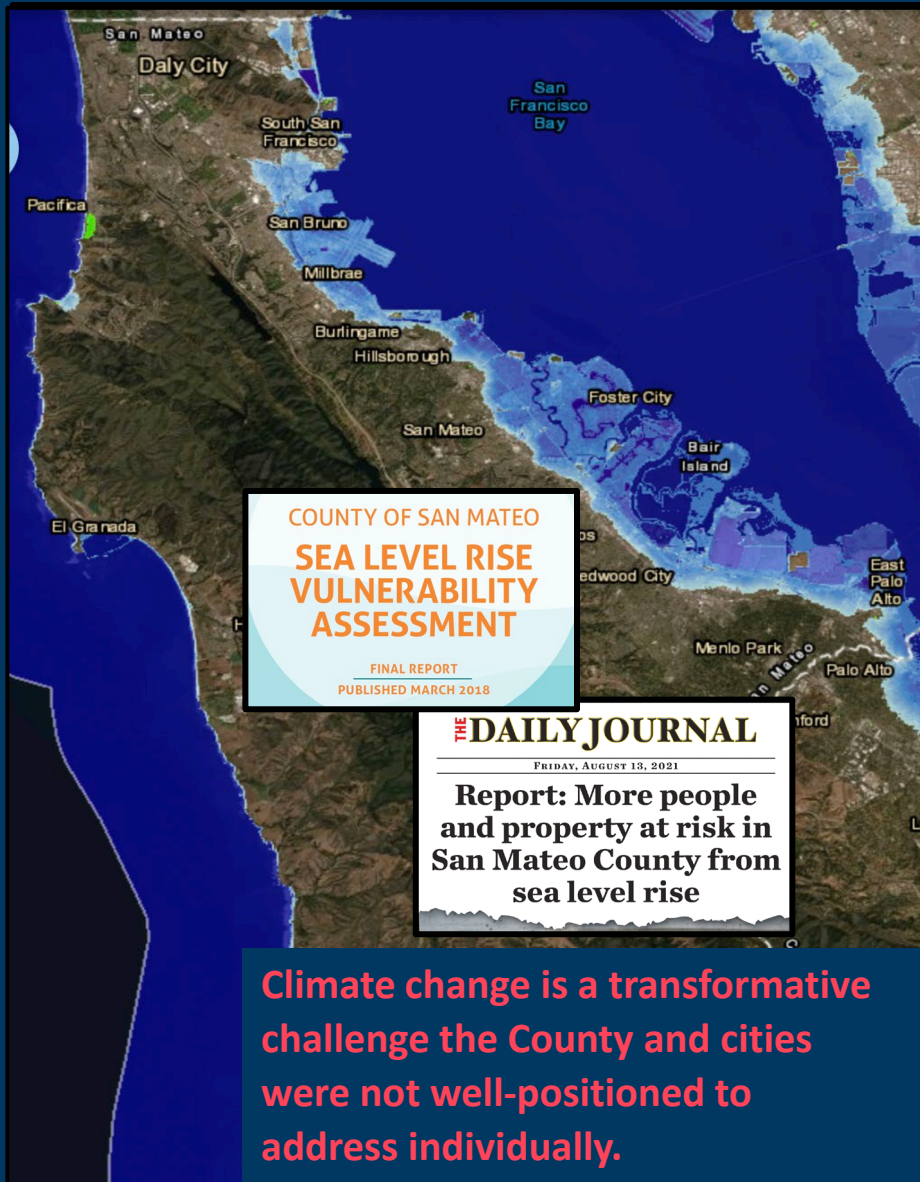


**EIR Notice of Preparation available at:
OneShoreline.org/Projects/Millbrae-Burlingame**

**EIR Public Scoping Comment Period:
October 10 – November 15, 2023**

**EIR Public Scoping Meeting:
November 2, 2023 at 7:00 p.m.
Burlingame Community Center, 850 Burlingame Avenue**

CEQA Lead Agency Background



A long-standing Flood Control District collected taxes and worked in 10% of the county and Bay shoreline and along none of the Pacific coastline

State legislation established OneShoreline on January 1, 2020 as the first independent government agency in CA to build resilience to the water-related impacts of climate change.

OneShoreline takes a holistic approach to:

THREATS

flooding, sea level rise, coastal erosion, stormwater

GEOGRAPHY

Collaboration between jurisdictions and asset owners

OBJECTIVES

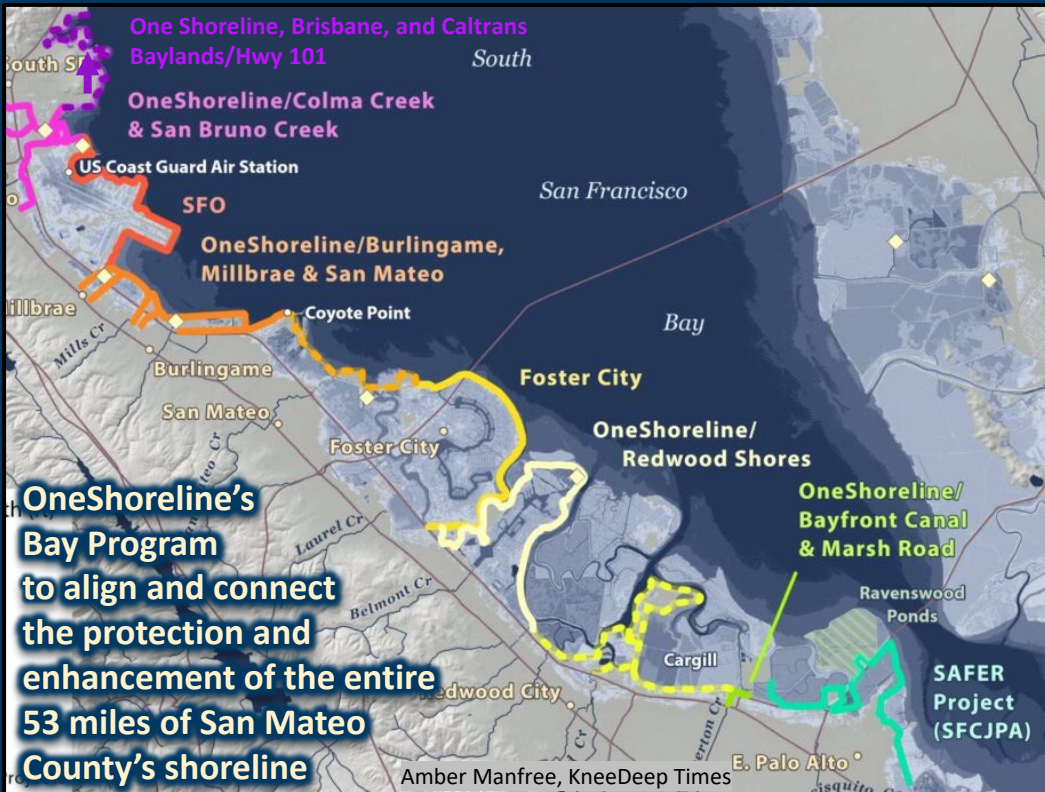
flood protection, habitat, recreation, connectivity, community enhancement

CEQA Lead Agency Background

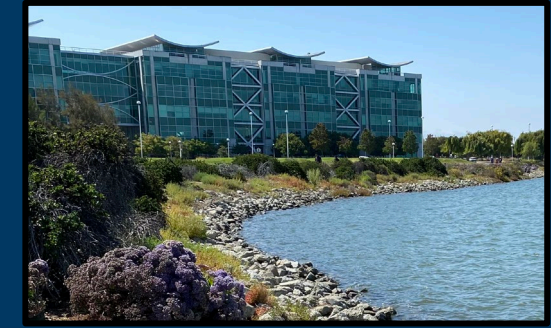


OneShoreline Priorities

PROJECTS: Build aligned protection/enhancement across jurisdictions that is complemented by land use that promotes resilience to future conditions



PLANNING: Work with cities on their planning policies and documents, as well as on project reviews, to build site-specific resilience that contributes to regional resilience



STORMS: Alert people to, and reduce the impacts of, climate-driven atmospheric rivers



SUSTAINABILITY OF THE EFFORT: Develop ongoing funding streams, including from private sector beneficiaries, and have all sectors see climate resilience as their issue

Project History



King Tide,
Costco, South
San Francisco



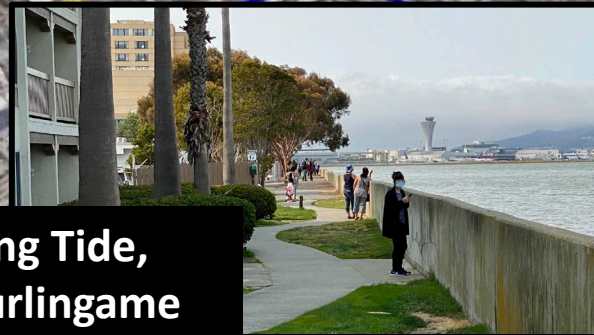
Atmospheric
River + High
Tide, 7th Ave,
San Bruno



Atmospheric
River, Landing
Lane, Millbrae



King Tide,
Burlingame



The Big Picture around SFO



SFO
SFO planned
Bayside protection

OneShoreline protection
leverages and connects
to SFO's project

Project Objectives

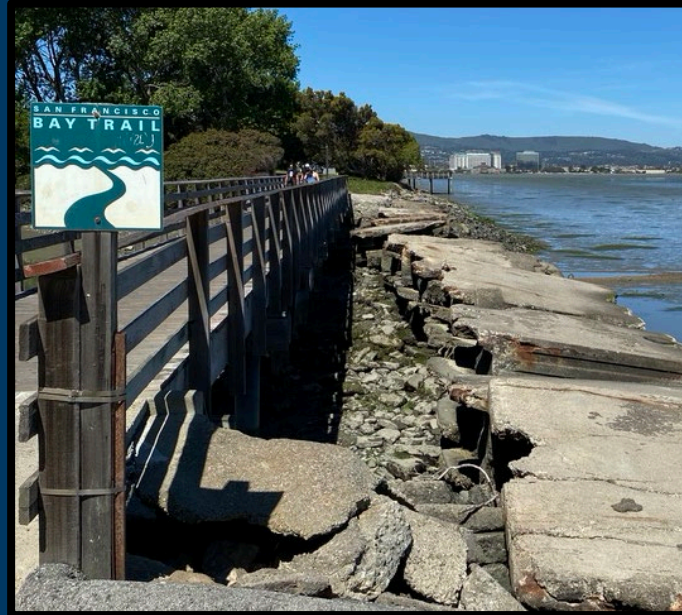


Coastal Flood Protection



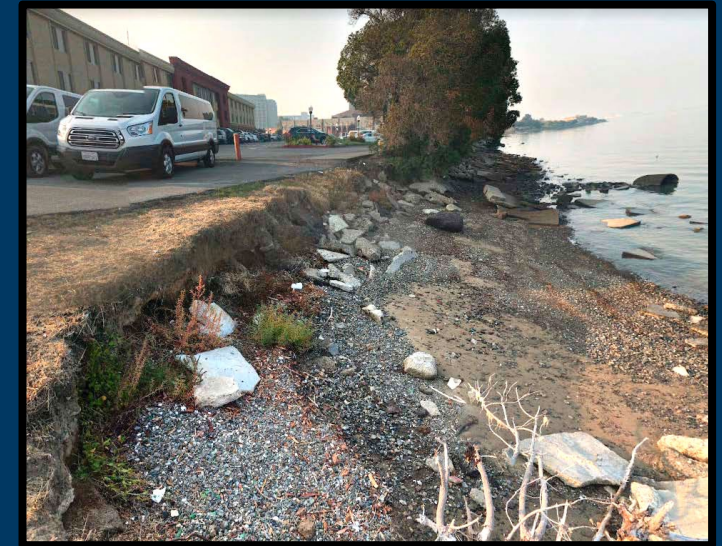
Protect areas along the shoreline and nearby creeks and lagoons against current coastal hazards and substantial sea level rise

Public Access and Recreation



Enhance the shoreline area experience today and in the future

Habitat



Promote healthy and sustainable ecosystems proximate to the Bay shoreline

Project Coastal Flood Protection Benefits



- Protects shoreline against higher Bay water levels from sea level rise, storm surge, and waves
- Keeps the higher Bay water levels from creeks
- Completes regional studies to inform future work and each city's Storm Drain Master Plan

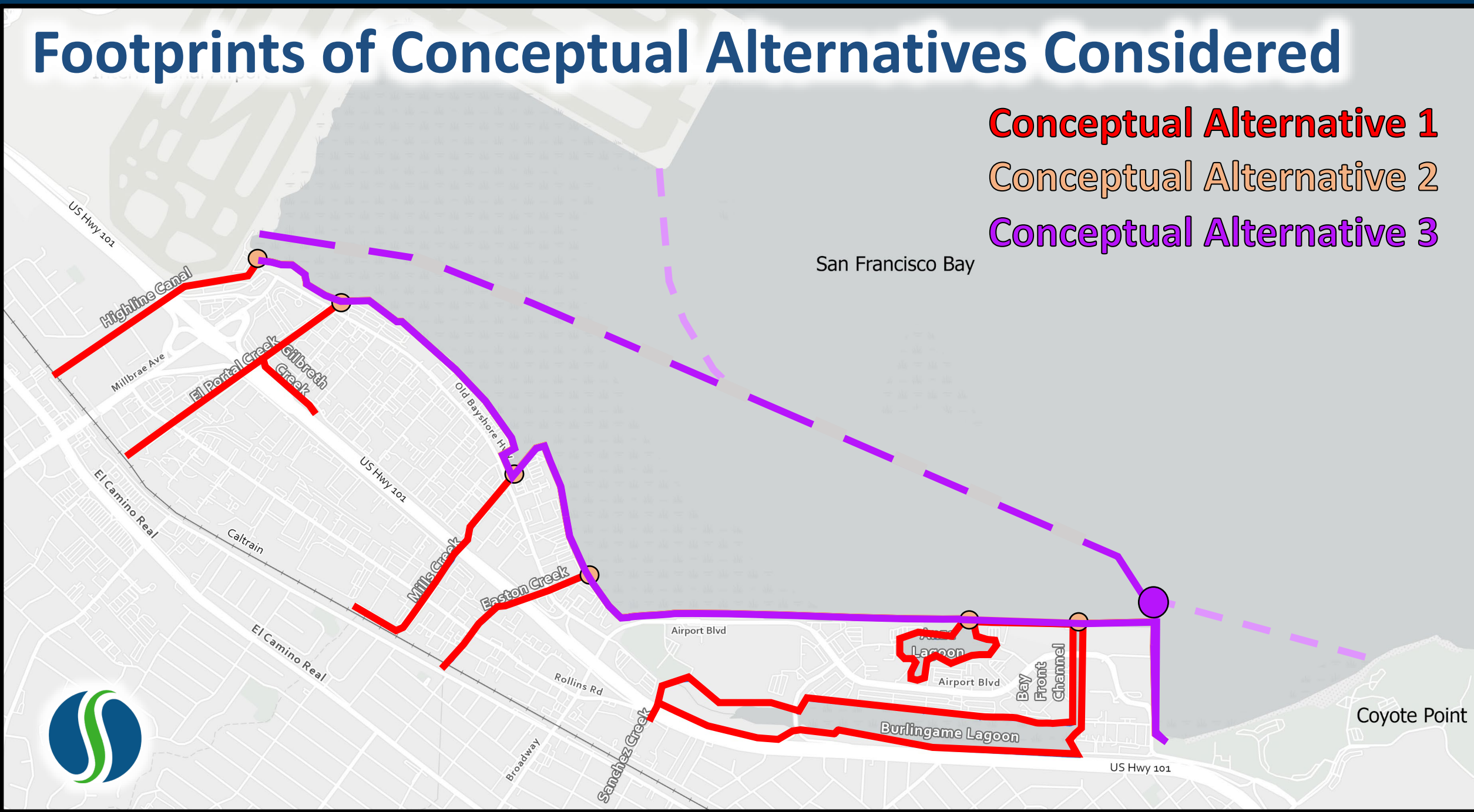


Footprints of Conceptual Alternatives Considered

Conceptual Alternative 1

Conceptual Alternative 2

Conceptual Alternative 3



Conceptual Alternatives Feasibility Analysis



Analysis Purpose: Preliminarily assess the feasibility of 3 conceptual alternatives...

Conceptual Alternative 1

*Shoreline and
Creek Barriers*

Conceptual Alternative 2

*Shoreline Barriers
with Tide Gates*

Conceptual Alternative 3

*Offshore Barrier
with Tide Gates*

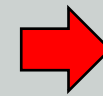
...according to the following 9 criteria:

Ability to Meet Project Objectives | Potential Regulatory Preferences | Technological, Economical, and Logistical Feasibility | Land Use Impacts | Preliminary Environmental Effects | Other Beneficial Uses | Geotechnical Considerations | Impacts to Local Residual Flooding | Adaptive Management




Takeaways:

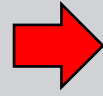
- Conceptual Alternative 1 was deemed infeasible.
- Conceptual Alternative 3 was recommended for further evaluation through the CEQA process.
- Therefore, Conceptual Alternative 3 is the Proposed Project, and Conceptual Alternative 2 will also be assessed as an EIR alternative.

Proposed Project Features




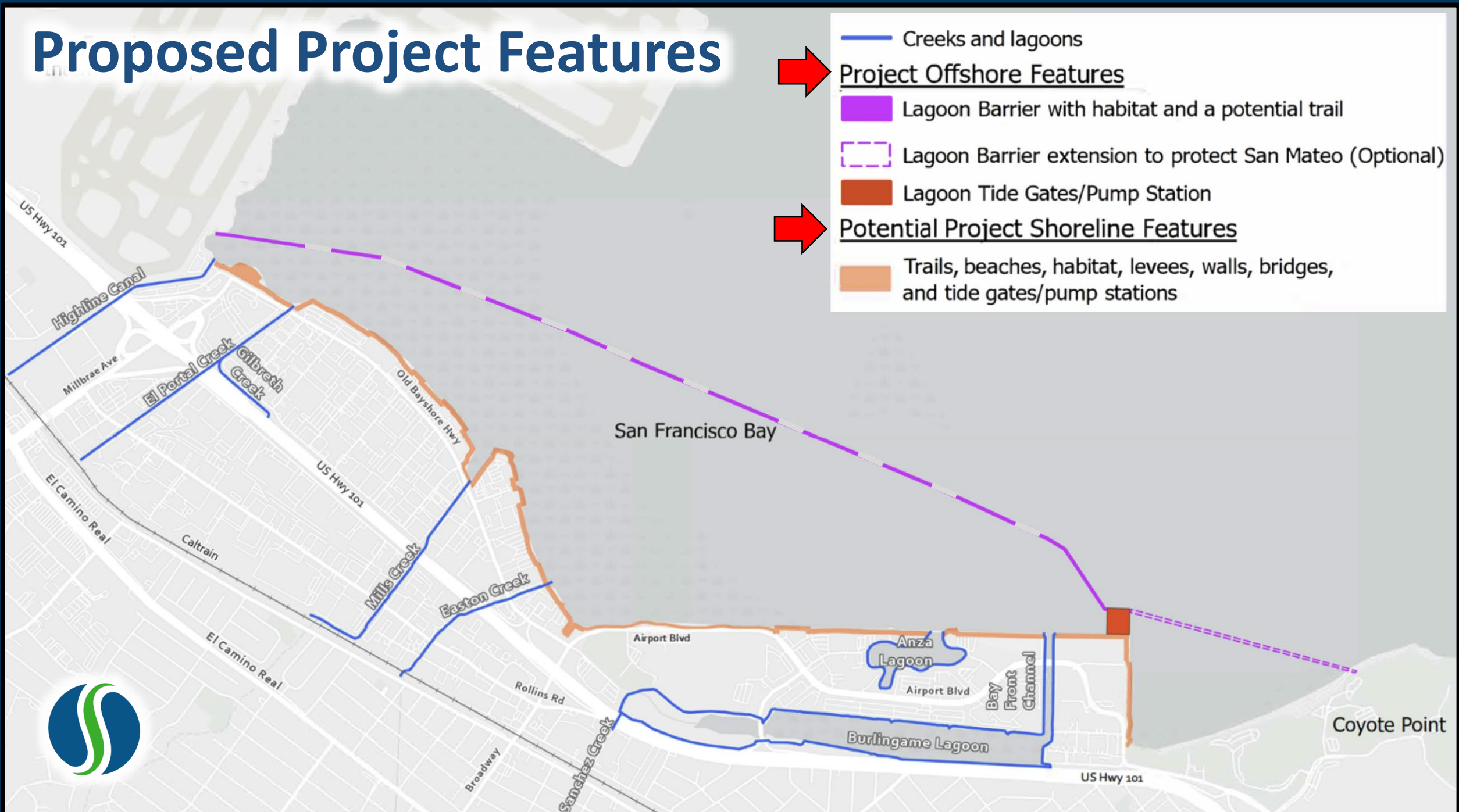
Project Offshore Features

-  Lagoon Barrier with habitat and a potential trail
-  Lagoon Barrier extension to protect San Mateo (Optional)
-  Lagoon Tide Gates/Pump Station



Potential Project Shoreline Features

-  Trails, beaches, habitat, levees, walls, bridges, and tide gates/pump stations





- **Project EIR – project-level evaluation to cover proposed project components**
- **Analysis will be topic-specific based on proposed location and components**
- **Focus on reasonably foreseeable direct and indirect physical environmental effects that could result from construction and operation of the proposed project**
- **EIR Alternatives will be evaluated and considered in a CEQA-required order of magnitude compared to proposed project analysis**

Topics to be Analyzed in the EIR



- Aesthetics
- Air Quality
- Biological Resources
- Cultural Resources
- Energy
- Geology and Soils
- Greenhouse Gas Emissions
- Hazards and Hazardous Materials
- Hydrology and Water Quality
- Land Use and Planning
- Noise
- Public Services
- Recreation
- Transportation
- Tribal/Cultural Resources
- Utilities & Service Systems
- Wildfire

Projected EIR Schedule



- **November 15, 2023**
 - **End of Public Comment period on the scope of the EIR**
- **Fall 2024**
 - **Anticipated release of Draft EIR for public review/comment and Draft EIR public meeting(s)**

Public EIR Scoping Comments



We welcome your comments.

By November 15, 2023 at 11:59 p.m., submit written NOP comments to:

Makena Wong, OneShoreline Project Manager

1700 S. El Camino Real, Suite 502, San Mateo, CA 94401

or via email to: Projects@OneShoreline.org

Please include “EIR Scoping Comment: Millbrae and Burlingame Shoreline Area Protection and Enhancement Project EIR” in the subject line.

For more information, visit: [OneShoreline.org/Projects/Millbrae-Burlingame](https://www.oneshoreline.org/projects/millbrae-burlingame)

Public EIR Scoping Comments



Thank you

**Now we are taking
Public Comments on
the Scope of the EIR**

