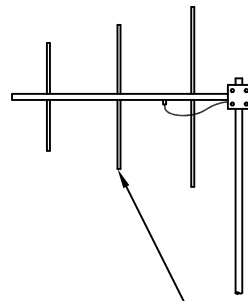


21' AFG
APPOX.

OMNI DIRECTIONAL ANTENNA

General Notes:

1. PT conduit may be surface mounted if burying is not suitable for site.
2. System grounded through 8' grounding rod.
3. Standpipe access door to be above 100 year flood level. Doorless optional.



OPTIONAL DIRECTIONAL ANTENNA

SOLAR PANEL

1-1/4" EMT CONDUIT MAST
POWDER COATED

RAIN GAUGE SECTION

Ø12" ALUMINUM STANDPIPE -
POWDER COATED

LOCKING ACCESS DOOR

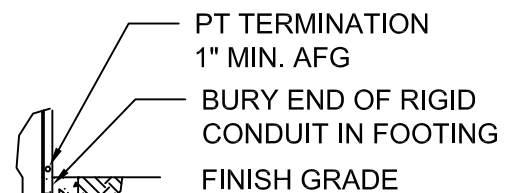
RIGID CONDUIT FROM
STANDPIPE TO PT
ACCESS BOX

Ø24" x 36" DEEP
CONCRETE FOOTING

FINISH GRADE

8' GROUND ROD

OPTIONAL PT TERMINATION @ FOOTING



EXPOSED CONDUIT TIED
TO SOLID STRUCTURE

ACCESS BOX FOR
PT SERVICE

1-1/4" RIGID CONDUIT
PT HOUSING

LEGEND

Symbol	Description
PT	Pressure Transducer
AFG	Above Finish Grade
BFG	Below Finish Grade



High Sierra Electronics
GRASS VALLEY, CALIFORNIA

TITLE: Master Gauging Station – Standpipe			
STANDARD DETAIL		REV. A	DRAWING NO.:
DRAWN BY: DAT		DATE: 2/10/2010	00-13347-00
SIZE: A	SCALE:	APPROVED BY:	SHT. NO.: 1 OF 4