



September 14, 2020

**San Mateo County
Flood and Sea Level Rise
Resiliency District**

Board of Directors Meeting

AGENDA

September 14, 2020 4:00 PM

1. **Roll Call**
2. **Public Comment** This item is reserved for persons wishing to address the Board for up to two minutes on any District-related matters not listed on this agenda. Public comments for up to two minutes on matters listed on the agenda shall be heard at the time the matter is called.
3. **Action to Set the Agenda**
4. **Approval of Consent Agenda:** Minutes of August 10, 2020 District Board Meeting (ACTION)
5. **Regular Business**
District membership in the Association of California Water Agencies (ACWA) and District enrollment in the ACWA Joint Powers Insurance Authority for employee health, dental, vision, and other benefits effective January 1, 2021 (ACTION)
6. **Chair's Report ***
7. **CEO's Report: on grants and on the following project areas (and benefitting jurisdictions) ***
 - Bayfront Canal & Atherton Channel (Atherton, Menlo Park, Redwood City, San Mateo County)
 - Belmont Creek (Belmont, San Carlos, San Mateo County)
 - Colma Creek (Colma, Daly City, Pacifica, San Bruno, San Mateo County, and South San Francisco)
8. **Board Member Reports ***
9. **Items for a Future Agenda**
10. **Adjournment**

Agenda item 5 – District membership in the Association of California Water Agencies and enrollment in the ACWA Joint Powers Insurance Authority for employee health, dental, vision and other benefits effective January 1, 2021 (ACTION)

Association of California Water Agencies:

- with over 430 members, it's the largest association of water agencies in the country
- develops water supply, flood protection, and climate resilience policies on the state and federal levels
- has spun off its insurance programs to the ACWA JPIA, but membership in ACWA is a requirement of joining the JPIA



Agenda item 5 – Association of California Water Agencies Joint Powers Insurance Authority

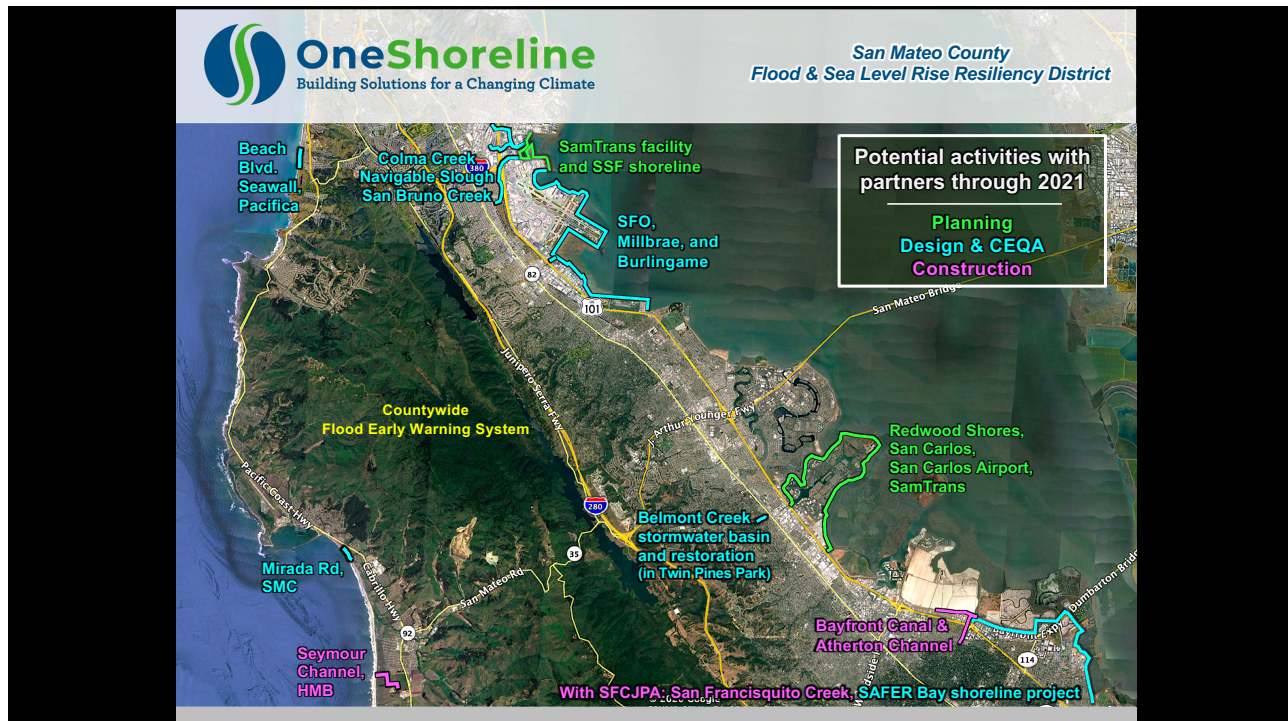
- The ACWA JPIA is a risk-sharing pool of over 360 ACWA members
- Employees offered more options for health, vision, dental insurance, including in-network, at a reduced cost; and access to pooled life insurance and employee assistance program
- District gains access to reduced rates for property, liability, and worker’s compensation insurance, and for HR and risk management support
- District currently covers 75% of health, dental and vision premium costs. With the ACWA JPIA, District must cover 100% of the lowest cost plans offered. If an employee chooses a higher cost plan, the District would pay 75% of the incremental amount.
- Total FY20-21 cost of the District of joining ACWA and ACWA JPIA is about \$3,400 and within the approved budget amount for these items.



Agenda item 7 - CEO’s Report

- Overview of project activities
- FEMA funding opportunity
- Bayfront Canal and Atherton Channel
- Belmont Creek
- Colma Creek





FEMA funding opportunity

- BRIC is a new FEMA pre-disaster hazard mitigation program
- Stated priorities: innovative partnerships, large infrastructure projects, multiple benefits to a community including nature-based solutions
- Due Dates: Notice of Interest: 9/18/2020 | Application: 12/03/2020
- Two programs under BRIC support *Mitigation Projects* and *Capability-and-Capacity Building (C&CB) Activities*
- The District hopes to apply for C&CB funding for project scoping activities

District is working on *potential* NOIs for Project Scoping of two areas:

Shoreline around Redwood Shores:

- District as Lead Agency working with RWC, San Carlos, County, and SamTrans to avoid the area being included within a new FEMA 100-year flood zone and to protect against SLR.
- Activities: Assess the problem and a Feasibility Study of alternatives.

Shoreline and creeks impacting Burlingame, Millbrae and SFO:

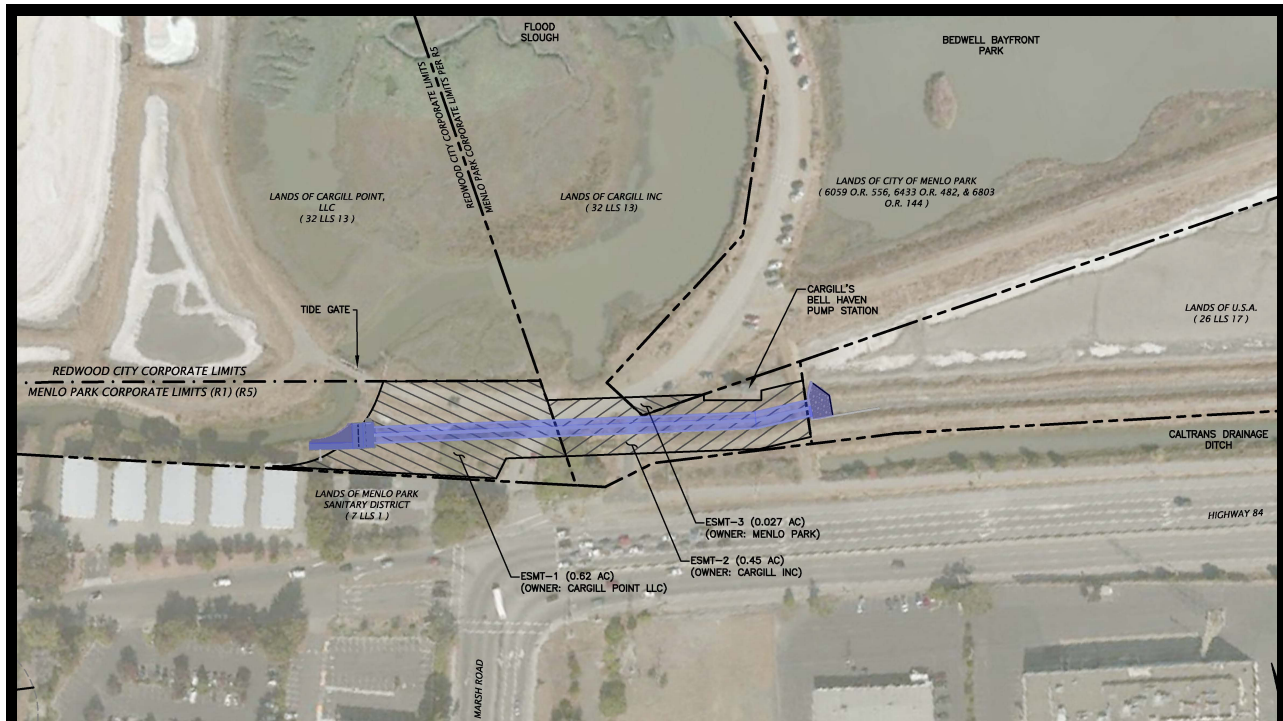
- Align and advance recent efforts by these entities to provide flood and SLR protection.
- Activities: Address data gaps related to combined fluvial and Bay water levels, elevation surveys, and land use; Develop an early (10%) engineering design; Create visual aids for local and regulatory stakeholders; Develop a plan for necessary land rights; Develop a draft Project Description and description of alternatives for CEQA compliance.



Bayfront Canal and Atherton Channel Project

- Construction MOU discussions to reconcile comments among partners
- Cargill is currently reviewing comments by the partners to amend a 1952 easement; separate temporary and permanent easements are only between Cargill and the District
- The Right-of-Way Permit application with the US Fish & Wildlife Service Refuge will be submitted to the Refuge this week.
- The operations plan for the diversion structure and Refuge's water control structures is being developed in coordination with the Refuge, Redwood City and Menlo Park.
- Environmental permits (CDFW, RWQCB, BCDC, USACE, USFWS, NMFS):
All agency representatives have received final application submittal documentation and responses to inquiries. USFWS and RWQCB have been silent recently.





Belmont Creek Project Restoration, Water Quality Improvement, and Flood Protection Project in Twin Pines Park

- Project to restore the Creek, and create a stormwater detention basin system under the Park parking lots to improve water quality, groundwater recharge, and reduce downstream sedimentation and flooding.
- An Agreement to funding and responsibilities to complete design, CEQA and permitting has been reviewed by the District and City of Belmont, and is being reviewed now by San Carlos and the County.
- The District intends to release an RFP for this work before the end of this month.
- Grant funds have been awarded for both project components
 - Department of Water Resources' Urban Streams Restoration Program - \$1,000,000 for construction of the restoration component
 - CA Natural Resources Agency (through C/CAG) - \$913,334 for design, CEQA and permitting of the stormwater basin component



Transforming Colma Creek from a Liability into an Asset

A holistic approach to the:

- Threat – sea level rise & extreme storms brought by climate change
- Objectives – reduce those threats and turn waterways and shorelines into environmental and recreational assets that are integrated into communities.
- Geography – projects planned and implemented within the context of all jurisdictions in the watershed or regional shoreline

Consistent with this philosophy is the District shorthand name: OneShoreline

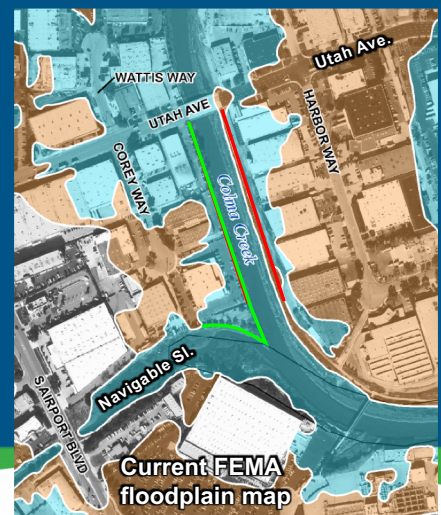
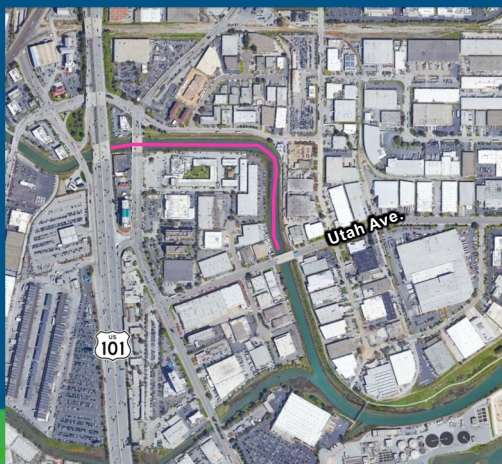
How does this approach translate into our activities? We will:

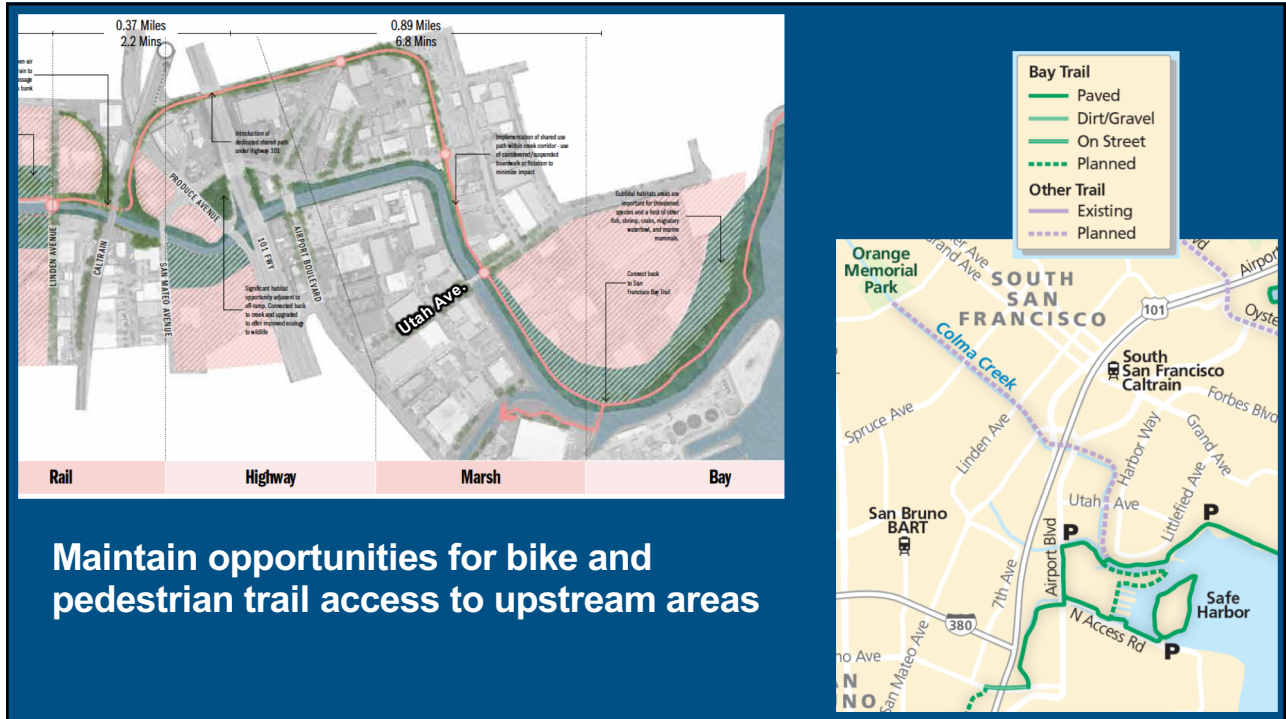
- Develop projects with the objective of protecting against a 100-year storm and SLR, in the context of the entire watershed / shoreline
- Look for opportunities to work with private and public landowners to achieve mutual objectives
- Look for opportunities to replace grey infrastructure with green infrastructure
- Look for opportunities to incorporate recreation and connectivity
- Focus on all areas of the watersheds and shoreline



What this new approach means for Colma Creek

- Moving forward: improvements/repairs to discharge pipes Hwy. 101 to Utah Ave.
- Modify a floodwall project downstream of Utah Ave.





What this new approach means for Colma Creek

Look for opportunities to work with private and public landowners to achieve mutual objectives, replace grey infrastructure with green infrastructure, and incorporate recreation and connectivity



Next Scheduled Board meeting

October 26, 2020 at 4:00 pm



OneShoreline.org