



**Colma Creek
Advisory Committee
September 8, 2020 Meeting**

**San Mateo County Flood & Sea Level Rise
Resiliency District
Len Materman, CEO**



AGENDA

- I. **Roll Call**
- II. **Approve minutes of September 10, 2019 and December 10, 2019 meetings**
- III. **Public Comment**
- IV. **San Mateo County Flood & Sea Level Rise Resiliency District – Presentation / Discussion**
- V. **Projects (summarized in the attached handout and open for discussion)**
 - El Camino Box Culvert and Mission Road Diversion Structure
 - Colma Creek Improvements between Spruce and San Mateo Avenues
 - Mitigation Sites Downstream of Utah Avenue
 - Maintaining the Existing Channel
 - The Channel Wall Project at Produce Avenue
 - Utah Avenue to Navigable Slough
 - Multi-jurisdictional Regional Stormwater Capture Project at Orange Memorial Park (SSF and San Mateo Countywide Water Pollution Prevention Program)
 - Colma Creek Technical Advisory Committee (TAC)
- VI. **Discussion items**
 - Advisory Committee Members – Updated Member List and Terms
- VII. **Action Item**
 - Approve 2020 Committee meeting dates: March 10, June 9, September 8, December 8
- VIII. **Adjournment**

NEXT MEETING – Tuesday, December 8, 2020, 3:00 p.m.

Meeting Objectives

Introduce new Flood and Sea Level Rise Resiliency District

Answer questions about the new District and its ongoing and potential projects

Approve minutes and final 2020 meeting date

Flood protection along Colma Creek – The Historical Context

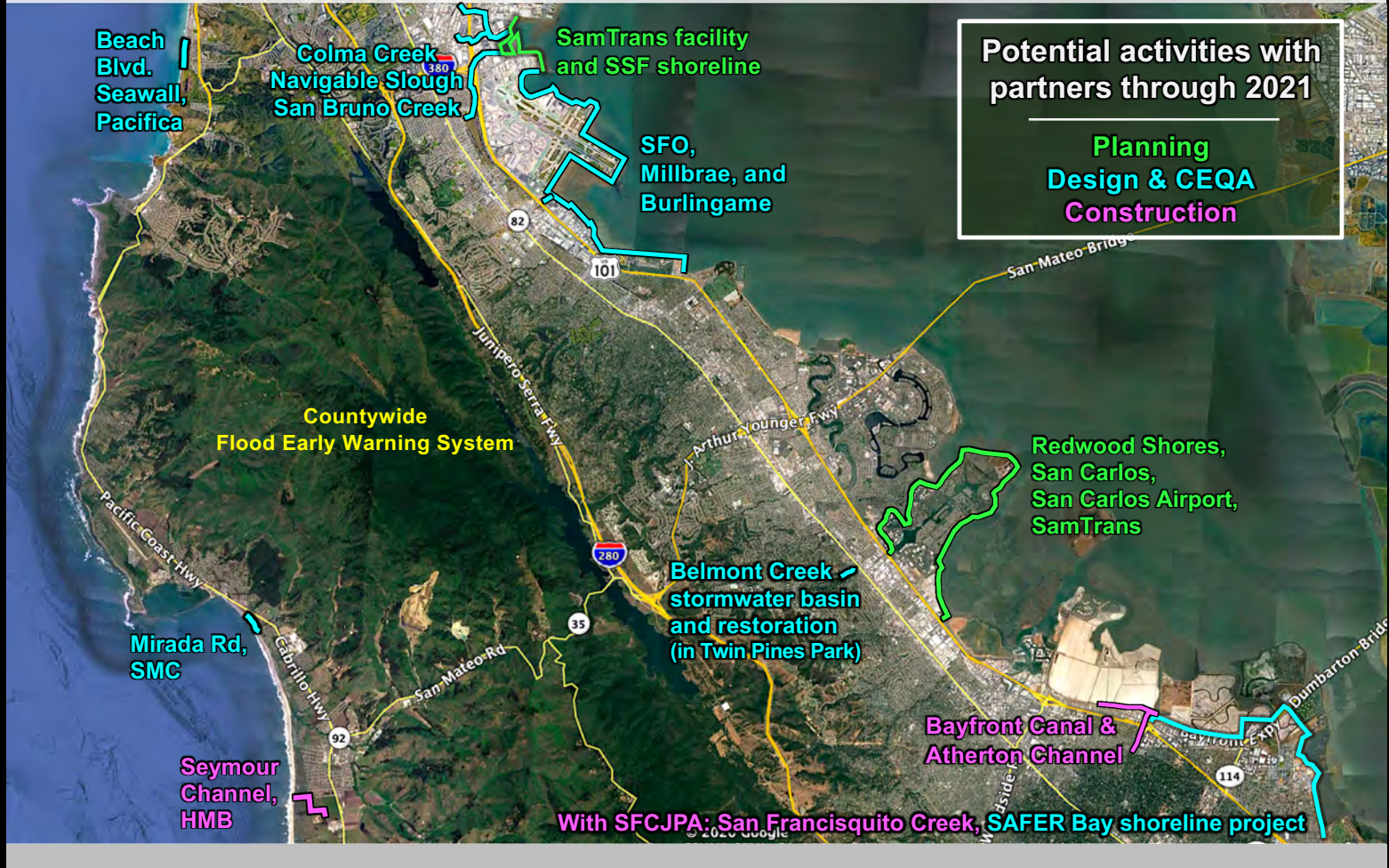
- **San Mateo County Flood Control District established by State legislation in 1959 with the objective of reducing flooding.**
- **Colma Creek was seen a liability, a threat that must be controlled.**
- **Over its 60 years, the Flood Control District's Colma Creek zone has largely achieved (and maintained) its objective. Now, upstream of Utah Avenue, people and property are protected against a 50-year storm event with 2 feet of freeboard.**
- **On January 1, 2020, the Flood Control District became part of the new countywide Flood & Sea Level Rise Resiliency District.**

Transforming Colma Creek from a Liability into an Asset

A holistic approach to the:

- **Threat** – sea level rise & extreme storms brought by climate change
- **Objectives** – reduce those threats and turn waterways and shorelines into environmental and recreational assets that are integrated into communities.
- **Geography** – projects planned and implemented within the context of all jurisdictions in the watershed or regional shoreline

Consistent with this philosophy is the District shorthand name: **OneShoreline**

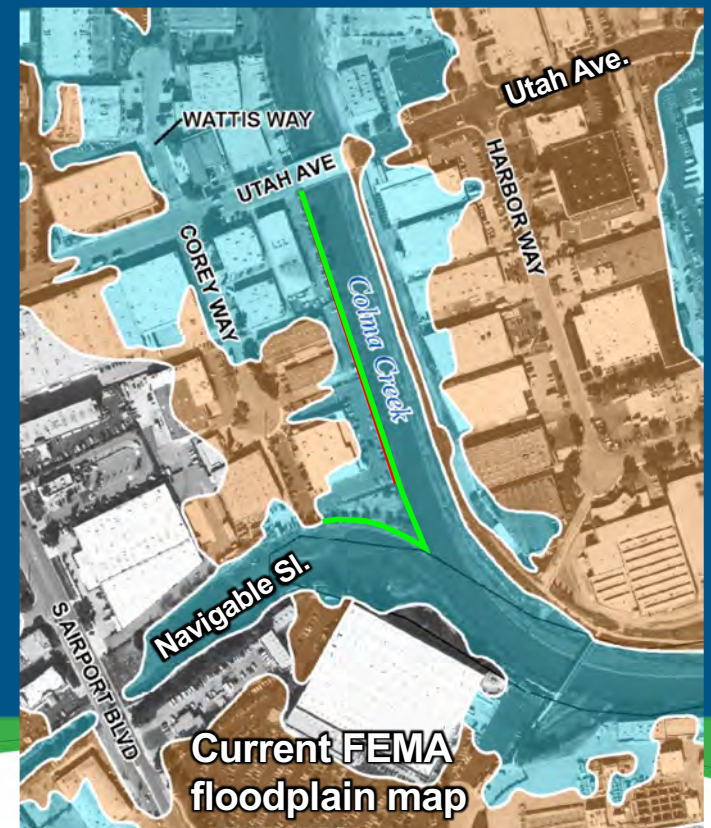
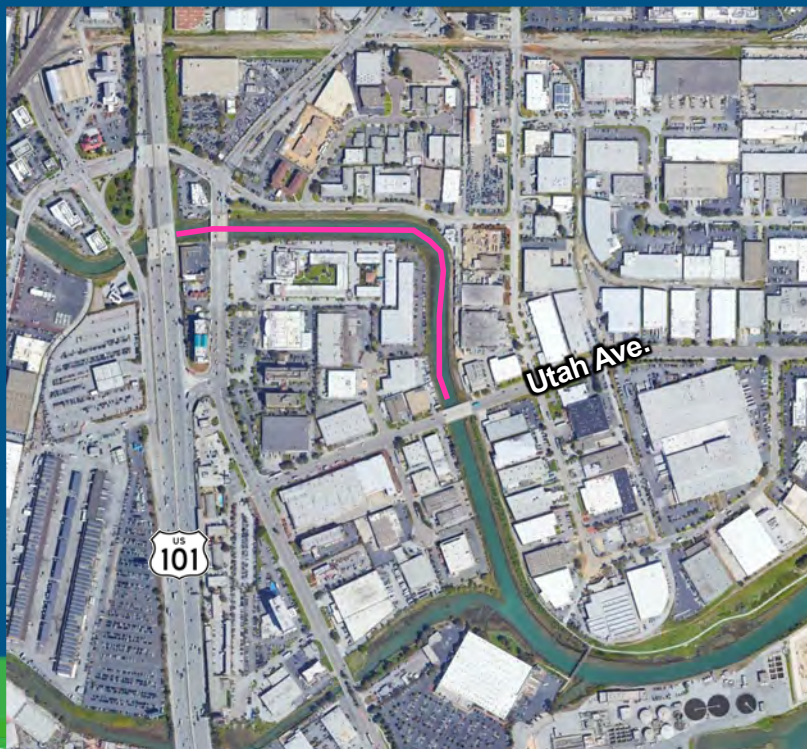


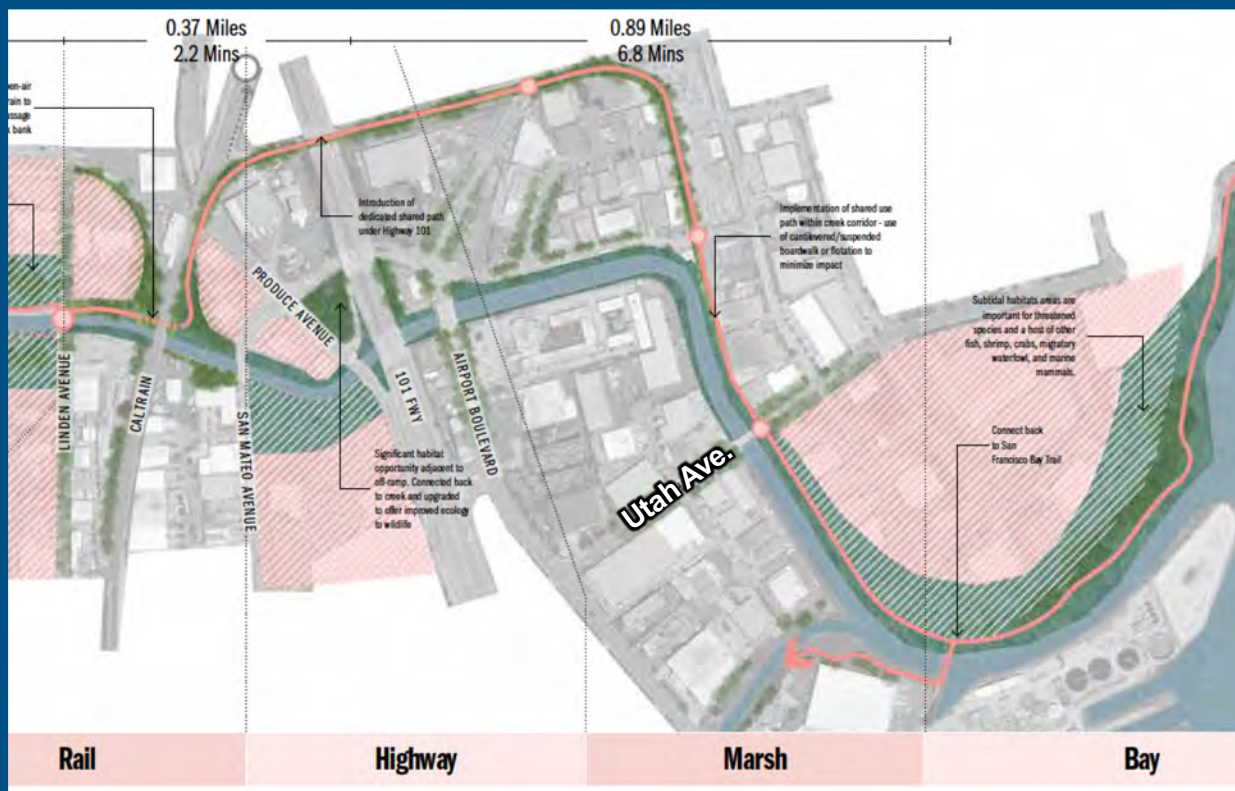
How does this approach translate into our activities? We will:

- **Develop projects with the objective of protecting against a 100-year storm and SLR, in the context of the entire watershed / shoreline**
- **Look for opportunities to work with private and public landowners to achieve mutual objectives**
- **Look for opportunities to replace grey infrastructure with green infrastructure**
- **Look for opportunities to incorporate recreation and connectivity**
- **Focus on all areas of the watersheds and shoreline**

What this new approach means for Colma Creek

- Moving forward: improvements/repairs to discharge pipes Hwy. 101 to Utah Ave.
- Modify a floodwall project downstream of Utah Ave.

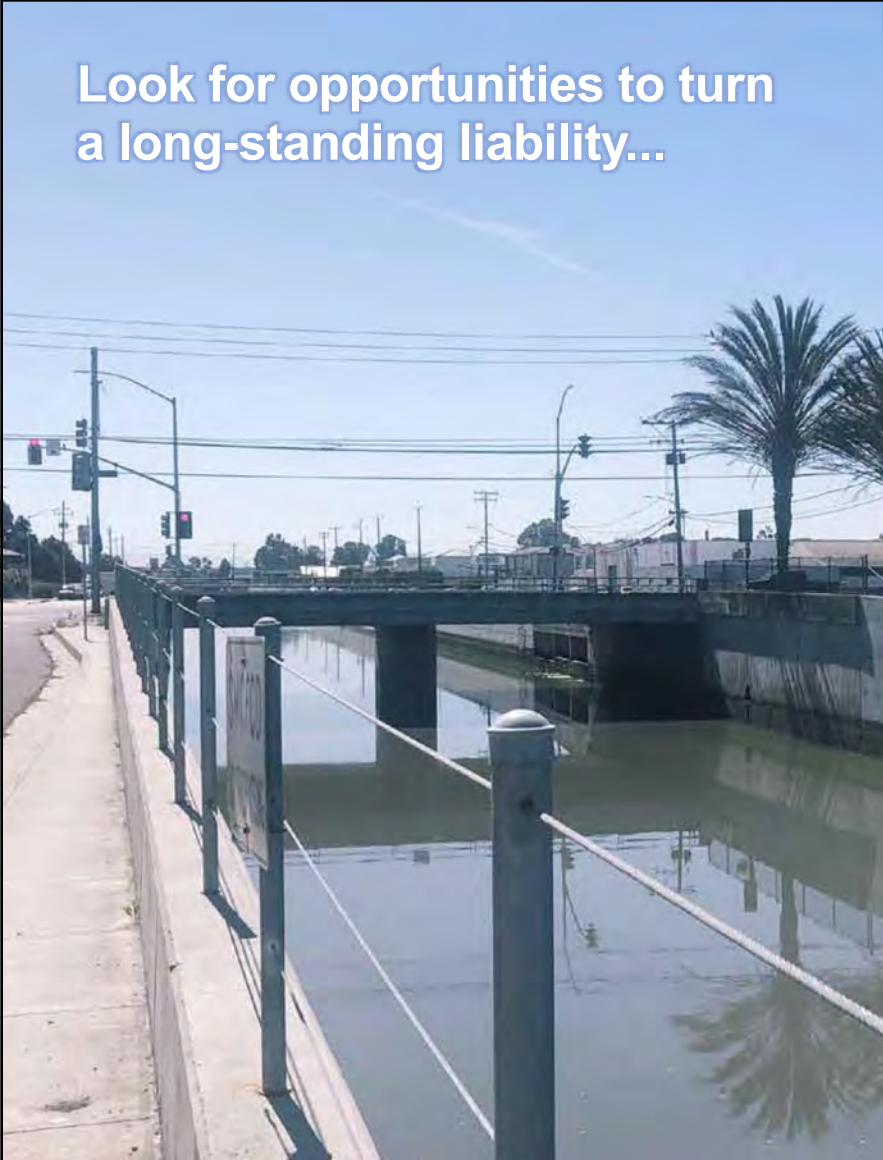




- Bay Trail**
- Paved
 - - - Dirt/Gravel
 - On Street
 - Planned
- Other Trail**
- Existing
 - - - Planned

Maintain opportunities for bike and pedestrian trail access to upstream areas

Look for opportunities to turn
a long-standing liability...



...into a community asset.



What this new approach means for Colma Creek

Look for opportunities to work with private and public landowners to achieve mutual objectives, replace grey infrastructure with green infrastructure, and incorporate recreation and connectivity

