

Please add any questions you have into the chat, or email to Projects@OneShoreline.org

Responses to questions not answered will be posted to OneShoreline.org by 5:00 PM, February 24

February 17,
2021

Agenda

- Introduction
- Project site
- Project elements
- Permit conditions
- Q&A

Bayfront Canal-Atherton Channel

Flooding and project history

- 40 significant flood events (1951-2017)
- Project planning began in 2012

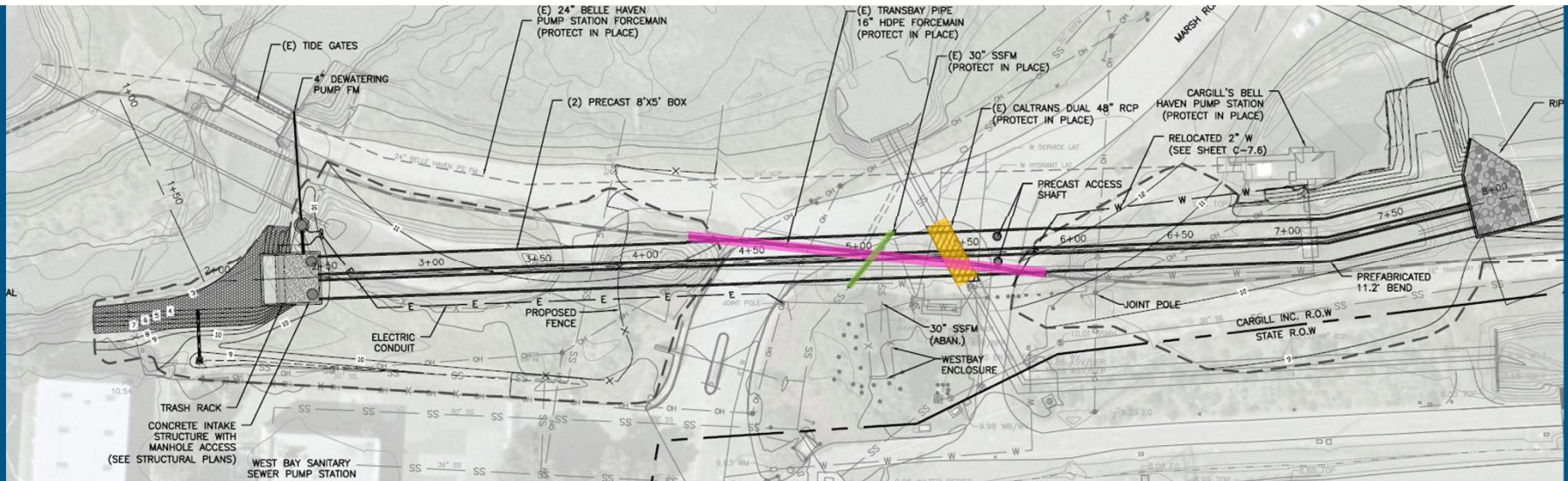
Consequences

- Public health and safety
- Street closures
- Property damage
- Economic impacts to jurisdictions
- Regional emergency response required and hindered

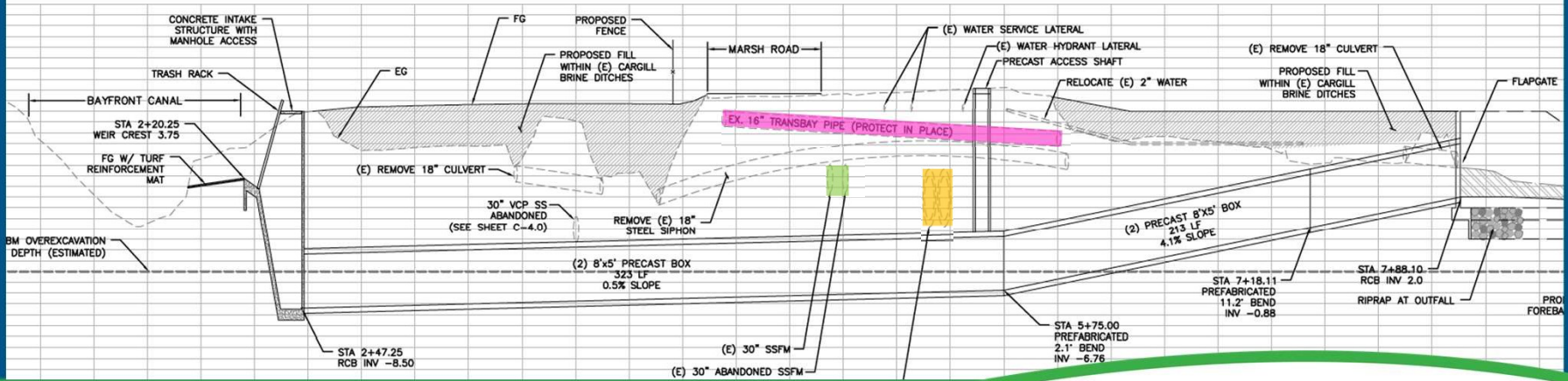


Bayfront Canal & Atherton Channel Project





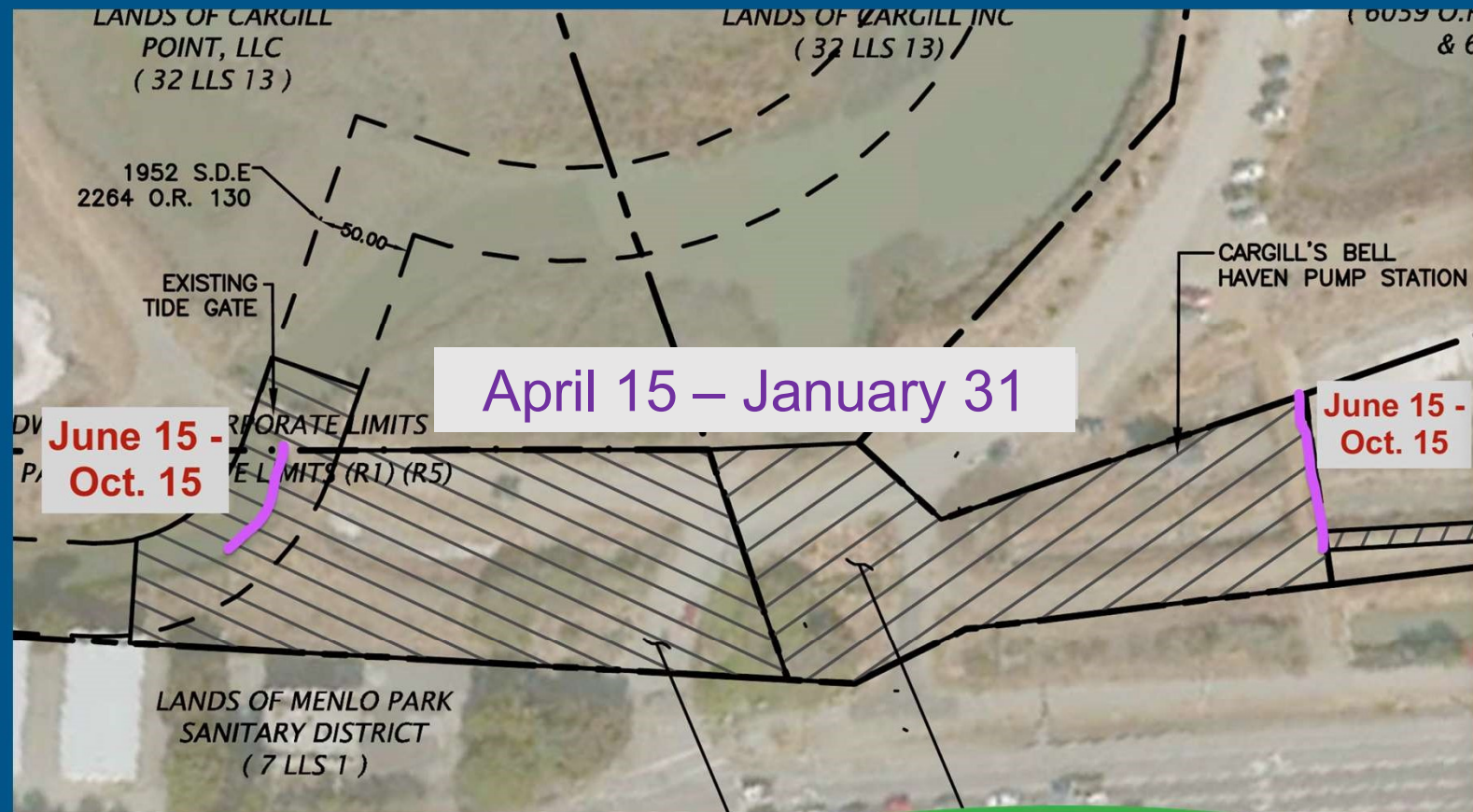
PLAN
 SCALE: 1"=30'



Permit Conditions

Permitting Agencies

- CDFW
- USACE
- NMFS
- USFWS
- RWQCB
- BCDC



Questions