

March 9, 2021

**Colma Creek
Citizen's Advisory Committee**

**San Mateo County
Flood & Sea Level Rise
Resiliency District**

AGENDA

- I. Roll Call**
- II. Approve minutes of December 8, 2020 meeting**
- III. Public Comment**
- IV. Update on Colma Creek Flood Zone Projects and Maintenance Activities**
 - a. Project Summaries, Locations, and Budgets**
 - b. Project Update: City of South San Francisco Orange Memorial Park Stormwater Capture Project**
 - c. Maintenance Agreements Update**
- V. Update to the 2019 Colma Creek Hydrology & Hydraulic Modeling Analysis Report**
- VI. Adjournment**

Meeting Objectives

- Present and answer questions on projects and maintenance activities in the Colma Creek Flood Zone**
- Discuss update to 2019 Colma Creek Modeling Report**

District Projects

Project 3. El Camino Culvert and Mission Rd Diversion

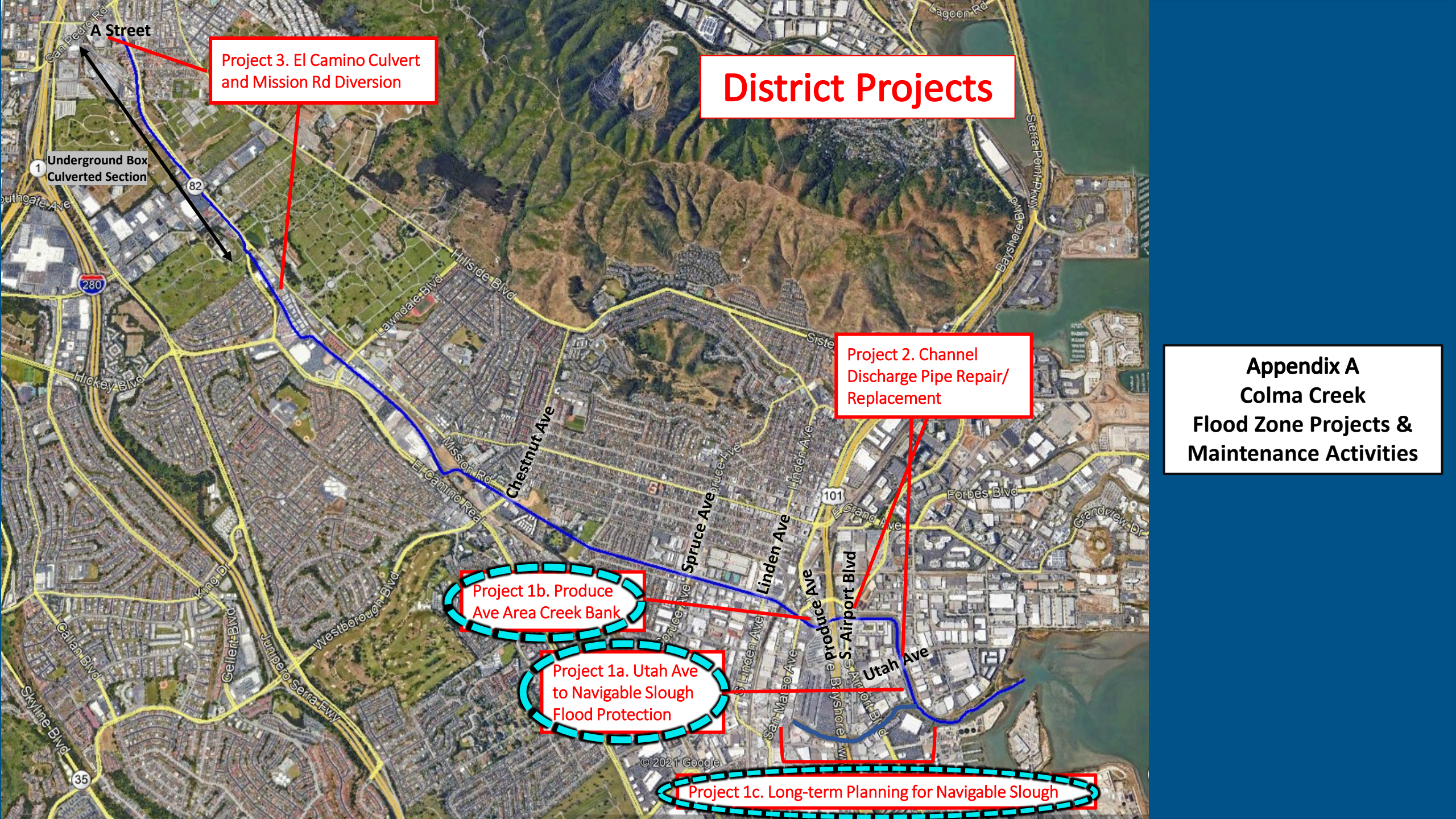
Project 2. Channel Discharge Pipe Repair/Replacement

Project 1b. Produce Ave Area Creek Bank

Project 1a. Utah Ave to Navigable Slough Flood Protection

Project 1c. Long-term Planning for Navigable Slough

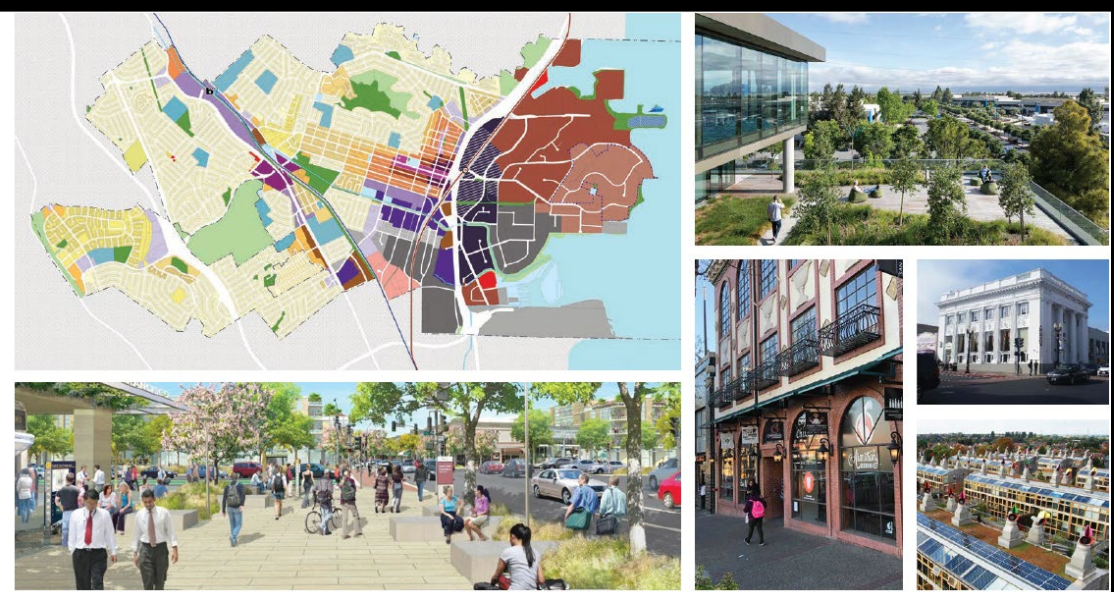
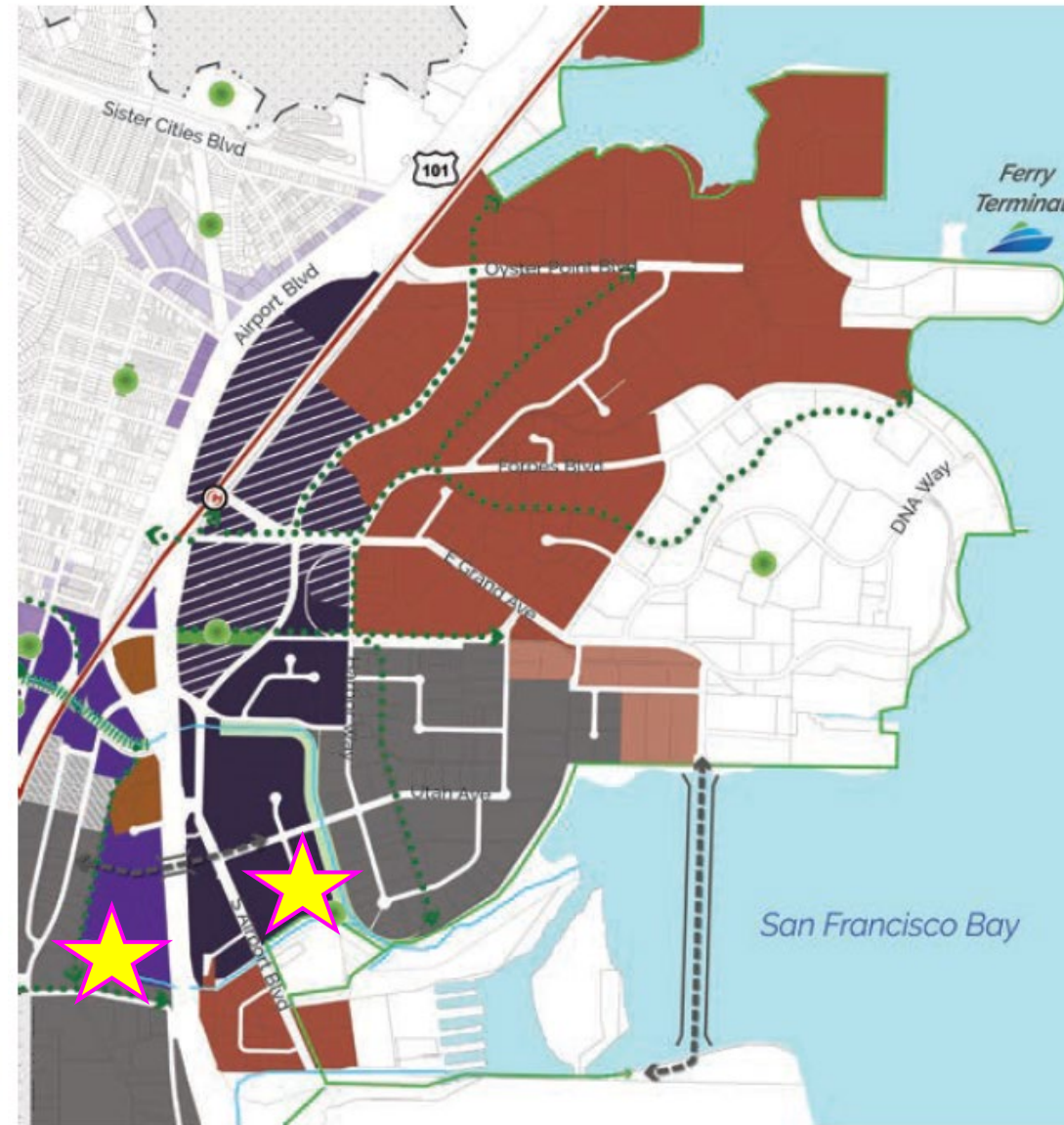
Appendix A
Colma Creek
Flood Zone Projects &
Maintenance Activities



West of 101

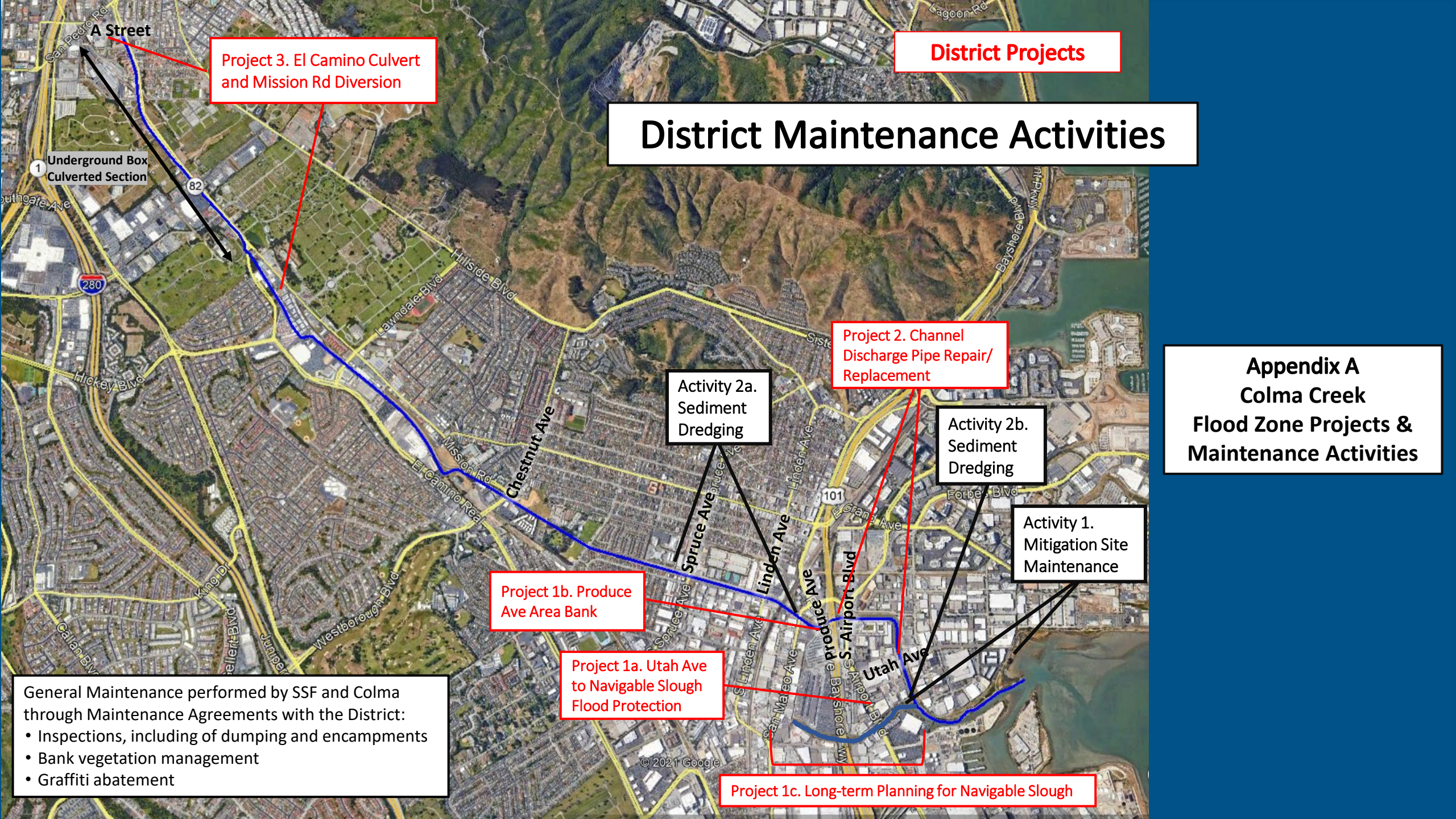


East of 101




SHAPE SSF
2040 GENERAL PLAN
Preferred Alternative
October 2020

Proposed Bridge or Elevated Roadway
 Bay Trail
 Potential Canal Improvements
 Potential Streets
 Proposed Bridge or Elevated



District Projects

District Maintenance Activities

Project 3. El Camino Culvert and Mission Rd Diversion

Project 2. Channel Discharge Pipe Repair/Replacement

**Appendix A
Colma Creek
Flood Zone Projects &
Maintenance Activities**

**Activity 2a.
Sediment
Dredging**

**Activity 2b.
Sediment
Dredging**

**Activity 1.
Mitigation Site
Maintenance**

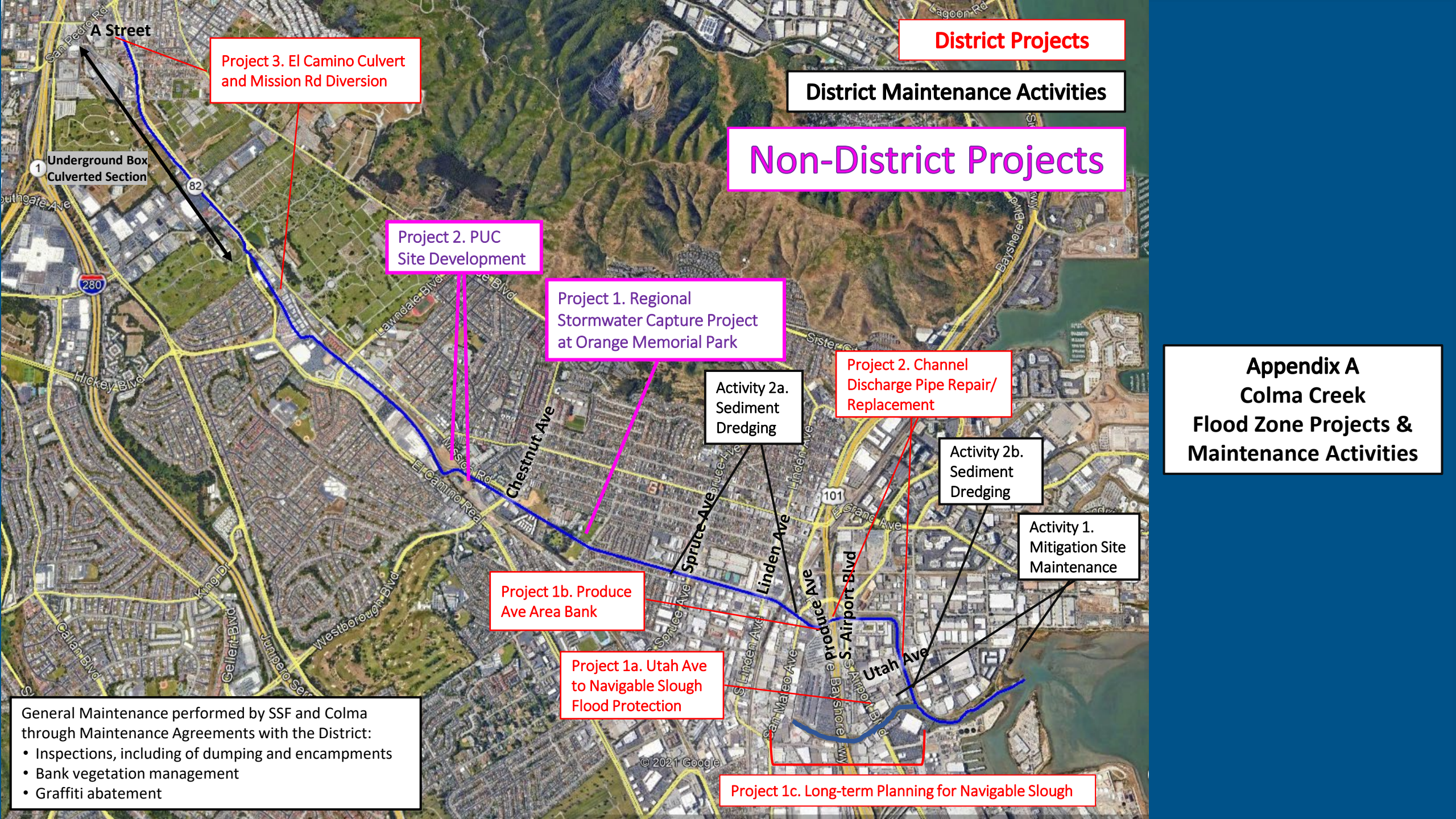
**Project 1b. Produce
Ave Area Bank**

**Project 1a. Utah Ave
to Navigable Slough
Flood Protection**

Project 1c. Long-term Planning for Navigable Slough

General Maintenance performed by SSF and Colma through Maintenance Agreements with the District:

- Inspections, including of dumping and encampments
- Bank vegetation management
- Graffiti abatement



Project 3. El Camino Culvert and Mission Rd Diversion

District Maintenance Activities

Non-District Projects

Project 2. PUC Site Development

Project 1. Regional Stormwater Capture Project at Orange Memorial Park

Project 2. Channel Discharge Pipe Repair/Replacement

Activity 2a. Sediment Dredging

Activity 2b. Sediment Dredging

Activity 1. Mitigation Site Maintenance

Project 1b. Produce Ave Area Bank

Project 1a. Utah Ave to Navigable Slough Flood Protection

Project 1c. Long-term Planning for Navigable Slough

**Appendix A
Colma Creek
Flood Zone Projects &
Maintenance Activities**

General Maintenance performed by SSF and Colma through Maintenance Agreements with the District:

- Inspections, including of dumping and encampments
- Bank vegetation management
- Graffiti abatement

Orange Memorial Park Regional Stormwater Capture Project



Colma Creek Hydrology and Hydraulic Modeling Analysis

DECEMBER 6, 2019

PREPARED FOR
COUNTY OF SAN MATEO
DEPARTMENT OF PUBLIC WORKS



FLOOD AND SEA LEVEL RISE
RESILIENCY DISTRICT

PREPARED BY
PARADIGM ENVIRONMENTAL



NORTHWEST HYDRAULIC CONSULTANTS
nhc
northwest hydraulic consultants



Colma Creek and Navigable Slough Hydrologic and Hydraulic Modeling Project

December 10, 2019



Update to 2019 Colma Creek Modeling Report

Table C-4. 1D HEC-RAS model results for future climate 100-year event. – Continued.

HEC-RAS station (ft)	Structure	Max WSE ¹ (ft NAVD88)	Max depth (ft)	Channel velocity (ft/s)	Bank top or structure soffit elevation ² (ft NAVD88)		Freeboard to top of bank or structure soffit ³ (ft)	
					Left	Right	Left	Right
10623	Dissipator teeth	16.8	12.1	11.1	14.4	14.4	-2.5	-2.5
10573		17.4	12.8	7.3	18.3	18.3	0.9	0.9
10368		17.4	12.9	6.9	20.2	20.2	2.8	2.8
10323		17.1	12.7	7.4	20.7	20.7	3.6	3.6
10308	Spruce Ave Bridge							
10224		17.4	15.1	6.1	17.0	17.0	-0.4	-0.4
10186		17.4	15.1	6.0	17.0	17.0	-0.4	-0.4
10123		17.1	14.9	6.7	17.0	17.0	-0.1	-0.1
8623		16.6	14.8	6.5	16.5	16.5	-0.1	-0.1

Four scenarios: Current 50-year, Current 100-year, Current 100-year with 3' SLR, Future 100-year

Contact Makena Wong (mwong@onshoreline.org) for more information

Next Advisory Committee Meeting

June 8, 2021 at 3:00 pm

