

2021 CLIMATE CHANGE RISK & RESILIENCE FORUMS

April 8	San Mateo, Foster City, Redwood Shores, Belmont, San Carlos
April 29	Redwood City, Menlo Park, East Palo Alto
June 3	Countywide Wildfire Risk and Resilience
September 2	Brisbane, South San Francisco, San Bruno, Millbrae, Burlingame
October 14	San Mateo County Pacific Coastline

Forums are held on Thursdays, 7:00 PM to 8:30 PM

April 29, 2021

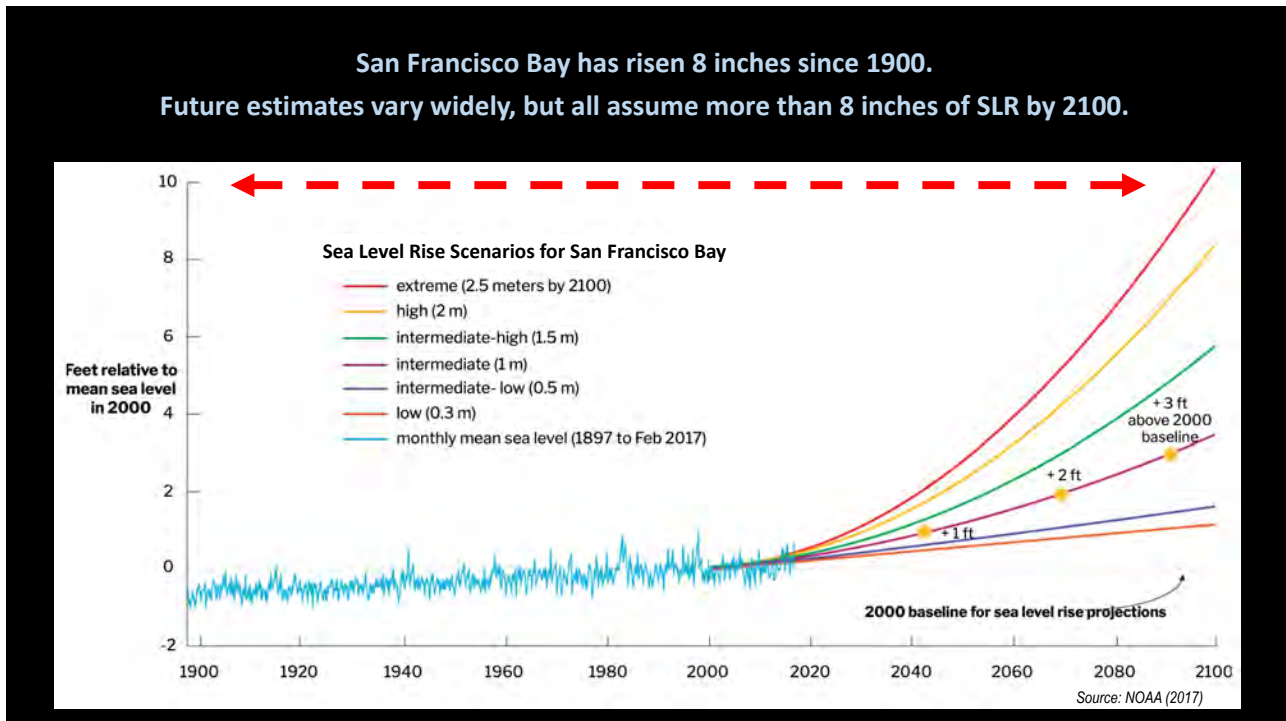
*Climate Change Risk and Resilience Forum:
Redwood City (south of Whipple), Menlo Park, East Palo Alto*

San Mateo County Flood and Sea Level Rise Resiliency District
Len Materman, CEO

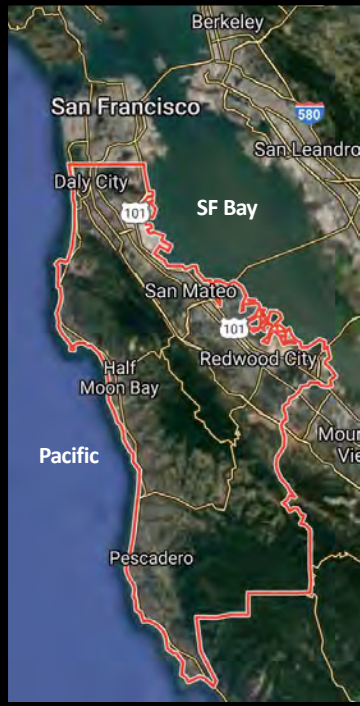
A partnership between League of Women Voters chapters throughout San Mateo County & the San Mateo County Flood and Sea Level Rise Resiliency District (OneShoreline)

Logos: OneShoreline, LWV LEAGUE OF WOMEN VOTERS

1



2



San Mateo County: A Poster Child of Sea Level Rise Vulnerability

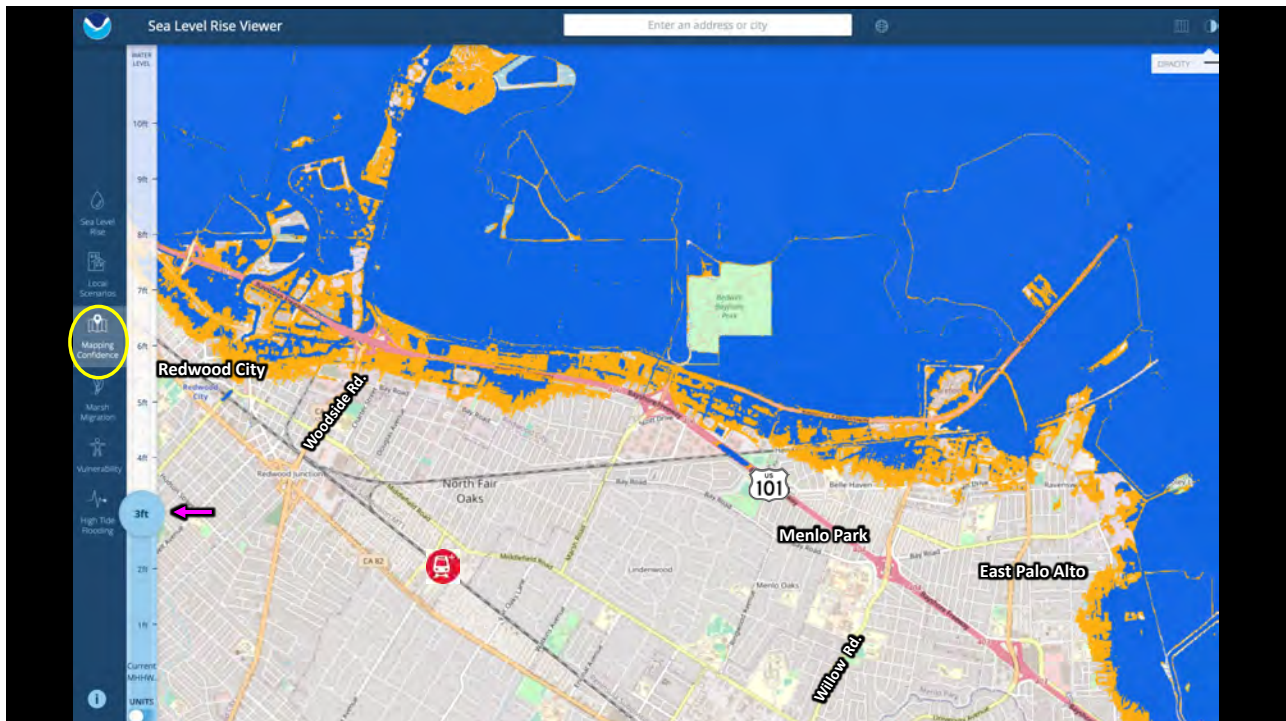
Most vulnerable CA county to 3 feet of sea level rise in terms of:

- population, including underrepresented population
- property value
- number of homes
- number of contaminated sites

One of 6 counties in U.S. and only one on West Coast with over 100,000 people living in an area impacted by 3 feet of sea level rise.

Key community assets in the county vulnerable to sea level rise: schools, hospitals, beaches, highways, water treatment plants, power plants, wetlands, and major corporations.

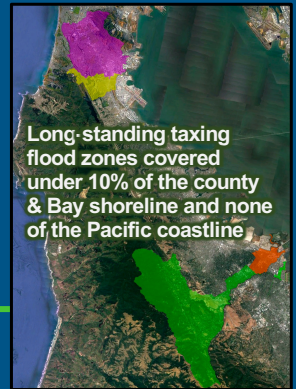
3



4

With the need established, and knowing cities can't lead multi-jurisdictional efforts requiring substantial permits, land rights, and state, federal, and private funding, what did it take to establish a countywide climate resiliency district on January 1, 2020?

- Determined, effective champions from the state and federal governments, and committed local elected officials from jurisdictions to lead the district
- A compelling argument for how a new district would add value



Value is added by taking a holistic approach to the:

- GEOGRAPHY – projects align and connect protection for neighboring jurisdictions
- THREAT – storms made more extreme by climate change & sea level 10 feet above today's high tide
- OBJECTIVES – reduce these threats; turn waterways & shorelines from liabilities into assets that are integrated into communities; utilize green infrastructure and public & private lands

OneShoreline
Building Solutions for a Changing Climate

5

Summary of 2021-22 project activities with the District as the

- Project Lead
- Project Partner
- Potential Project Partner

OneShoreline Projects:

- “Go Big” – meaningful, long-term protection for multiple jurisdictions
- Achievable – technically, and in terms of money, land, permits, and local support
- Clear role for OneShoreline that adds value

With SFCJPA: San Francisquito Creek, SAFER Bay shoreline project

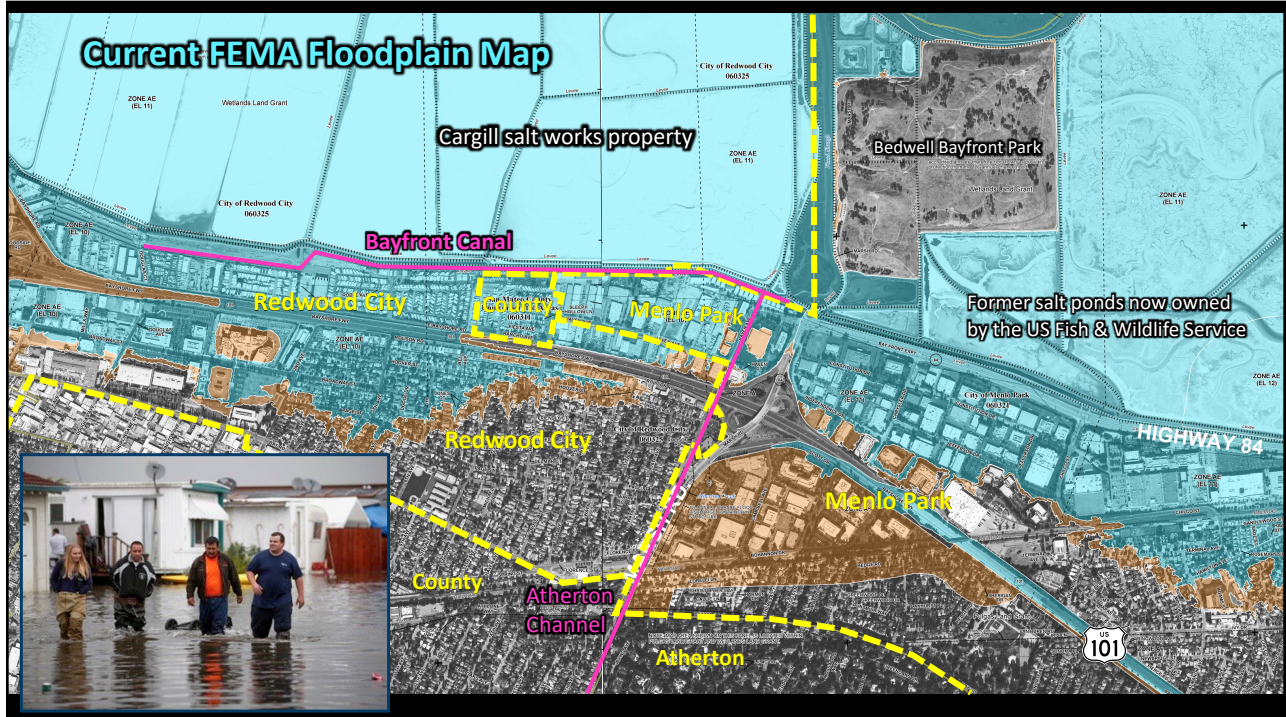
6



7



8



9

Bayfront Canal-Atherton Channel

Flooding and project history

- 40 significant flood events (1951-2017)
- Project planning began in 2012

Consequences

- Public health and safety
- Street closures
- Property damage
- Economic impacts to jurisdictions
- Regional emergency response required and hindered

10

Looking Northwest...

From Marsh Road towards Seaport Boulevard



At Bayfront Canal & Flood Slough



11

OneShoreline's first construction contract awarded this week

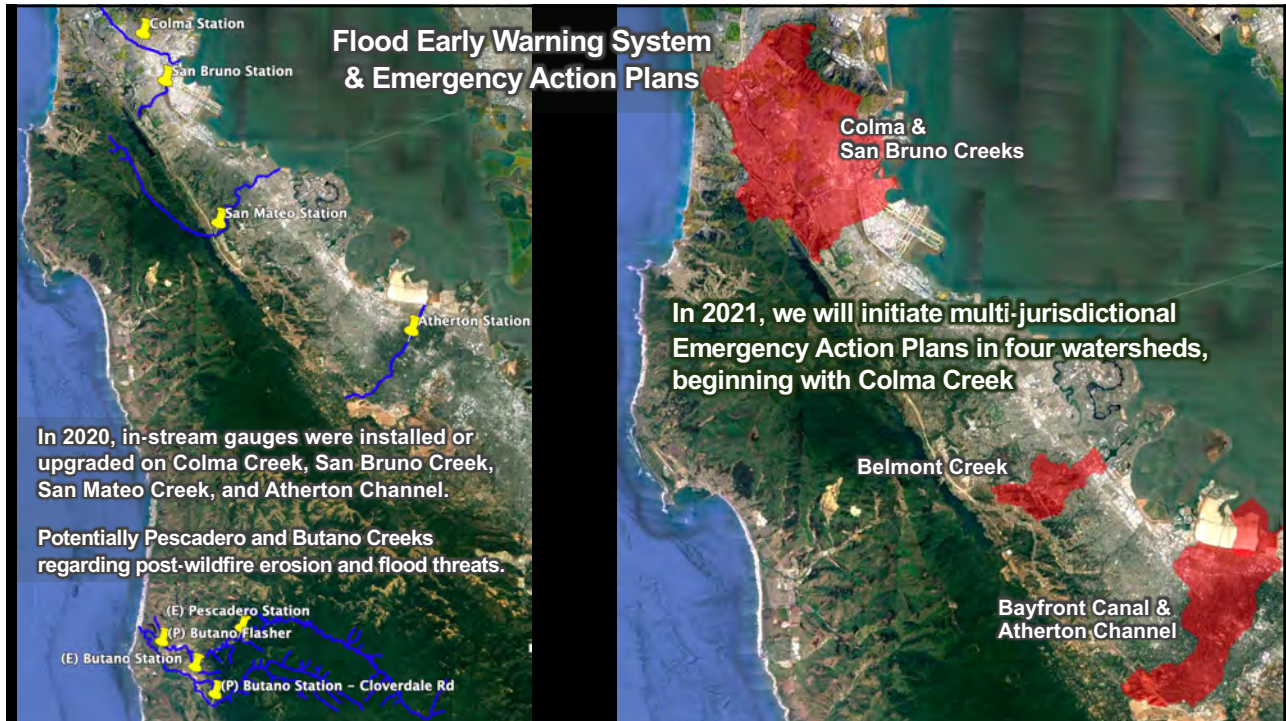
Bayfront Canal and Atherton Channel Flood Protection and Ecosystem Restoration Project

- Land Easements among OneShoreline, 2 cities, County, Cargill
- Permits: USACE, USFWS, NMFS, CDFW, RWQCB, BCDC
- Funding from 3 cities, County, and State

Construction mid-May – January 2022



12



13

Contact us at:
Info@OneShoreline.org

Thank you



14

A wide-angle landscape photograph showing a river winding through a lush green valley. The sky is filled with large, white and grey clouds, suggesting a bright but slightly overcast day. The foreground shows some dry grasses and a small island of reeds in the water.

CITY OF MENLO PARK CLIMATE CHANGE RISK & RESILIENCE

Chris Lamm, Assistant Public Works Director

A close-up photograph of a riverbank. The foreground is dominated by green grass and small purple flowers. The river water is visible on the right side of the frame.

CITY OF MENLO PARK - CLIMATE CHANGE, RISK AND RESILIENCE



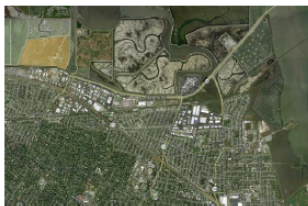
- About Menlo Park
 - Home to approximately 36,000 residents
 - \$126M Operating Budget
 - \$21M Capital Improvement Budget
 - Roughly 19 square miles
 - 7.4 square miles located in the Bay

- Planning efforts to date
 - SAFER Bay (2016)
 - Dumbarton Bridge – West Approach + Adjacent Communities Resilience Study Technical Report (2020)

- FEMA Building Resilient Infrastructure and Communities (BRIC) grant Project

- City of Menlo Park 2030 Climate Action Plan

PLANNING EFFORTS TO DATE



Public Draft Feasibility Report

SAFER Bay Project

Strategy to Advance
Flood protection, Ecosystems and
Recreation along San Francisco Bay

East Palo Alto and Menlo Park
(Task Order 1)

October 2016



SFCJPA.ORG

San Francisquito Creek
Joint Powers Authority

615 B Menlo Avenue
Menlo Park, CA 94025



**DUMBARTON BRIDGE
WEST APPROACH +
ADJACENT COMMUNITIES
RESILIENCE STUDY
TECHNICAL REPORT
JUNE 2020**



SAFER BAY – ALIGNMENT ALTERNATIVES



Project Objectives

- Protect against 100-year flood and would remove properties from FEMA floodplain associated with tidal flooding
- Provide additional resilience against future sea level rise
- Sustains marsh habitat and facilitate marsh restoration
- Create opportunities for partnership with agencies and organizations pursuing similar goals and objectives



FEMA BUILDING RESILIENT INFRASTRUCTURE AND COMMUNITIES (BRIC) GRANT

- Project is a collaboration between Menlo Park, PG&E, San Francisquito Creek Joint Powers Authority (SFCJPA), and Facebook
- Allows for the design and construction of portions or all of reaches 2, 3, 4, and 5 identified in the SAFER Bay Feasibility Report
- Provides levee improvements along the majority of the Menlo Park shoreline providing coastal flood protection and sea level rise resiliency to residential neighborhoods, business, and critical electrical infrastructure
- Using nature-based solutions, the levee will allow for habitat restoration of over 550 acres of former salt ponds, and will increase public recreational access.
- Estimated total project cost is \$66M
 - Up to \$50M in FEMA BRIC Grant
- If awarded, the estimated project duration is 5 years including design and construction (Completion in 2026)

Partners



FACEBOOK







2030 CLIMATE ACTION PLAN



- Explore policy/program options to convert 95% of existing buildings to all electric by 2030
- Set citywide goal for increasing EVs and decreasing gasoline sales
- Expand access to EV charging for multifamily and commercial properties
- Reduce vehicle miles traveled (VMT) by 25% or an amount recommended by the Complete Streets Commission
- Eliminate the use of fossil fuels from municipal operations
- Develop a climate adaptation plan to protect the community from sea level rise and flooding

2030 CLIMATE ACTION PLAN

Prepared by the Environmental Quality Commission
Adopted by City Council July 2020 (Resolution No.6575)
Amended April 20, 2021 (Resolution No. 6621)



A 2030 PLAN TO ELIMINATE CARBON EMISSIONS & PROTECT
OUR COMMUNITY FROM CLIMATE CHANGE

JUNE 2020

www.menlopark.org/305/Climate-Action-Plan

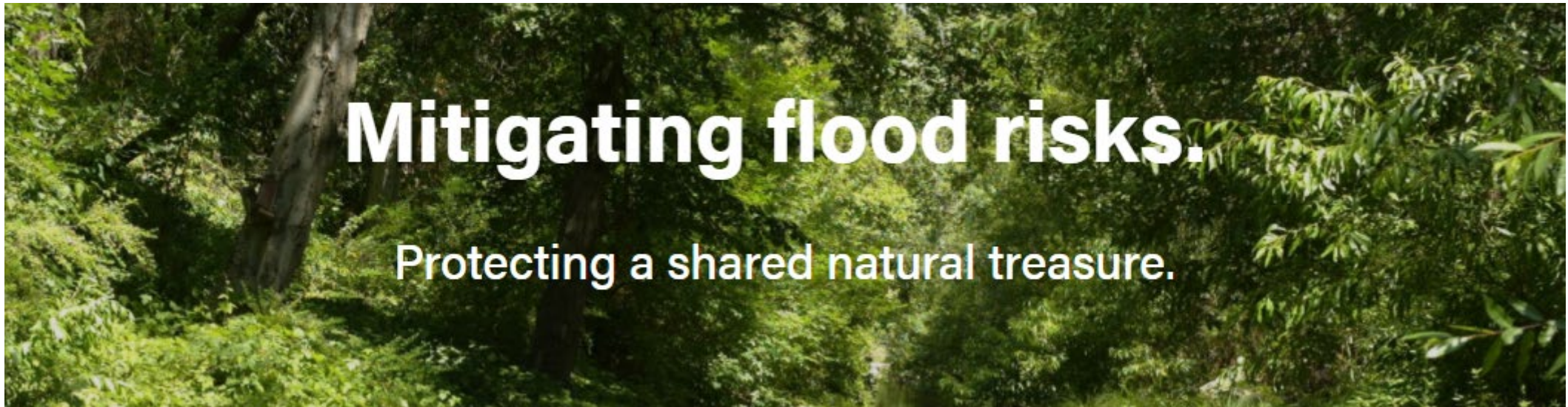


THANK YOU



SFCJPA.ORG

Margaret Bruce
Executive Director
San Francisquito Creek Joint Powers Authority

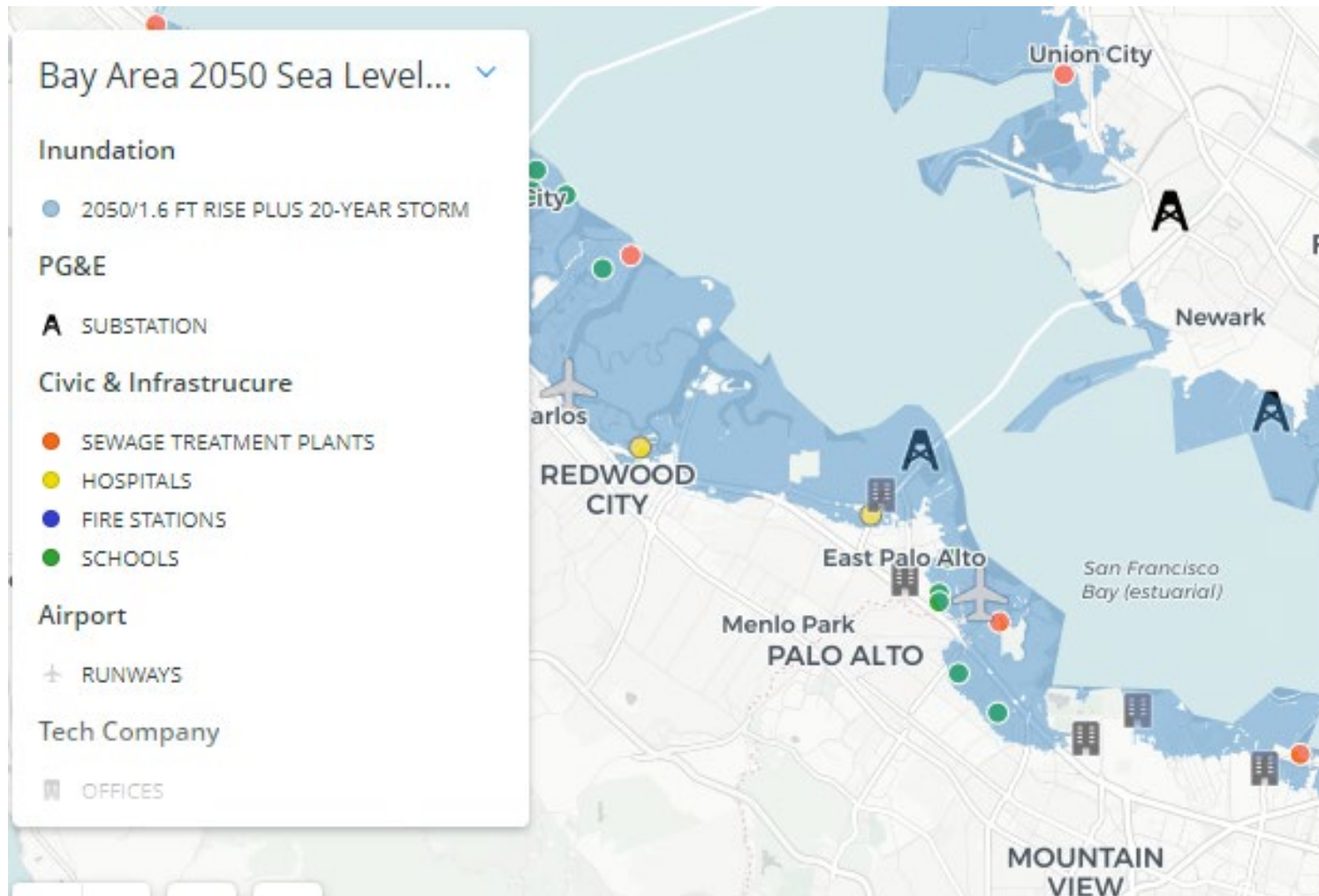


Mitigating flood risks.

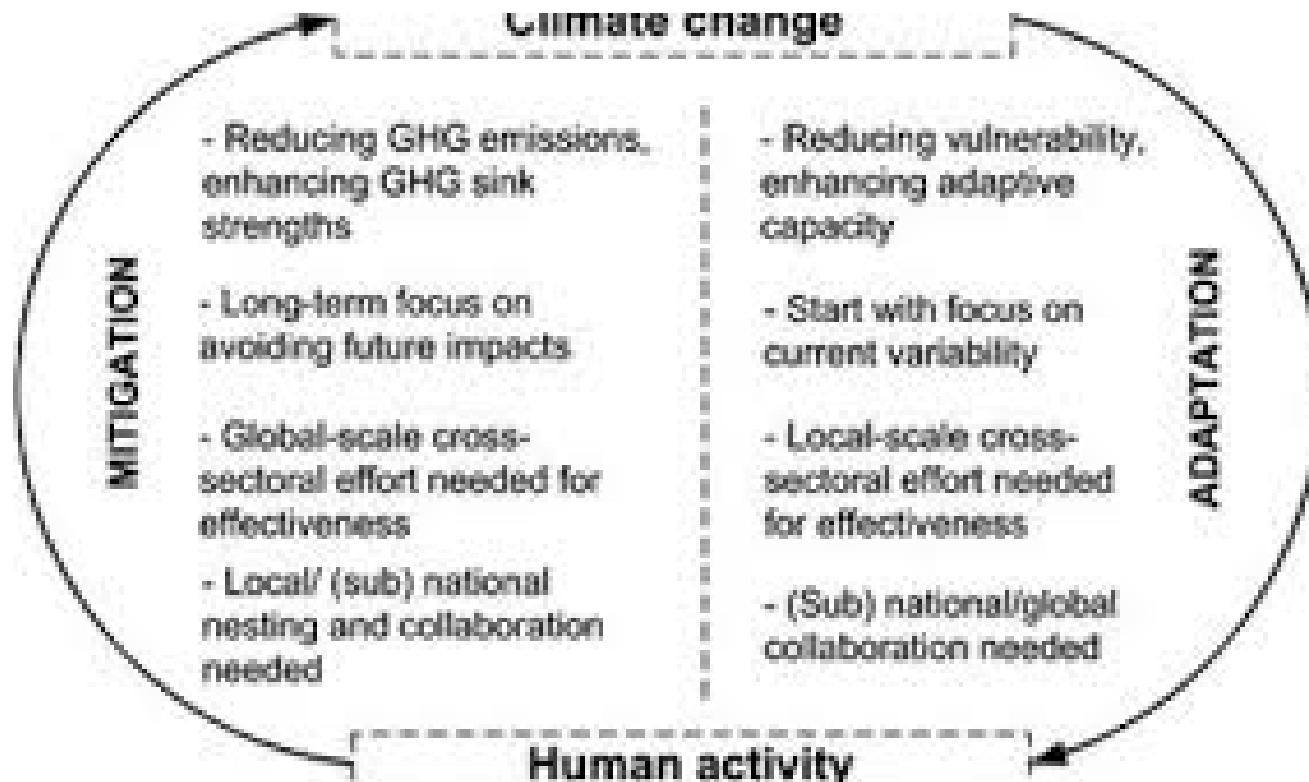
Protecting a shared natural treasure.

What is the issue?

Sea level rise is putting people, infrastructure and ecosystems in harm's way

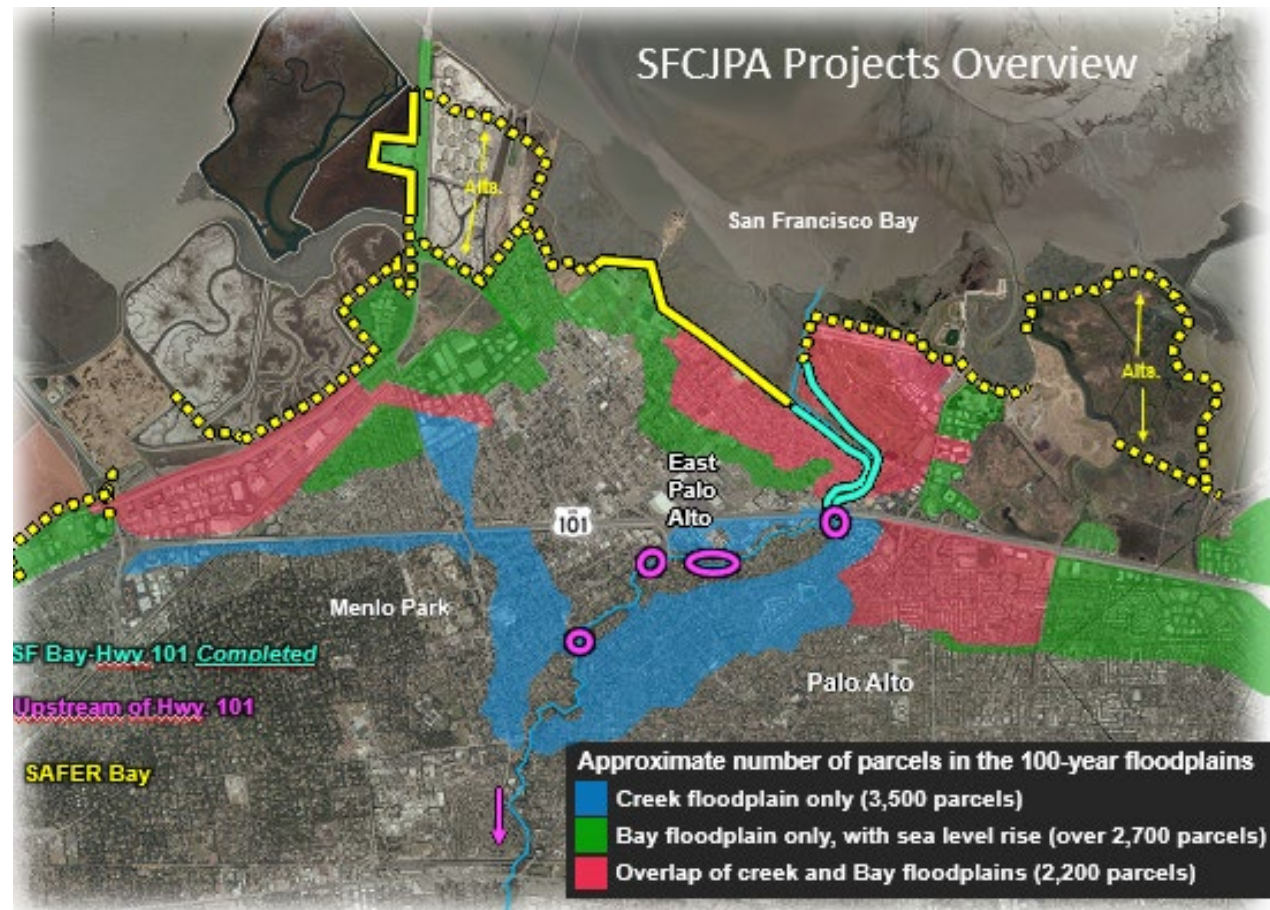


How can we reduce the risks and impacts?



- We will need rapid, massive, structural, economy-wide changes in energy and food production, transportation, and the built environment to MITIGATE the harshest irreversible impacts.
- Because climate-changing emissions have a long latency in the atmosphere, we have already incurred a significant amount of warming. We will have to ADAPT to changes this warming brings.

What is the SFCJPA doing about the risks of flooding from sea level rise?



SAFER Bay Project:

- 9 “Reaches” or segments of work across EPA and MP – Levee protection connecting to other projects to the north and south
- Creates more Bayshore recreation access
- Restores former salt ponds R1 and R2



SFCJPA.ORG

For more information....

About the SFCJPA and our projects, please visit:

WWW.SFCJPA.ORG



Mitigating flood risks.

Protecting a shared natural treasure.