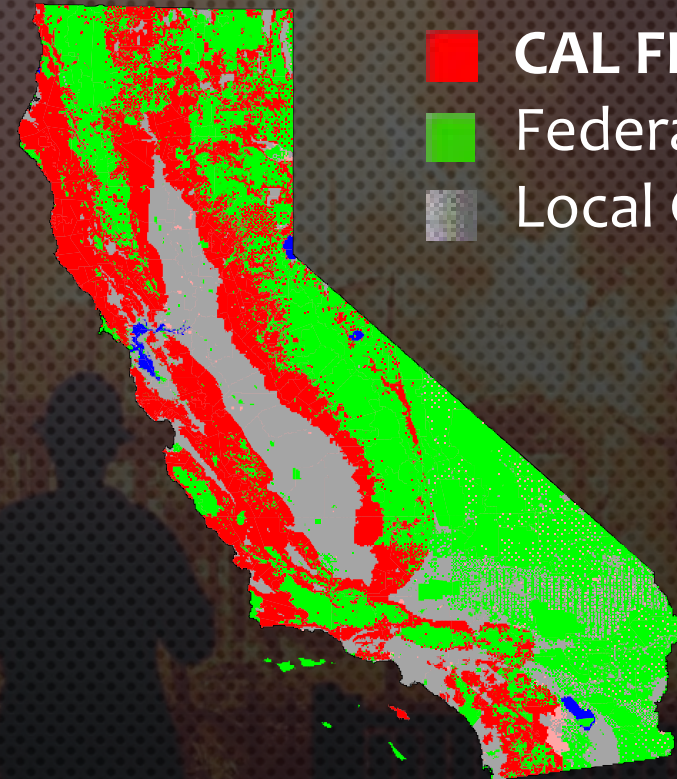




THE NEW WILDFIRE REALITY

PRESENTED BY: DEPUTY CHIEF JONATHAN COX

ABOUT CAL FIRE



-  CAL FIRE
-  Federal
-  Local Gov't



ABOUT CAL FIRE

CAL FIRE's Mission:

To keep 95% of all wildfires contained at
10 acres or less



ABOUT CAL FIRE

HOW WE ARE STRUCTURED

- A PART OF THE RESOURCES AGENCY
- WORK FOR THE BOARD OF FORESTRY
- \$2 BILLION + BUDGET
- FIRE PROTECTION OPERATIONS
- CALIFORNIA OFFICE OF THE FIRE MARSHAL
- RESOURCE MANAGEMENT
- PROTECT THE PRIVATE LANDS IN CALIFORNIA



ABOUT CAL FIRE

AIR OPERATIONS PROGRAM

- LARGEST WILDLAND FIREFIGHTING AIR FORCE IN THE WORLD
- 13 AIR BASES (23 AIR TANKERS AND 15 AIR ATTACKS)
- 10 HELIBASES (12 HELICOPTERS)
- CONTRACTS FOR LARGER AIR TANKERS



ABOUT CAL FIRE



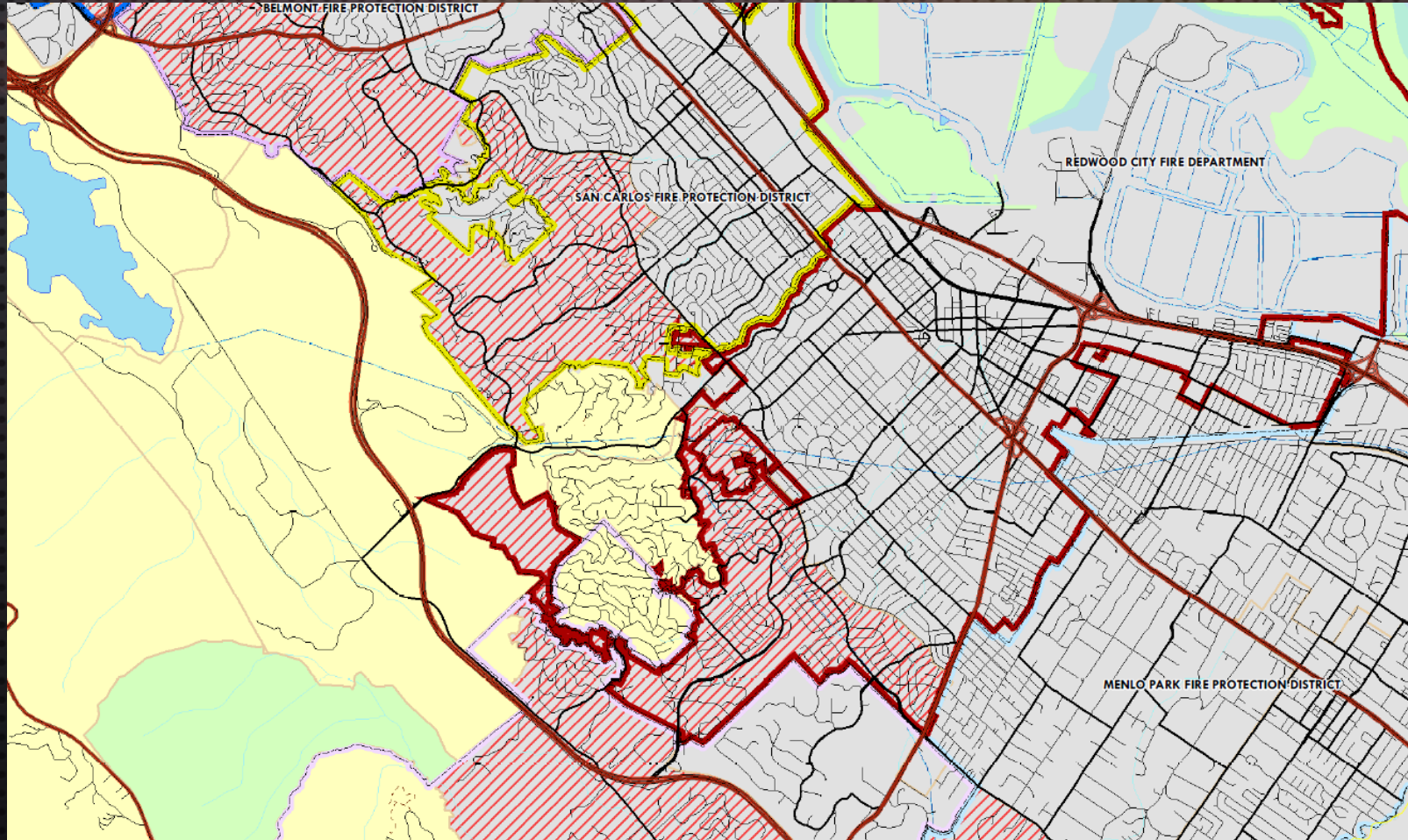
LOCALLY

- 4 STATE WILDLAND FIRE ENGINES & 1 DOZER (SRA)
- COOPERATIVE CONTRACT WITH SAN MATEO COUNTY FD AND COASTSIDE FD TO PROVIDE STAFFING (ALL RISK) ~70%
- RESOURCE MANAGEMENT AND VEGETATION MANAGEMENT
- PARTICIPATE WITH FIRE SAFE COUNCIL ON FACILITATING / FUNDING GRANTS



THE THREAT TO SAN MATEO COUNTY

HOW WE RESPOND TOGETHER



CALIFORNIA WILDFIRES

2020 STATISTICS



8,716

FIRES



4.12 MILLION

ACRES
BURNED



9,282

STRUCTURES
DESTROYED



CALIFORNIA WILDFIRES

2020 STATISTICS

- 31 FATALITIES THIS YEAR
- OVER 17,000 FIREFIGHTERS DEPLOYED
- OVER 100 AIRCRAFT DEPLOYED



HOW BAD ARE THINGS?

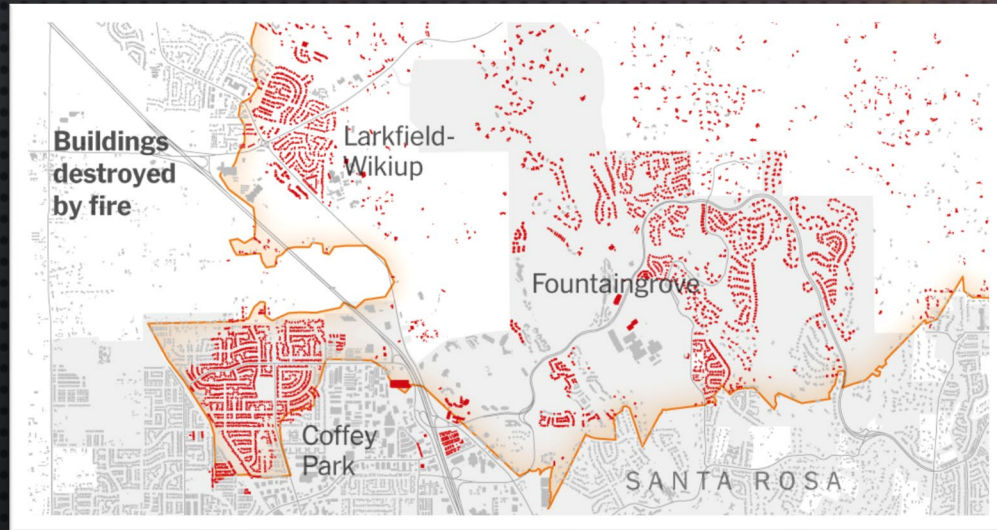
15 of 20 top most destructive fires in CA have been since 2015

6 of the 20 largest fires in CA occurred in 2020

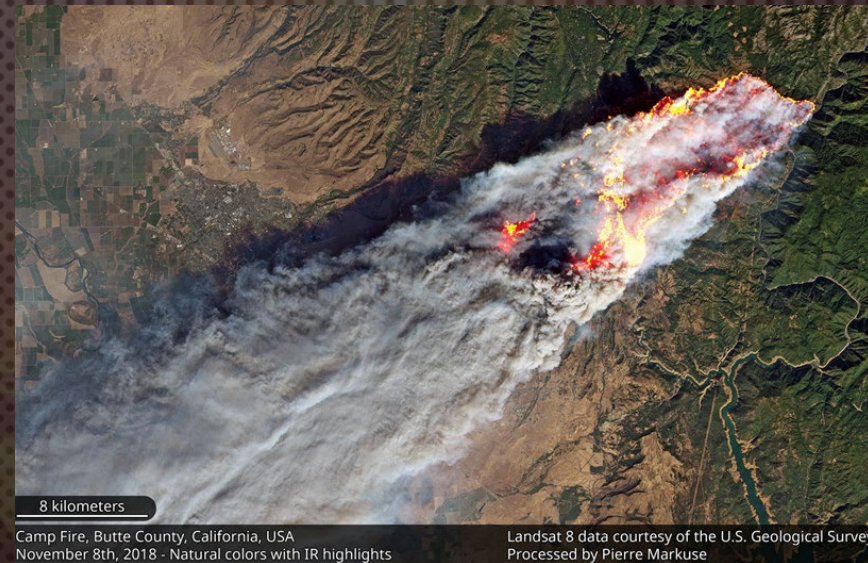


THE NEW WILDFIRE REALITY

RATES OF SPREAD



TUBBS FIRE
2017



CAMP FIRE
2018



THE NEW WILDFIRE REALITY

AN EQUATION

CLIMATE CHANGE

- WEATHER/FIRE BEHAVIOR
- VEGETATION
- LENGTH OF FIRE SEASON



HUMAN IMPACT

- FIRE SUPPRESSION
- POPULATION GROWTH
- INFRASTRUCTURE



THE NEW REALITY

- MORE FIRES
- MORE DESTRUCTION
- MORE FREQUENTLY



THE NEW WILDFIRE REALITY

WHAT THIS MEANS IN REALITY

- FIREFIGHTING **NOT** EFFECTIVE IN THE INITIAL ATTACK
- MULTI-AGENCY COORDINATION AND COMMAND IS **REQUIRED**
- INCIDENT MANAGEMENT TEAMS DEPLOYED **MORE OFTEN** & SIMULTANEOUSLY
- WILDFIRES ARE MASS **RESCUE/CASUALTY** INCIDENTS
- EVACUATION ORDERS REQUIRED EARLIER OVER **LARGER** AREAS
- **LARGER** RESOURCE ORDERS, LONGER DEPLOYMENTS
- **LONGER** BURN PERIODS AND **PROLONGED** FIRE BEHAVIOR
- TRAFFIC CONGESTION COORDINATION NOW **NECESSARY**
- VULNERABLE POPULATIONS ARE **MOST** AT RISK



THE NEW WILDFIRE REALITY

WHAT ARE WE DOING?

CALIFORNIA'S WILDFIRE AND FORESTRY RESILIENCE ACTION PLAN

SONOMA COUNTY
FIRE HAZARD SEVERITY ZONES IN SRA
Adopted by CAL FIRE on November 7, 2007

South & East Bay CA

ALERT wildfire

South & East Bay Cameras (report fire start)

IMAGE PG&E

California Climate Investment

SF PUC VMP Project
1:100,000

Project Area Map

1561877

CALIFORNIA DEPARTMENT OF FORESTRY & FIRE PROTECTION
CAL FIRE
SINCE 1885

THE NEW WILDFIRE REALITY

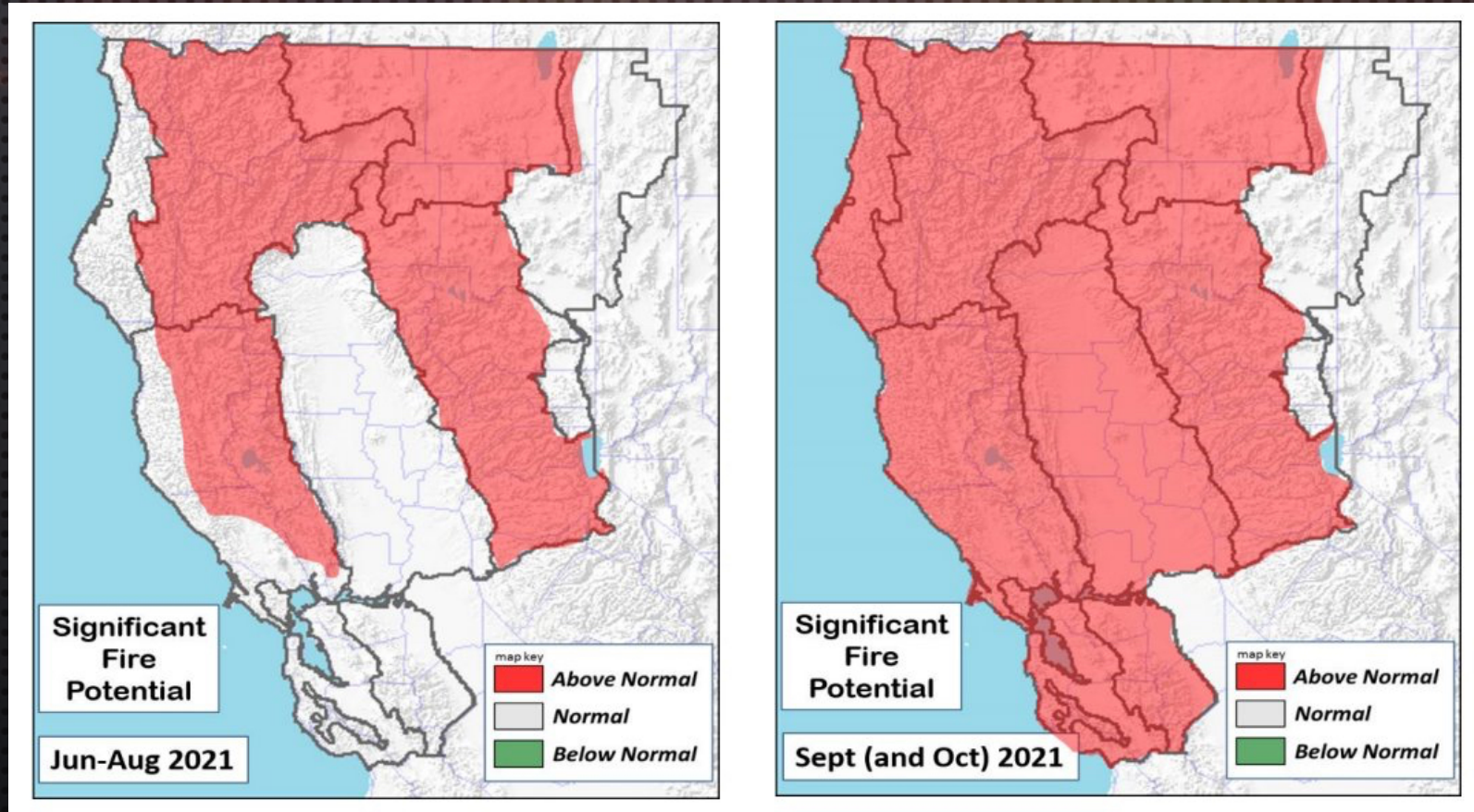
WHAT ARE WE DOING?

- **RESPONSE:** ADDITIONAL RESOURCES, BOLSTERING MUTUAL AID
- **MITIGATION:** VEGETATION MANAGEMENT PROJECTS
- **ENFORCEMENT:** INDIVIDUAL DEFENSIBLE SPACE INSPECTIONS
- **PREPAREDNESS:** FUNDING LOCAL ORGANIZATIONS WITH GRANTS
- **PLANNING:** PRE-FIRE EVACUATION PLANNING & HAZARD MAPPING
- **POLICY:** WUI BUILDING CODE AND LOCAL BUILDING PLANNING REVIEW
- **PREVENTION:** ADAPTING TO PUBLIC SAFETY POWER SHUTOFFS / PLANS
- **EDUCATION:** COMMUNICATING DIRECTLY WITH PUBLIC
- **RESEARCH:** COLLECTING PRE & POST FIRE DATA



THE NEW WILDFIRE REALITY

WHAT IS THIS YEARS OUTLOOK?



THANK YOU!

LET'S STAY IN TOUCH

JONATHAN COX

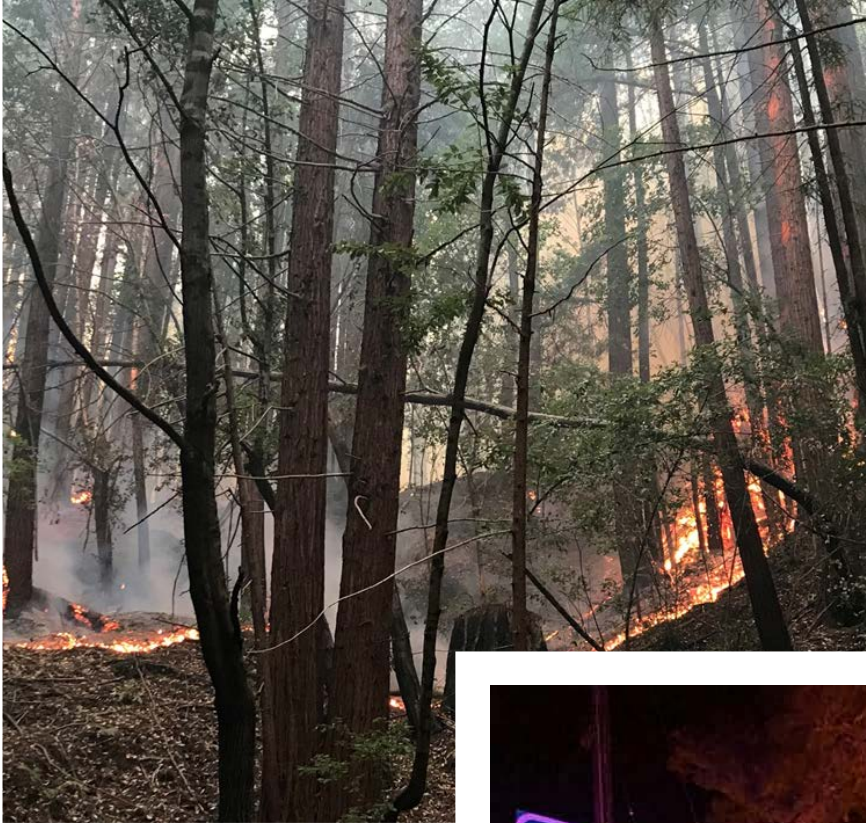
(650) 861-4084

JCOX@FIRE.CA.GOV

TWITTER: [@FIRECHIEFCOX](https://twitter.com/FIRECHIEFCOX)

[LINKEDIN](#)







WILDFIRE FUEL MANAGEMENT PROGRAM





PROGRAM GOALS

1. Planning and Budgeting Tool
 2. Identify, Evaluate, and Prioritize Projects Based on Data and Best Practices
 3. Monitor Projects to Adapt Maintenance Strategies
 4. Balance Fuel Reduction and Restoration/Preservation
- 
- 

Criteria

Criteria 1	Presence of Private Residences
Criteria 2	Presence of Park Building
Criteria 3	Wildland Urban Interface
Criteria 4	Fuel Type
Criteria 5	Vegetation Treatment Considerations
Criteria 6	Ecological Considerations
Criteria 7	Ingress/ Egress
Criteria 8	Fire Severity Zones
Criteria 9	Longevity
Criteria 10	Professional Judgement
Criteria 11	Joint Implementation
Criteria 12	Size of Project
Criteria 13	Funding and Capacity
Criteria 14	Permitting and Approvals

Rank ID	Project Name	Park Name	Cost
1	Maintenance of Fuel Breaks and Fire Roads in Wunderlich Park	Wunderlich County Park	\$ 625,600
2	Maintenance of Governor's Quarry Park Fuel Reduction Project	Quarry Park and Mirada East	\$ 170,000
3	Create and Maintain Shaded Fuel Breaks Along Pescadero Creek Road and Wurr Road	Memorial County Park	\$ 397,688
4	Create and Maintain a Shaded Fuel Break Along Crystal Springs Road Corridor - San Bruno	Junipero Serra County Park	\$ 141,400
5	Create and Maintain a Shaded Fuel Break Along Alta Vista Avenue and Crocker Avenue - Daly City	San Bruno Mountain State and County Park	\$ 584,500
6	Create and Maintain Shaded Fuel Break Along Park Boundary with Private Residences - San Bruno	Junipero Serra County Park	\$ 400,000
7	Create and Maintain Shaded Fuel Break along the Eastern and Southeastern Boundary	Edgewood County Park	\$ 491,300
8	Create and Maintain a Shaded Fuel Break Along Western Park Boundary	Quarry Park and Mirada East	\$ 125,750
9	Maintenance of Governor's King Mountain Road Fuel Reduction Project	Huddart County Park	\$ 362,338
10	Create and Maintain Defensible Space Along Park Boundary with Private Residences - Pacifica	San Pedro Valley	\$ 123,725
11	Create and Maintain a Shaded Fuel Break at the Crocker Street Entrance and Guadalupe Canyon Parkway - Daly City	San Bruno Mountain State and County Park	\$ 297,750
12	Treat and Maintain Cal FIRE CCI Forest Health Grant Project (Wunderlich)	Wunderlich County Park	\$ 1,641,678
13	Create and Maintain a Shaded Fuel Break Along the Southern Park Boundary	Edgewood County Park	\$ 70,700
14	Maintain Shaded Fuel Breaks and Fire Roads in Huddart Park	Huddart County Park	\$ 397,688
15	Create and Maintain a Fuel Break Along Park Boundary with Franciscan Park Community	San Bruno Mountain State and County Park	\$ 202,500
16	Create and Maintain a Shade Fuel Break Along Fire Roads in Quarry Park and Mirada East	Quarry Park and Mirada East	\$ 884,000
17	Wildfire Fuel and Hazard Tree Reduction Along Sawyer Camp Trail	Sawyer Camp Trail	\$ 389,500
18	Create and Maintain a Shaded Fuel Break Between Oak Cove Trail and Adjacent Private Residences - San Bruno	Junipero Serra County Park	\$ 39,769
19	Maintain Shaded Fuel Breaks Along Fire Roads in Memorial County Park	Memorial County Park	\$ 309,313
20	Removal of Gorse Along Saddle Loop Trail	San Bruno Mountain State and County Park	\$ 219,375
21	Treat and Maintain Cal FIRE CCI Forest Health Grant Project (Huddart)	Huddart County Park	\$ 1,641,678
22	Removal of Invasive Species Along Park Boundary with Pillar Ridge	Pillar Point Bluff	\$ 1,476,000
23	Remove Unhealthy Eucalyptus Trees from Iris Point Reservation Site	Junipero Serra County Park	\$ 111,375
24	Create and Maintain a Shaded Fuel Break Along Old Stage Road	Edgewood County Park	\$ 70,700
25	Create and Maintain Defensible Space Around Park Facilities and Infrastructure	Junipero Serra County Park	\$ 13,600
26	Create and Maintain Defensible Space Around Park Structures and Infrastructure in Huddart Park	Huddart County Park	\$ 222,750
27	Maintain Shaded Fuel Breaks Along Fire Roads Throughout Pescadero Creek County Park	Pescadero Creek County Park	\$ 1,687,963
28	Create and Maintain Defensible Space Around All Park Facilities and Infrastructure	All DIII Parks	\$ 883,750
29	Create and Maintain Fuel Breaks to Preserve First Responder Access	Sam McDonald County Park	\$ 1,051,663
30	Enhancement of First Responder Access on Old Stage Road and Sunset Trail	Edgewood County Park	\$ 21,750
31	Loop Fire Road Eucalyptus and Acacia Removal Project	Wunderlich County Park	\$ 277,500
32	Create and Maintain a Fuel Break Along Hazelnut Trail	San Pedro Valley	\$ 3,413,250
		Total	\$ 18,746,551

BEFORE

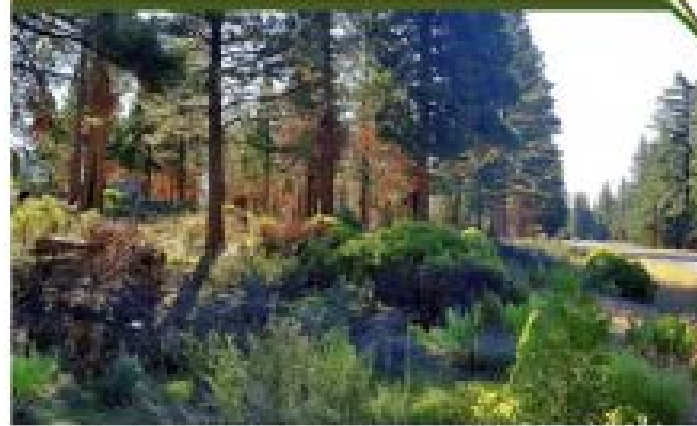


Removing brush strategically across the landscape interrupts fuel continuity which helps slow an advancing wildfire, allowing firefighters a safe place to defend nearby communities and protect natural resources.

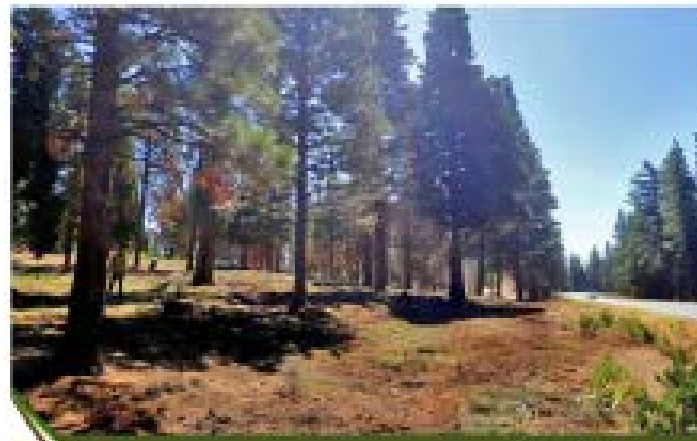


AFTER

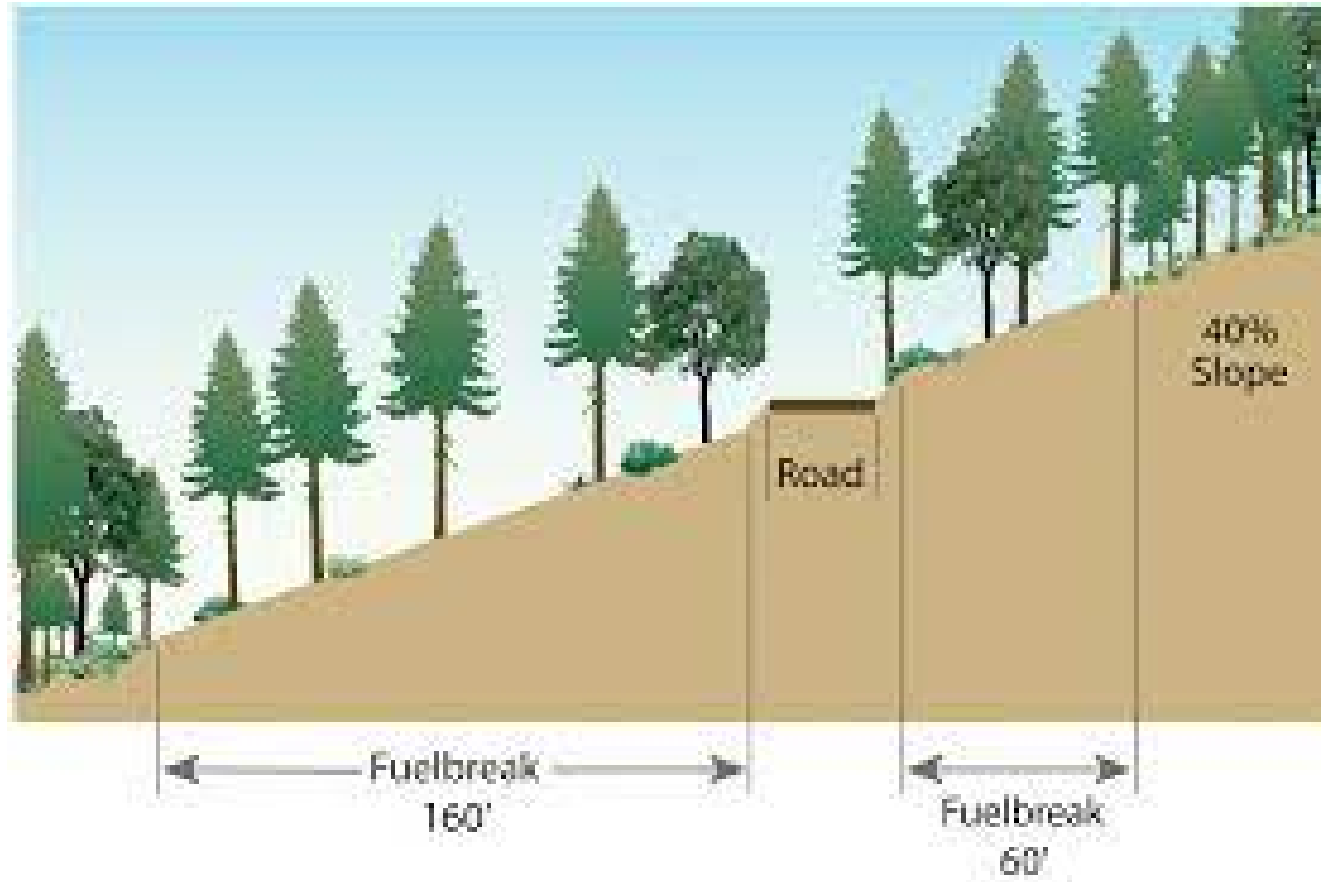
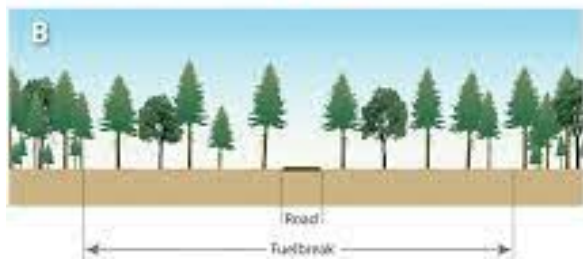
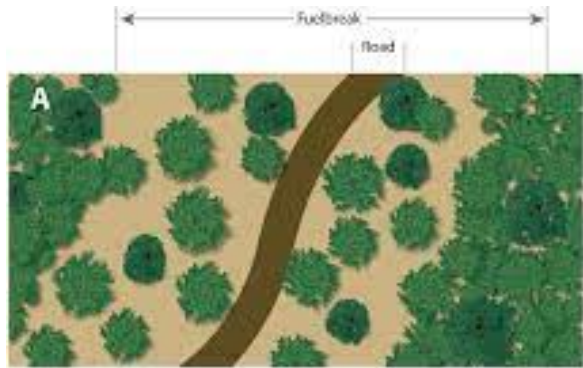
BEFORE

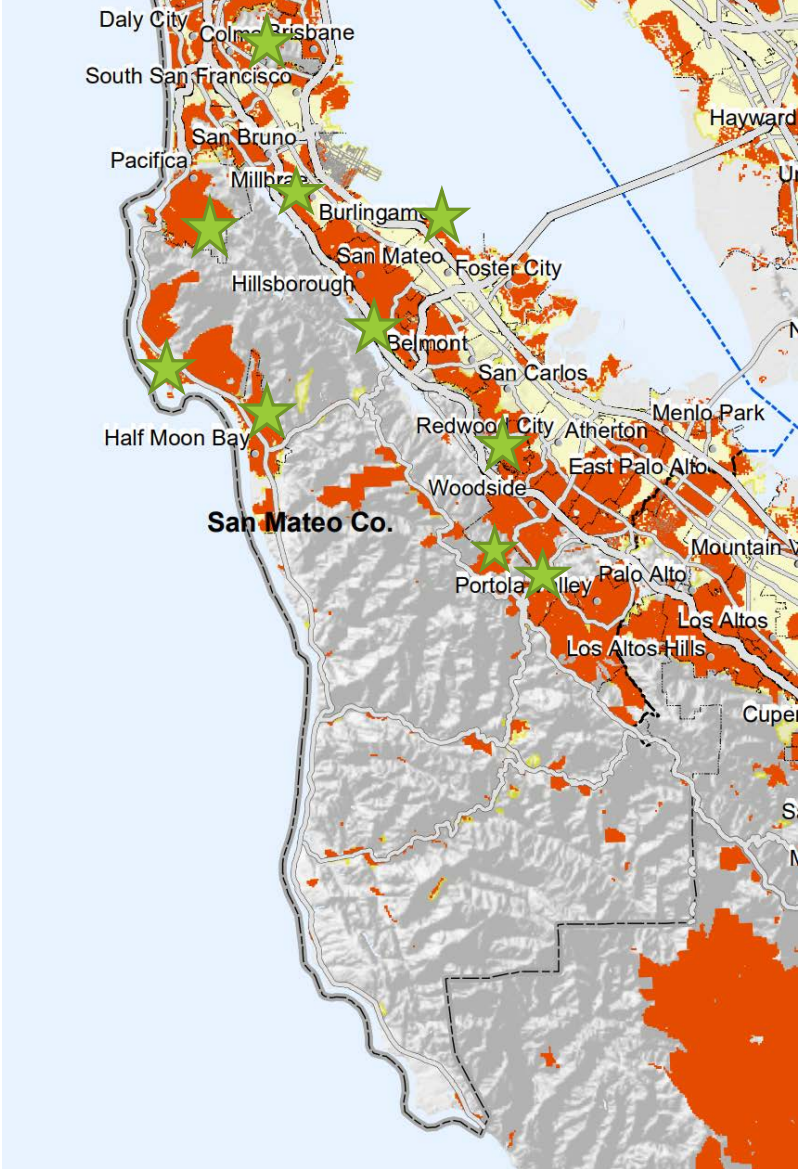


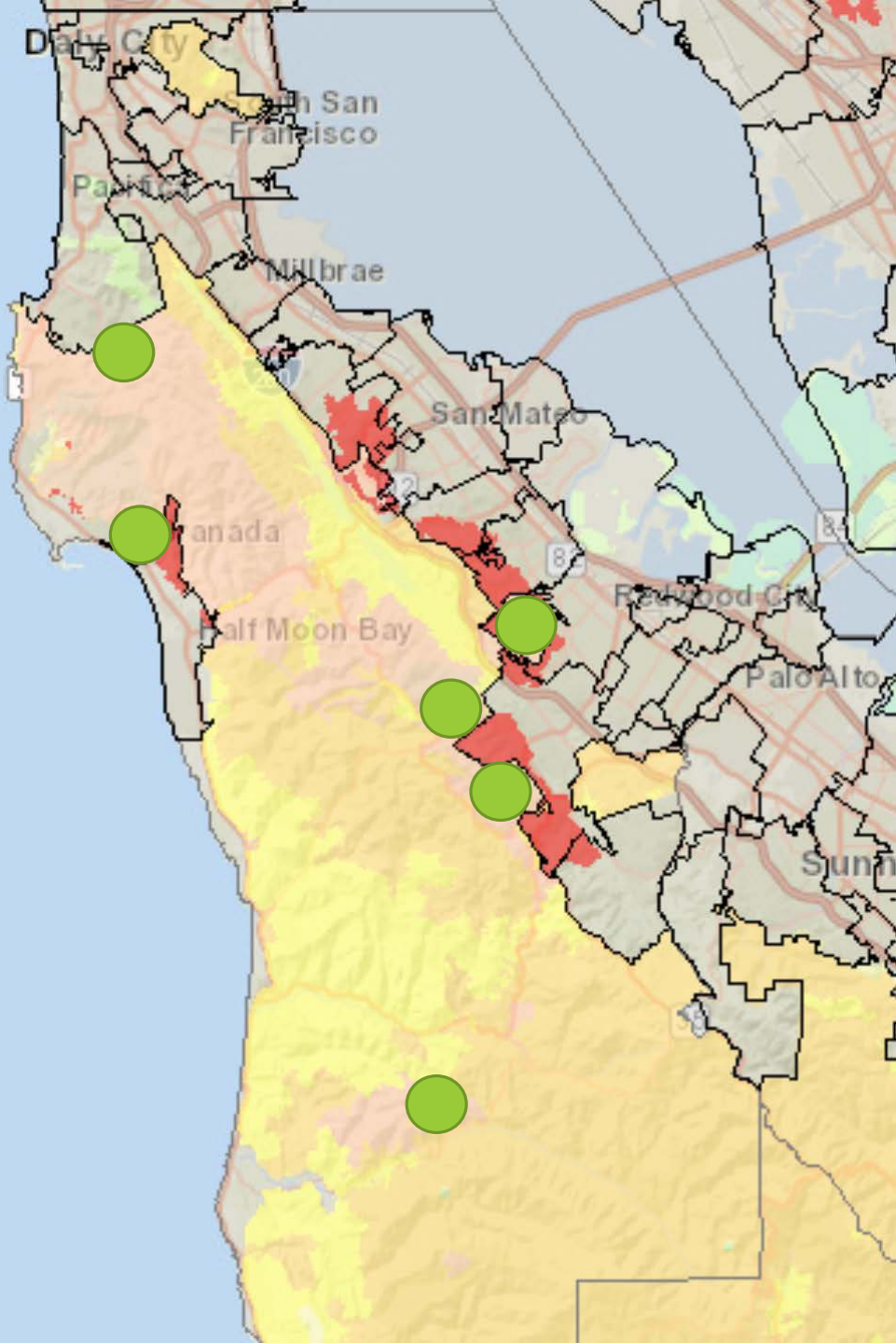
Skilled fuel breaks along roadways remove heavy fuels and are designed to prevent roadside sparks from becoming a devastating wildfire. They also create safer ingress and egress routes for emergency personnel and residents.



AFTER







FHSZ in LRA



VHFHSZ

FHSZ in SRA



Very High



High



Moderate

SRA

Questions?

