

June 8, 2021

Colma Creek
Citizen's Advisory Committee

San Mateo County
Flood & Sea Level Rise
Resiliency District

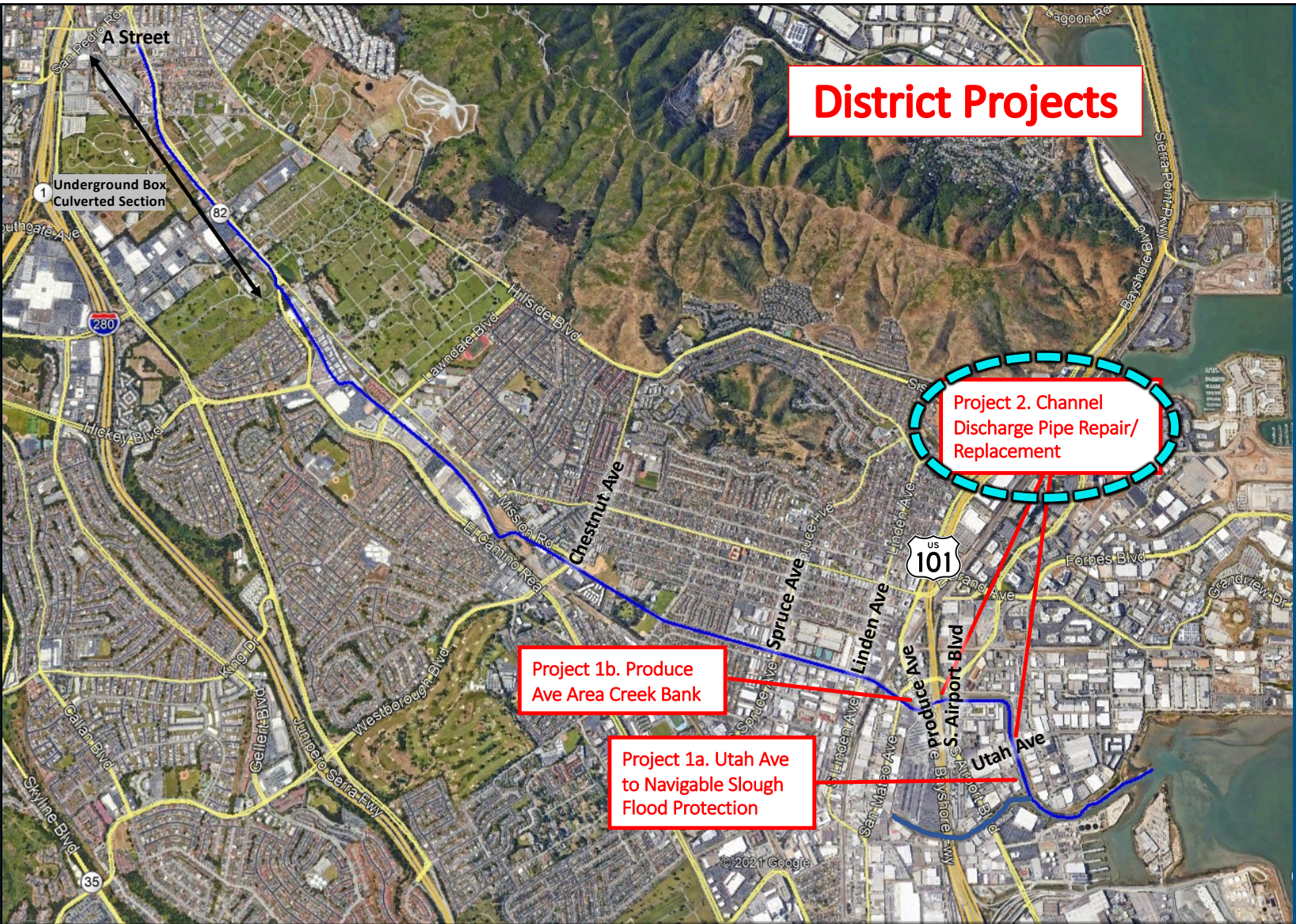
OneShoreline
Building Solutions for a Changing Climate

AGENDA

- I. Roll Call
- II. Approve minutes of the December 8, 2020 and March 9, 2021 meetings
- III. Public Comment
- IV. Update on Colma Creek Flood Zone Projects and Maintenance Activities
 - a. OneShoreline Project Summaries, Locations, and Budgets
 - b. Maintenance Agreement for Old Colma Creek in the Town of Colma
- V. Items recently approved by the OneShoreline Board
 - a. Changes to Colma Creek Citizens Advisory Committee Standing Rules
 - b. Appointment of Richard Irli as an at-large member of the Committee
- VI. Update to Colma Creek Hydrology & Hydraulic Model: future 100-year storm and 6 feet SLR
- VII. Adjournment

Meeting Objectives

- Present and answer questions on projects and maintenance activities in the Colma Creek Flood Zone
- Present Committee-related items recently approved by OneShoreline Board
- Discuss recent update to 2019 Colma Creek Modeling Report



District Projects

Appendix A Colma Creek Flood Zone Projects & Maintenance Activities

Activity 1b. El Camino Culvert and Mission Rd Diversion

District Projects

District Maintenance Activities

Project 2. Channel Discharge Pipe Repair/ Replacement

Activity 2. Sediment Dredging

Activity 3. Mitigation Site Maintenance

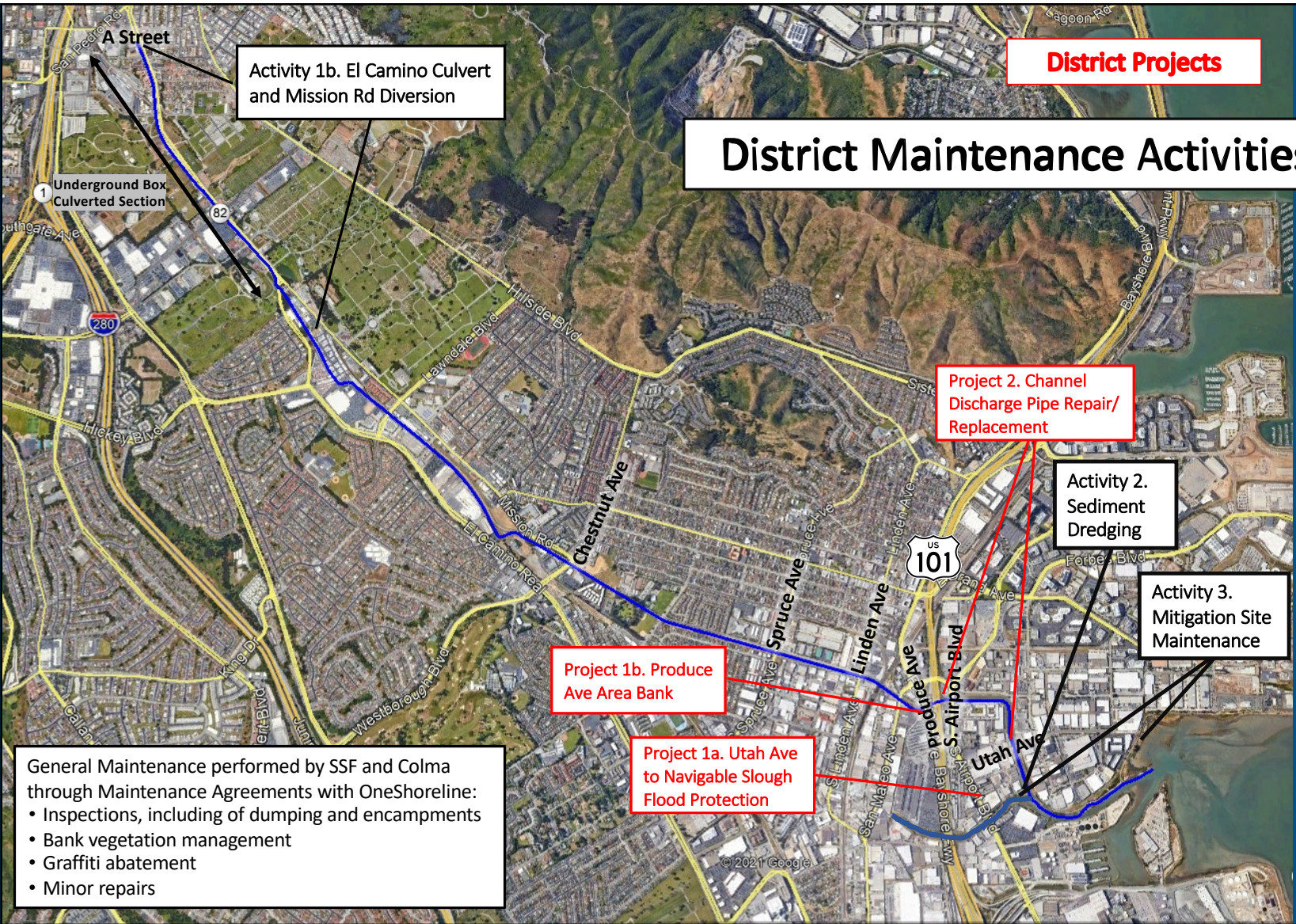
Project 1b. Produce Ave Area Bank

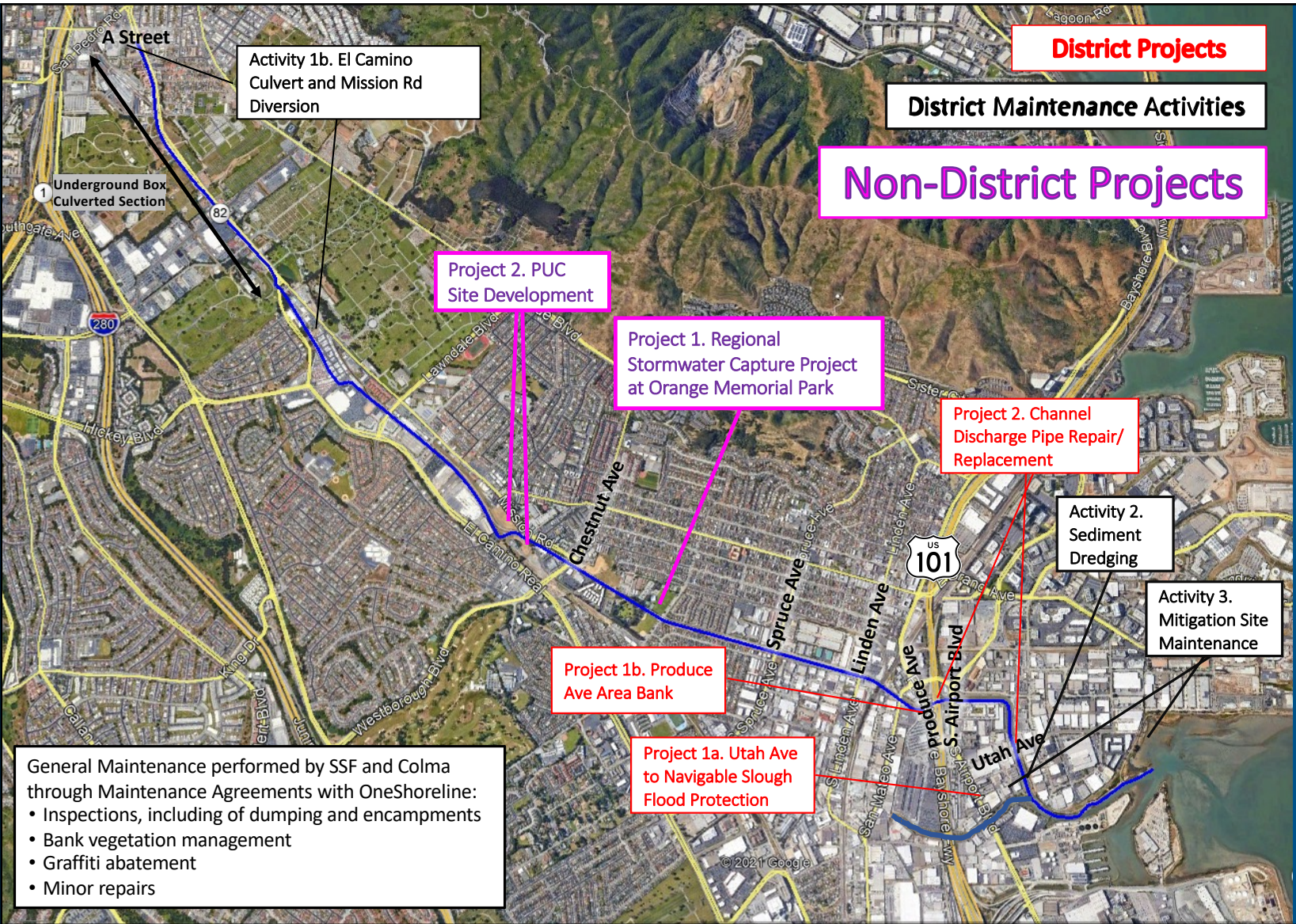
Project 1a. Utah Ave to Navigable Slough Flood Protection

General Maintenance performed by SSF and Colma through Maintenance Agreements with OneShoreline:

- Inspections, including of dumping and encampments
- Bank vegetation management
- Graffiti abatement
- Minor repairs

Appendix A Colma Creek Flood Zone Projects & Maintenance Activities





District Projects

District Maintenance Activities

Non-District Projects

**Appendix A
Colma Creek
Flood Zone Projects &
Maintenance Activities**

General Maintenance performed by SSF and Colma through Maintenance Agreements with OneShoreline:

- Inspections, including of dumping and encampments
- Bank vegetation management
- Graffiti abatement
- Minor repairs

Agreement with Town of Colma for Maintenance of Portions of a Key Tributary of Colma Creek

- Old Colma Creek (Tributary) is hydraulically connected to the Colma Creek Channel and helps manage stormwater overflows that exceed the capacity of the Channel
- Town of Colma has maintained portions of the Tributary within its borders for the past 25-plus years
- Collaboration between the District and Town improves the ability to monitor and control upstream water quality and flow conditions that ultimately impact the Colma Creek Channel
- District would reimburse Town for 50% of costs related four categories of maintenance activities: trash clean-up, graffiti and vandalism abatement, vegetation removal, and minor maintenance. Town will obtain all required permits and land rights, and then implement these activities.
- Agreement would remain in place until June 30, 2023, with a not-to-exceed amount of \$20,000

The recent change to the Advisory Committee Membership Rules

- Section 14 of the San Mateo County Flood Control District Act (“Section 14”) allows for the appointment of a flood zone advisory committee and specifies the requirements for Committee membership. The County Board of Supervisors established the Colma Creek Citizens Advisory Committee in 2002.
- In January 2020, the new District Board adopted standing rules for Committee governance which provided that:
 - Unless specific exception is made, no member shall serve more than three consecutive full (4 year) terms
 - All members must be property owners residing with the Zone
- These rules placed unnecessary restrictions on community members that are qualified and willing to serve, and were amended on May 24, 2021 by the District Board to return to the more inclusive guidelines in Section 14:
 - No term limits for members
 - All “at large” members shall be property owners residing within the Colma Creek Flood Zone and all city representative members shall be property owners residing within their respective city

Members of the Colma Creek Advisory Committee

Member Name/Designation	Appointed By	Member Since	Term Expiration
<i>City/Town Appointed Representatives (Members)</i>			
Helen Fiscaro, Town of Colma Representative	Colma Town Council	April 1, 2002	March 31, 2022
Sue Vaterlaus, City of Pacifica Representative	Pacifica City Council	April 1, 2018	March 31, 2024
Mike Futrell, City of South San Francisco Representative	South San Francisco City Council	July 23, 2014	March 31, 2022
Jovan Grogan, City of San Bruno Representative	San Bruno City Council	April 1, 2020	March 31, 2022
Raymond Buenaventura, City of Daly City Representative	Daly City Council	April 1, 2019	March 31, 2022
<i>Board Appointed Representatives (Members "At Large")</i>			
Gail DeFries, Town of Colma Member At Large	County Board of Supervisors	April 1, 2002	March 31, 2022
Edward Bortoli, City of South San Francisco Member At Large	County Board of Supervisors	December 31, 2014	March 31, 2022
Richard Irli, City of South San Francisco Member At Large	1 st & 2 nd Term: County Board of Supervisors 3 rd term: OneShoreline Board	September 9, 2014	March 31, 2025
Ryan Mayfield, City of South San Francisco Member At Large	OneShoreline Board	April 1, 2020	March 31, 2024

Update to 2019 Colma Creek Hydrology and Hydraulic Modeling Report

Table C-4. 1D HEC-RAS model results for future climate 100-year event. – Continued.

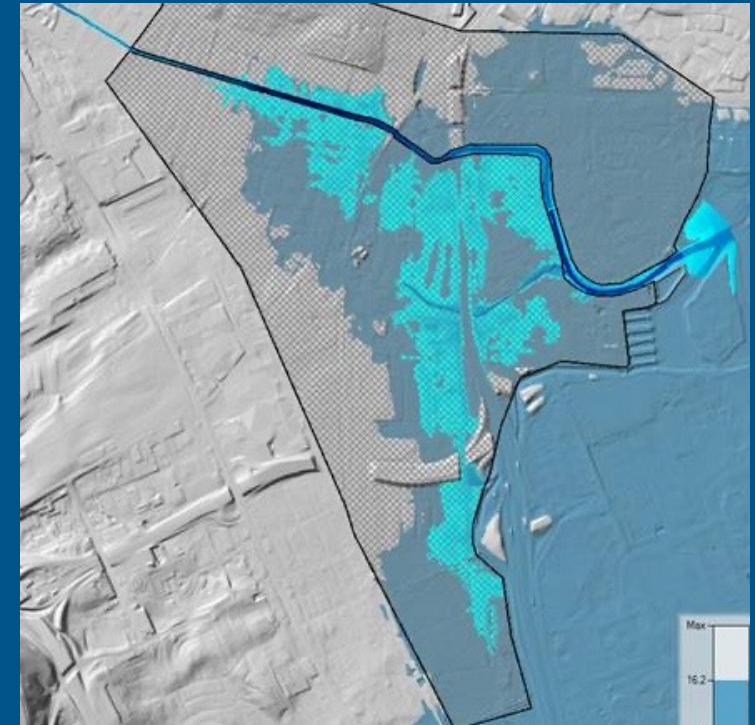
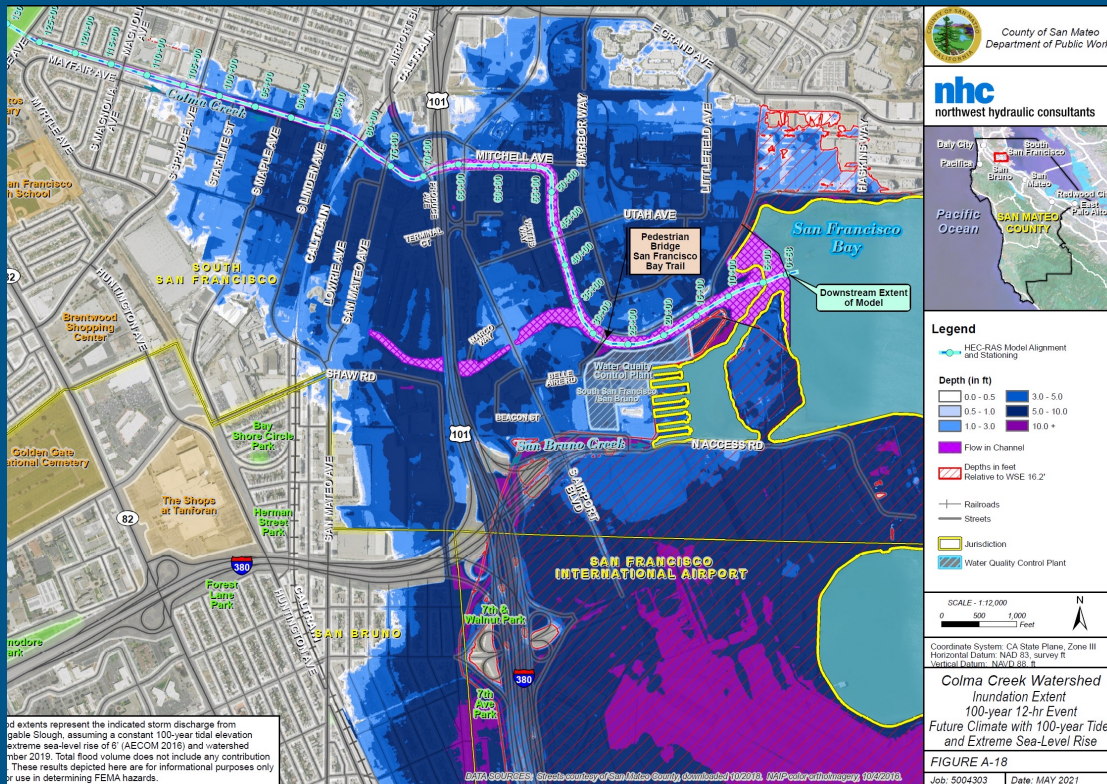
HEC-RAS station (ft)	Structure	Max WSE ¹ (ft NAVD88)	Max depth (ft)	Channel velocity (ft/s)	Bank top or structure soffit elevation ² (ft NAVD88)		Freeboard to top of bank or structure soffit ³ (ft)	
					Left	Right	Left	Right
10623	Dissipator teeth	16.8	12.1	11.1	14.4	14.4	-2.5	-2.5
10573		17.4	12.8	7.3	18.3	18.3	0.9	0.9
10368		17.4	12.9	6.9	20.2	20.2	2.8	2.8
10323		17.1	12.7	7.4	20.7	20.7	3.6	3.6
10308	Spruce Ave Bridge							
10224		17.4	15.1	6.1	17.0	17.0	-0.4	-0.4
10186		17.4	15.1	6.0	17.0	17.0	-0.4	-0.4
10123		17.1	14.9	6.7	17.0	17.0	-0.1	-0.1
8623		16.6	14.8	6.5	16.5	16.5	-0.1	-0.1

Four scenarios: Current 50-year, Current 100-year, Current 100-year with 3' SLR, Future 100-year

Contact Makena Wong (mwong@OneShoreline.org)
for more info



Update to the Modeling Report: Future 100-year storm + 6' sea level rise



Contact Makena Wong (mwong@OneShoreline.org)
for more info

 OneShoreline.org

Next Advisory Committee Meeting

September 14, 2021 at 3:00 pm



Shoreline