

September 14, 2021

Colma Creek Citizens Advisory Committee Meeting

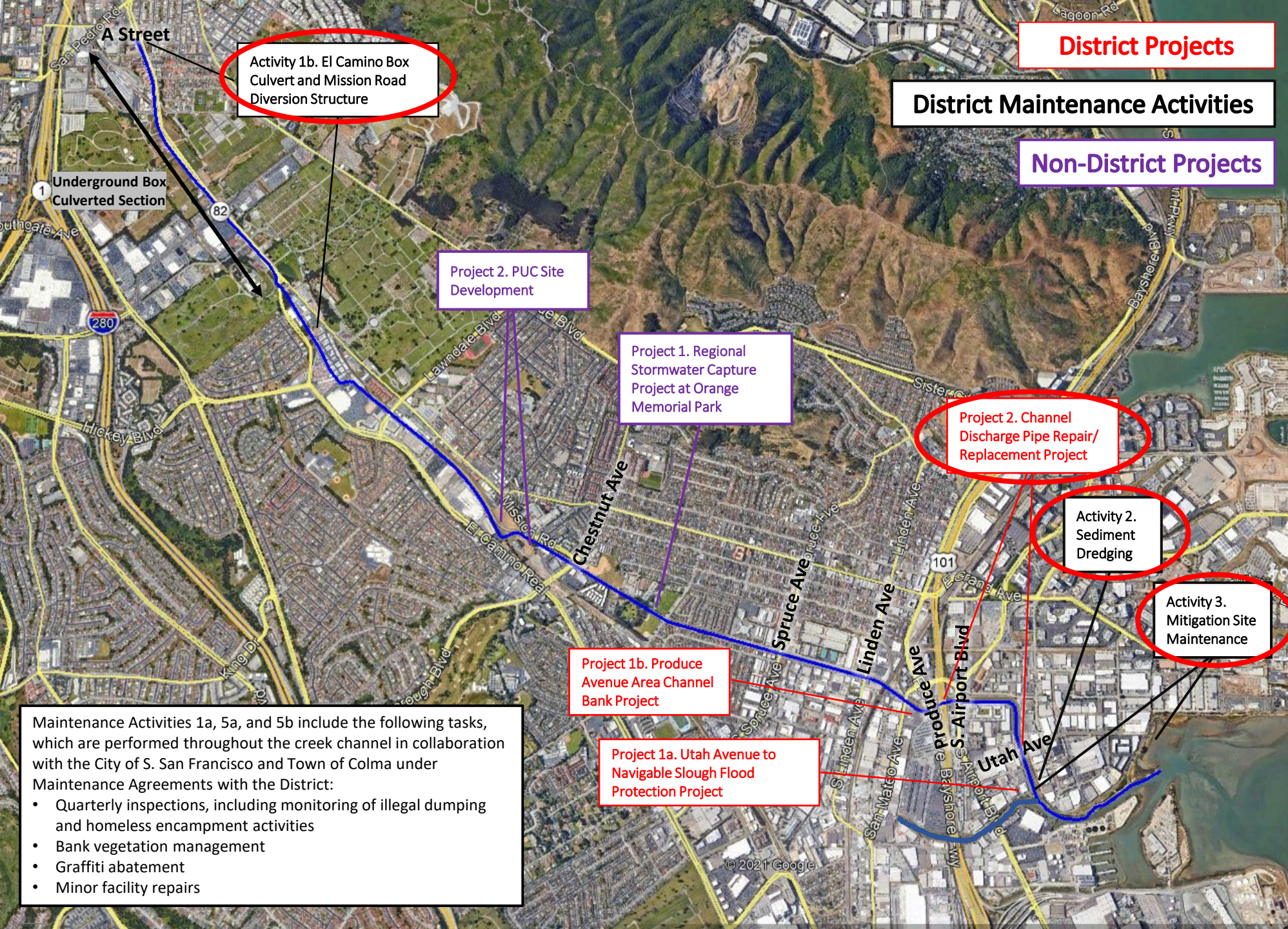
AGENDA

- I. Roll Call
- II. Approve minutes of the June 8, 2021, meeting
- III. Public Comment
- IV. Update on Colma Creek Flood Zone Projects and Maintenance Activities
 - a. Channel Discharge Pipe Repair/Replacement Project between Hwy. 101 and Utah Ave.
 - b. El Camino Box Culvert and Mission Road Diversion Structure
 - c. Work Completed through Maintenance Agreement with BART
- V. Update on Orange Memorial Park Project Construction
- VI. Countywide Future Conditions Dashboard, beginning with Colma Creek
- VIII. Adjournment

Agenda item 4

Update on Colma Creek Flood Zone Projects and Maintenance Activities

- a. Channel Discharge Pipe Repair/Replacement Project between Hwy. 101 – Utah Ave.**
- b. El Camino Box Culvert and Mission Road Diversion Structure**
- c. Work Completed through Maintenance Agreement with BART**



Activity 1b. El Camino Box Culvert and Mission Road Diversion Structure

District Maintenance Activities

Non-District Projects

Project 2. PUC Site Development

Project 1. Regional Stormwater Capture Project at Orange Memorial Park

Project 2. Channel Discharge Pipe Repair/Replacement Project

Activity 2. Sediment Dredging

Activity 3. Mitigation Site Maintenance

Project 1b. Produce Avenue Area Channel Bank Project

Project 1a. Utah Avenue to Navigable Slough Flood Protection Project

Maintenance Activities 1a, 5a, and 5b include the following tasks, which are performed throughout the creek channel in collaboration with the City of S. San Francisco and Town of Colma under Maintenance Agreements with the District:

- Quarterly inspections, including monitoring of illegal dumping and homeless encampment activities
- Bank vegetation management
- Graffiti abatement
- Minor facility repairs

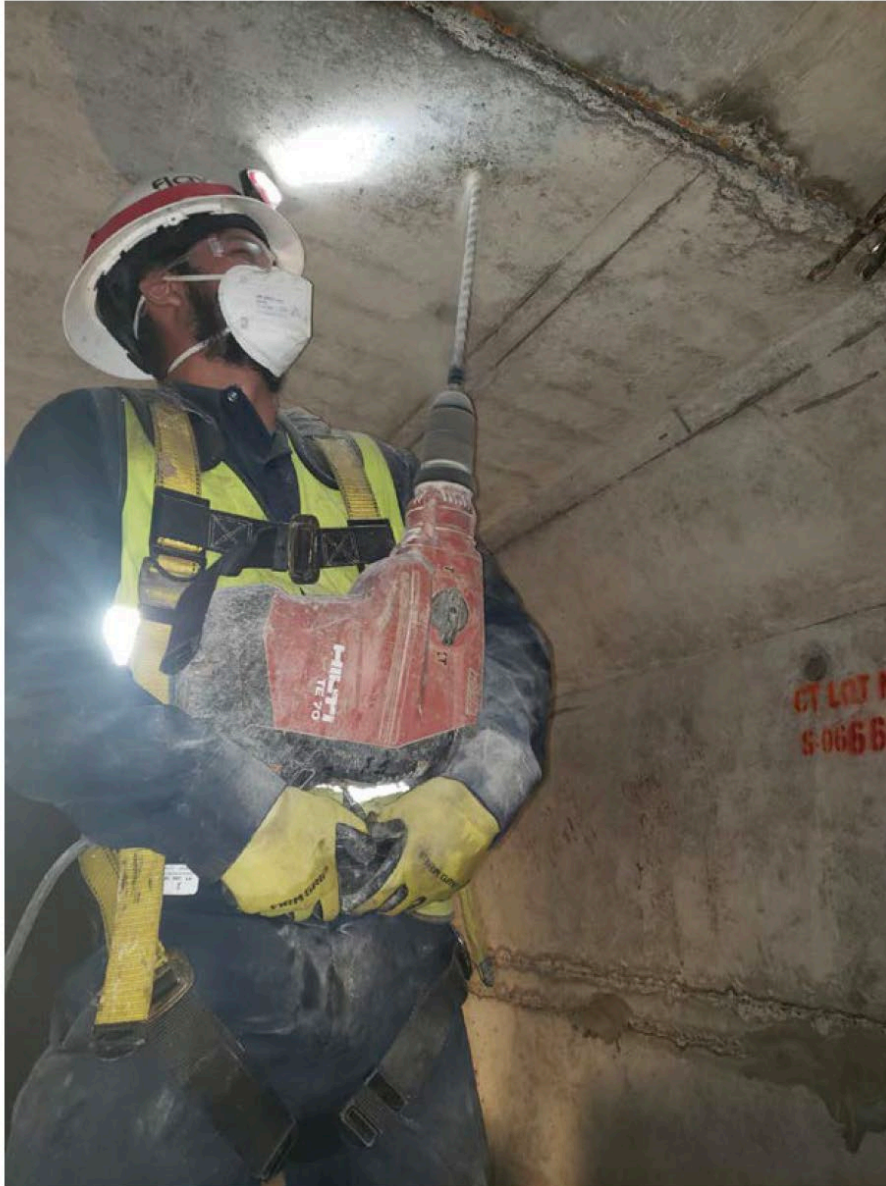
Appendix A.
Map of Colma Creek
Flood Zone Projects and
Maintenance Activities

El Camino Real Box Culvert Repairs



Photos 1 & 2 – Photos 1 & 2 show completed leaky and spalling joint repairs at locations #20 and #21 inside the El Camino Real box culvert, taken in August 2021. Filled holes on the side and top walls were for injection of polymer material as a preventative measure to fill small cracks and voids in the concrete. A total of 45 repair locations were identified for this segment of the channel. Subcontractor EagleLift (working under the County's JOC Andreini Bros, Inc.) began repair activities in late June, completing all necessary repairs in August. A final inspection by the structural engineers from Biggs Cardosa Associates of all the repaired has been tentatively scheduled for Sept. 15, 2021.

El Camino Real Box Culvert Repairs



Photos 3 & 4 – El Camino Real box culvert repairs in progress. Left photo shows holes for the polymer injection were being drilled. Right photo shows polymer material being injected into the holes which is engineered to expand and fill cracks and voids in the concrete.

BART Section Expansion Joint Repairs



Photos 5 & 6 – Photo 5 shows a repaired expansion joint. As of Sept. 10th, 6 of the 14 joints to be replaced have been completed. Challenges encountered by the contractor during this work included active nests (Photo 6 shows a hummingbird nest) that were found and higher than expected flows from storm drains along the project sites. Approximately 7 nests were observed within the work area. Although the nests did not disrupt or delay construction, daily biological monitoring was required until the nestlings fledged.

BART Section Expansion Joint Repairs



Photos 7 & 8 – Photo 7 shows the primary bypass pipe system installed to divert water from upstream of the El Camino Real box culvert and Old Colma Creek channels. The long-term maintenance permits require the work areas to be dry. In order to replace the material in the channel bottom expansion joints, the contractor had to install a secondary bypass (Photo 8) for several sections (joints) at a time and relocate to another group of joints downstream until all the joints have been repaired.

N. Canal Street Channel Sidewalk Repairs – Construction commenced on 9/13/2021



Produce Avenue Sediment Dredging – Construction commenced on 9/9/2021



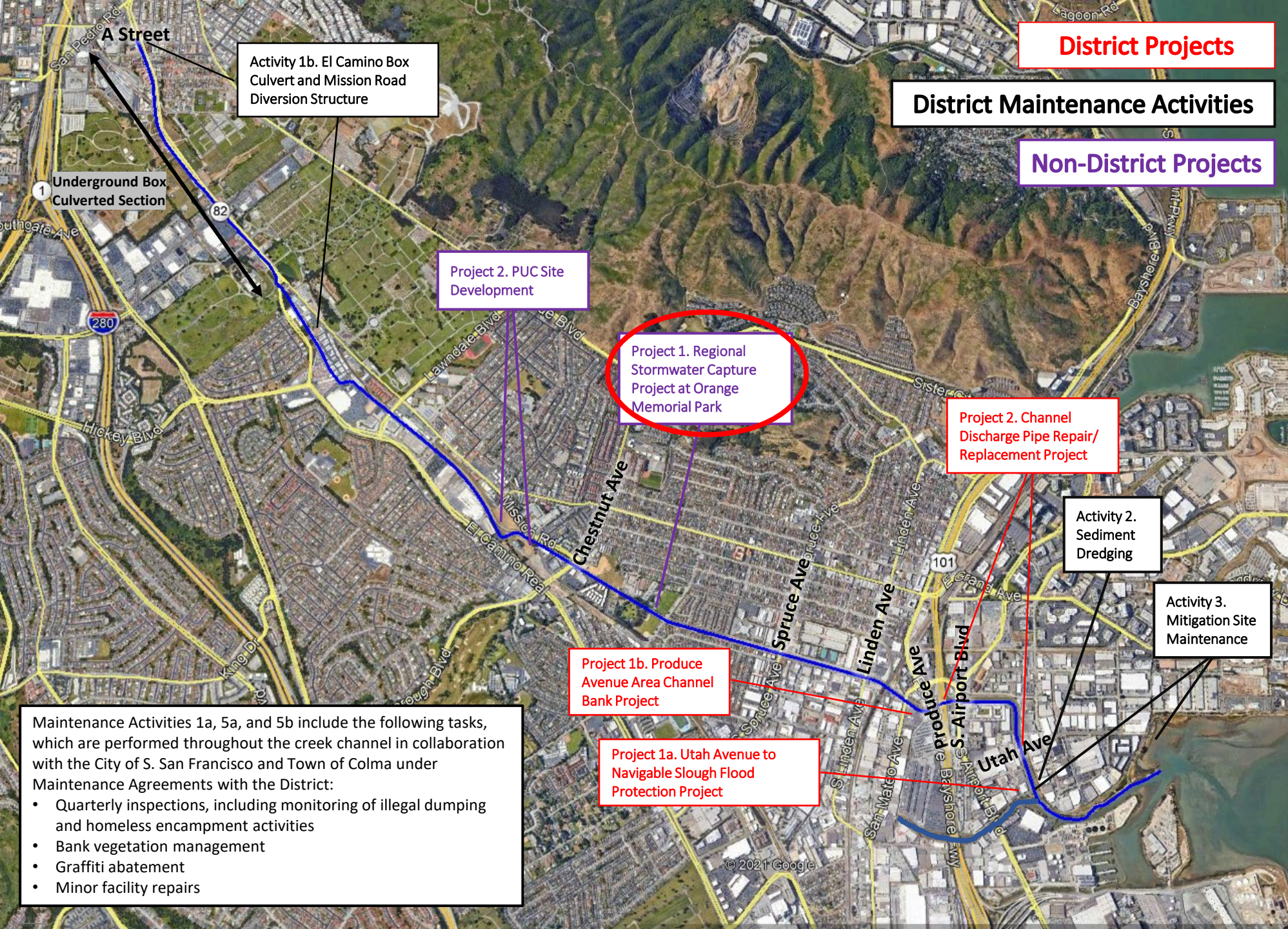
Colma Creek Habitat Mitigation Sites – Regulatory Agency Permit Compliance Update



The U.S. Army Corp of Engineers (ACE) provided official notification that mitigation sites 2 & 3 have met the native plant coverage success criteria and therefore satisfied the conditions of its permit after 8 years of maintenance. However, for Site 4 the U.S. Fish and Wildlife Services is the appropriate authority to determine compliance with the terms and conditions of its biological opinion, dated March 27, 2003, amended by letters of April 5, 2011, and April 26, 2011. It is County staff's opinion that Site 4 already met the 80% native plant coverage. County staff will be following up with the USFWS on the status of Site 4.

Agenda item 5

Update on Orange Memorial Park Project Construction



Activity 1b. El Camino Box Culvert and Mission Road Diversion Structure

District Projects

District Maintenance Activities

Non-District Projects

Project 2. PUC Site Development

Project 1. Regional Stormwater Capture Project at Orange Memorial Park

Project 2. Channel Discharge Pipe Repair/Replacement Project

Activity 2. Sediment Dredging

Activity 3. Mitigation Site Maintenance

Project 1b. Produce Avenue Area Channel Bank Project

Project 1a. Utah Avenue to Navigable Slough Flood Protection Project

Maintenance Activities 1a, 5a, and 5b include the following tasks, which are performed throughout the creek channel in collaboration with the City of S. San Francisco and Town of Colma under Maintenance Agreements with the District:

- Quarterly inspections, including monitoring of illegal dumping and homeless encampment activities
- Bank vegetation management
- Graffiti abatement
- Minor facility repairs

Appendix A.
Map of Colma Creek
Flood Zone Projects and
Maintenance Activities

Agenda item 6

Countywide Future Conditions Dashboard, beginning with Colma Creek

OneShoreline is developing a Future Conditions Dashboard to help city staff, homeowners, businesses, and developers visualize and plan for climate change.



NEW MISSION ROAD
CROSSWALK

Colma Creek Future Conditions Dashboard

This dashboard visualizes flooding under **future conditions** in areas adjacent to Colma Creek. The data has been developed to provide stakeholders (including **developers, City staff, homeowners, floodplain managers, planners, engineers, etc.**) with readily accessible flood elevations where such interactive data was not previously available. These future condition flood elevations can be used for advisory purposes to improve the accuracy and efficiency of floodplain management and permitting decisions when considering long-term climate impacts; these elevations are not analogous to base flood elevations (BFEs) used in Effective FEMA Flood Insurance Rate Maps (FIRMs).

Use the select tool in the top left corner of the map to click the map and display the future conditions flood elevation below.

Use the layers tool in the top right corner of the map to show/hide map layers.

Click the arrow on the left to see available map layer filters.

The map also includes land use (including the South San Francisco's General Plan Preferred Alternative), tree cover, parcel, and demographic data to help identify opportunities to provide community benefits along Colma Creek.

Introduction

More Info

Future Conditions

43.21 ft

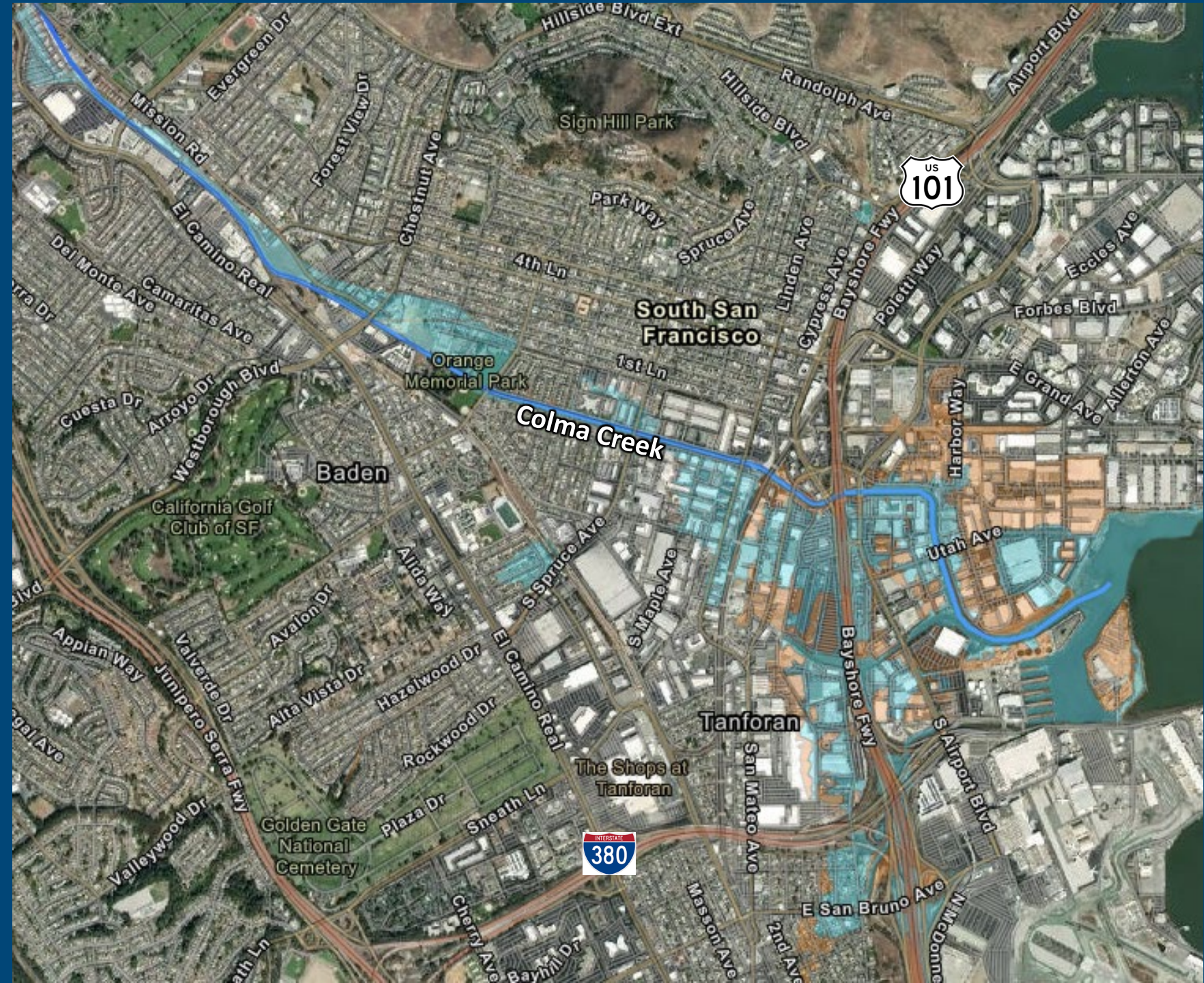
Water Surface Elevation (NAVD88)



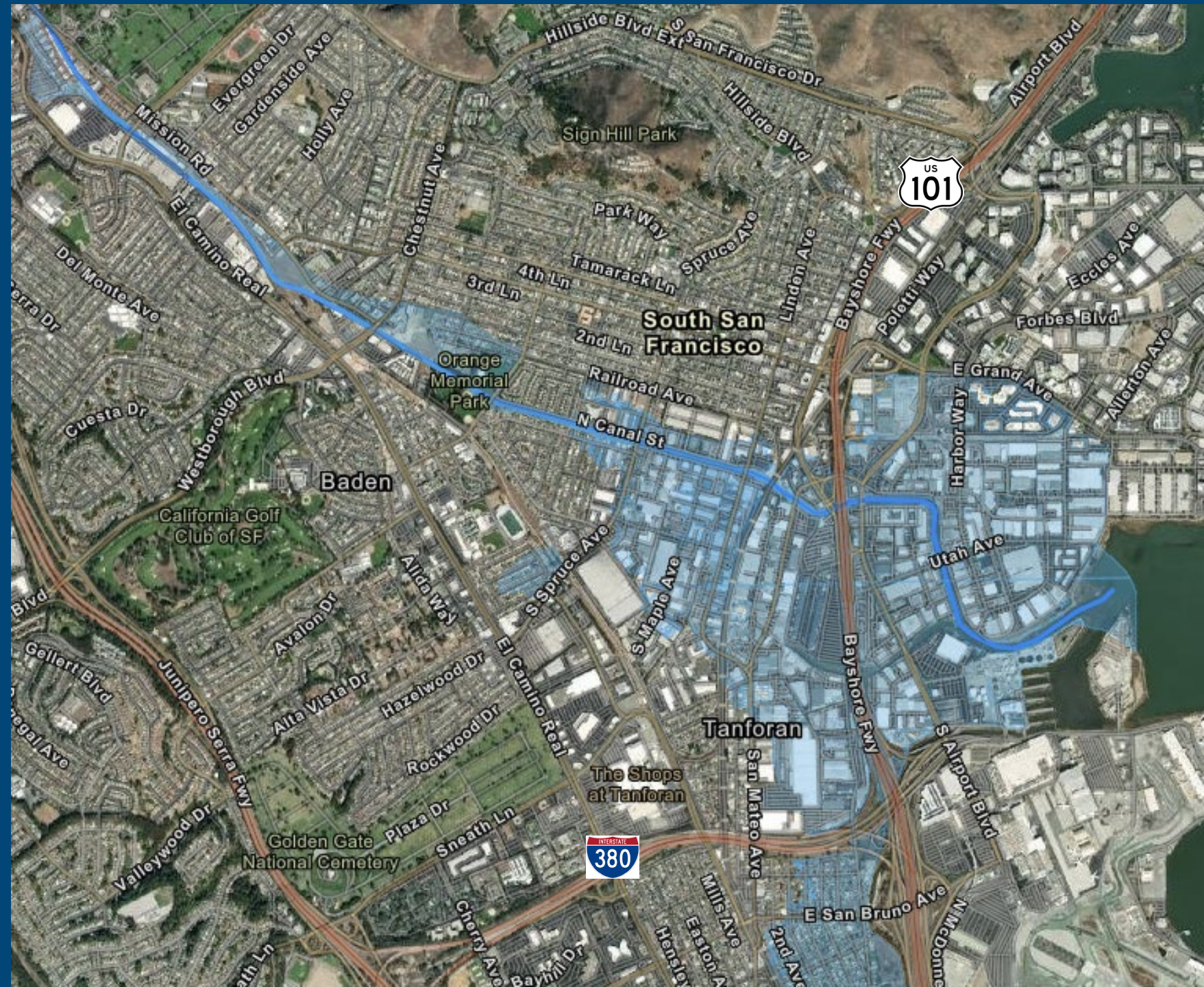
Future 100-Year Event + 6' SLR
Water Surface Elevation



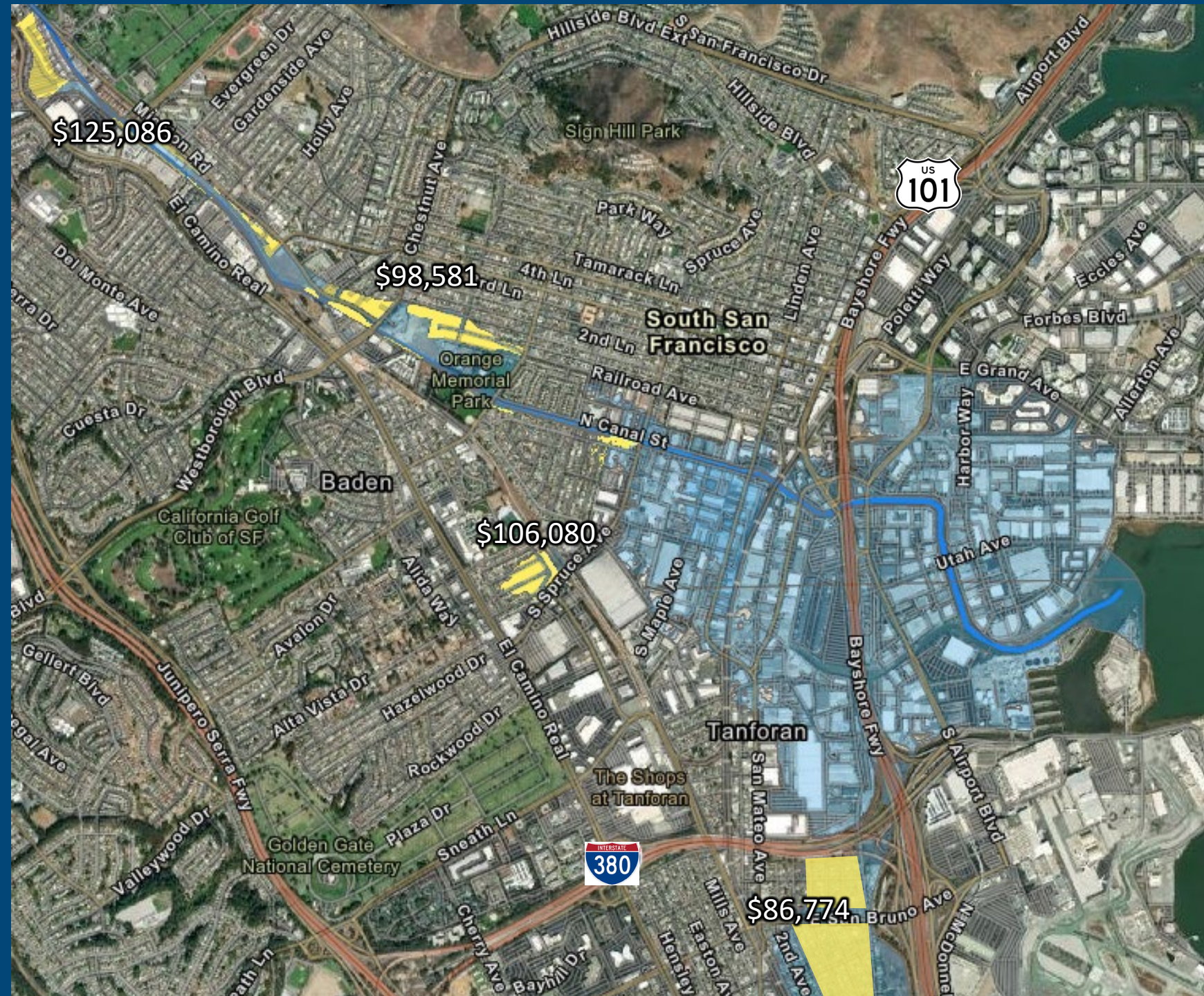
FEMA Flood Zone



Future Flood Conditions with Sea Level Rise



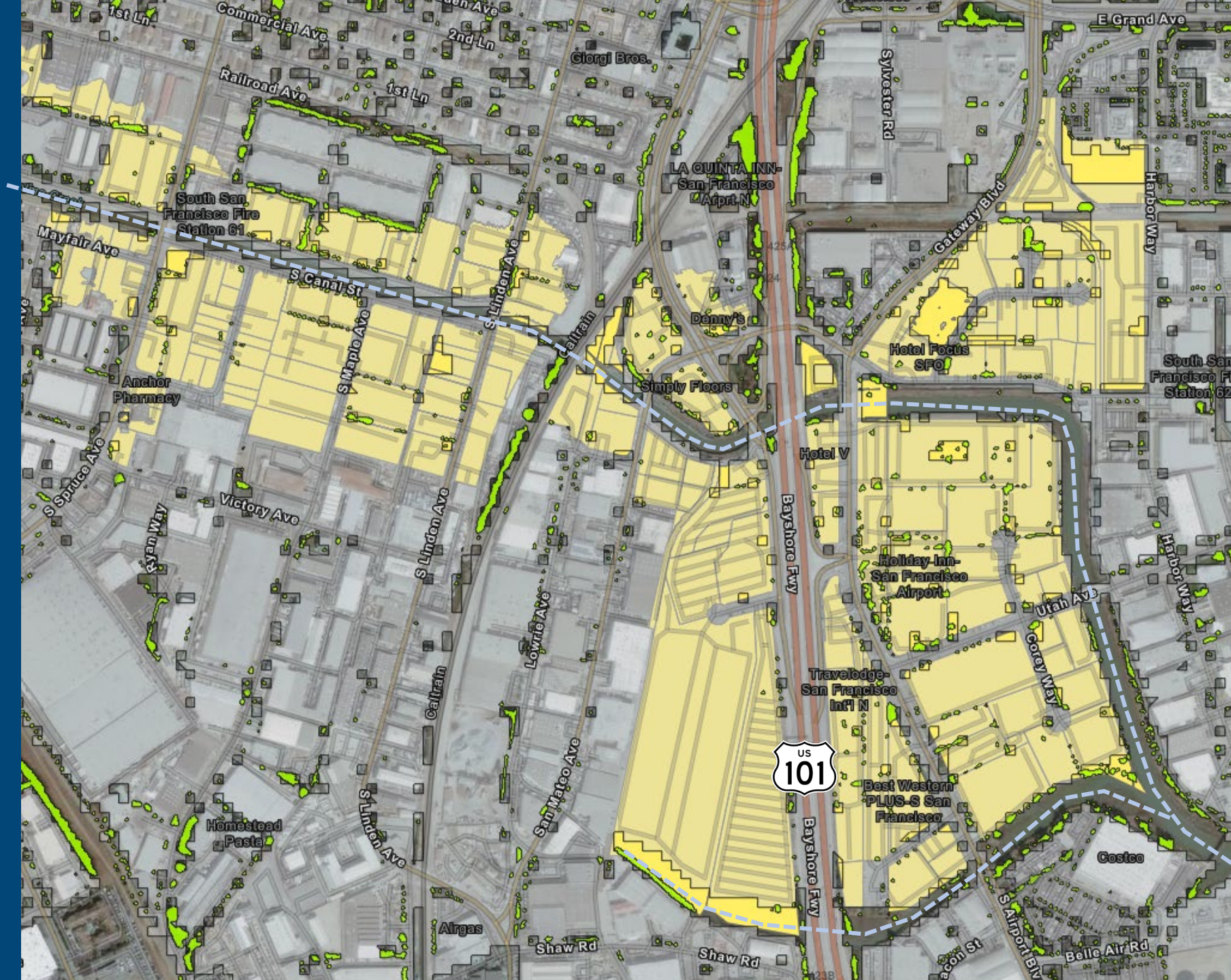
Current **residential** median household income impacted by future flooding conditions



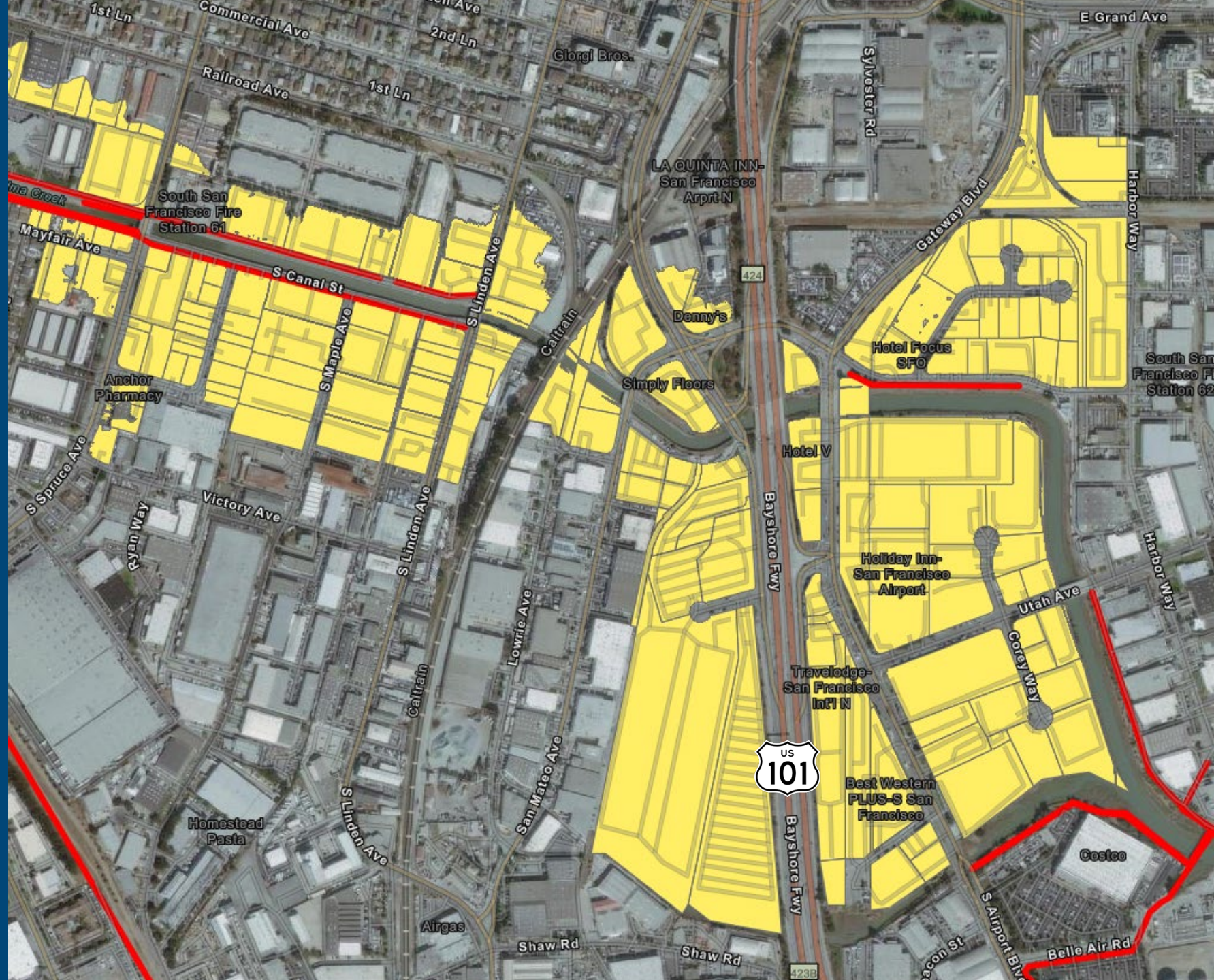
Proposed
Residential land
use in SSF General
Plan Update
impacted by future
flooding conditions



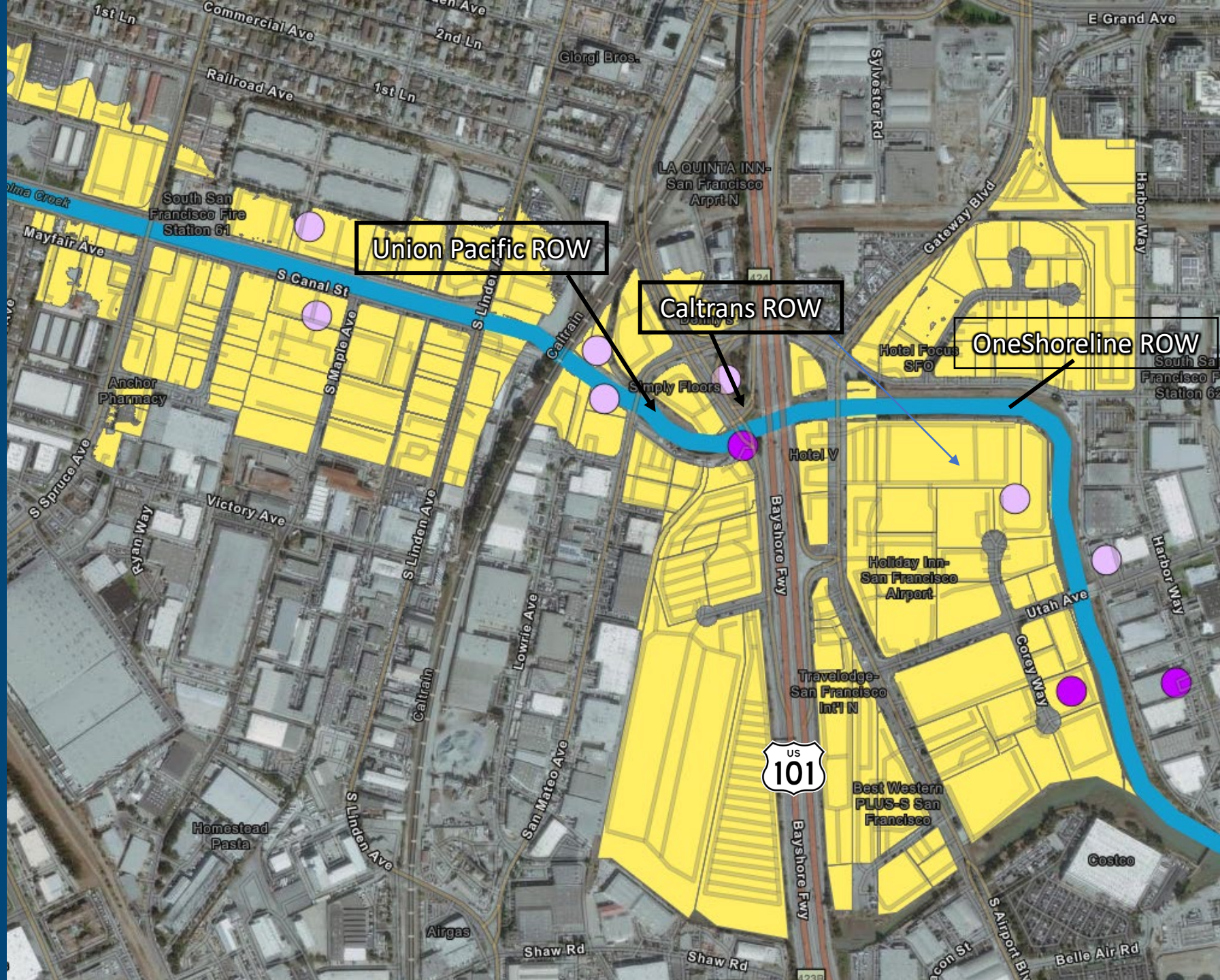
Residential land use proposed in SSF General Plan impacted by future flooding conditions and existing **tree cover**



Residential land use proposed in SSF General Plan impacted by future flooding conditions and existing **trails**



Land rights
and
project
opportunities



NEXT MEETING:
Tuesday, December 14, 2021
3:00 p.m.