

March 8, 2022

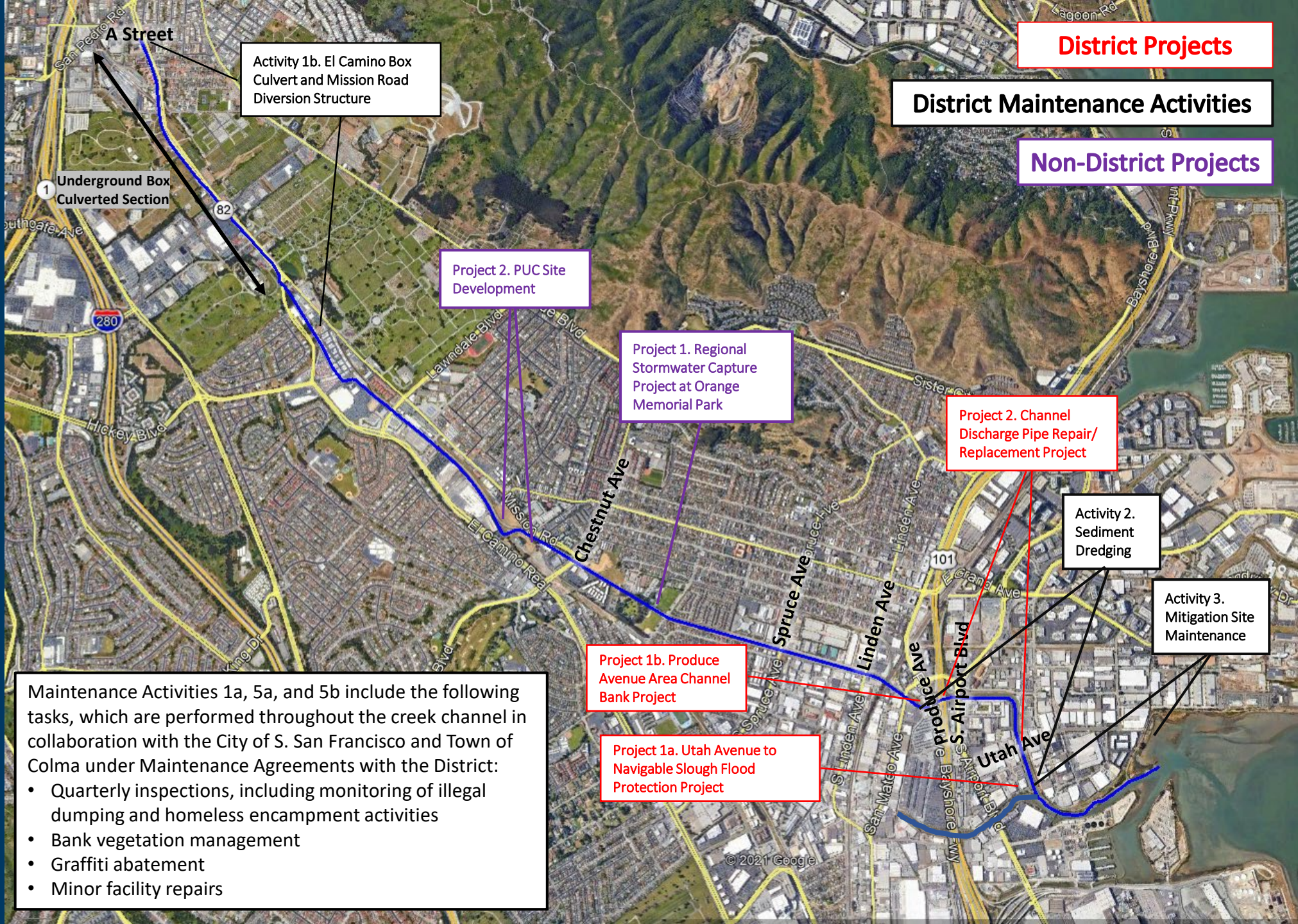
Colma Creek Citizens Advisory Committee Meeting

AGENDA

- I. Roll Call**
- II. Public Comment**
- III. Action to set the Agenda and approve the Consent Agenda**
 - A. Adopt Resolution 2021-03-08 to continue conducting meetings of the Board of Directors remotely due to public health concerns caused by the COVID-19 pandemic**
 - B. Approve minutes of the December 14, 2021, meeting**
- IV. Update on Colma Creek Flood Zone Projects and Maintenance Activities**
- V. Lower Colma Creek U.S. Army Corps of Engineers Project**
- VI. Committee Member Term Renewals**
- VII. Adjournment**

Agenda Item 4

Update on Colma Creek Flood Zone Projects and Maintenance Activities



District Projects

District Maintenance Activities

Non-District Projects

Activity 1b. El Camino Box Culvert and Mission Road Diversion Structure

Underground Box Culverted Section

Project 2. PUC Site Development

Project 1. Regional Stormwater Capture Project at Orange Memorial Park

Project 2. Channel Discharge Pipe Repair/Replacement Project

Activity 2. Sediment Dredging

Activity 3. Mitigation Site Maintenance

Project 1b. Produce Avenue Area Channel Bank Project

Project 1a. Utah Avenue to Navigable Slough Flood Protection Project

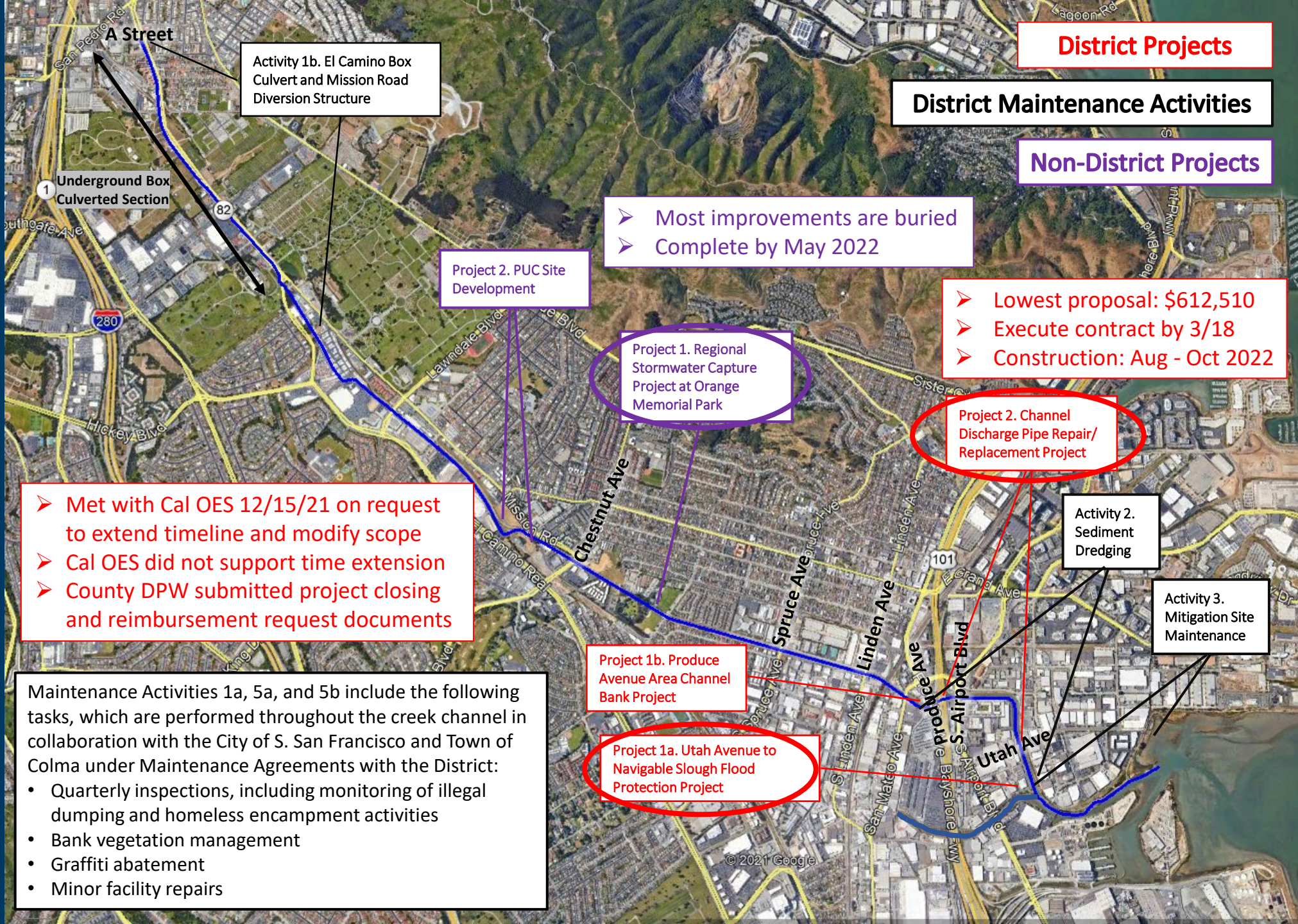
Maintenance Activities 1a, 5a, and 5b include the following tasks, which are performed throughout the creek channel in collaboration with the City of S. San Francisco and Town of Colma under Maintenance Agreements with the District:

- Quarterly inspections, including monitoring of illegal dumping and homeless encampment activities
- Bank vegetation management
- Graffiti abatement
- Minor facility repairs

Appendix A
Map of Colma Creek Flood Zone Projects and Maintenance Activities

Agenda Item 4

Update on Colma Creek Flood Zone Projects and Maintenance Activities



District Projects

District Maintenance Activities

Non-District Projects

➤ Most improvements are buried
➤ Complete by May 2022

➤ Lowest proposal: \$612,510
➤ Execute contract by 3/18
➤ Construction: Aug - Oct 2022

➤ Met with Cal OES 12/15/21 on request to extend timeline and modify scope
➤ Cal OES did not support time extension
➤ County DPW submitted project closing and reimbursement request documents

Maintenance Activities 1a, 5a, and 5b include the following tasks, which are performed throughout the creek channel in collaboration with the City of S. San Francisco and Town of Colma under Maintenance Agreements with the District:

- Quarterly inspections, including monitoring of illegal dumping and homeless encampment activities
- Bank vegetation management
- Graffiti abatement
- Minor facility repairs

Project 1b. Produce Avenue Area Channel Bank Project

Project 1a. Utah Avenue to Navigable Slough Flood Protection Project

Project 2. Channel Discharge Pipe Repair/Replacement Project

Project 1. Regional Stormwater Capture Project at Orange Memorial Park

Project 2. PUC Site Development

Activity 1b. El Camino Box Culvert and Mission Road Diversion Structure

Activity 2. Sediment Dredging

Activity 3. Mitigation Site Maintenance

1 Underground Box Culverted Section

Appendix A
Map of Colma Creek Flood Zone Projects and Maintenance Activities

Project Updates: South San Francisco General Plan Outreach Series

- **Wed, March 8, 6 pm – Virtual Community Advisory Committee**
- **Tue, March 22, 3 pm – In-person Community Open House @ Orange Memorial Park, Fernekes Bldg**
- **Wed, April 6, 6 pm – Joint City Council/Planning Commission Study Session #2 (potential for hybrid in-person / virtual, TBD)**
- **Tue, April 12, 6 pm – Virtual Community Advisory Committee**
- **Wed, April 20, 6 pm – Joint City Council/Planning Commission Study Session #3 (potential for hybrid in-person / virtual, TBD)**

Details, including links to join virtual events, are outlined at the City website (www.shapessf.com).

OneShoreline is in communication with the City on this effort and, at a future Committee meeting, we'll discuss the General Plan as it relates to Colma Creek.



Project Updates: Municipal Regional Permit Outreach

OneShoreline and County staff, in conjunction with Ecological Concerns, Inc., hosted a Habitat Restoration and Cleanup event to plant native plants and pick up trash on March 5 with students from the Alta Loma Middle School in South San Francisco.



Agenda Item 5

Lower Colma Creek U.S. Army Corps of Engineers Project

LOWER COLMA CREEK CAP 103 PROJECT

SOUTH SAN FRANCISCO CITY COUNCIL BRIEFING ON TENTATIVELY SELECTED PLAN

May 25, 2022

SPD Regional CAP Production Center
San Francisco District
City of South San Francisco
City of South San Francisco and San Bruno
Water Quality Control Plant

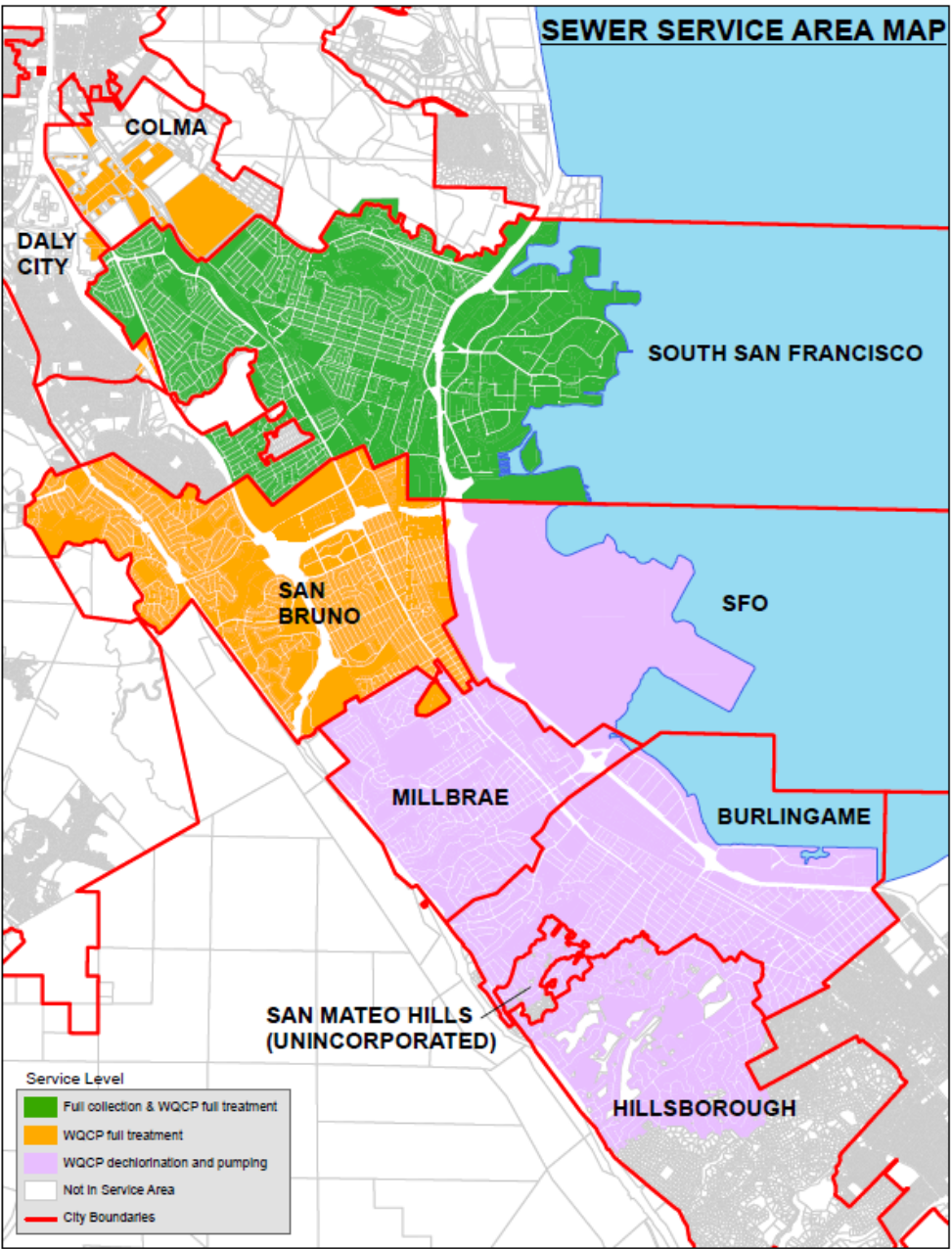


US Army Corps
of Engineers®





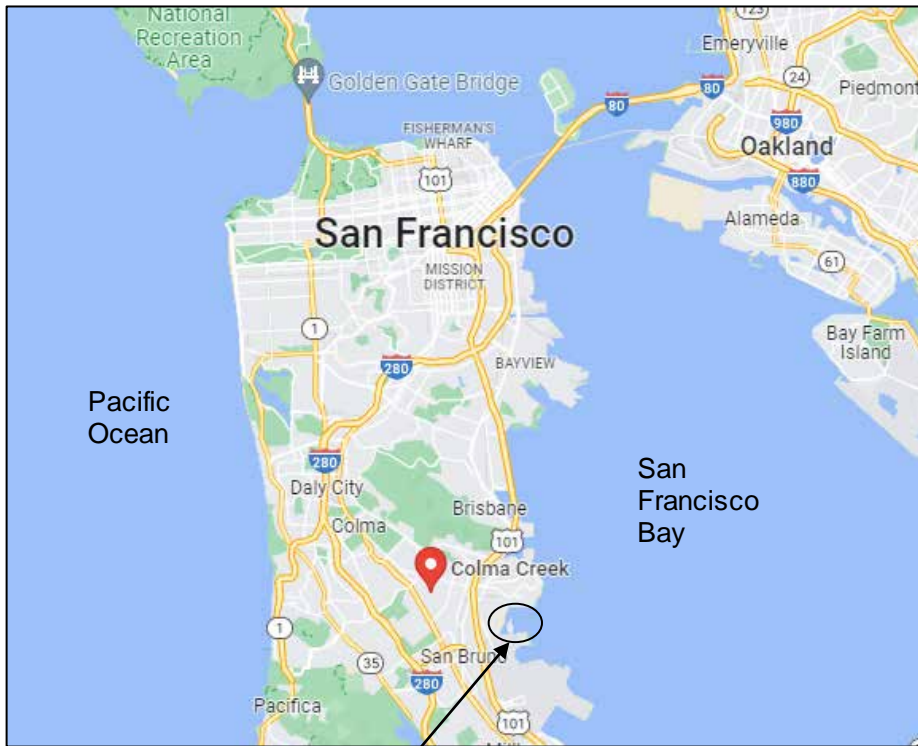
PROJECT OVERVIEW



- NFS City of South San Francisco / SSF WQCP
- CAP Section 103 (Coastal, <\$10 M fed, simple)
 - includes protecting single non-federal public properties and facilities against damages caused by storm driven waves and currents.
- 165,000 full time residents + the daily population of San Francisco International Airport rely on plant.
- The WQCP plant & pump station 4 currently at risk for coastal flooding by storm driven waves
- Flood risk is expected to increase over time due to the location in a low-lying coastal area & SLR
- Coastal storm risk flood events could cause:
 - Ø Damage to critical infrastructure
 - Ø Disrupted wastewater treatment services/pumping
 - Ø Raw sewage backups in homes, businesses, and streets
 - Ø Release of untreated raw sewage into the Bay
- Unpermitted discharges and mixing of contaminated water during flooding events could result in environmental degradation in nearby sensitive habitat



STUDY AREA MAP



South San Francisco Wastewater Quality Control Plant (SSF WQCP)

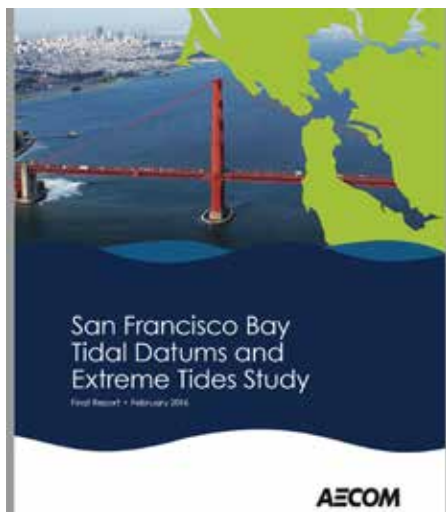
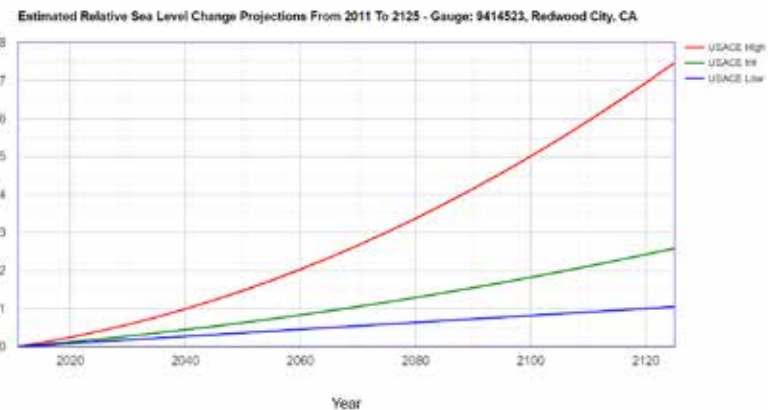




COASTAL WATER LEVELS – SEA LEVEL CHANGE (SLC) AND EXTREME WATER LEVELS (EWL)



- USACE ER1100-2-8162 “Incorporating Sea Level Change in Civil Works Programs”
- Basis for Lower Colma Creek Extreme Water Levels
 - BakerAECOM/FEMA 2016 Tidal Datum & Extreme Water Levels Study
 - Relative SLC Redwood City, CA NOAA tide gauge
 - USACE Sea-Level Change Curves (low, intermediate, high)
 - Max SLR elevation modeled was 14.09 ft NAVD88 in 2073, .2% AEP
 - Extreme water levels will be used as downstream boundary condition
- Water Levels defined for 153 Scenarios
 - 8 return period events; 100% (1-year) through 0.2% (500-year) events
 - 2023(L/I/H), 2033(I/H), 2043(I/H), 2053(I/H), 2063(I/H), 2073(L/I/H)



Location		Coordinates (UTM Zone 10N - Meters)		Tidal Datum						Extreme Tide Elevation							
County	Point ID	Easting	Northing	FEET-NAVD88						FEET-NAVD88							
				MLLW	MLW	MSL	MTL	MHW	MHHW	1-YR	2-YR	5-YR	10-YR	25-YR	50-YR	100-YR	500-YR
San Mateo	800	6028979.051	2044185.347	-0.79	0.40	3.33	3.31	6.22	6.84	8.11	8.44	8.80	9.08	9.51	9.89	10.32	11.58
San Mateo	801	6027067.244	2044253.457	-	-	-	-	6.22	6.84	8.11	8.44	8.80	9.08	9.51	9.88	10.31	11.55
San Mateo	802	6028482.717	2044869.106	-	-	-	-	6.22	6.83	8.11	8.44	8.80	9.08	9.51	9.88	10.31	11.54
San Mateo	803	6025085.036	2045787.542	-	-	-	-	6.21	6.83	8.11	8.44	8.80	9.08	9.51	9.88	10.30	11.52
San Mateo	804	6024014.494	2047064.672	-	-	-	-	6.21	6.83	8.11	8.44	8.80	9.08	9.50	9.87	10.29	11.50
San Mateo	805	6017100.925	2061611.559	-0.71	0.47	3.32	3.31	6.16	6.77	8.07	8.39	8.75	9.03	9.44	9.80	10.20	11.34
San Mateo	806	6015476.256	2061836.330	-	-	-	-	6.15	6.77	8.08	8.39	8.75	9.03	9.44	9.79	10.19	11.32
San Mateo	807	6016020.415	2062888.689	-	-	-	-	6.15	6.77	8.09	8.39	8.75	9.03	9.44	9.78	10.17	11.27
San Mateo	808	6017773.562	2063107.750	-	-	-	-	6.15	6.77	8.08	8.38	8.74	9.03	9.44	9.78	10.19	11.31



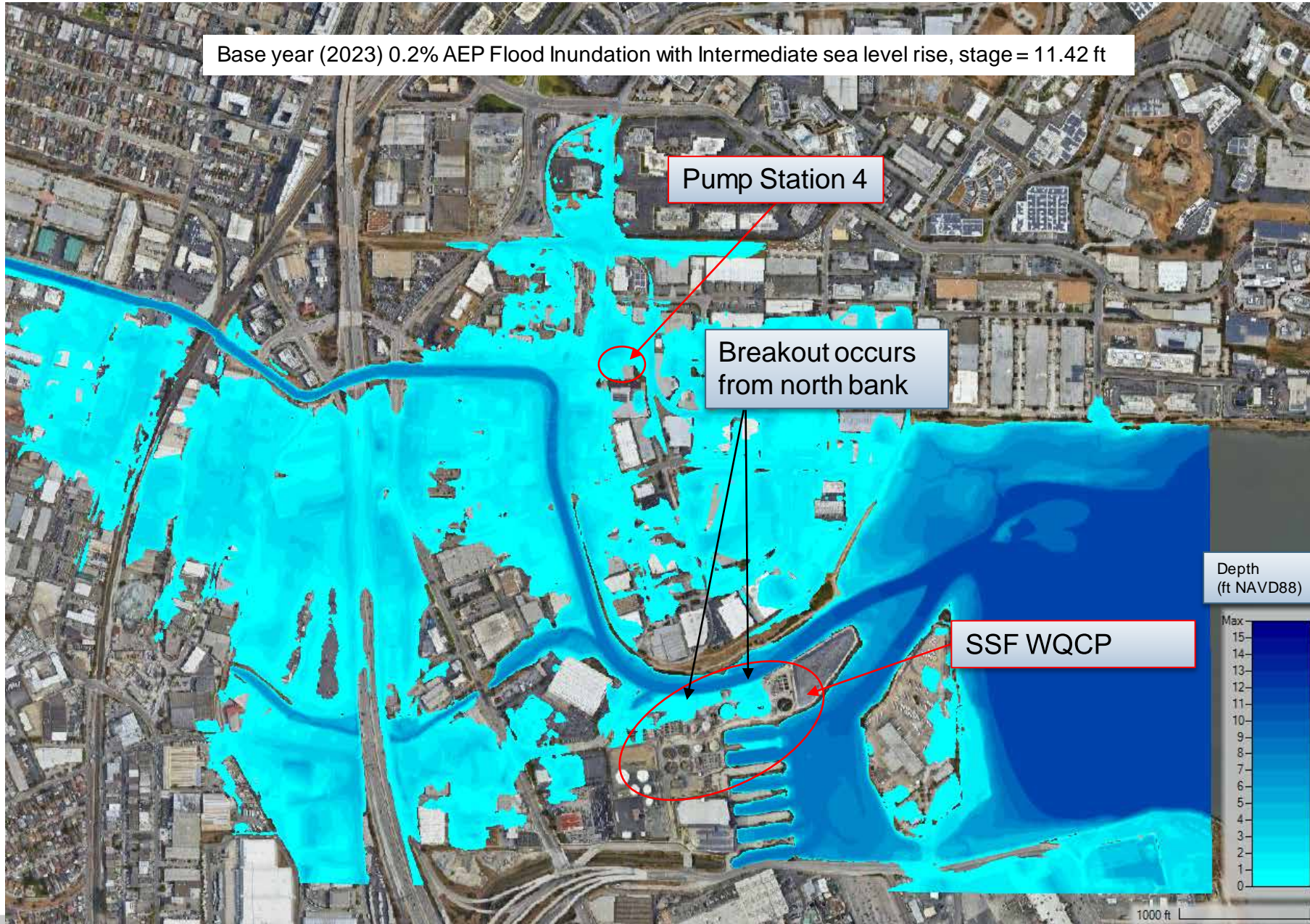


EXISTING FLOOD HAZARD





EXISTING FLOOD HAZARD

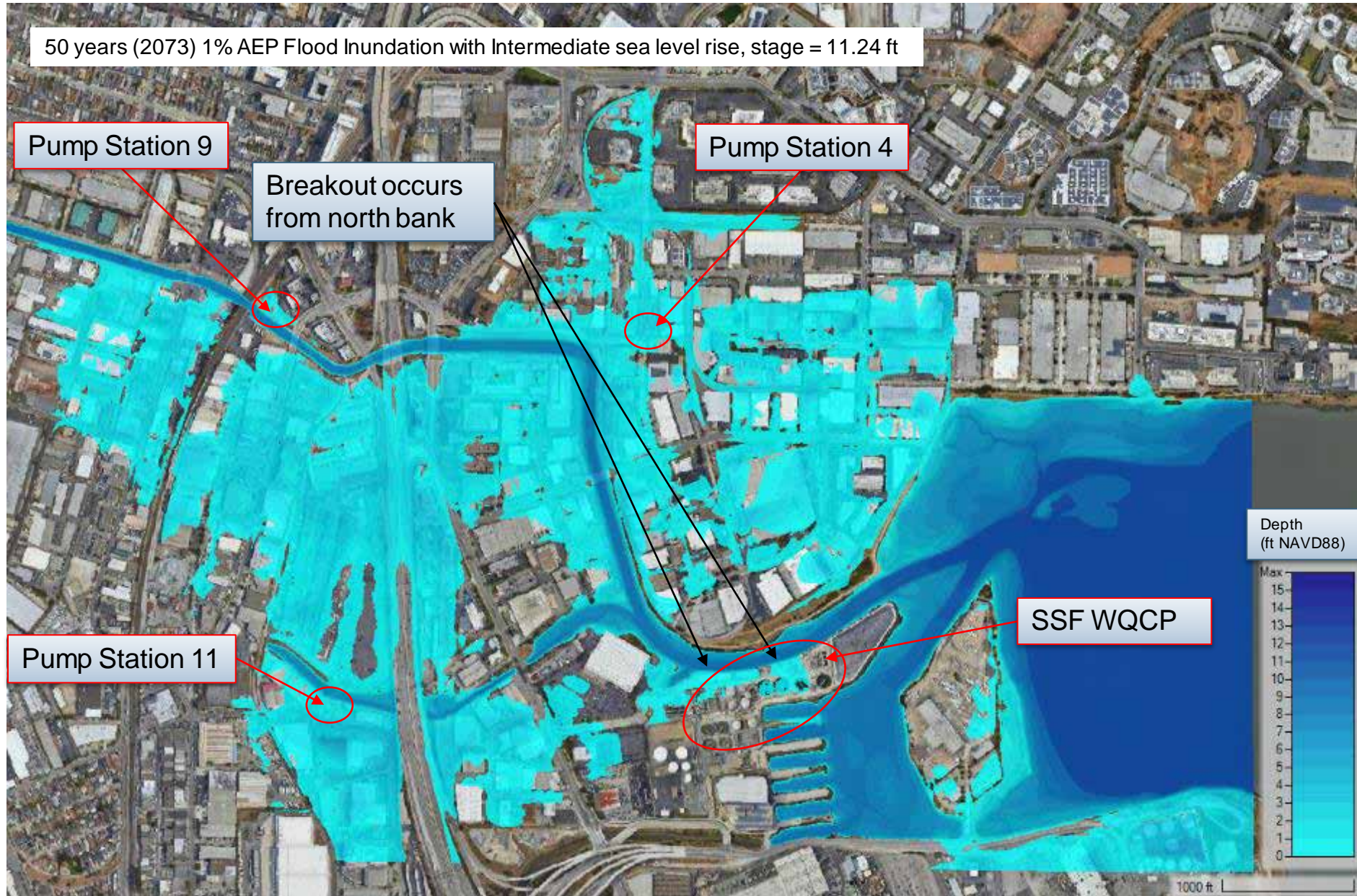




EXISTING FLOOD HAZARD

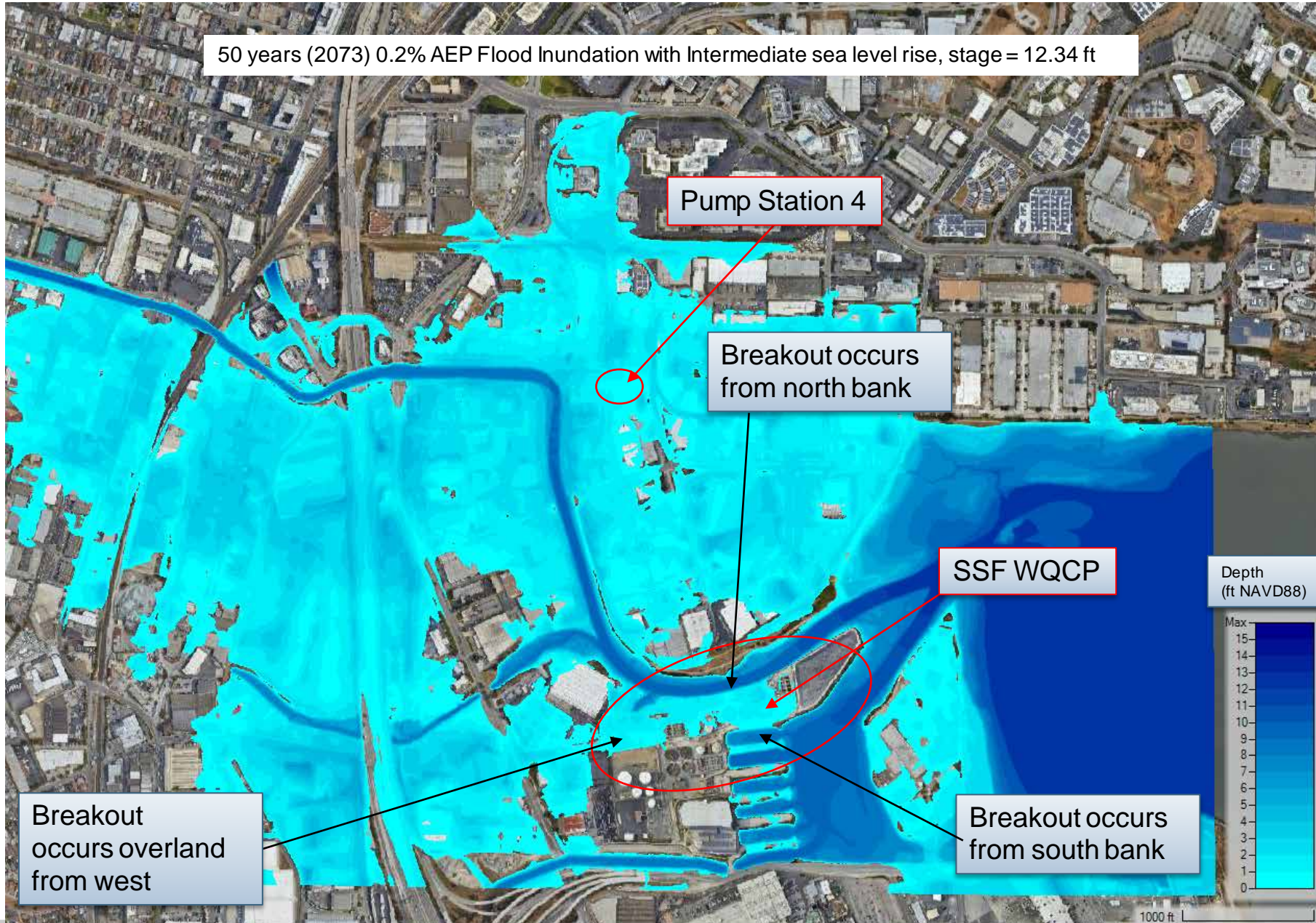


- Presents coastal flood risk to the SSF WQCF.
 - Colma Creek right bank is not expected to contain the 1% annual exceedance probability (AEP) coastal event.
 - This analysis was only for coastal events, does not include Colma Creek.
 - Flooding could be exacerbated by flows in Colma Creek.
- New model uses 2017 San Mateo County LiDAR
- New model uses Extreme Tide Elevations from USACE SLR curves and Redwood tide gauge.
- Water overtops the north bank at 10.47 ft water elevation, at the South bank at 11.74 ft, and overland from the west at 13 ft.





EXISTING FLOOD HAZARD





REGIONAL RESILIENCY / COASTAL FLOOD RISK MITIGATION



There are existing efforts to evaluate more regional coastal storm risk solutions in this area, perhaps with FEMA grant funding for implementation, and SSF is talking to the U.S. Army Corps of Engineers (Corps) about a potential larger study also.

- Ø Corps study team coordinating with stakeholders, such as One Shoreline, and compatibility with potential future efforts was considered in the evaluation
- Ø **The Continuing Authorities Program (CAP), which this study is under is not equipped to address regional coastal flood risk here due to cost and complexity limits of CAP, but can serve to provide targeted, coastal storm risk management at critical infrastructure that can tie in with future efforts**



Current Project List

OneShoreline works throughout the county on projects that protect us from flooding and erosion, enhance our environment, and create recreational opportunities. We have partnerships with many governance structures, including new and previously established efforts involving cities and San Mateo County, and long-standing efforts related to our flood zones that are now the responsibility of the District.

Pictured right are the flood zones that were previously managed separately by jurisdictions. One Shoreline was established in January 2020 to cross jurisdictional boundaries and coordinate flood risk management as one shoreline, regionally, including previously unincorporated coastal zones.





INITIAL SCREENING



Natural and Nature-Based Features (NNBFs) (structural)	Screened	Areas most suitable for NNBFs do not correlate well with where NNBFs would be needed for managing coastal storm risk
Improvements to SF Bay Trail (recreation)	Screened	Routing the trail along the Bay adjacent to the WQCP poses an unacceptable safety /security threat to critical infrastructure. Alternative route identified has a high estimated cost and would not substantially improve recreational experience from the existing experience.
Temporary /deployable flood barriers (structural)	Screened	Not cost effective compared to floodwalls.
Storm surge barrier at the mouth of Colma Creek (structural)	Screened	Exceeds the cost limit of CAP
Ecotone levee combo with floodwall (structural)	Screened	Insufficient space, would fill in the entire creek width in order to provide sufficient flood risk management
CSRM Improvements to Finger Piers (storage and parking area) (structural)	Screened	Insufficient damages to support CSRM measures in this location. Good potential mitigation location if mitigation is required.
Drainage pump system (structural as they would be implemented in combination with tide gates or storm surge barriers)	Screened	Exceeds the cost limit of CAP
Standard Levee (structural)	Screened	Insufficient space
Standard levee/floodwall combo (structural)	Screened	Insufficient space
Dredging Colma Creek (structural)	Screened	Not effective in addressing coastal flood risk / meeting objectives
Relocate entire treatment facility (non-structural)	Screened	Cost (in the billions of dollars) exceeds benefits and CAP cost limit
Relocate structures of concerns (non-structural)	Screened	Infeasible/not cost efficient
Leverage another treatment facility (non-structural)	Screened	Not effective as other nearby treatment facilities are also at risk for coastal flooding
Tide gates (structural)	Screened	Exceeds the cost limit of CAP



INITIAL SCREENING – RETAINED MEASURES



Floodwall (structural)	Retained	There is sufficient space to site a floodwall and cost estimate is within CAP cost limit. Alignment can be pulled back from shoreline as much as possible to avoid impacts to adjacent marsh near bridge on north end of WQCP. Plant operability and performance is high up to design event. Can be made adaptable to sea level rise.
Flood proofing of key structures (non-structural)	Retained	Depths of flooding are shallow and velocities are low, which makes flood proofing a viable potential measure. Cost is competitive compared to other measures. SLR adaptability would be to seal plant more frequently. May impact operability and performance of plant, which needs investigation. Operating during flood conditions could endanger workers at the plant, so a safety assessment is needed.
Flood warning system (non-structural)	Retained	For the non-structural operation, the flood warning system is necessary to ensure flood proofing is sealed and in place, which is operated manually.
Ring Levee (non-structural)	Screened for main WQCP Retained for pump station 4	Insufficient space For pump station 4, there is room for a small retaining wall type concrete floodwall around the perimeter station, with a stop log gate for vehicular access. Cost is well within CAP cost limit.
Raise critical assets in place (non-structural)	Screened for most assets Retained for electrical system only	Infeasible/not cost effective compared with floodproofing It is not feasible to floodproof the entire network of subterranean electrical system, which is particularly hazardous if flooded. Raising electrical only was retained.



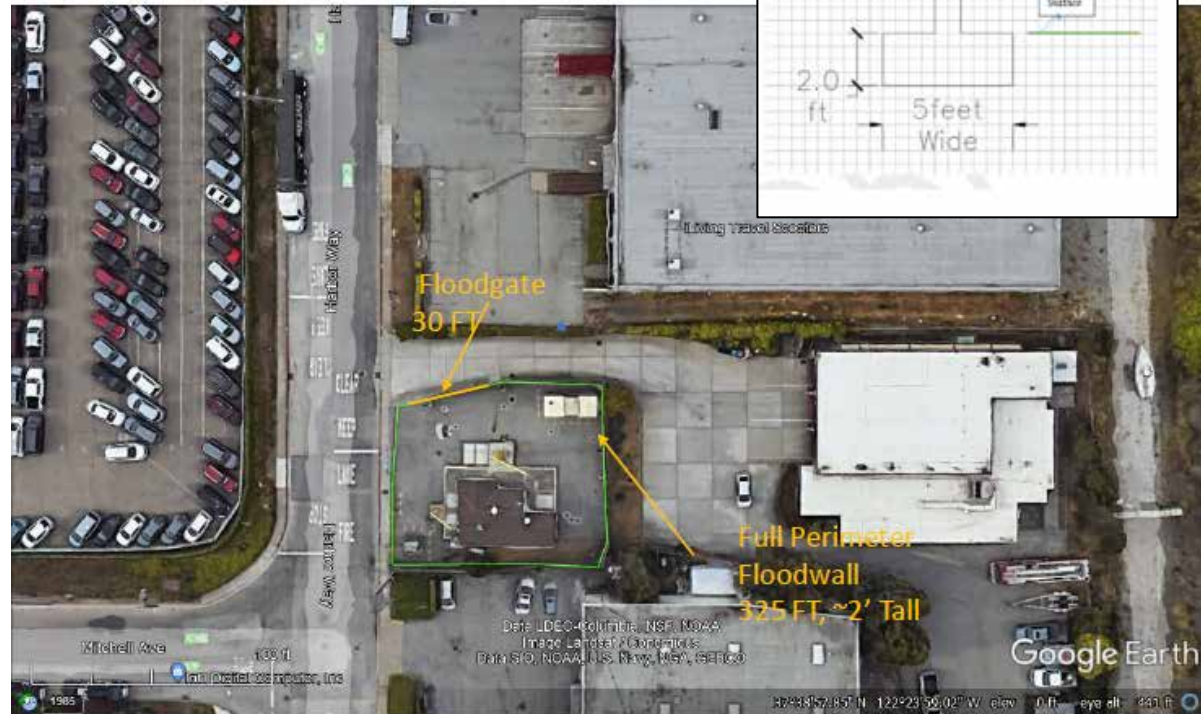
ALTERNATIVE 1

Main WQCP

LOWER COLMA CREEK ALT1 - FLOODWALL 1A & B (N)



Pump Station 4



Alt 1: North floodwall (1BN plus 1AN), shown in left image, plus full perimeter concrete floodwall with stop log gate around pump station 4, and flood warning system, pictured right.



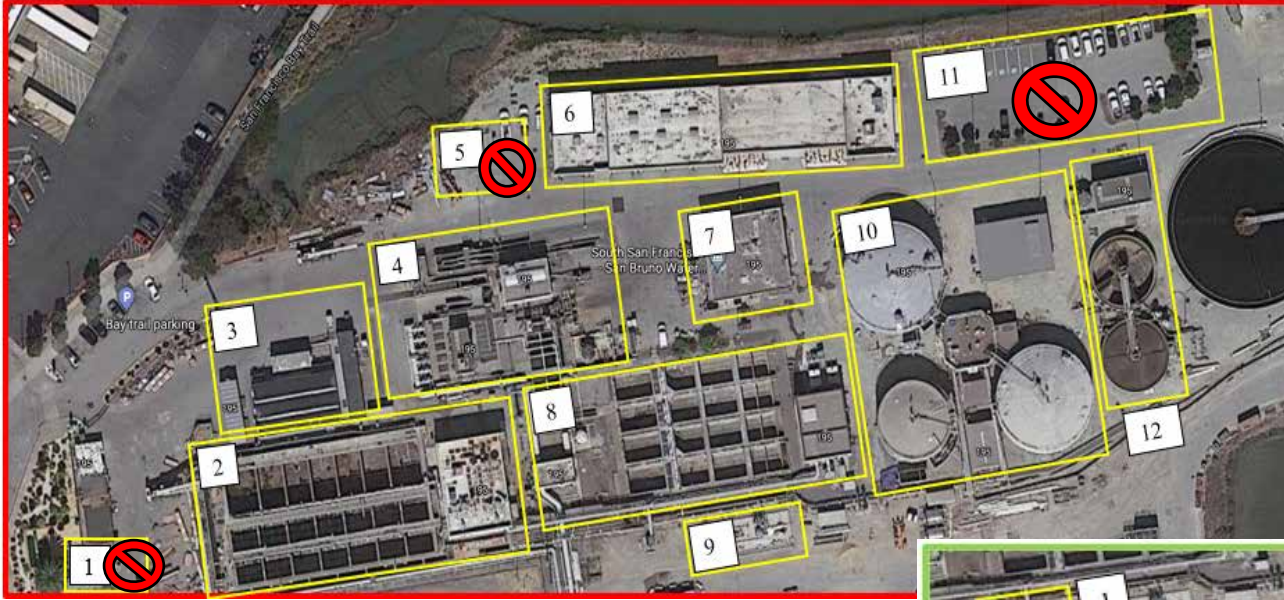
ALTERNATIVE 2



Alt 2: North and south floodwall (1BN + 1AN+2S), plus full perimeter floodwall with stop log gate around pump station 4 and flood warning system

ALTERNATIVE 3: NONSTRUCTURAL

23 Buildings to be floodproofed



Each structure /facility in a yellow box was individually assessed for flood risk based on their structure type, elevation, material, and contents. Structures that do not flood in the without project condition, or do not incur damages, or damages are negligible are marked in red and were excluded.

Total = 23 structures to be floodproofed

This alternative also includes raising the electrical system (next slide) and emergency exits/walkways (not costed/designed)



EVALUATING THE ALTERNATIVES



Qualitative Ranking Categories Green = High Yellow = Med Red = Low	Screening Criteria: Effectiveness <i>Achieves Primary Objective to Manage Coastal Flood Risk</i>			Screening Criteria: Effectiveness	Screening Criteria: Efficiency	Screening Criteria: Completeness	Screening Criteria: Acceptability
	Primary Project Objective #1: Manage risk to human life and safety	Primary Project Objective #2: Reduce Economic Damages from Flooding	Primary Project Objective #3: Reduce damages to env from flooding and effluent releases	Feasible / Constructable (High/Medium/Low)	Cost Effectiveness (\$/Net Benefits)	Benefits Realized Without Further Action From Others (Yes/No)	Legally Implementable (Yes/ Yes, but requires significant coordination / No)
Alternative 1: North Floodwall + Pump Station 4	Green	Green	Green	Green	Yellow	Green	Green
Alternative 2: North & South Floodwall + Pump Station 4	Green	Green	Green	Green	Green	Green	Green
Alternative 3: Nonstructural Only - Raise electrical system + Flood proofing + Pump Station 4	Yellow	Green	Green	Yellow	Red	Green	Green

Team started off by looking at the four planning criteria—

1. Effectiveness
2. efficiency
3. completeness (whether the benefits can be realized without future action from others)
4. acceptability (whether it's legally implementable)

This evaluation informed iterative plan development, including adding electrical raising to the non-structural only plan to make it complete/safe for plant operators.



ECONOMIC DAMAGES



Damages included in this analysis include:

- A structural inventory of structures and contents within the WWTP facility.
- All building characteristics considered in the evaluation, including information on:
 - Ø foundation height,
 - Ø values of building and its contents,
 - Ø depreciation,
 - Ø information about how the plant operates
 - Ø and the number of sewer lateral connections
- The second and largest source of damages are from the clean-up cost associated with a failure to the electrical components to the WWTP and/or to Pump Station #4.
- I.e. back up of raw sewage to some or all of the lateral connections:
 - » City of South San Francisco – Approximately 19,000
 - » City of San Bruno – Approximately 10,586
 - » City of Daly City – Approximately 471
 - » Town of Colma – Approximately 77

<i>With-Project Equivalent Annual Damages & Damages Reduced (Feb 2022 Price Level, Federal Discount Rate - 2.25%)</i>				
	No Action	Alternative #1	Alternative #2	Alternative #3
With-Project Avg Annual Flood Damage	\$774,843	\$248,794	\$0	\$15,184
Annual Damages Reduced	\$0	\$526,049	\$774,843	\$759,658
<i>Project Costs</i>				
Project Cost	\$0	\$9,530,000	\$12,250,000	\$72,041,199
Real Estate Cost	\$0	\$0	\$0	\$0
Environmental Mitigation	\$0	\$705,000	\$705,000	\$0
Total Investment Costs	\$0	\$10,235,000	\$12,955,000	\$72,041,199
Average Annual Costs	\$0	\$343,060	\$434,230	\$2,414,703
Annual O&M Costs	\$0	\$0	\$0	\$0
Total Average Annual Costs	\$0	\$343,060	\$434,230	\$2,414,703
<i>Results</i>				
Annual Net Benefits	--	\$182,989	\$340,612	-\$1,655,044
Benefit-to-Cost Ratio	--	1.53	1.78	0.31

- The Economic Period of Analysis is 50 years and was calculated using the FY 22 Federal Interest rate of 2.25%
- Economic Computations used the Intermediate Sea Level Rise Curve



COMPREHENSIVE BENEFIT COMPARISON



	Screening Criteria #1: Efficiency (\$ cost effective \$)	Screening Criteria #2: Effectiveness (meets primary objectives)	Screening Criteria #3: Acceptable (Implementable)	Screening Criteria #4: Completeness (standalone)	Screening Criteria #5a: Environmental Quality (EQ) habitat	Screening Criteria #5b: Environmental Quality (EQ) Cultural Resources	Screening Criteria #6a: Other Social Effects (OSE), life safety	Screening Criteria #6b: Other Social Effects (OSE), environmental justice	Screening Criteria #6c: Other Social Effects (OSE), impact to people/society of raw sewage exposure	Screening Criteria #7: Operability	Screening Criteria #8: Performance
Final Array of Alternatives	Green = High Yellow = Med Red = Low	Green = High Yellow = Med Red = Low	Green = High Yellow = Med Red = Low	Green = Yes Yellow = Complete for all but the very infrequent flood events where plant workers would leave due to safety and plant would shut down Red = No	Green = High Yellow = Med Red = Low	Green = No impacts to Cultural Resources Yellow = Medium impacts to cultural resources Red = High impacts	Green = manages risk Orange = Unsure/medium Red = Negative Impact	Green = Equitable benefits/damages and avoids impacts to vulnerable Orange = Unsure/medium Red = Negative or Unequitable Impact/Benefits	Green = Equitable benefits/damages and avoids impacts to vulnerable Orange = Unsure/medium Red = Negative or Unequitable Impact/Benefits	Green = High Yellow = Med Red = Low	Green = High Yellow = Med Red = Low
Alternative 1: North Floodwall + Ring Floodwall at Pump Station 4 with gate + flood warning system	Yellow	Green	Green	Green	Yellow	Yellow	Yellow	Yellow	Yellow	Green	Yellow
Alternative 2: North & South Floodwall + Ring Floodwall at Pump Station 4 with gate + flood warning system	Green	Green	Green	Green	Green	Yellow	Green	Green	Green	Green	Green
Alternative 3: Nonstructural Only - Raise electrical system + Flood proofing 23 structures + ring floodwall at Pump Station 4 + Flood warning system	Red	Yellow	Green	Green	Green	Green	Red	Green	Green	Red	Red

- Simple qualitative initial screening
- Developed screening criteria through charettes, research, and team discussions, including with VT
- Used information learned through formulation and analysis to support PDT comparison of each screening criteria
- Maximal Benefit Plan = NED Plan
- No need to perform more quantitative analysis to support TSP selection



AGENCY, TRIBAL, & STAKEHOLDER COORDINATION

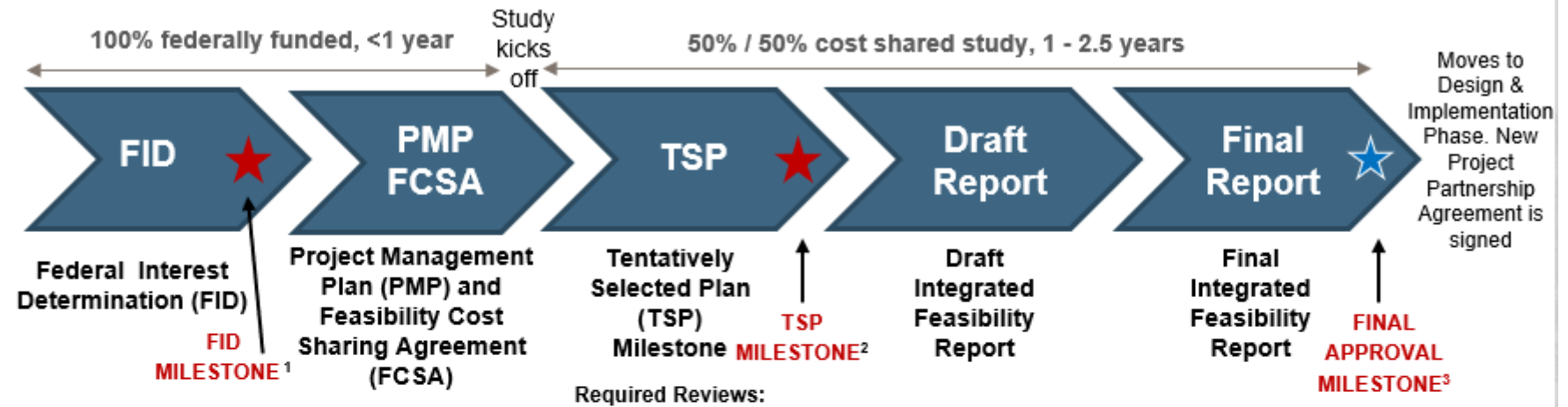


- Site visit on November 4, 2021 with Fish and Wildlife Services
- Resource agency meeting January 10, 2022
- Tribal and historical society letters sent March 8, 2022
- Colma Creek Citizen Advisory Committee presentation March 8, 2022
- Agency specific coordination held March-May 2022
- One Shoreline coordination, ongoing
- Resource agency TSP presentation – coming soon
- Public meeting will be held once Draft Report is released for comment





PATH TO THE FINAL REPORT APPROVAL MILESTONE / SCHEDULE



- Tentatively Selected Milestone - March 31, 2022 (Met)
- Finish Draft Detailed Project Report / Environmental Assessment (DPR/EA) – NLT April 22, 2022 (Met)
- District Quality Control Review - Ongoing
- Release Draft DPR/EA - Early Summer 2022
- Hold interagency coordination & public meeting
- ATR/Public/Policy & Legal Reviews of Draft DPR/EA— Spring/Summer 2022
- Complete Final Report –January 23, 2023
- Final Report Milestone – March 7, 2023



DISCUSSION / QUESTIONS?



BACKUP SLIDES

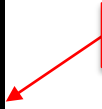


FUTURE SEA LEVEL RISE AND ANNUAL EXCEEDANCE PROBABILITY (AEP) SCENARIOS



All extreme tide elevations scenarios modeled.		Extreme Tide Elevation							
		FEET-NAVD88							
		100% AEP	50% AEP	20% AEP	10% AEP	4% AEP	2% AEP	1% AEP	0.2% AEP
2011	FEMA/AECOM base year	8.09	8.39	8.75	9.03	9.44	9.78	10.17	11.27
2023 (base year)	USACE Low	8.19	8.49	8.85	9.13	9.54	9.88	10.27	11.37
	USACE Int	8.24	8.54	8.9	9.18	9.59	9.93	10.32	11.42
	USACE High	8.41	8.71	9.07	9.35	9.76	10.1	10.49	11.59
2033	USACE Int	8.39	8.69	9.05	9.33	9.74	10.08	10.47	11.57
	USACE High	8.76	9.06	9.42	9.7	10.11	10.45	10.84	11.94
2043	USACE Int	8.56	8.86	9.22	9.5	9.91	10.25	10.64	11.74
	USACE High	9.19	9.49	9.85	10.13	10.54	10.88	11.27	12.37
2048	USACE Low	8.4	8.7	9.06	9.34	9.75	10.09	10.48	11.58
	USACE Int	8.65	8.95	9.31	9.59	10	10.34	10.73	11.83
	USACE High	9.43	9.73	10.09	10.37	10.78	11.12	11.51	12.61
2053	USACE Int	8.74	9.04	9.4	9.68	10.09	10.43	10.82	11.92
	USACE High	9.69	9.99	10.35	10.63	11.04	11.38	11.77	12.87
2063	USACE Int	8.94	9.24	9.6	9.88	10.29	10.63	11.02	12.12
	USACE High	10.26	10.56	10.92	11.2	11.61	11.95	12.34	13.44
2073	USACE Low	8.61	8.91	9.27	9.55	9.96	10.3	10.69	11.79
	USACE Int	9.16	9.46	9.82	10.1	10.51	10.85	11.24	12.34
	USACE High	10.91	11.21	11.57	11.85	12.26	12.6	12.99	14.09

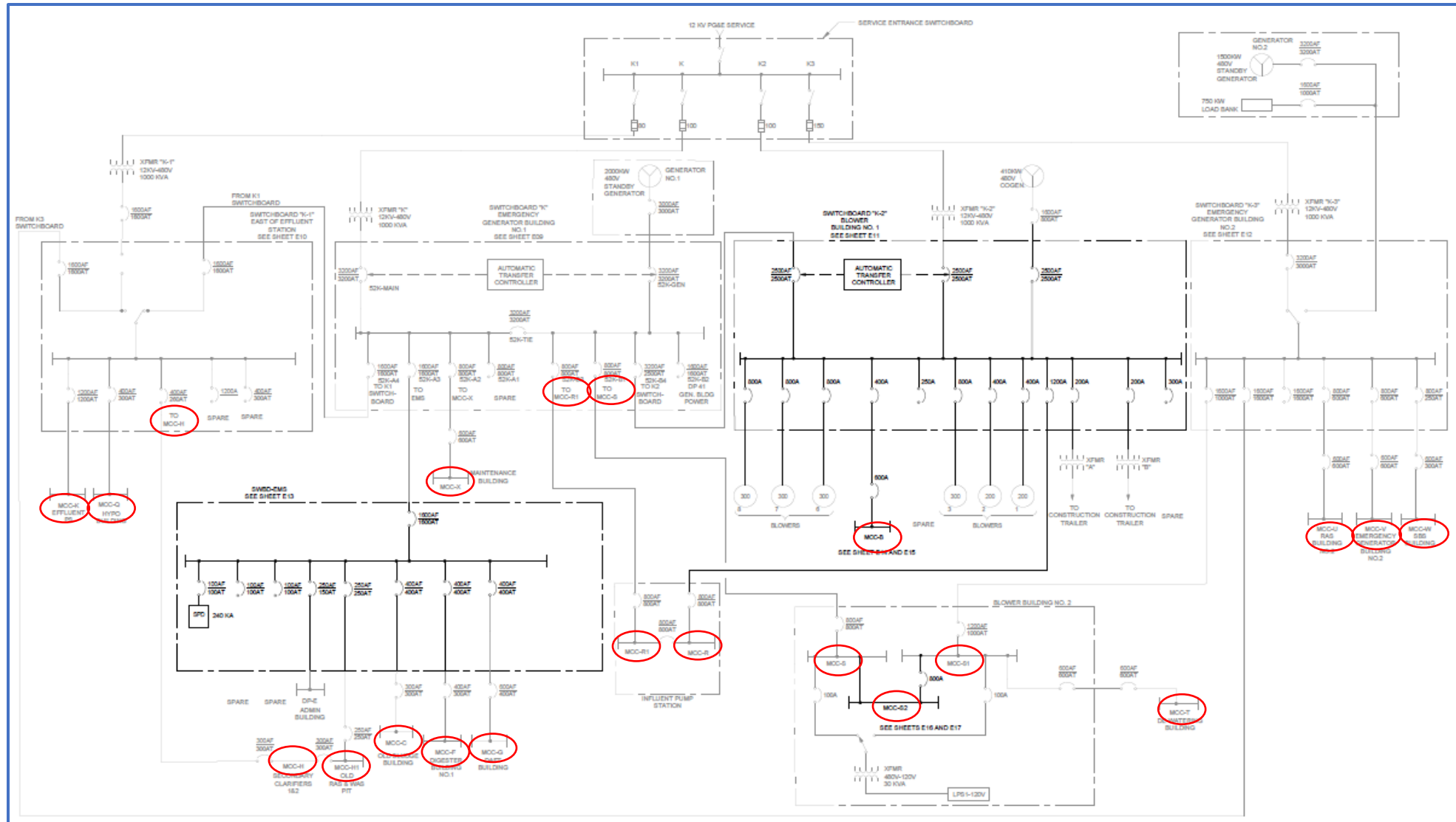
Maximum





ALTERNATIVE 3: NONSTRUCTURAL (CONTINUED)

Electrical Raising– Overall Electrical Single-Line Diagram of the WQCP





PLAN FORMULATION



Problems

For the following problem statements, flood risk is expected to increase in frequency and magnitude as a result of sea level change.

1. **Storm driven waves and currents cause coastal flood risk to the SSF WQCP which risks economic damages** resulting from **damage to infrastructure and contents, plant service shutdown, and cleanup costs from the backup of untreated effluent in homes, businesses, and streets** throughout the service area.
2. Should significant flooding occur at the SSF WQCP or at pump station 4, there is a risk of **service disruption to their roughly 112,000 customers resulting in potential business and household economic losses.**
3. **Public and environmental health is at risk** should coastal flooding cause the need for emergency releases of untreated effluent into Colma Creek and San Francisco Bay.
4. The **coastal flood risk endangers human life and safety of the WQCP workers and operators** should the plant flood.
5. **Human safety is endangered from direct exposure to untreated sewage** backing up in the sewer system and overflowing in toilets and manholes in the service area of the SSF WQCP in the event of a plant shutdown caused by coastal flooding.

Opportunities

1. There is an opportunity to avoid or reduce discharges of untreated effluent into the Bay and avoid water quality degradation and associated impacts to human health and the environment.
2. Opportunities to improve habitat values and the aesthetic and recreational experience in the study area were also investigated.

Constraints

1. The project **cannot compromise the safety and security of the SSF WQCP, which is critical infrastructure for the region.**
2. There is also the universal constraint that the project must comply with applicable federal laws, regulations and policies.

Planning Objectives

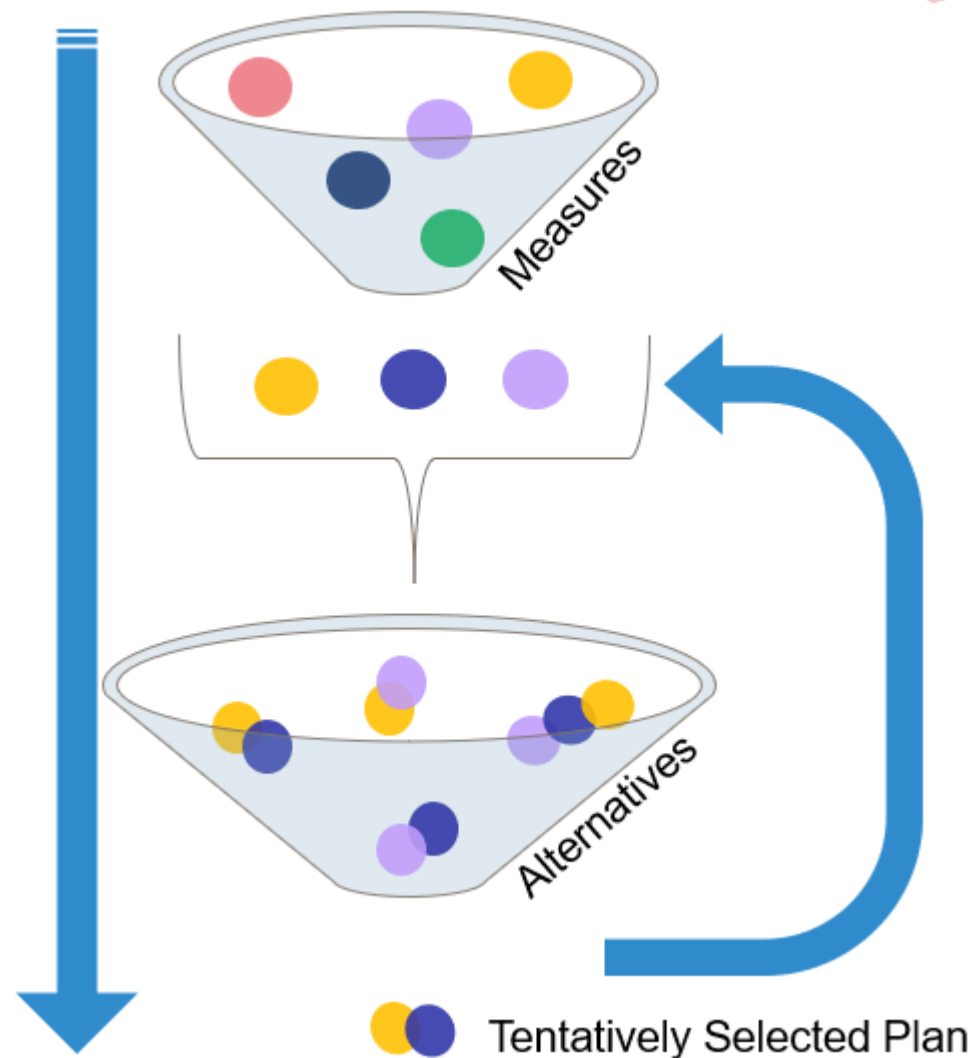
1. Manage the risk of flooding at the SSF WQCP and its pump stations.
2. Manage risk to human life and safety due to flooding at the SSF WQCP and its pump stations.
3. Reduce the economic damages that result from flooding of the WQCP (including pump stations), and the associated potential service disruptions and/or plant shutdowns.
4. Reduce damages to the environment (people and other living things) that result from flooding and the associated releases of untreated effluent into Colma Creek or San Francisco Bay.



FOCUSED ARRAY



Alternative	Formulation Strategy
No Action Plan	No Action
Alt 1: North floodwall (1BN plus 1AN), plus full perimeter concrete floodwall with stop log gate around pump station 4 and flood warning system	Cost Effectiveness
Alt 2: North and south floodwall (1BN + 1AN+2S), plus full perimeter floodwall with stop log gate around pump station 4 and flood warning system	Effectiveness/ Meeting Objectives
Alt 3: Non-structural only. Floodproof 23 structures on main plant, ring floodwall with stop log gate around pump station 4, and flood warning system	Maximize Nonstructural





TRIBAL COORDINATION



Tribes and Section 106 Tribal Consulting Parties

- The Ohlone Indian Tribe (consultation ongoing and occurred early on in April 2021)
- The Amah Mutsun Tribal Band of Mission San Juan Bautista
- The Costanoan Rumsen Carmel Tribe
- Indian Canyon Mutsun Band of Costanoan
- Muwekma Ohlone Indian Tribe of the SF Bay Area
- Rumsen A:ma Tur:ataj Ohlone

Tribal Consultation Summary

- Formal Section 106 tribal consultation letters sent out on **8 Mar 2022**
- Consultation with the Ohlone Indian Tribe by phone on **17 Feb 2022**. Requested subsurface testing to determine presence of CA-SMA-45. Tribal monitors requested for all ground disturbance work
- No other responses from tribes received to date. No tribal attendance during the agency meeting



Tribes fall under these eight Ohlone cultural groups throughout the California Bay Area



ENVIRONMENTAL COMPLIANCE STATUS



Activity	Status
Fish and Wildlife Coordination Act	Draft Coordination Act Report (CAR) received
Clean Water Act Section 404(b)(1)	Draft concurrent with draft report
Clean Water Act Section 401	Draft application to be released with draft report
Coastal Zone Management Act	Draft consistency determination to be released with draft report
Endangered Species Act	Informal consultation to be initiated in early May
National Environmental Policy Act	Draft Integrated Detailed Project Report/ Environmental Assessment (DPR/EA) scheduled for release in May
National Historic Preservation Act (Section 106)	Section 106 initiated with SHPO agreement on Area of Potential Effects (APE), tribal consultation formally initiated

Agenda Item 6 Committee Member Term Renewals

Members of the Colma Creek Advisory Committee			
Member Name/Designation	Appointed By	Member Since	Term Expiration
<i>City/Town Appointed Representatives (Members)</i>			
Helen Fisicaro, Town of Colma Representative	Colma Town Council	April 1, 2002	March 31, 2026
Sue Vaterlaus, City of Pacifica Representative	Pacifica City Council	April 1, 2018	March 31, 2024
Mike Futrell, City of South San Francisco Representative	South San Francisco City Council	July 23, 2014	March 31, 2026
Jovan Grogan, City of San Bruno Representative	San Bruno City Council	April 1, 2020	March 31, 2026
Raymond Buenaventura, City of Daly City Representative	Daly City Council	April 1, 2019	March 31, 2026
<i>Board Appointed Representatives (Members "At Large")</i>			
Gail DeFries, City of Daly City Member At Large	OneShoreline Board of Directors	April 1, 2002	March 31, 2026
Edward Bortoli, City of South San Francisco Member At Large	OneShoreline Board of Directors	December 31, 2014	March 31, 2026
Richard Irli, City of South San Francisco Member At Large	OneShoreline Board of Directors	September 9, 2014	March 31, 2025
Ryan Mayfield, City of South San Francisco Member At Large	OneShoreline Board of Directors	April 1, 2020	March 31, 2024

NEXT MEETING:

Tuesday, June 14, 2022

3:00 p.m.