

1. Roll Call

2. Public Comment Persons wishing to address the Board on District-related matters not on this Agenda may speak for up to two minutes; comments on Agenda items shall be heard during that item for up to two minutes.

3. Action to Set the Agenda and Approve the Consent Agenda

- A. Adopt Resolution 2022-09-26-A to continue conducting meetings of the Board of Directors remotely due to public health concerns caused by the COVID-19 pandemic
- B. Approve the Minutes of the May 23, 2022 and June 27, 2022 District Board meetings
- C. Approve District participation in the Association of California Water Agencies Joint Powers Insurance Authority Commitment to Excellence Program and Risk Control Grant Program
- D. Adopt Resolution 2022-09-26-B regarding Workers Compensation coverage for District volunteers
- E. Adopt an Integrated Pest Management Policy for the District

4. Regular Business

- A. Update on District guidance for planning and development along the San Francisco Bay shoreline
- ~~B. Update on the District's Pillar Point Harbor Shoreline Area Protection and Enhancement Project~~

5. Chair's Report *

6. CEO's Report *

7. Board Member Reports and Items for a Future Agenda *

8. Adjournment

Board of Directors Meeting

San Mateo County Flood and Sea Level Rise Resiliency District

Agenda Item 3C (Consent Item): Approve District participation in the Assn. of CA Water Agencies Joint Powers Insurance Authority Commitment to Excellence Program and Risk Control Grant Program

- **The Association of CA Water Agencies Joint Powers Insurance Authority (“JPIA”) is a risk-sharing pool that offers joint protection programs for participating public water agencies in California.**
- **The JPIA has provided health, vision, and dental insurance to District employees since January 2021, and provided property and liability insurance to the District since July 1, 2022.**
- **The JPIA’s Risk Management Team has assessed the District’s operations and infrastructure and recommends the District participate in the JPIA’s Commitment to Excellence Program that helps its member agencies establish policies and protocols to maximize job safety and reduce the frequency and severity of property loss, and makes the District eligible for the JPIA’s Risk Control Grant Program.**

RECOMMENDATION TO BOARD: Approve District participation in the Association of CA Water Agencies Joint Powers Insurance Authority Commitment to Excellence Program and Risk Control Grant Program, and authorize the Board Chair and CEO to sign the Commitment to Excellence certificate on behalf of the District.

Agenda Item 3D (Consent Item): Adopt Resolution 2022-09-26-B regarding Workers Compensation coverage for District volunteers

- The Association of CA Water Agencies Joint Powers Insurance Authority (“JPIA”) is a risk-sharing pool that offers joint protection programs for participating public water agencies in California. The JPIA has provided health, vision, and dental insurance to District employees since January 2021, and has insured the District through the Liability and Property Joint Protection Program since July 1, 2022.**
- The JPIA requires Liability Program members to adopt a resolution making volunteers subject to Workers’ Compensation Insurance coverage pursuant to the California Labor Code. Volunteers could include student interns, youth and civic groups, individuals assisting in an emergency, or Directors on the District Board.**
- If Resolution 2022-09-26-B is approved, the District’s Workers’ Compensation Insurance through Hartford would be extended to include volunteers, and any claim a volunteer files for a workplace injury or illness would be subject to the no-fault, limited damages provisions of the Workers’ Compensation system.**

RECOMMENDATION TO BOARD: Adopt Resolution 2022-09-26-B extending Workers Compensation coverage to District volunteers.

Agenda Item 3E (Consent Item): Adopt an Integrated Pest Management Policy for the District

- The District is a Permittee to the Regional Water Quality Control Board's adopted Municipal Regional Stormwater Permit, which mandates the adoption and implementation of an Integrated Pest Management Policy ("Policy") to prevent the impairment of urban streams by pesticide-related toxicity.**
- Prior to the District's establishment, Permittees countywide established a coordinated IPM Policy that meets the goals of the Permit's provisions.**
- Since that time, Policy-related activities on District property have been conducted via Board-approved maintenance agreements with either the County or cities of South SF or Colma.**
- RECOMMENDATION TO BOARD: Adopt an Integrated Pest Management Policy for activities on land owned or controlled by the District, which would satisfy our Permit requirements and guide future IPM-related activity on the District's property.**

Agenda Item 4A: District guidance for planning & development along the SF Bay shoreline

Key ingredients to long-term resilience:

1. **Local leadership** eager to use authorities to maximize opportunities for long-term resilience and minimize the need to retrofit later

Cities currently engaged with OneShoreline: San Carlos, San Mateo, South San Francisco



2. A **cross-jurisdictional project** to analyze and guide a regional solution, like OneShoreline's Millbrae and Burlingame Shoreline Area Protection and Enhancement Project



3. Opportunities for new waterfront developments to contribute to site and regional resilience

Currently, developers and agency staff consult with

OneShoreline on projects in Burlingame, San Carlos, South SF, Redwood City, Belmont, and East Palo Alto.



Agenda Item 4A: District guidance for planning & development along the SF Bay shoreline

OneShoreline's work to incorporate climate-driven conditions into planning documents and development reviews is being templated into a draft Guidance Policy that will:

- Be a **standardized, evolving resource** for cities and the County to account for climate-driven flooding, stormwater, groundwater rise, and sea level rise **in planning documents** (General Plan, Specific Plan, Zoning Ordinance) **and approvals** of development and infrastructure projects.
- Include recommendations for:
 - waterfront buffer zones and easements
 - elevation and construction standards for protection infrastructure
 - 1st floor elevations of new developments
 - stormwater capture and drainage infrastructure
 - public trails compliant with regional & ADA requirements
 - disclosures of climate-driven hazards in real estate transactions
 - mechanisms to finance resilience
 - potentially other topics
- Include the need for countywide planning guidance, how to connect planning with regional protection and enhancement, and the guiding principles and objectives of District projects.

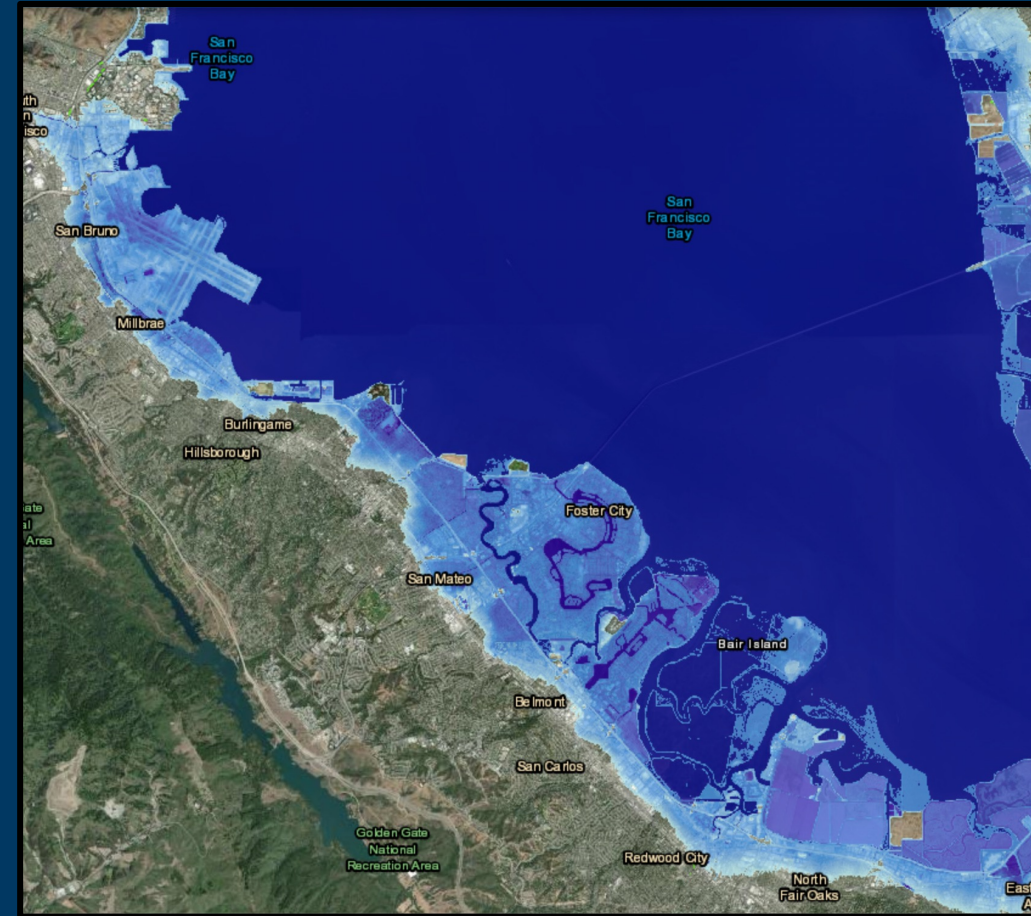
Overview of draft guiding principles and objectives for District Bay shoreline area projects

Regional resilience aligned across jurisdictions, with shared responsibility among key stakeholders, that...

Sustains the viability of key built, ecological, and recreational assets by...

Adapting to long-term future conditions by protecting creeks and shorelines from overtopping when the Bay water level is equal to the FEMA 100-year elevation plus 6 feet (~10 feet above today's high tide) and...

Working with nature rather than against it where feasible, by creating space and natural infrastructure to enable diverse, self-sustaining shoreline habitats that do not require substantial long-term maintenance, costs, and energy.



Agenda Item 6: CEO's Report

- **Millbrae-Burlingame Shoreline Project Highlights**
 - Completed and processed LiDAR flyover (image at right)
 - Completed biological and cultural survey for CEQA
 - Developed wave hazards estimates with SLR to inform alternatives and resilience levels
- **Bayfront Canal**
 - Final electrical inspections with Menlo Park so that PG&E can activate service to the site so that we can complete testing, commissioning, and training.
 - Electrical service also allows us to evaluate impacts of groundwater infiltration into the culverts.
 - OneShoreline is initiating maintenance activities in preparation for this winter.
- Pursuing a FEMA BRIC grant for Bedwell Bayfront Park entrance project construction
- Part-time consultant Dana Clark supports engagement with CBOs and Emergency Action planning





Next Scheduled Board meeting

October 24, 2022