

- 1. Swear In New Board Members *** San Mateo County Supervisor Ray Mueller and San Carlos Mayor Adam Rak
- 2. Roll Call**
- 3. Public Comment** Persons wishing to address the Board on District-related matters not on this Agenda may speak for up to two minutes; comments on Agenda items shall be heard during that item for up to two minutes.
- 4. Action to Set the Agenda and Approve the Consent Agenda**
 - A. Adopt Resolution 2023-01-30 to continue conducting meetings of the Board of Directors remotely due to public health concerns caused by the COVID-19 pandemic
 - B. Authorize the Chief Executive Officer to execute an amendment to OneShoreline's office space lease agreement at 1700 S. El Camino Real in San Mateo to extend that agreement through February 29, 2024
- 5. Regular Business**
 - A. Discuss and take action to elect Board officers; confirm, establish, and appoint members to Board committees; and appoint Board members to outside agencies
 - B. Receive an update on activities by OneShoreline and other jurisdictions during and after the major storms of December 2022 and January 2023
 - C. Receive an update on the activities and agreements related to OneShoreline's Flood Early Warning System
- 6. Chair's Report ***
- 7. CEO's Report *** Planning Guidance Policy update, Leadership Council Community Acceleration Project Team
- 8. Board Member Reports and Items for a Future Agenda ***
- 9. Adjournment**

Board of Directors Meeting

San Mateo County Flood and Sea Level Rise Resiliency District

Agenda Item 5A

Elect Board officers; confirm, establish, and appoint members to Board committees;
and appoint a Board member and alternate to the ACWA JPIA

Current Board positions

Chair: Dave Pine Vice Chair: Debbie Ruddock

Committees (three members expected):

Finance (standing): Donna Colson, Lisa Gauthier, Marie Chuang

Personnel (*ad hoc*): Donna Colson, Marie Chuang, Dave Pine

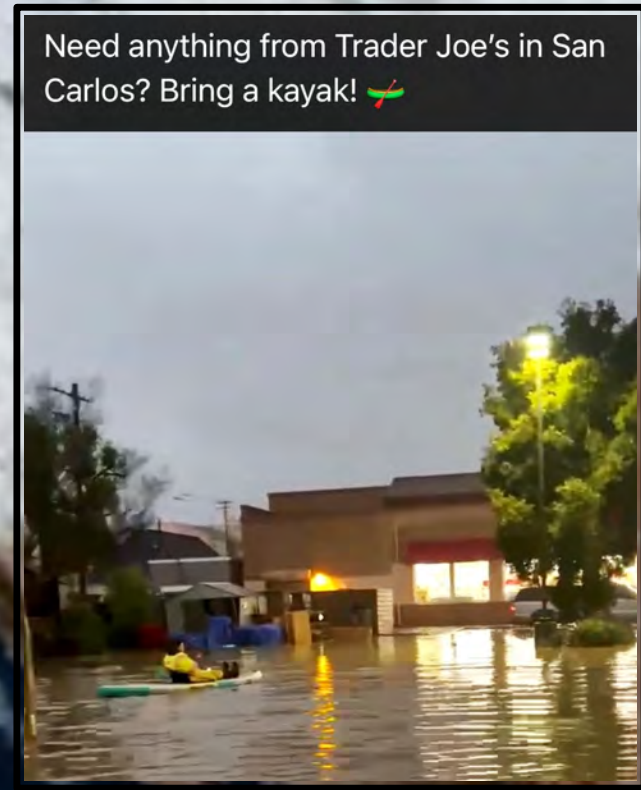
Strategic Planning (*ad hoc*): Dave Pine

Government Affairs (*ad hoc*): Debbie Ruddock, Lisa Gauthier

Representative to the ACWA JPIA: Lisa Gauthier (alternate = Finance Manager Lucy Dong)

Agenda item 5B: The major storms of December 2022 and January 2023

- The pattern of extreme storms that followed extreme drought is extraordinary when viewed through the lens of prior decades
- Scientists expect this pattern to become ordinary as climate change continues
- Storm flooding impacts near the coastline and shoreline are increasingly compounded by sea level rise
- Many storm impacts cross jurisdictional lines



Agenda Item 5B

Activities by OneShoreline and other jurisdictions during and after the major storms of December 2022 and January 2023

OneShoreline activities

- **Belmont Creek Dredging**
- **Bayfront Canal and Atherton Channel Flood Protection**
- **San Bruno Pump Stations**
- **Mapping Flood Impacts**
- **Countywide Flood Early Warning System**

Activities of the cities of San Mateo and Pacifica presented by their Public Works Directors

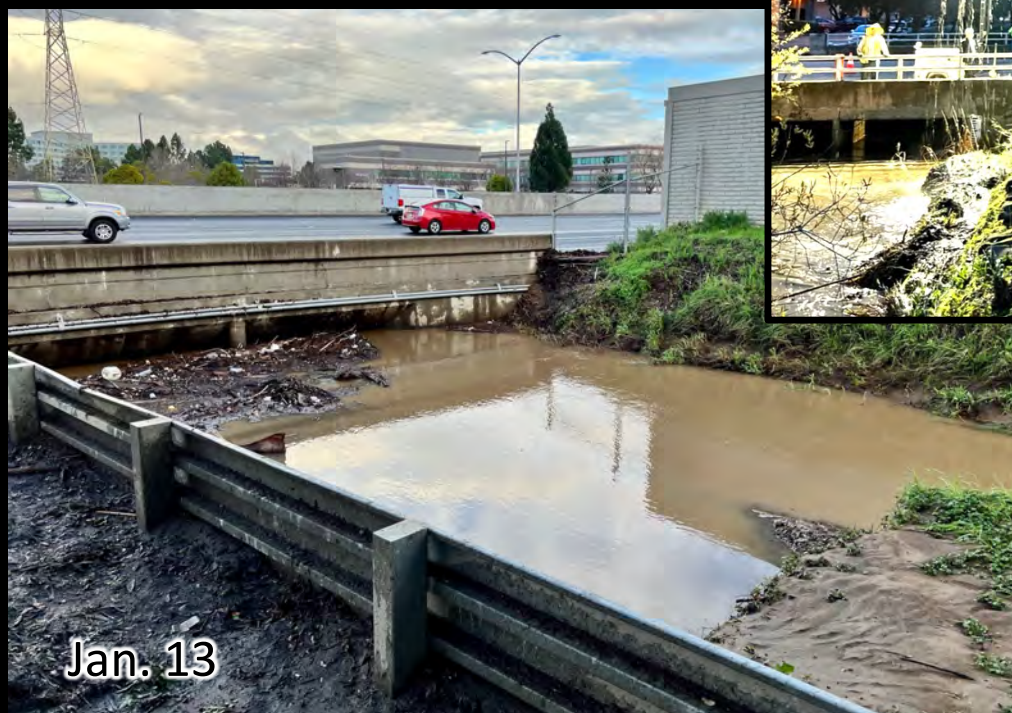
Belmont Creek and the Harbor Industrial Area



Belmont Creek immediately upstream of Highway 101



Belmont Creek immediately upstream of Industrial Road



Bayfront Canal and Atherton Channel

- The December 31, 2022 storm was more intense, and coincident with a higher tide, than the storm of Dec. 2014.
- The mobile home community along the canal saw flooding, but it was less than in 2014 due to OneShoreline's Bayfront Canal and Atherton Channel project completed a year ago.
- The project also allowed flood waters within the community to recede more quickly.
- For the week following that storm, District staff were on-site with Redwood City Public Works to clean debris removed from the channel by the new infrastructure and ensure the structure's effectiveness for subsequent storms.



- Throughout the series of storms, District staff worked closely with staff at the City of San Bruno and County Public Works to monitor and maintain two pump stations owned by the District that drain flow from the flood-prone Belle Air neighborhood.
- The District and City are exploring additional measures in advance of future significant storms.
- OneShoreline is coordinating among many different agencies along San Bruno Creek to scope long-term solutions to the chronic flooding

Walnut St. Pump Station



Mapping Flood Impacts

Flood Reporting throughout San Mateo County

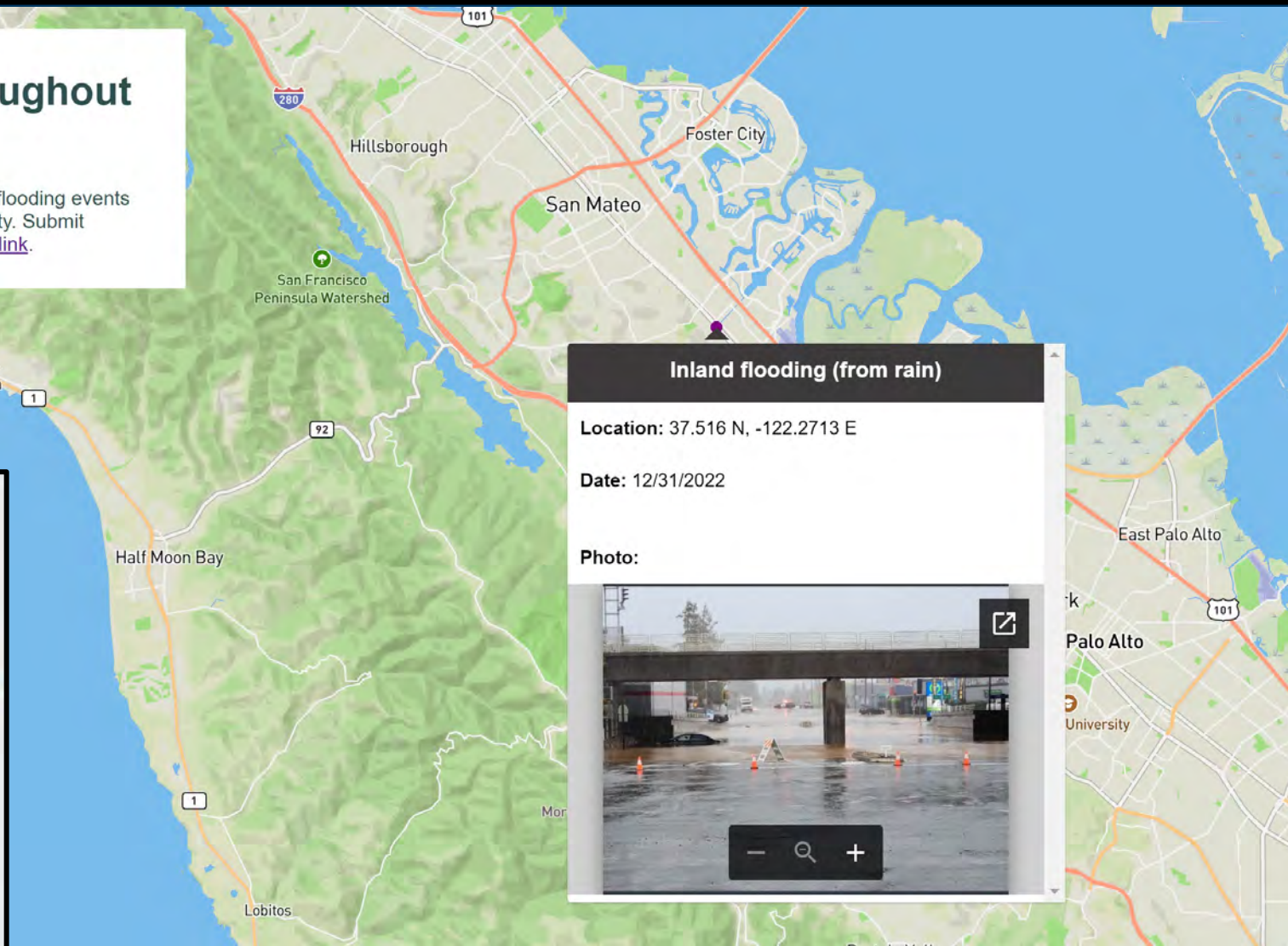
OneShoreline is gathering information about flooding events and related impacts around San Mateo County. Submit information to be included on the map at [this link](#).



Flood Reporting throughout San Mateo County

Thank you for helping us document flooding and flood-related impacts around San Mateo County. **This survey for information gathering only.** This form is not intended to be used for requests to dispatch resources to a site for immediate assistance. The information you provide will play a key role in evaluating current flood risks to develop future flood mitigation efforts.

The **San Mateo County Flood and Sea Level Rise Resiliency District**, also known as **OneShoreline**, is an independent government agency that works across jurisdictional boundaries for the long-term resilience of our region. Information gathered through this form will be added to an online map that you can view [here](#). This map, including photo location information, is publicly available so please do not share photos if you have privacy concerns. Any personal information on survey respondents (name, contact information, etc.) will not be included on the public map.





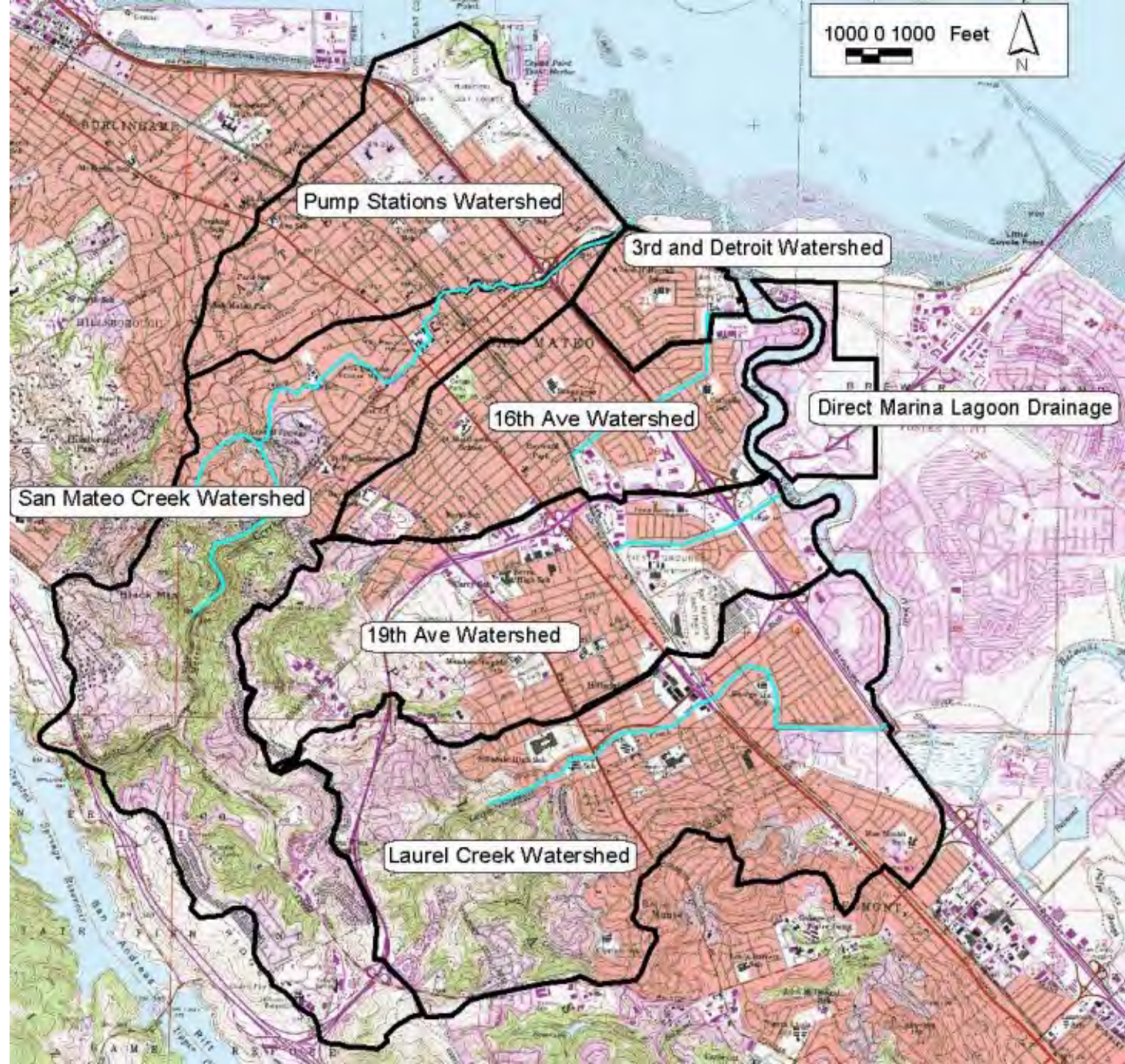
Winter Storms Response

Azalea Mitch, P.E.
Public Works Director

January 30, 2023

City of San Mateo

- Population: 105,000
- Area: 12 sq. mi. land
- Seven major watersheds:
 - North Shoreview District
 - San Mateo Creek
 - East Third Avenue
 - 16th Avenue
 - 19th Avenue
 - Laurel Creek
 - Direct drainage Marina Lagoon
- Marina Lagoon
 - Large storage and pumping facility created from Seal Slough
 - 16th Ave., 19th Ave., Laurel Creek, direct

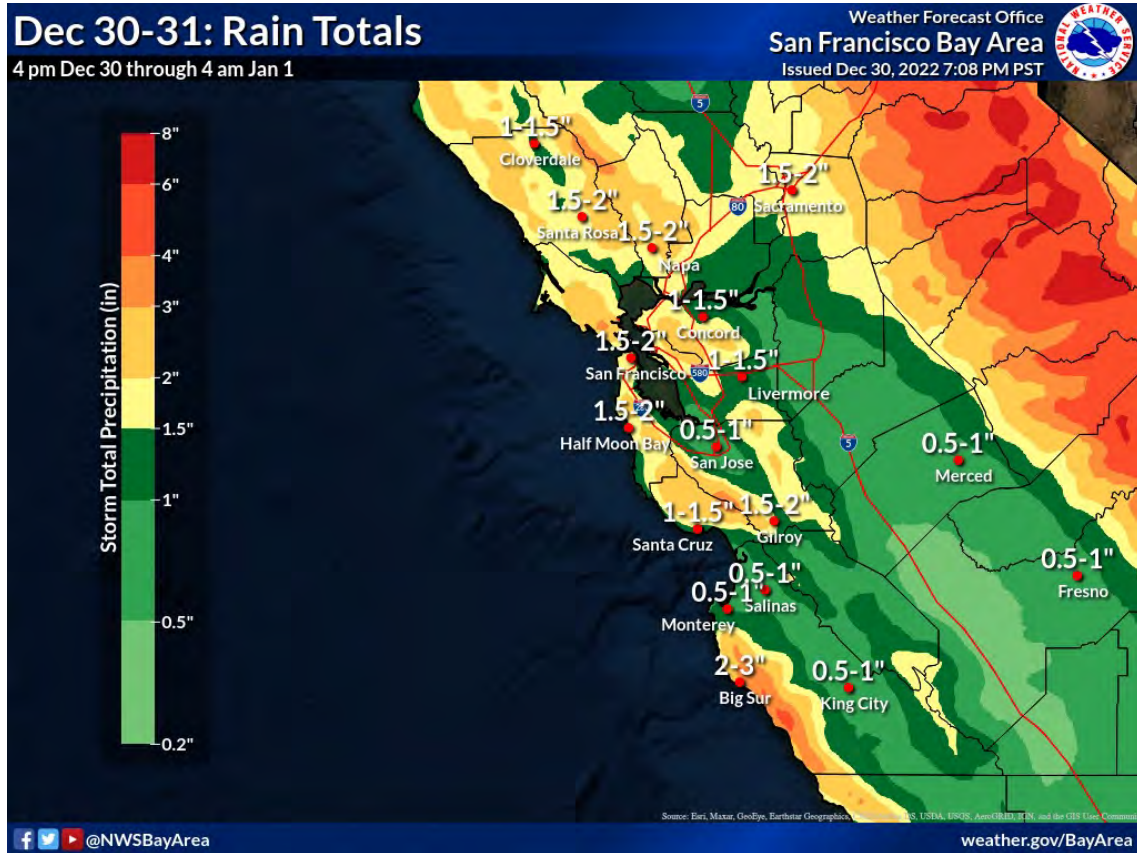


Wet Weather Preparation

- 260 miles of sewers and 130 miles of storm drains
- 27 sanitary sewer pump stations
- 24/7 Wastewater treatment plant
- 10 storm water pump stations
- Clear catch basins and trash racks
- Remove leaves and debris
- 24/7 public sandbag station
- Staff on standby for wet weather events, after-hours



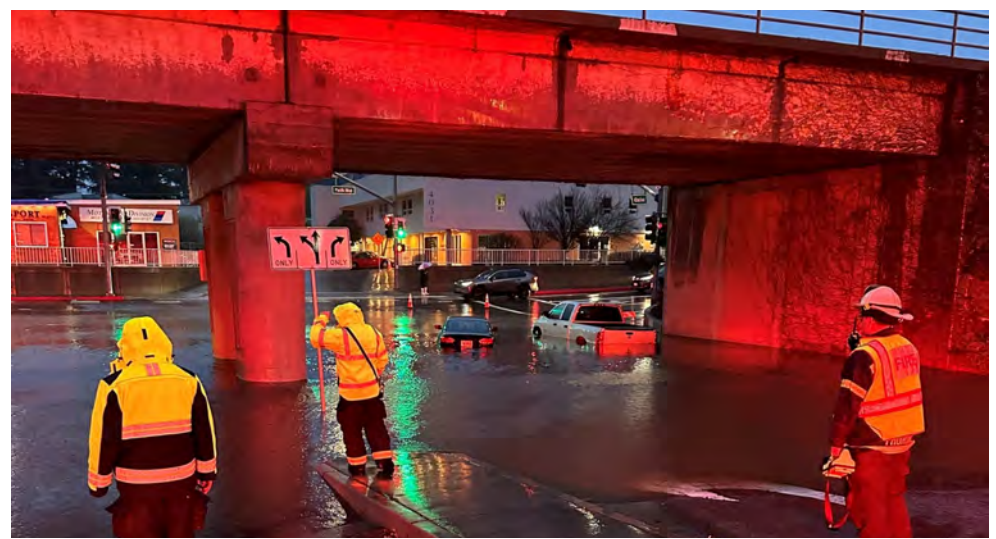
New Year's Eve



The Sunnybrae neighborhood, along with many other locations in San Mateo, flooded during Saturday's storm.

Nick Rose/Daily Journal

What we expected (1 inch) vs. What we saw (4-5 inches)



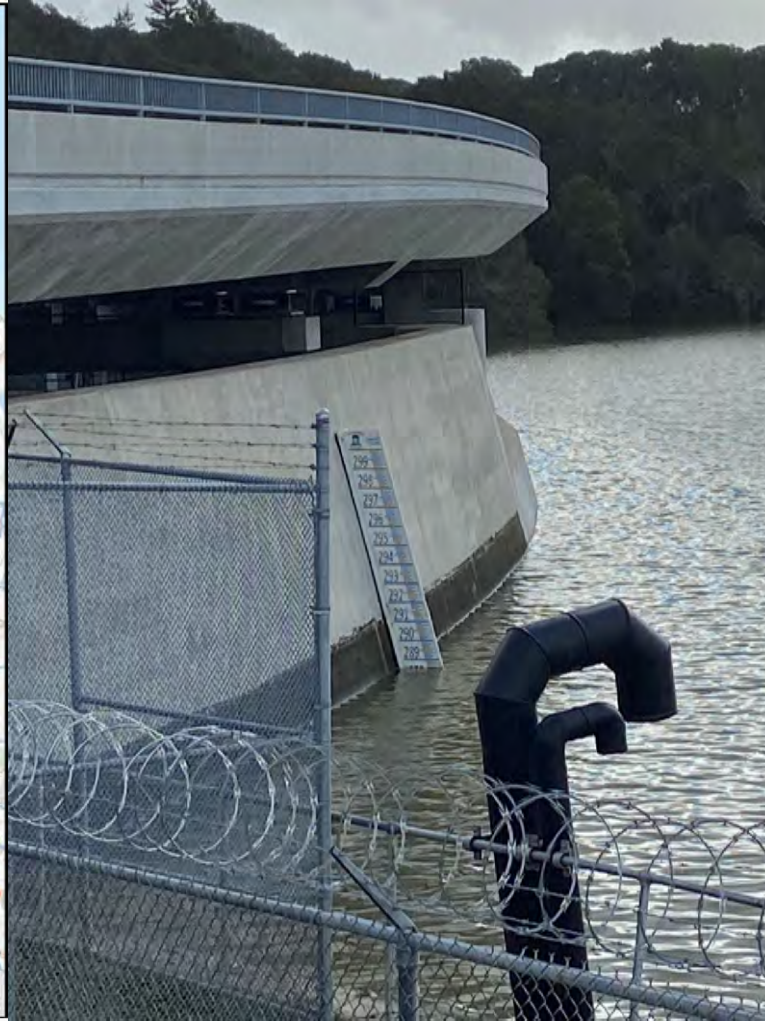
“Bomb cyclone” response

- Opened Emergency Operations Center
- Proclaimed a local emergency
- Prepared to pre-emptively close roads
- Set up City Hall as evacuation site and temporary shelter
- Brought Marina Lagoon levels further down
- Increased staffing at WWTP
- Field crews: 24 hour operation

- 500 tons of sand
- 15,000 bags for sand

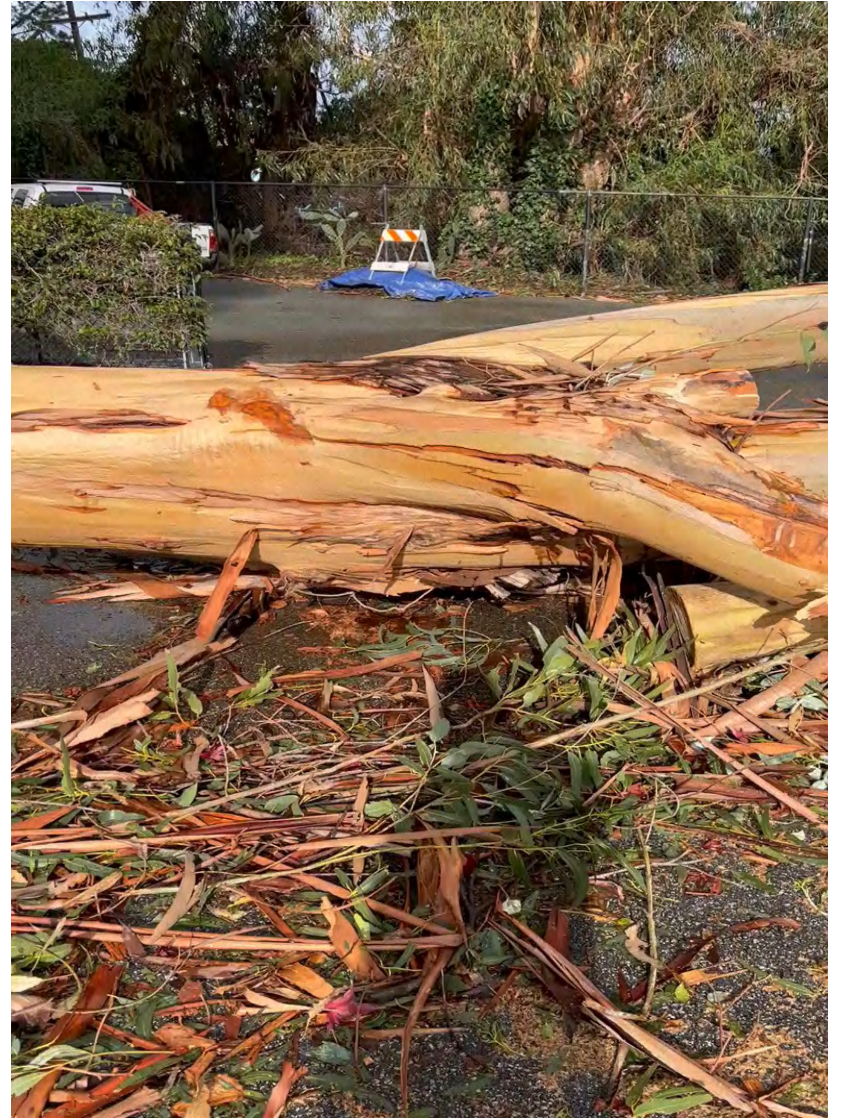


Crystal Springs Reservoir



- Coordination with the San Francisco Public Utilities Commission
- Potential for spillway flow to San Mateo Creek
- Scheduled releases during no rain
- Public outreach











CITY OF SAN MATEO
STORM PREPAREDNESS

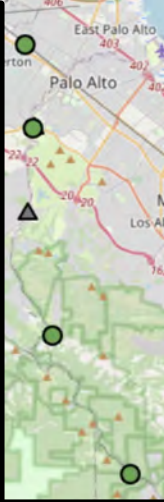
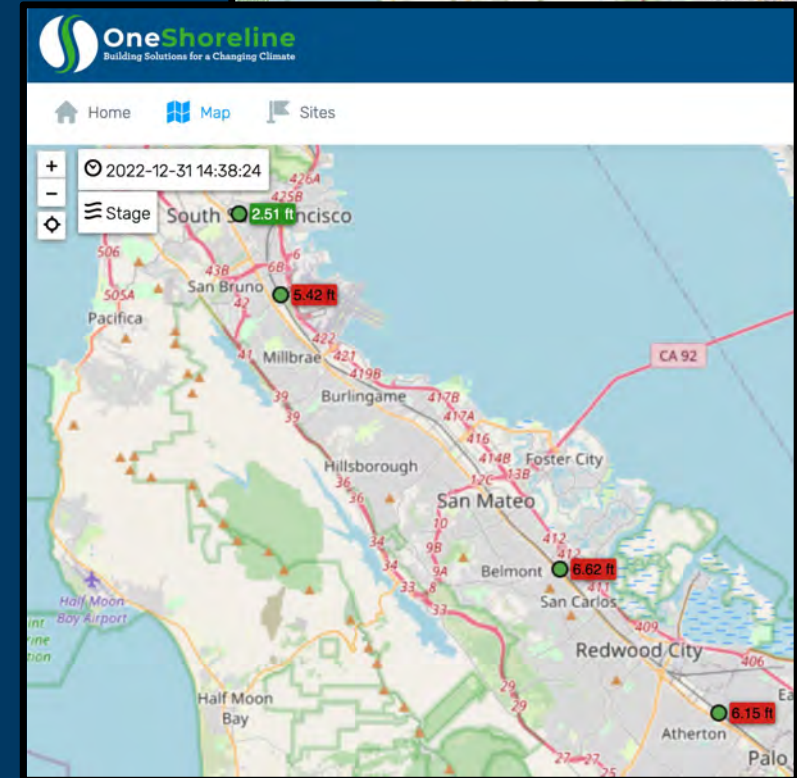
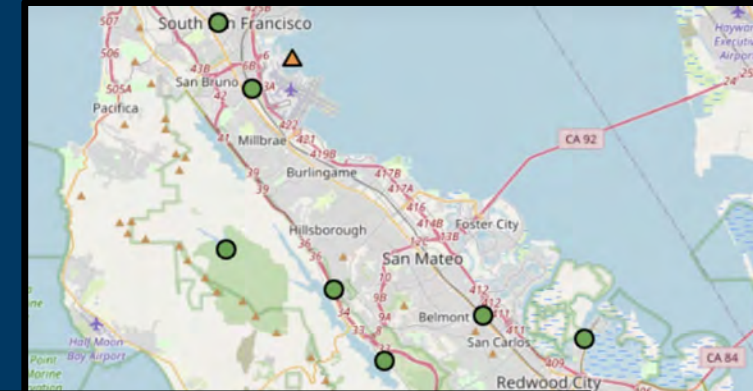


www.cityofsanmateo.org/floodprep



Agenda Item 5C: OneShoreline's Flood Early Warning System

- OneShoreline's Flood Early Warning System monitors stream flows and rainfall (OneShorelineEarlyWarning.onerain.com)
- These stations are constantly maintained, and new stations within the Pescadero and Butano Creek watersheds are coming online this spring in a partnership with the County and RCD
- This informs notifications sent by OneShoreline to emergency responders (and to the public when water levels exceed capacity and substantial rain is forecast in two watersheds)
- On December 31st notifications were sent to cities and the County, and on Jan. 9th an SMC Alert was sent to the Harbor Industrial Area around Belmont Creek
- This year, the District intends to develop Flood Emergency Action Plans for three Bayside watersheds that are prone to flooding – Colma Creek, San Bruno Creek, and Bayfront & Atherton Channel



Agenda item 7: CEO's Report – Planning Guidance Update



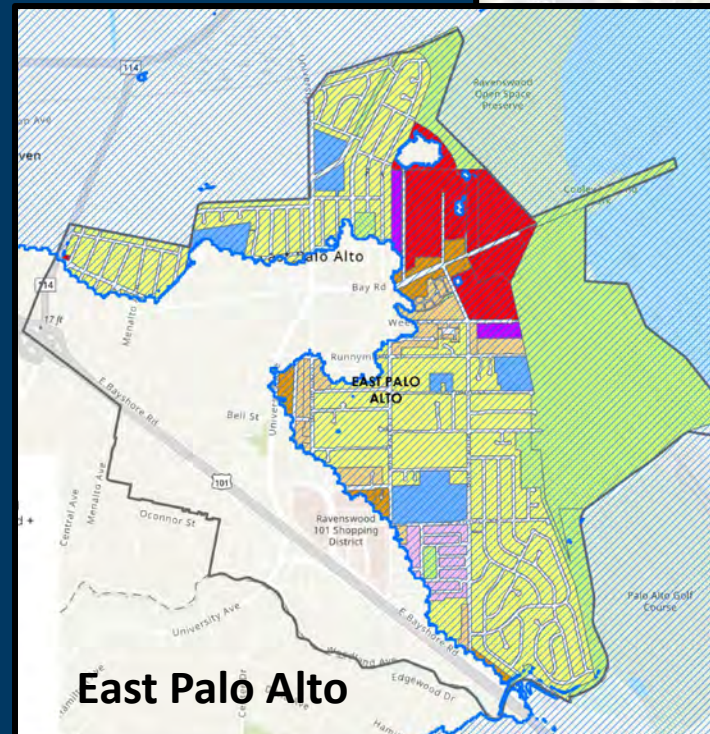
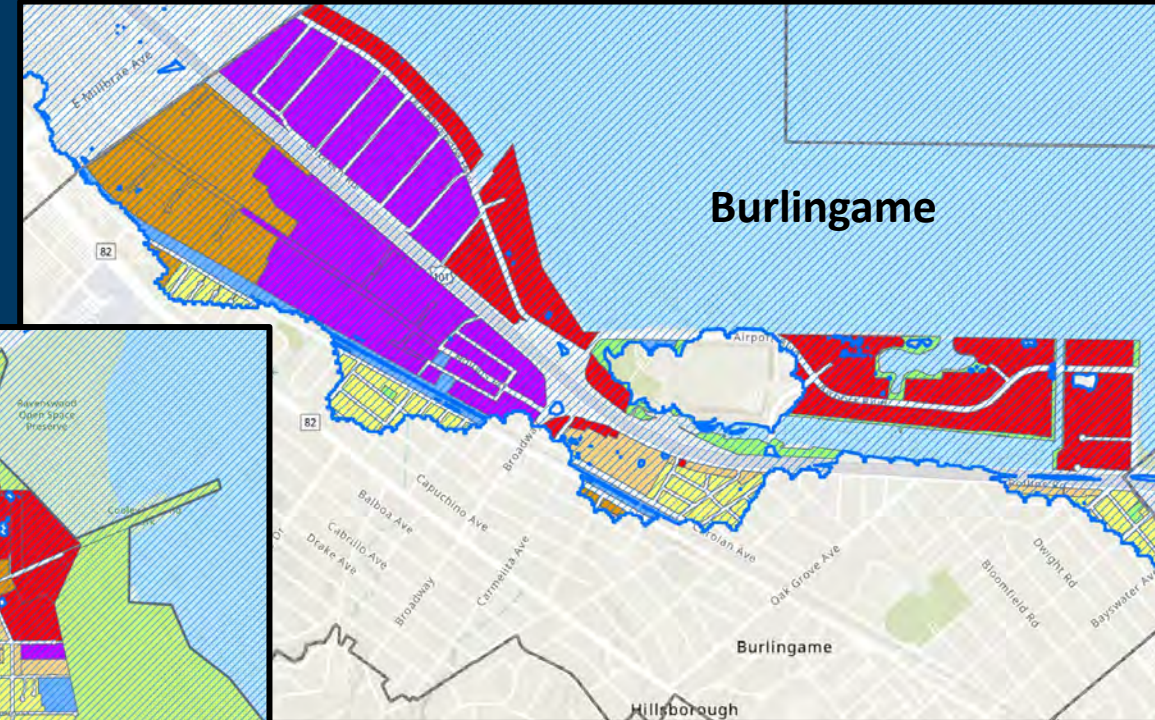
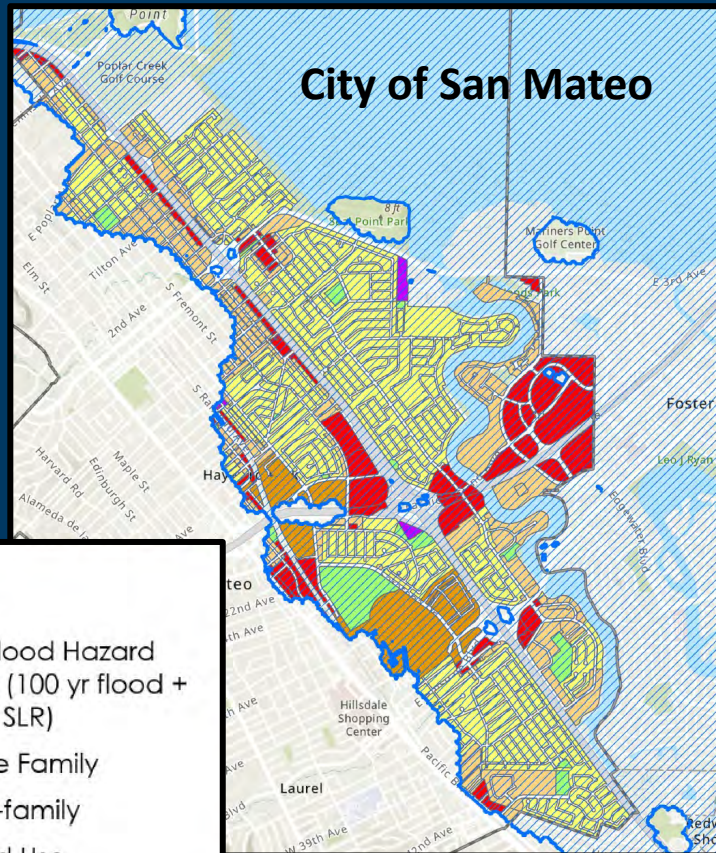
Policy to guide the planning for future conditions

- **Finalizing administrative draft for feedback from staff of all Bayside cities in the county, the County, BCDC, and legal counsel**
- **Incorporate input and, at the March 27 Board Meeting, present a draft and open a public comment period (late March to early May)**
- **Another key source of input: analysis of land use types in the sea level rise floodplain**



CEO's Report: Planning Guidance Update

Land uses vulnerable to sea level rise



Legend

- SLR Flood Hazard
- Area (100 yr flood + 6.6 ft SLR)
- Single Family
- Multi-family
- Mixed Use
- Commercial
- Industrial
- Open Space
- Public Facilities

CEO's Report: Leadership Council Community Acceleration Project Team

- Leadership Council SMC hosts program where a competitively-selected pool of professionals from the business, nonprofit, and government sectors within San Mateo County are placed in Community Acceleration Project (CAP) teams.
- OneShoreline is receiving support from a CAP Team between now and June 2023, focused on building relationships between One Shoreline and CBOs throughout the county.
 - Team members: communications or sustainability staff from Half Moon Bay, City of San Mateo, and the County's Department of Housing and Office of Sustainability
 - Primary task: Hosting an event with CBOs to discuss the impacts of climate change in all sectors of society, find alignment their work and OneShoreline's, and create a toolkit related to advancing this synergy.



Next Scheduled Board meeting

February 27, 2023

4:00 p.m.