

1. Roll Call

2. Public Comment * Persons wishing to address the Board on District-related matters not on this Agenda may speak for up to two minutes; comments on Agenda items shall be heard during that item for up to two minutes.

3. Action to Set the Agenda and Approve the Consent Agenda

A. Approve the Minutes of the January 30, 2023, February 27, 2023, and April 24, 2023 District Board meetings

4. Regular Business

A. Discuss the District's draft *Planning Guidance Policy to Protect and Enhance Bay Shoreline Areas of San Mateo County*, available at OneShoreline.org, review public comments regarding the *Policy* received by the May 19 comment deadline, and receive input on it before it is finalized and considered for approval at the June 26 Board meeting

B. Authorize the CEO to execute a grant agreement with San Mateo County for \$300,000 through June 30, 2025

C. Discuss the Fiscal Year 2022-23 Operating Budget, Flood Zones Budget, and Capital Projects Budget, and the Draft Fiscal Year 2023-24 Operating Budget, Flood Zones Budget, and Capital Projects Budget

5. Chair's Report *

6. CEO's Report *

7. Board Member Reports and Items for a Future Agenda *

8. Adjournment

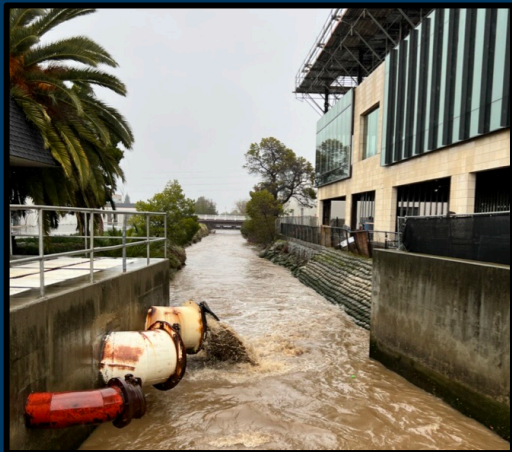
Board of Directors Meeting

San Mateo County Flood and Sea Level Rise Resiliency District

Agenda Item 4A – Planning Guidance Policy to Protect and Enhance Bay Shoreline Areas of San Mateo County

Why develop a Planning Guidance Policy? Why now?

- **The core planning documents of local jurisdictions – a general plan, specific plan, and zoning ordinance – guide where and how development should occur, but do not account for a future of atmospheric rivers and sea level rise.**
- **If that doesn't change, new developments intended to function for decades will not be resilient to future conditions and will need to be retrofitted to protect those and surrounding assets.**
- **This is a pressing issue as there are many proposed Bayside developments.**



The Road to the *Planning Guidance Policy*

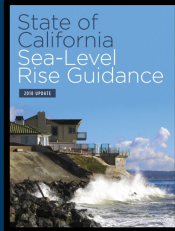
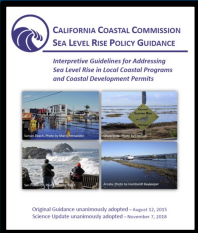
2021

Adaptation Clearinghouse
POWERED BY THE GEORGETOWN CLIMATE CENTER AND USERS LIKE YOU

**Policy Approaches for
Bayfront Resilience in San
Mateo County**

December 6, 2021

**Boston, Broward Co,
Kauai, Norfolk, NYC,
Rhode Island**



2022 & early 2023



OneShoreline
Building Solutions for a Changing Climate

Planning Guidance Policy
To Protect and Enhance
Bay Shoreline Areas of San Mateo County
April 19, 2023 Public Draft

SAN MATEO COUNTY FLOOD AND SEA LEVEL RISE RESILIENCY DISTRICT
OneShoreline.org 1700 S. El Camino Real, Suite 502, San Mateo, CA 94402

[OneShoreline.org/planning-guidance](https://www.oneshoreline.org/planning-guidance)

What is the *Planning Guidance Policy*?

A standardized, evolving resource for jurisdictions to account for climate-driven future conditions in general plans, specific plans, and zoning ordinances, and reviews of new private developments.

It is also intended to be a resource for individuals and organizations that follow land use planning and development in the Bay shoreline area of San Mateo County. And, we hope it can serve as a model for other jurisdictions with similar challenges.

What it is

- Voluntary guidance
- Actionable template
- Focused on new/substantial private development
- Evolving

What it isn't

- Mandatory regulations
- A reference document only
- Focused on existing or public development
- Static



TABLE OF CONTENTS

PREFACE	1
HOW TO USE THIS DOCUMENT	2
ONESHORELINE'S BAY PROTECTION STANDARD	3
Why a Single Protection Standard?	3
Different Adaptation Strategies and The Bay Protection Standard	3
What is OneShoreline's Bay Protection Standard?	4
What is Shoreline Infrastructure?	4
Alignment with State Sea Level Rise Guidance	4
CHAPTER I IMPLEMENTATION AND INTERAGENCY DEVELOPMENT REVIEW	7
IMPLEMENTATION	7
Regulatory Context	7
Climate Adaptation Planning Tools	8
Technical Assistance	9
OneShoreline's Role in Local Development Review	9
CHAPTER II TEMPLATE LANGUAGE FOR GENERAL PLAN AND SPECIFIC PLANS	11
SAFETY OR LAND USE ELEMENTS	11
Community Resilience	11
SAFETY ELEMENT	13
Community Resilience	13
Emergency Readiness and Emergency Operations	18
PUBLIC ACCESS, RECREATION, AND CONNECTIVITY	19
ENVIRONMENTAL JUSTICE AND EQUITY	20
CHAPTER III TEMPLATE LANGUAGE FOR ZONING AMENDMENTS	22
SEA LEVEL RISE OVERLAY DISTRICT	23
XX.XX.010 Definitions	23
XX.XX.020 Purpose and Intent	24
XX.XX.030 Applicability	25
XX.XX.040 Land Use Regulations and Allowable Uses	27
XX.XX.050 Development Standards	27
XX.XX.060 Performance Standards	34
XX.XX.070 Additional Findings	34
SHALLOW GROUNDWATER RISE OVERLAY DISTRICT	35
XX.XX.010 Definitions	35
XX.XX.020 Purpose and Intent	35
XX.XX.030 Applicability	36
XX.XX.040 Development Standards	38
XX.XX.050 Performance Standards	40
CHAPTER IV PROJECT REVIEW CHECKLIST	41
CHAPTER V STANDARD CONDITIONS OF APPROVAL	42
GENERAL	42
PRIOR TO GRADING PERMIT ISSUANCE	43
PRIOR TO BUILDING PERMIT ISSUANCE	43
PRIOR TO CERTIFICATE OF OCCUPANCY	44
GLOSSARY	45
ENDNOTES	46

How to use the *Planning Guidance Policy* and description of the Bay Protection Standard: new FEMA-accredited shoreline protection infrastructure 6' above FEMA's BFE

Implementation: OneShoreline's proposed role in technical assistance and local development review

Template language for General/Specific Plans

Template language for Zoning Ordinances:

- Buffer Zones along the Bay and creeks
- Shoreline protection infrastructure
- Elevating development
- Stormwater capture and drainage
- Shallow groundwater rise
- Applicability and exceptions

Template language for approving development projects, including a requirement to build protection infrastructure to the Bay Protection Standard *or* to provide space and land rights for a city or OneShoreline to build it later

A new interactive online map to accompany the *Planning Guidance Policy*

OneShoreline Bayside Map of Future Conditions

The map interface includes a legend on the left with three items: 'OneShoreline's Bay Protection Standard' (green arrow), 'Sea Level Rise Overlay District' (yellow arrow), and 'Shallow Groundwater Rise Overlay District' (orange arrow). The map shows a coastal area with roads like Sunnydale Ave, Bayshore Blvd, and Brisbane Lagoon. A QR code is located at the bottom left of the map area.

Sea Level Rise Overlay District layer illustrates the area impacted by SLR subject to relevant zoning requirements.

Shallow Groundwater Rise Overlay District layer illustrates the area impacted by this issue subject to relevant zoning requirements.

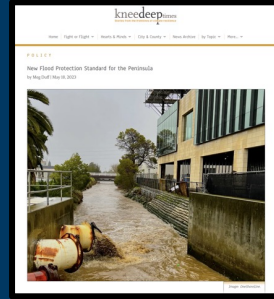
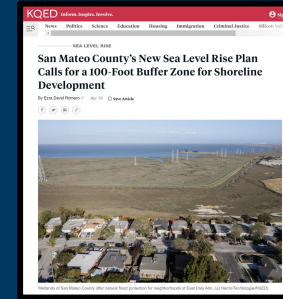
Bay Protection Standard layer is OneShoreline's numeric objective for water level protection at a specific location.

Shallow groundwater rise layer in the Foster City area



Planning Guidance Policy timeline

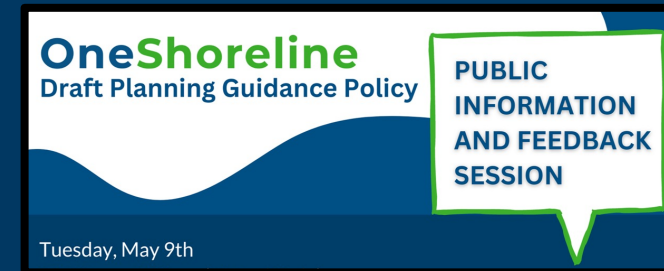
➤ April 19 – public release of Draft Policy



[OneShoreline.org/news](https://www.1shoreline.org/news)

➤ April 24 Board meeting – overview presentation and discussion

➤ May 9 – Public Information & Feedback Session



➤ May 19 – Public Comment period ended

➤ May 22 Board meeting – provide an overview of comments received over public comment period and solicit any additional input

➤ June 26 Board meeting – bring the final draft *Policy* to the Board for consideration of approval

Agenda Item 4A – Comments received on the *Planning Guidance Policy*

- Document development included a review of existing policies for Bay shoreline jurisdictions, a 2023 groundwater study by SFEI, and related documents around the U.S., including Boston’s Coastal Flood Resilience Overlay District, Burlingame’s Zoning Ordinance SLR chapter, South San Francisco Floodplain/Sea Level Rise Overlay District
- Policy’s Public Draft incorporated over 300 comments received from 10 Shoreline cities, San Mateo County, BCDC, C/CAG, the San Francisco Estuary Institute, and two consulting firms as technical reviewers
- During Public Comment period, OneShoreline received comments from 20 organizations or individuals.
- Key themes from these comments include:
 - Questions on how OneShoreline defines the shoreline, particularly as it relates to the Map of Future Conditions
 - Interest in adding local circumstances / nuance to OneShoreline’s Bay Protection Standard
 - Interest in OneShoreline's support and technical assistance in development reviews
 - Praise for OneShoreline and the document
- This feedback and input from the public and the Board at today’s meeting will be incorporated into a final draft of the Planning Guidance Policy and brought to the Board for approval at its June 26, 2023 meeting.

Agenda Item 4B

Authorize the CEO to execute a grant agreement with San Mateo County for \$300,000 through June 30, 2025

On May 9, 2023, the County Board of Supervisors approved an agreement to provide OneShoreline \$300,000 in Measure K funds through 6/30/25 for three efforts listed in a table of required performance measures:

<u>Performance Measure</u>	<u>Target</u>
Preparation, publication, and distribution of San Mateo County Flood and Sea Level Rise Resiliency District (OneShoreline) Planning Guidance Policy following approval of policy by its Board of Directors, by October 2023	Complete
Installation of at least two additional stream/creek gauges (flood early warning system) by June 2025	Complete
Application for and securing of a 5-year maintenance permit for flood prevention debris removal in at least three flood-prone Bayside creeks through June 2025	Complete

Agenda item 4C

OPERATING BUDGET: Estimated Multi-Year Reserves Balance

	FY2022-23	We are here	FY2023-24	FY2024-25	FY2025-26	FY2026-27
	7/22	7/1/23	7/1/24	7/1/25	7/1/26	7/1/27
Income:						
SMC + Cities	\$0		\$0	\$0	\$0	\$0
SMC Meas. K	\$900,000		\$2,050,000 *	\$0	\$0	\$0
SMC Emerg. Declar.			\$41,605			
Other Income **	\$1,000,590		\$1,205,200	\$1,040,000	\$739,529	\$0
	\$1,900,590		\$3,296,805	\$1,040,000	\$739,529	\$0
Expenditures:						
Operating Expenses	\$1,332,767		\$1,860,052	\$1,953,054	\$2,050,707	\$2,255,778
	\$1,332,767		\$1,860,052	\$1,953,054	\$2,050,707	\$2,255,778
Reserves	\$3,144,234		\$4,580,987	\$3,667,932	\$2,356,754	\$100,976

* \$1.75M County Measure K Grant subject to approval by the County BOS in June 2023

** State grants and investment income

After FY23-24, 5% annual increase in expenses assumed

Currently known revenue is expected to run out approximately 7/1/26; reserves run out approximately 7/1/27

OPERATING BUDGET: FY22-23 Approved and Estimated Year-End, and FY23-24 Draft

Budget item	Approved FY2022-23	Estimated Year-End FY2022-23	DRAFT FY2023-24
Revenue	\$2,100,260	\$1,900,590	\$3,296,805
Expenses – Net Personnel	\$975,402	\$742,693	\$954,969
Expenses – Net Operations & Support	\$659,042	\$590,075	\$926,680
Total Expenses	\$1,634,444	\$1,332,767	\$1,860,052
End of FY Balance i.e. Reserves	\$3,310,671	\$3,144,234	\$4,580,987

FLOOD ZONES BUDGET: FY22-23 Approved and Estimated Year-End, and FY23-24 Draft

Budget item	COLMA Approved FY22-23	COLMA Estimated FY22-23 Year-End	COLMA Draft FY23-24	SAN BRUNO Approved FY22-23	SAN BRUNO Estimated FY22-23 Year-End	SAN BRUNO Draft FY23-24	SAN FRANCISQUITO Approved FY22-23	SAN FRANCISQUITO Estimated FY22-23 Year-End	SAN FRANCISQUITO Draft FY23-24
Revenue	\$4,287,533	\$5,361,540	\$5,369,578	\$355,442	\$421,996	\$429,475	\$411,693	\$482,233	\$475,685
Expenses	\$3,503,860	\$2,339,034	\$2,536,825	\$702,134	\$662,179	\$566,329	\$448,316	\$472,112	\$477,123
End of FY Balance (reserves)	\$31,138,216	\$32,768,687	\$35,601,440	\$2,427,236	\$3,538,385	\$3,401,531	\$1,226,611	\$1,141,475	\$1,140,036

CAPITAL PROJECTS BUDGET: FY2022-23 Estimated Year-End, FY2023-24 Draft

Bayfront Canal & Atherton Channel Project (BCACP) and Millbrae-Burlingame Project (M-B)

Budget item	FY22-23 Estimated Year-End	Draft FY23-24	Remaining available funds
Revenue	<p>➡ BCACP – \$634,514</p> <p>➡ M-B – \$1,566,710</p>	<p>➡ BCACP – \$218,066</p> <p>➡ M-B – \$2,075,481</p> <p>Total – \$2,293,547</p>	
Expenses (Capital Outlay)	<p>➡ BCACP – \$291,654</p> <p>➡ M-B – \$1,566,710</p>	<p>➡ BCACP – \$355,160</p> <p>➡ M-B – \$2,075,481</p> <p>Total – \$2,430,641</p>	
Year End Balance	<p>➡ BCACP – \$342,860</p> <p>➡ M-B – \$0</p>	<p>➡ BCACP – (\$137,094)</p> <p>➡ M-B – \$0</p> <p>Total – (\$137,094)</p>	<p>➡ BCACP – \$205,766</p> <p>➡ M-B – \$402,988</p>

CEO's Report

- **Leadership Council Community Acceleration Project Team–OneShoreline Resilient Communities Workshop**
- **Coordination with Caltrans to remove debris from creeks that caused flooding in San Bruno, San Mateo, Belmont/Unincorporated County, San Carlos, Redwood City, and Menlo Park**
- **State budget, potential climate resilience bond, and Assembly Bill 970**
- **June 26 Board meeting agenda is expected to include several items for the Board to consider approving:**
 - **Planning Guidance Policy**
 - **FY2023-24 Operating Budget, Flood Zones Budget, and Capital Projects Budget**
 - **San Francisquito Creek Joint Powers Authority (SFCJPA) Agreement**
 - **FY2023-24 Water Pollution Control Service Charges**
 - **Agreements with San Mateo County for services from County Attorney's Office and Public Works**
 - **Consultant agreement to develop a 5-year maintenance permit for targeted areas of flood-prone creeks**



Next Scheduled Board meeting

June 26, 2023 at 4:00 PM