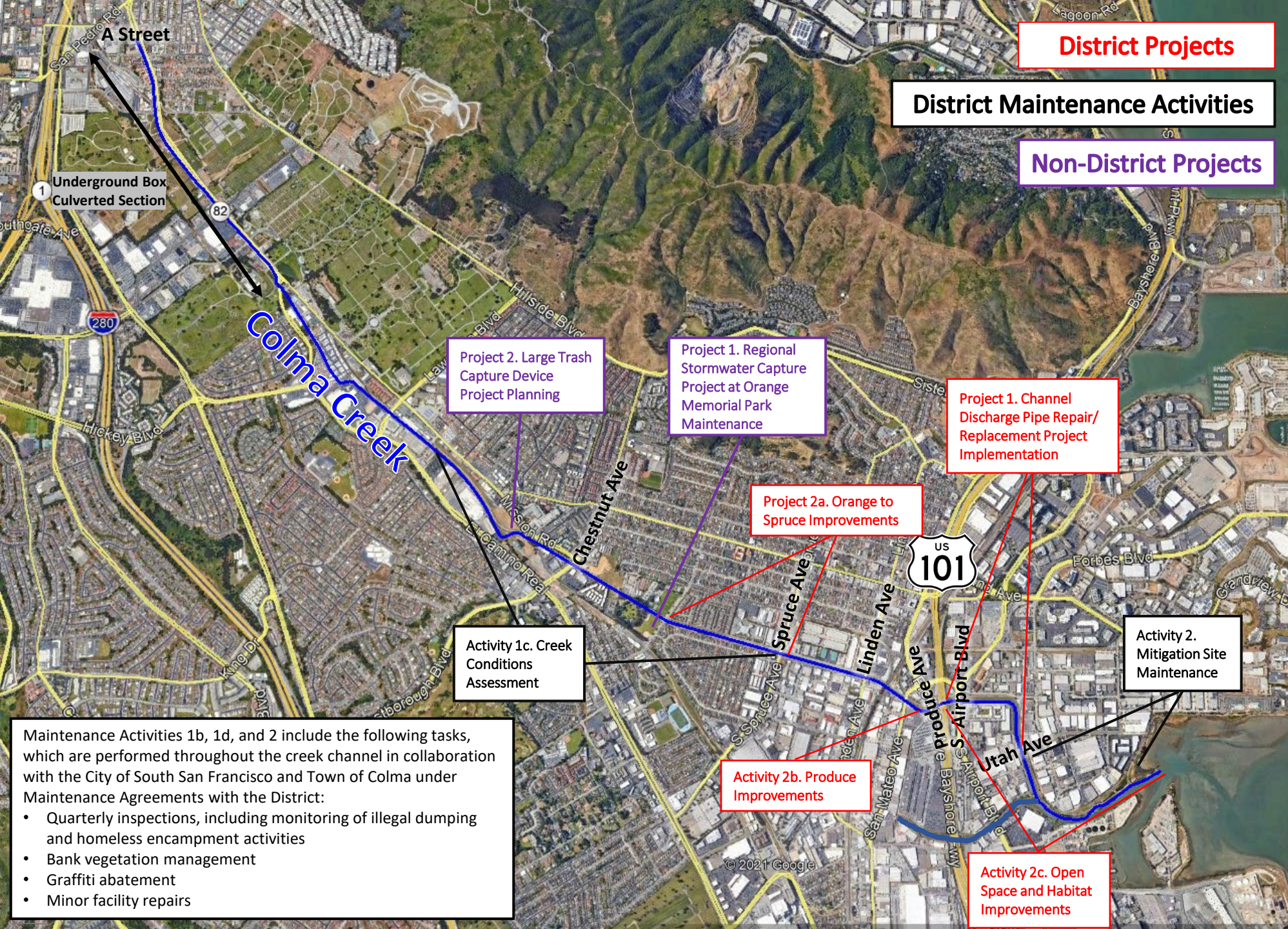


**June 11, 2024**

***Colma Creek Citizens Advisory Committee Meeting***

**AGENDA**

- I. Roll Call**
- II. Public Comment**
- III. Action to set the Agenda and approve the Consent Agenda**
  - a. Approve minutes of the March 12, 2024 meeting**
- IV. Update on Colma Creek Flood Zone Projects and Maintenance Activities**
- V. Adjournment**



**District Projects**

**District Maintenance Activities**

**Non-District Projects**

Project 2. Large Trash Capture Device Project Planning

Project 1. Regional Stormwater Capture Project at Orange Memorial Park Maintenance

Project 1. Channel Discharge Pipe Repair/ Replacement Project Implementation

Project 2a. Orange to Spruce Improvements

Activity 1c. Creek Conditions Assessment

Activity 2. Mitigation Site Maintenance

Activity 2b. Produce Improvements

Activity 2c. Open Space and Habitat Improvements

# Agenda Item 4

## Update on Colma Creek Flood Zone Projects and Maintenance Activities

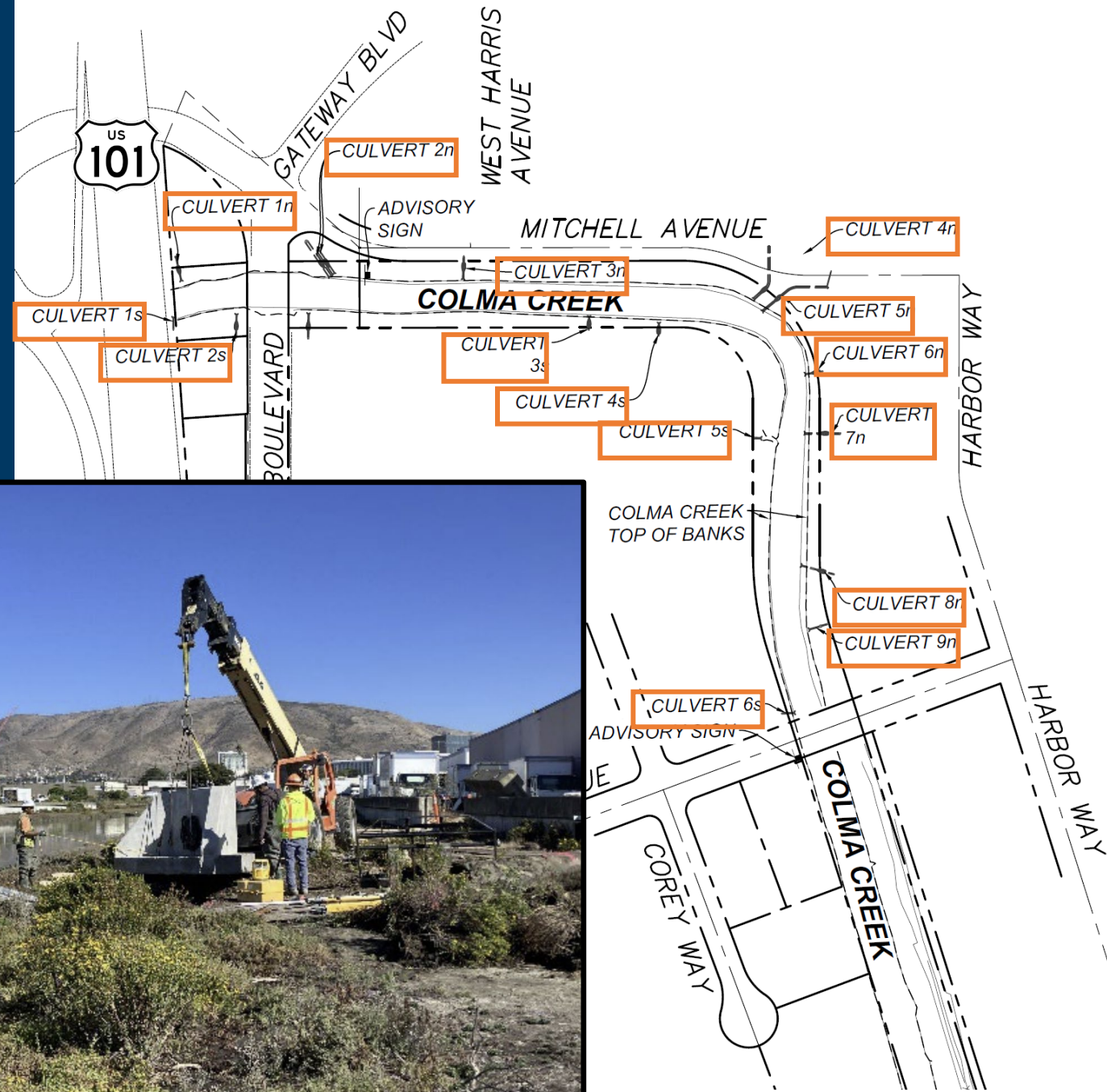
Maintenance Activities 1b, 1d, and 2 include the following tasks, which are performed throughout the creek channel in collaboration with the City of South San Francisco and Town of Colma under Maintenance Agreements with the District:

- Quarterly inspections, including monitoring of illegal dumping and homeless encampment activities
- Bank vegetation management
- Graffiti abatement
- Minor facility repairs

Map of Colma Creek Flood Zone Projects and Maintenance Activities

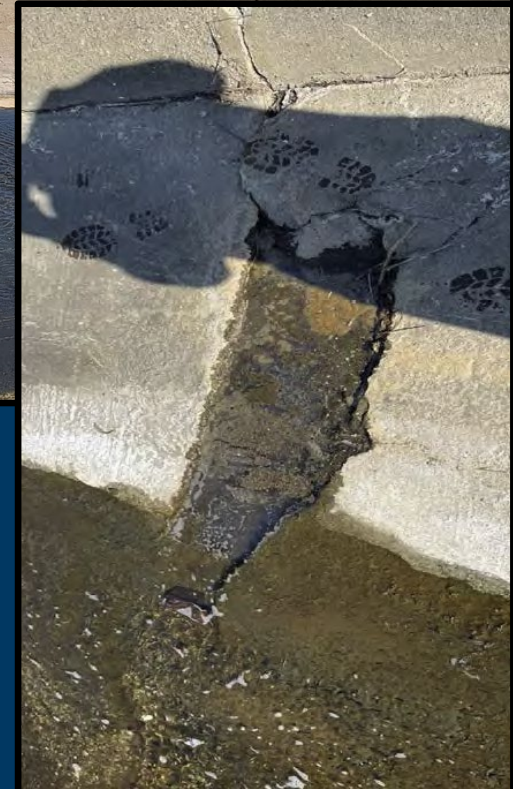
# Channel Discharge Pipe Repair/Replacement Project

- Work continues in this construction season, to repair and replace stormwater culverts that drain to Colma Creek, between U.S. Highway 101 and Utah Avenue
- Nesting Ridgeway's Rail surveys completed—none identified
- Work anticipated to resume in August and to be completed in mid-October



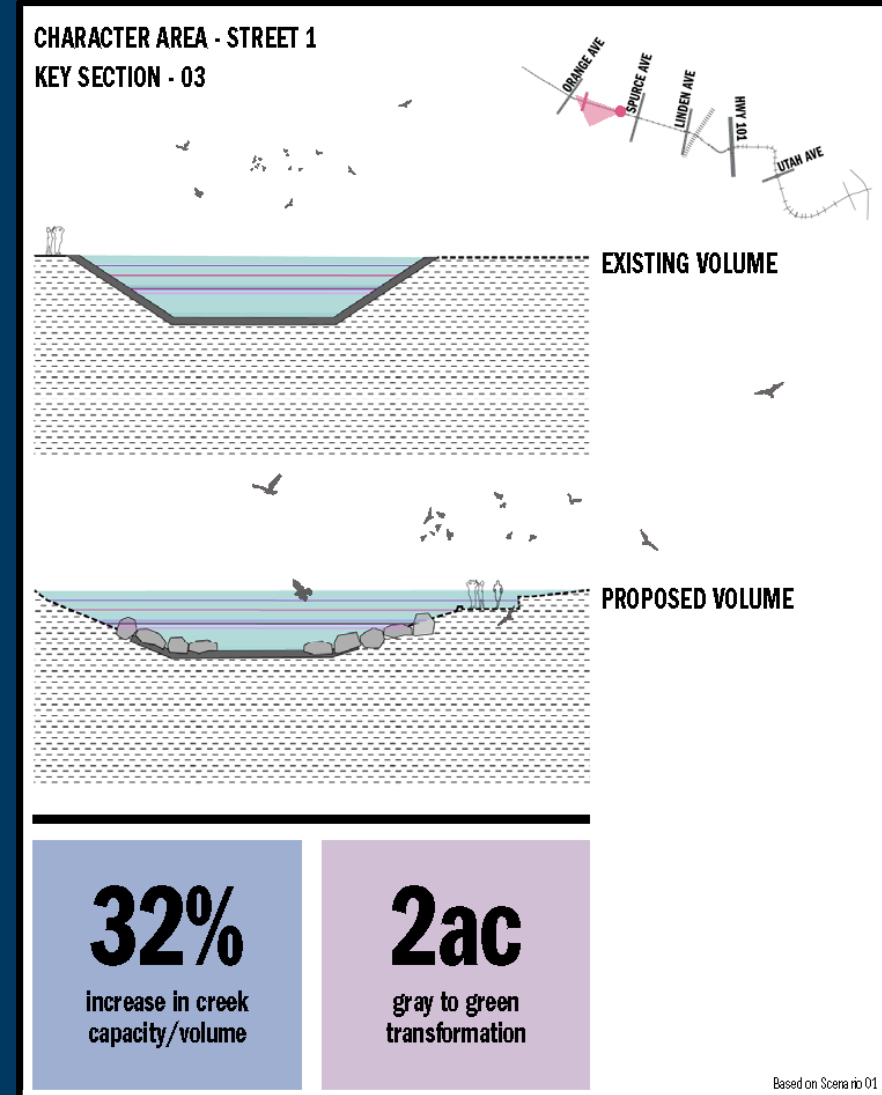
# Colma Creek Conditions Assessment

- In October, Schaaf & Wheeler completed a Conditions Assessment of a 1.5-mile reach of open channel from SSF BART station to Spruce Ave
- The draft Assessment has identified apparent settling and displacement of the channel walls between Orange and Spruce Ave
- S & W has provided a scope of work for the subsequent geotechnical investigation for a not-to-exceed fee of \$89,562



# Colma Creek Adaptation Improvements: Orange to Spruce Ave

- As assessment efforts continue OneShoreline will evaluate near and long-term opportunities for resilience
- Consideration of concepts from Hassell 2020 Colma Creek Adaptation Plan



# Colma Creek Adaptation Improvements: Produce Ave

- Upstream and downstream of Produce Avenue on the north bank structural damage to the flood wall has been observed
- OneShoreline will be exploring feasibility and suitability of options to realize optimal flood management and natural infrastructure



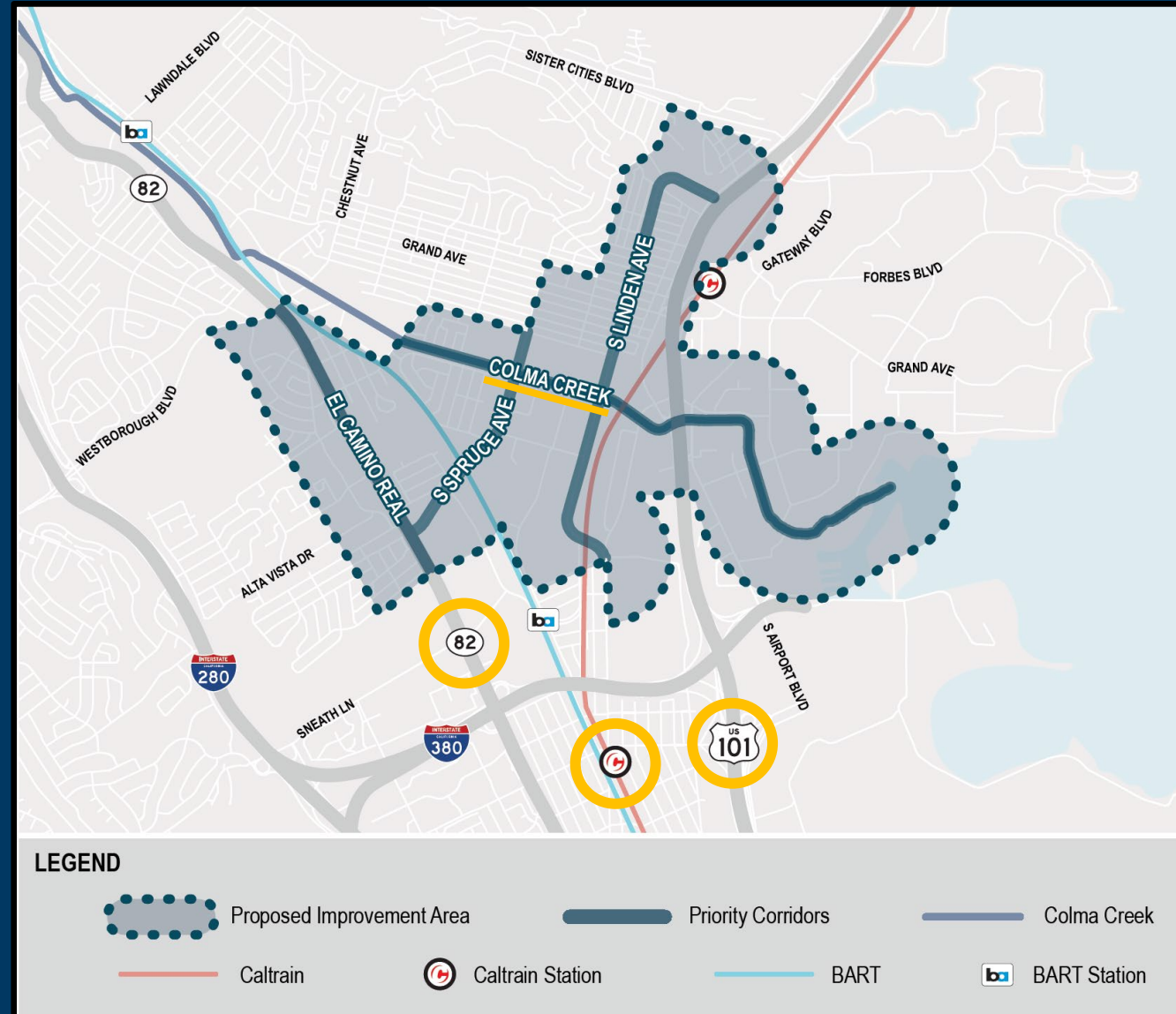
# Colma Creek Adaptation Improvements: Open Space and Habitat





# Caltrans Reconnecting Communities Grant to Connect4SSF Project

- The Transportation Authority's Connect4SSF seeks to strengthen connections between transit, housing, jobs, and open space, focused on 4 barriers
- Caltrans' "Reconnecting Communities: Highways to Boulevards Program" established \$148M for these efforts
- In September 2023, the TA submitted an application for these funds
- This collaborative effort supports our vision to transform the Creek from a walled-off liability into an attractive community asset
- In April OneShoreline staff together with Caltrans, TA, and South San Francisco staff participated in a preliminary walk of areas being considered



# Colma Creek Maintenance Activities

- Scope includes:
  - 400 cubic yards sediment dredging between Caltrain tracks and Produce Ave crossings
  - 4,700 linear feet vegetation maintenance and debris removal between Produce Ave and SSF BART Station
  - Debris removal and fence repairs at Centennial Way Pedestrian Bridge
  - Cleaning and repair of culverts from Spruce up to SSF BART Station
- County has secured a responsive proposal to complete work for a not-to-exceed value of \$224,000
- Work to begin this construction season 2024



# Habitat Restoration & Cleanup Event

## April 13, 2024

- County of San Mateo Public Works Department facilitated native planting and trash cleanup at the mouth of Colma Creek.
- 15 Volunteers
- 70 Native Plants
- 128 Gallons of trash removed





**Next scheduled Committee Meeting**

**Tuesday, September 10, 2024**

**3:00 p.m.**