

1. Roll Call

2. Public Comment Persons wishing to address the Board on District-related matters not on this Agenda may speak for up to two minutes; comments on Agenda items shall be heard during that item for up to two minutes.

3. Action to Set the Agenda and Approve the Consent Agenda

A. Approve the Minutes of the December 18, 2023 and January 29, 2024 District Board meetings

B. Approve the re-appointment of an at-large member to the Colma Creek Citizens Advisory Committee

4. Regular Business

A. Authorize the CEO to execute Amendment No. 1 to a contract with Balance Hydrologics, Inc. for services to expand, upgrade, and maintain the District's Flood Early Warning System

B. Receive an update on District efforts to secure permits for its Routine Maintenance on Bayside Creeks Project and on the early April release for public comment of an Initial Study/Mitigated Negative Declaration under CEQA

C. Authorize the Board Chair to submit letters to federal elected officials supporting a District funding request for the Corps of Engineers to study a project to build resilience of the Sewer Authority Mid-Coastside water treatment plant

D. Discuss upcoming contracts * Bayfront Canal Project mitigation monitoring, Emergency Action Plan, National Flood Insurance Program Community Rating System, Planning Guidance for Resilient Public Infrastructure, Millbrae and Burlingame Project outreach, San Bruno Creek hydraulic model and infrastructure assessment, OneShoreline.org

5. Chair's Report *

6. CEO's Report * Introduce new Project Manager Johnathan Perisho and farewell to outgoing Project Manager Colin Martorana; Peninsula Resilience Planning Project

7. Board Member Reports and Items for a Future Agenda *

8. Adjournment

Board of Directors Meeting

San Mateo County Flood and Sea Level Rise Resiliency District

Agenda Item 3B

Approve the re-appointment of an at-large member to the Colma Creek Citizens Advisory Committee



Members of the Colma Creek Advisory Committee			
Member Name/Designation	Appointed By	Member Since	Term Expiration
<i>City/Town Appointed Representatives (Members)</i>			
Helen Fisicaro, Town of Colma Representative	Colma Town Council	April 1, 2002	March 31, 2026
Sue Vaterlaus, City of Pacifica Representative	Pacifica City Council	April 1, 2018	January 1, 2025 <i>(Appointed annually)</i>
City of South San Francisco Representative	South San Francisco City Council	---	---
Marty Medina, City of San Bruno Representative	San Bruno City Council	April 1, 2020	March 31, 2026
Raymond Buenaventura, City of Daly City Representative	Daly City Council	April 1, 2019	March 31, 2026
<i>Board Appointed Representatives (Members "At-Large")</i>			
Gail DeFries, City of Daly City Member At-Large	OneShoreline Board of Directors	April 1, 2002	March 31, 2026
Edward Bortoli, City of South San Francisco Member At-Large	OneShoreline Board of Directors	December 31, 2014	March 31, 2026
Ryan Mayfield, City of South San Francisco Member At-Large	OneShoreline Board of Directors - <i>Proposed</i>	April 1, 2020 <i>Proposed</i>	March 31, 2028 <i>Proposed</i>
Lissette Morales, City of South San Francisco Member At-Large	OneShoreline Board of Directors	December 13, 2022	March 31, 2025

Agenda Item 4A – Balance Hydrologics, Inc. Amendment No. 1

OneShoreline manages a Flood Early Warning System of 29 broadly distributed precipitation, stream flow, and tide level gauges for flood emergency awareness and response, which can be found at [OneShorelineEarlyWarning.onerain.com/map](https://www.oneshorelineearlywarning.com/map).

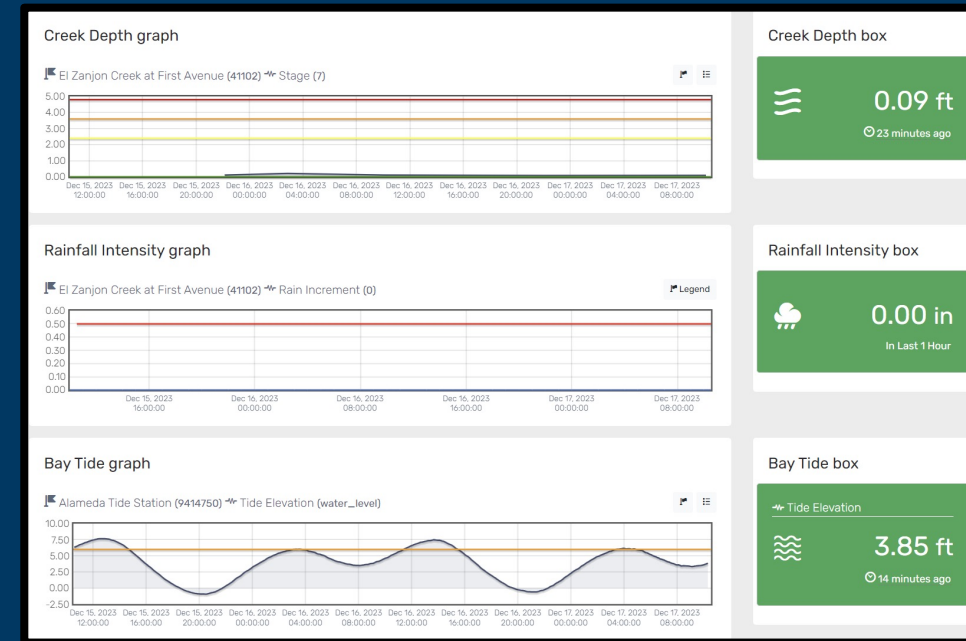
In February 2023, the Board authorized execution of a contract with Balance Hydrologics to support this effort, for \$81,643 with a term through June 30, 2024. At this time, \$53,631 remains in the contract.

Since contract execution, Balance has expertly supported District work to:

- Expand the system to our Pacific coast
- Advance flood early warning threshold development, enhance usability, and build dashboards
- Site upcoming stations and equipment, including on Green Hills Creek, Pilarcitos Creek in the hills above Half Moon Bay, and potentially San Mateo Creek, Cordilleras Creek, and Atherton Channel

Through the proposed Amendment No. 1, we seek to extend the term of this contract for two additional fiscal years (through June 30, 2026) and increase the budget by \$33,357 to a total not-to-exceed amount of \$115,000.

RECOMMENDATION TO BOARD: Authorize the CEO to execute Amendment No. 1



Agenda Item 4B

Routine Maintenance on Bayside Creeks Project and early April release for public comment of an Initial Study/Mitigated Negative Declaration under CEQA

Flooding the past two winters highlighted the insufficient stormwater conveyance capacity due to years of deferred maintenance on Bayside creeks.

In response, in June 2023 the Board authorized a contract with Montrose Environmental Solutions, Inc. to support OneShoreline efforts to secure environmental permits to enable local jurisdictions and Caltrans to perform maintenance on targeted flood-prone reaches of San Bruno, San Mateo, Belmont, Atherton, and Cordilleras creeks.



Since then, staff have worked with Montrose to develop environmental regulatory permit applications, which include the Project's Initial Study/Mitigated Negative Declaration ("IS/MND") document to comply with CEQA. The IS/MND describes the Project's environmental setting and existing conditions, and evaluates potential temporary and permanent impacts in the following areas (among others):

biological & cultural resources

water quality

hydrology

hazardous materials

land use & planning

emissions and air quality

noise

recreation, and traffic

In early April, we plan to submit the draft IS/MND to the State and commence a 30-day public comment period. Following that review period, we plan to bring the IS/MND and the comments received to the Board for final review and adoption at the May 20, 2024 meeting, so the first maintenance activities can be initiated in early summer 2024.

Agenda Item 4C

Supporting a funding request for the Corps of Engineers to study a federal project to build resilience for the Sewer Authority Mid-Coastside (SAM) water treatment plant

- Flooding at the facility will increase with climate change-fueled storms, SLR, and coastal erosion. Following substantial flooding on 12/31/22, SAM studied its vulnerability and potential remedies.
- In early March, SAM asked OneShoreline to request funds for the Army Corps of Engineers to study the federal interest in, and feasibility of, building long-term climate resilience to safeguard:
 - Critical infrastructure
 - Facility service area to 27,000 people in Half Moon Bay and unincorporated County communities, as shown in red at right
 - Resources within the Monterey Bay National Marine Sanctuary, HMB State Beach, nearby wetlands, and the Coastal Trail
- U.S. Senator Padilla (and potentially other federal elected officials) require a letter of support from the requesting agency's governing body. OneShoreline has secured letters from Assemblymember Marc Berman and the SAM Board Chair.

RECOMMENDATION TO BOARD: Authorize Chair to sign support letter



Agenda Item 4D Discussion of upcoming contracts

Bayfront Canal Project mitigation monitoring

- While the diversion structure was completed in 2022, the construction was accepted by OneShoreline in December 2023.
- The monitoring and maintenance of the project's environmental mitigation site is required for at least 5 years to ensure the new habitat is enduring.
- OneShoreline staff will release an RFP for these services in April.



Emergency Action Plan (EAP)

- OneShoreline's flood emergency planning and early warning work supported by a CA Dept. of Water Resources grant includes the development of at least one EAP.
- An EAP is a living document that identifies flood emergency conditions within a watershed and specifies coordinated communications and pre-meditated actions to minimize loss of life, property damage, and impacts to infrastructure.
- In early April, we will release an RFP for consultant support to develop an EAP focused on the Belmont Creek watershed; staff anticipates bringing a consultant contract to the Board for approval at the June Board meeting.



Agenda Item 4D National Flood Insurance Program Community Rating System

- **FEMA's National Flood Insurance Program Community Rating System (CRS) can reduce insurance premiums in communities that go beyond FEMA's minimum floodplain management requirements.**
- **On September 18, 2023 the OneShoreline Board authorized the CEO to execute a grant agreement with San Mateo County for Measure K funds to advance three efforts, including supporting jurisdiction participation in the CRS.**
- **Last month, OneShoreline solicited cost estimates from three consultants with experience working with communities on the CRS program. Of the proposals received, Walker Floodplain Management was selected based on proposal content and cost, for a contract amount not-to-exceed \$67,000 through June 2025. The first activity in April will be to reach out to the 15 cities in the county that do not currently participate in the CRS program.**

Planning Guidance for Resilient Public Infrastructure

- **OneShoreline plans to build on its previous planning guidance document for private development with a new document focused on integrating climate risks into processes and documents used to plan, site, and design public infrastructure.**
- **Like private development, the public infrastructure our communities depend upon must also be resilient to future conditions associated with extreme precipitation, coastal erosion, sea level rise, and shallow groundwater rise.**
- **In response to a OneShoreline RFP to develop the guidance, OneShoreline received proposals from three consultant teams, who we will interview next week. We intend to bring a contract to the Board at its April 22 Board meeting.**



Agenda Item 4D Millbrae and Burlingame Project outreach



Before initiating the Draft EIR for the Millbrae and Burlingame Shoreline Area Protection and Enhancement Project, OneShoreline will contract with a consultant to support the development of an outreach plan to share project information with, and solicit input from, the following audiences:

- public and private landowners and developers
- other stakeholders
- community-based organizations
- the broader public

Throughout the project, the consultant will support implementation of the outreach plan components focused on the CBOs and the broader public. OneShoreline will conduct an informal solicitation process to hire this consultant and bring this item back to the Board at either the April or May Board meeting.

Agenda Item 4D San Bruno Creek hydraulic model and infrastructure assessment

To close key data gaps needed to launch a regional project in the San Bruno watershed, OneShoreline intends to execute the following contracts to:

- Update the San Bruno Creek hydraulic model to improve our understanding of the multiple sources of water that flow through the City of San Bruno storm drain network and San Bruno Creek to the Bay and update our modeling to include latest extreme precipitation conditions and sea level rise scenarios; and
- Assess the condition of OneShoreline assets (1948 tide gate, 2 1960's era pump stations) to establish a plan for these assets, given climate change and that current infrastructure is at the end of its intended lifespan.

OneShoreline has conducted an informal solicitation process, selected firms, and plans to bring contracts with the recommended firms to the April 22 Board meeting.



Contract to improve the OneShoreline.org website

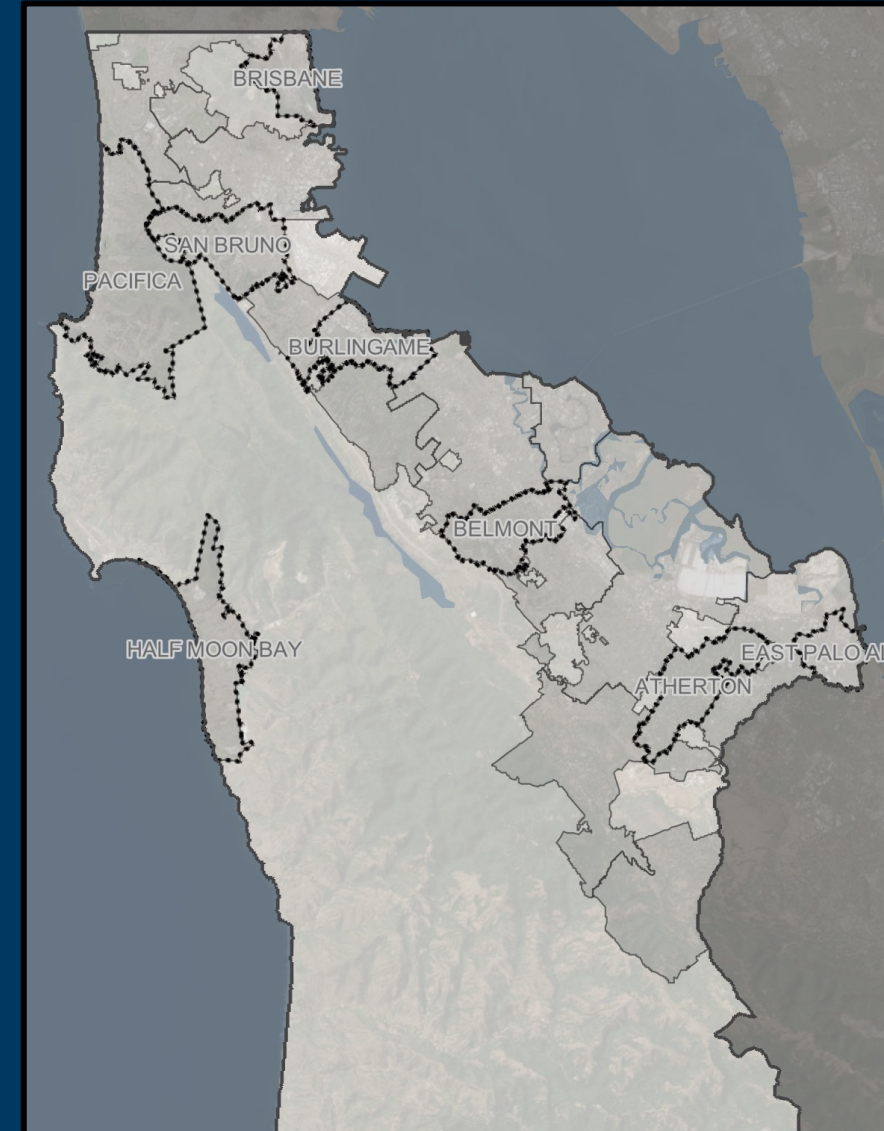
Increased functionality and options for:

- Upcoming events
- Social media
- Searches of meetings and documents
- Projects page
- Latest news
- Image quality
- Security enhancements
- Modernity

The screenshot displays the OneShoreline.org website. At the top, the header includes 'SAN MATEO COUNTY FLOOD & SEA LEVEL RISE RESILIENCY DISTRICT' on the left and 'CONTACT | SEARCH' with a magnifying glass icon on the right. Below the header is the OneShoreline logo, which consists of a stylized 'S' in a blue and green circle, followed by the text 'OneShoreline' in green and 'Building Solutions for a Changing Climate' in blue. A navigation menu below the logo contains 'ABOUT | WHAT WE DO | NEWS & RESOURCES | MEETINGS & AGENDAS'. The main content area features a large map of San Mateo County with various geographical features and cities labeled. Overlaid on the map is the text 'Learn about our countywide early warning system' and a green button with the text 'LEARN MORE >'. Below the map is a section titled 'NEWS & RESOURCES' in white text on a dark blue background. This section contains three columns of content, each with a representative image and a title: 'LATEST NEWS' with an image of a bridge, 'UPCOMING EVENTS' with an image of a conference room, and 'JOBS & PROPOSALS' with an image of hands reviewing documents.

Agenda Item 6 CEO's Report Peninsula Resilience Planning Project

- San Mateo County, Town of Atherton, and the cities of Belmont, Brisbane, Burlingame, East Palo Alto, Half Moon Bay, Pacifica, and San Bruno are working collaboratively on the PREP project to update the General Plan Safety Element of these jurisdictions.
- The Safety Element is a required section of a general plan that identifies potential natural and human-caused hazards that could affect residents, businesses, and services in the community.
- OneShoreline has been participating in the Steering Committee for PREP since the project began in July 2023, focused on providing input on the Plan's draft hazard assessment (including what sea level rise scenario to use).
- As the Plan's template text is developed, OneShoreline will focus on providing lessons learned and template guidance from its Planning Policy Guidance.



Agenda Item 6 CEO's Report

Welcome Johnathan Perisho

and

Farewell Colin Martorana



Next Scheduled Board meeting

April 22, 2024 at 4:00 PM