

# Board of Directors Meeting

## San Mateo County Flood and Sea Level Rise Resiliency District

## AGENDA

October 28, 2024

4:00 PM

- 1. Roll Call**
- 2. Public Comment** Persons wishing to address the Board on District-related matters not on this Agenda, as well as items listed under Action to Approve the Consent Agenda, may speak for up to two minutes; comments on Agenda items shall be heard during that item for up to two minutes.
- 3. Action to Set the Agenda and Approve the Consent Agenda \***
- 4. Regular Business**
  - A. Authorize the CEO to execute an agreement with San Mateo County to receive a grant of \$2,250,000
  - B. Adopt Resolution 2024-10-28 to designate Applicant's Agents for Non-State Agencies for \$900,000 from the Flood Mitigation Assistance Grant Program administered by the Federal Emergency Management Agency (FEMA)
  - C. Receive a Millbrae and Burlingame Shoreline Resilience Project (MBSRP) update and discuss refined alternatives
  - D. Authorize the CEO to execute a Memorandum of Understanding with the City of Burlingame for \$300,000 in funding for the MBSRP from FEMA's Building Resilient Infrastructure and Communities Grant Program
  - E. Authorize the CEO to execute Amendment 1 to Task Order 1 under the Master Services Agreement with Schaaf & Wheeler Consulting Civil Engineers to complete data collection, 30% design, and a Draft Environmental Impact Report for the MBSRP
  - F. Authorize the CEO to execute Amendment 1 to a contract with Civic Edge Consulting for services to develop and support the implementation of an outreach plan for the MBSRP
- 5. Chair's Report \***
- 6. CEO's Report \***
- 7. Board Member Reports and Items for a Future Agenda \***
- 8. Adjournment**

## **Agenda Item 4A**

**Authorize the CEO to execute an agreement with San Mateo County to receive a grant of \$2,250,000**

---

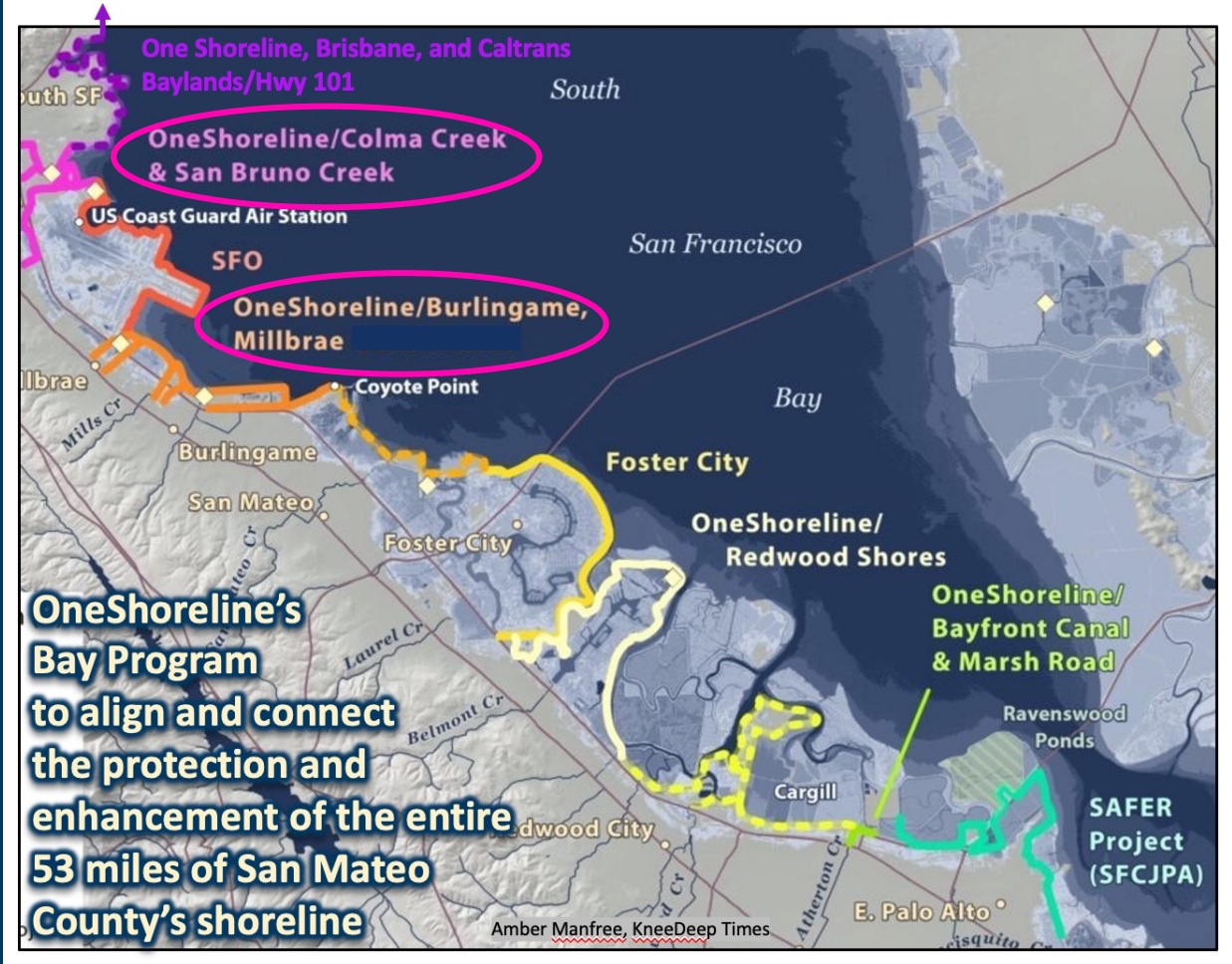
**Through Measure K, a half-cent general sales tax approved by San Mateo County voters, the County has previously supported OneShoreline operating and consulting costs associated with specific projects. With County staff from the Sustainability Department and Supervisor Pine's office, OneShoreline's CEO has developed a new draft Agreement to provide funding at the same level (\$750,000/year) for the same duration (three years) that the County provided to OneShoreline during its start-up period in 2020, 2021, and 2022.**

**This new grant would provide \$2,250,000 during the 2025-26, 2026-27, and 2027-28 fiscal years for the following efforts and based on a work plan for these funds approved by the OneShoreline Board when the annual budget is approved:**

- Advance the incorporation of climate resilience and future conditions thinking into local jurisdiction land use documents and approvals of private and public developments.**
- Work with jurisdictions to advance and align the planning, funding, design, and permitting of projects that incorporate climate resilience for developed, natural, and recreational areas across jurisdictions.**
- Assist jurisdictions and partners to plan for, support early warning of, and reduce the impacts of extreme storms.**
- Collaborate with the County to provide support services related to grants, reports, policies, etc.**

**RECOMMENDATION: Authorize the CEO to enter into an Agreement with San Mateo County for \$2,250,000 for fiscal years 2025-26, 2026-27, and 2027-28, subject to minor modifications agreed to by OneShoreline CEO and legal counsel.**

The projects discussed today for Board Agenda items 4B – 4F serve the cities of Burlingame, Millbrae, San Bruno, and South San Francisco



## Agenda Item 4B

### Resolution 2024-10-28 to accept \$900,000 FEMA grant for San Bruno Creek and Shoreline to Colma Creek

---

- In December 2022, OneShoreline submitted an application to the CA Governor's Office of Emergency Services (Cal OES) for FEMA grant funding. Project details are provided on the following slide.
- On August 22, 2024, OneShoreline received notice that FEMA had approved \$900,000 in funding. This grant requires a \$605,000 local match, which OneShoreline will source from the San Bruno Flood Zone and potentially the Colma Creek Flood Zone, which are funded by property taxes.
- To be eligible to receive financial assistance from this program, OneShoreline must complete and submit Cal OES Form 130, a Designation of Applicant's Agent Resolution for Non-State Agencies, which must be adopted as a resolution by the Board.
- **RECOMMENDATION:** Adopt Resolution 2024-10-28 to approve the Designation of Applicant's Agents for Non-State Agencies for \$900,000 in funding from FEMA's Flood Mitigation Assistance program.

## Agenda Item 4B

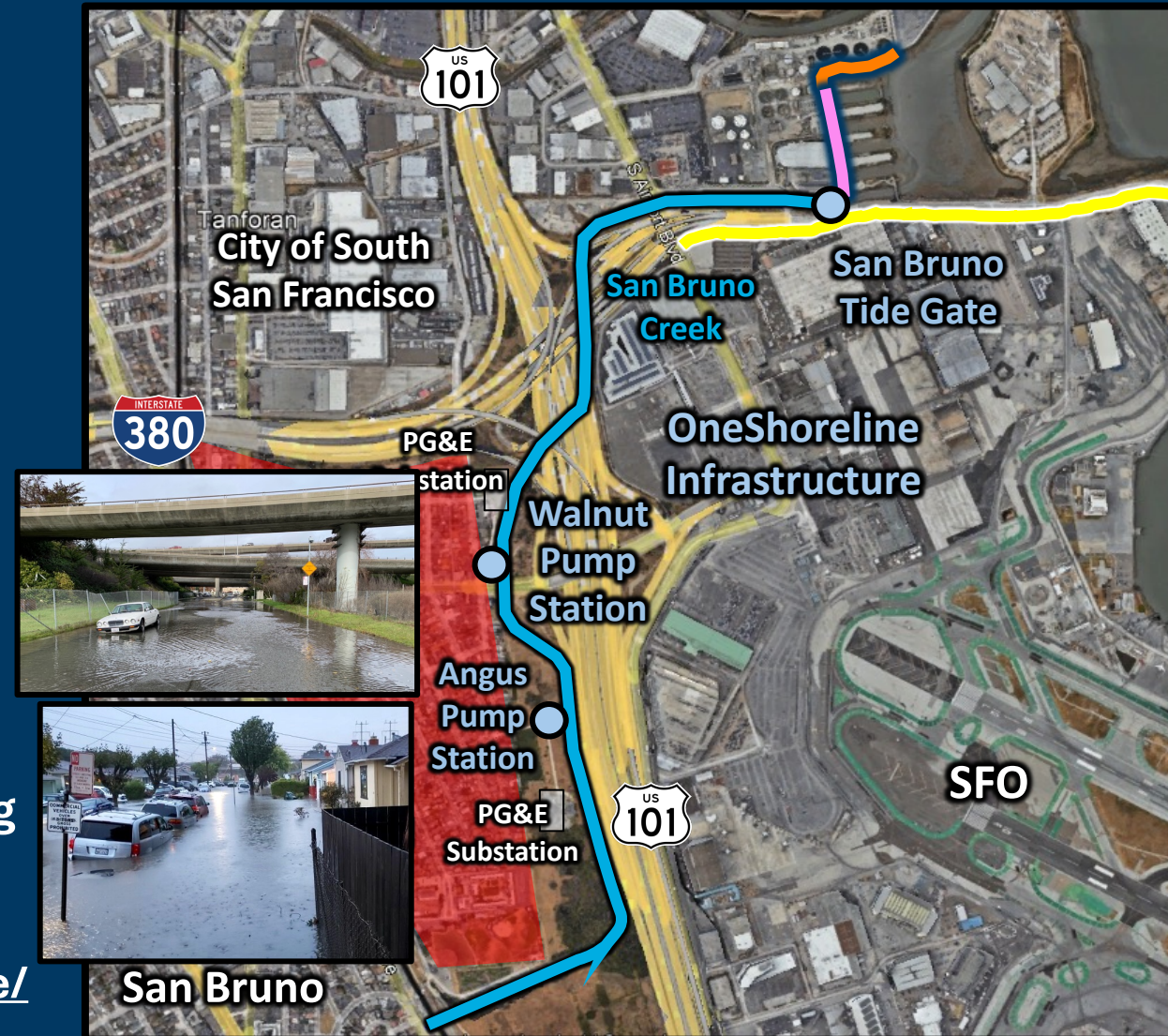
Resolution 2024-10-28 to accept \$900,000 FEMA grant for San Bruno Creek and Shoreline to Colma Creek

The project extends from the **SSF Water Quality Control Plant proposed seawall** along the **Bay shoreline** to OneShoreline's San Bruno Tide Gate where **SFO proposes its seawall**, and **up San Bruno Creek** to the Caltrain tracks.

The \$900,000 FEMA grant will fund:

- closing data gaps (builds on existing studies)
- engaging stakeholders and the public
- developing alternatives, cost estimates, and a conceptual design of a preferred alternative
- developing an application for more FEMA funding

More details about this project:  
[oneshoreline.org/projects/san-bruno-creek-flood-zone/](https://oneshoreline.org/projects/san-bruno-creek-flood-zone/)



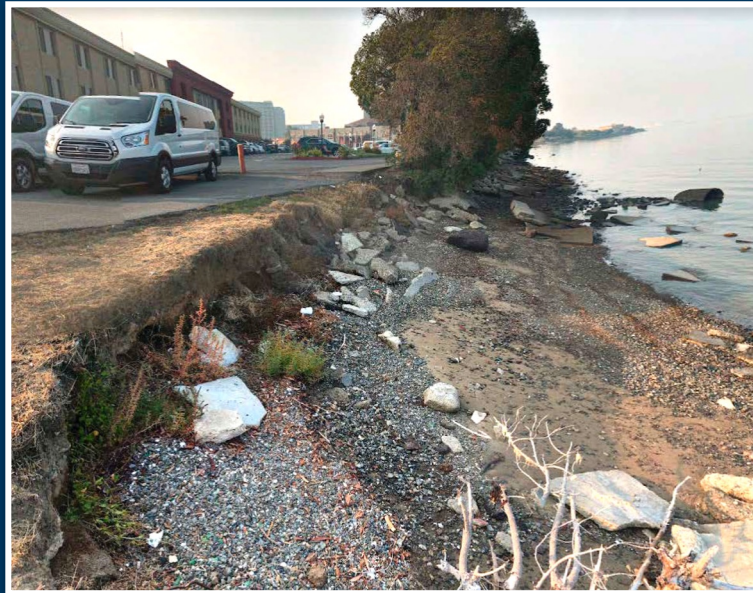
## Agenda Item 4C:

# Millbrae and Burlingame Shoreline Resilience Project (MBSRP) update and refined alternatives

**Overall goal: Long-term climate resilience against sea level rise and extreme storms for developed, natural, and public access areas. More info at: [OneShoreline.org/MBSRP](https://www.oneshoreline.org/MBSRP)**



**Protect shoreline area against current and future hazards**

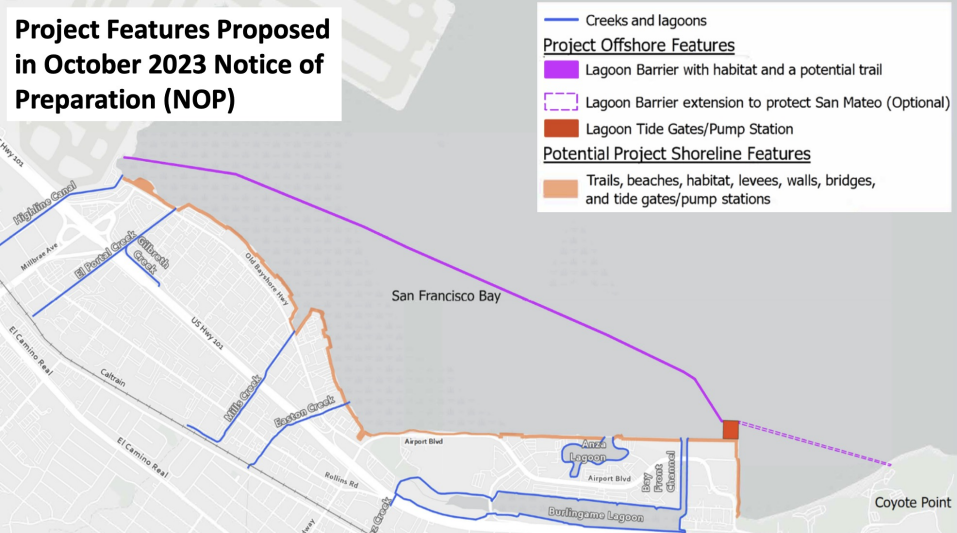
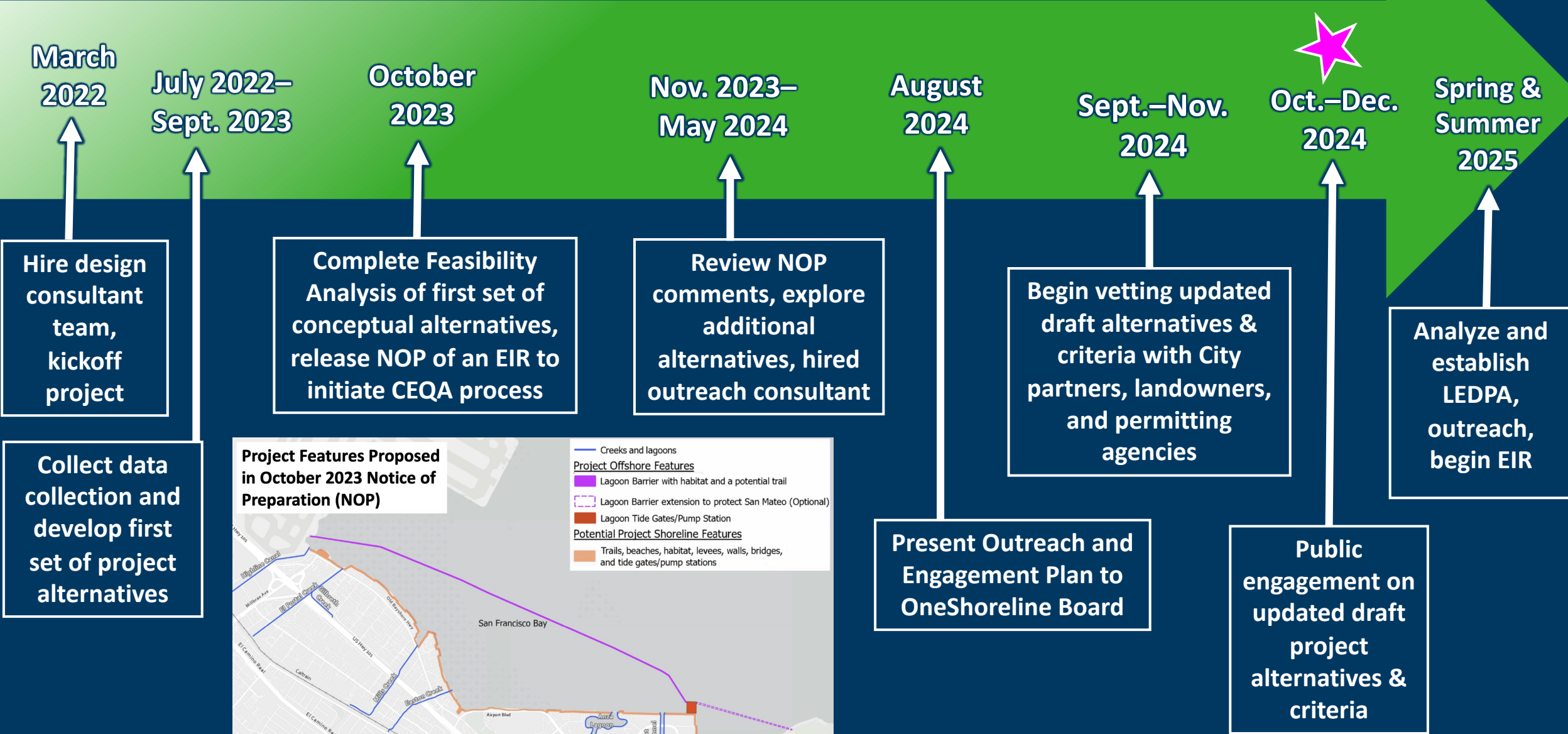


**Facilitate healthy and sustainable ecosystems**



**Enhance the shoreline area experience today and in the future**

# Project Progress to Date and Next Steps



## What we heard in many NOP comments

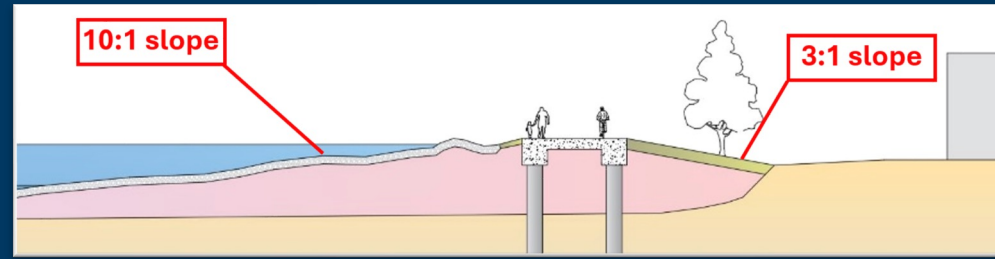
- **A large offshore lagoon can impact water quality, including changing circulation, increasing pollutants, turbidity, temperature, and salinity, and increasing the risk of algal blooms.**
- **A large offshore lagoon can impact specific bird, plant, and aquatic species and their habitats. Nature-based solutions are a top priority.**
- **A large offshore lagoon could attract wildlife, including birds of concern to SFO.**
- **A large offshore lagoon, particularly the optional extension to Coyote Point, limits wind sport access.**

## How we responded to these comments

- **OneShoreline does not plan to carry the large offshore lagoon alternative forward for further analysis. Updated draft alternatives include shoreline features and a nearshore waterway.**
- **Early modeling indicates a smaller nearshore footprint results in maximum tidal exchange. Further studies on water quality impacts will be completed with a more detailed design.**
- **Features that incorporate natural infrastructure and minimize attracting high-flying birds are incorporated into all draft alternatives.**
- **Updated draft alternatives no longer include an optional extension to Coyote Point.**



Our vision is this



A gradually-sloped living shoreline provides two key benefits:

- Shoreline elevations can be lower
- Less abrupt transition from land to Bay for people and wildlife

Rather than this



# Updated Draft Alternatives

OneShoreline does not have a preferred alternative at this time. Feedback this fall will directly inform changes to these draft alternatives and the process to ultimately identify a preferred alternative.

A

## Remain on Shoreline



### Coastal Flood Protection

Manage creek water at each creek mouth (5 pump stations)



### Habitat Functionality

Living shoreline

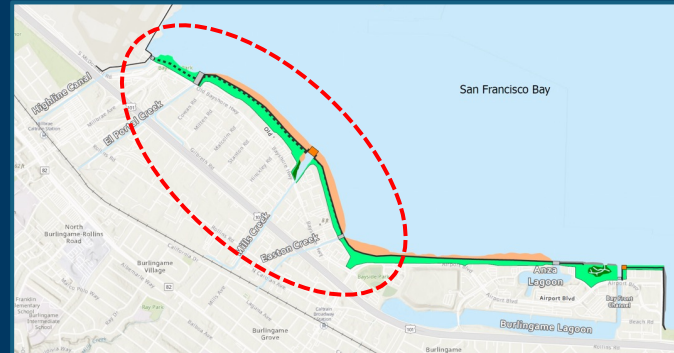


### Public Access + Recreation

Bay Trail improvements, 2 new or improved shoreline parks

B

## Park Tunnels



### Coastal Flood Protection

Manage creek water through tunnels (2 pump stations)



### Habitat Functionality

Living shoreline



### Public Access + Recreation

Bay Trail improvements, 3 new or improved shoreline parks

C

## Nearshore Waterway



### Coastal Flood Protection

Manage creek water through waterway (2 pump stations)



### Habitat Functionality

Living shoreline & fish passage



### Public Access + Recreation

Bay Trail improvements, new Bay Trail, 1 new shoreline park

# Alternative A

- Pump Station with Tide Gate
- Tide Gate
- Nearshore reef / oyster bag breakwaters
- Sand bars / coarse beach
- Vegetation (eelgrass / marsh)
- Enhance Bay Trail
- Close Bay Trail Gap
- New Shoreline Redevelopment

Tie to SPP Reach 15

Reach A1

Highline Canal

El Portal Creek

Raise and improve Bayfront Park

Reach A2

Gradual Slope for Living Shoreline

Reach A3

New Shoreline Park within 100-ft Buffer Zone

Flatten slope

Reach A4

Reach A5

Anza Lagoon

Airport Blvd

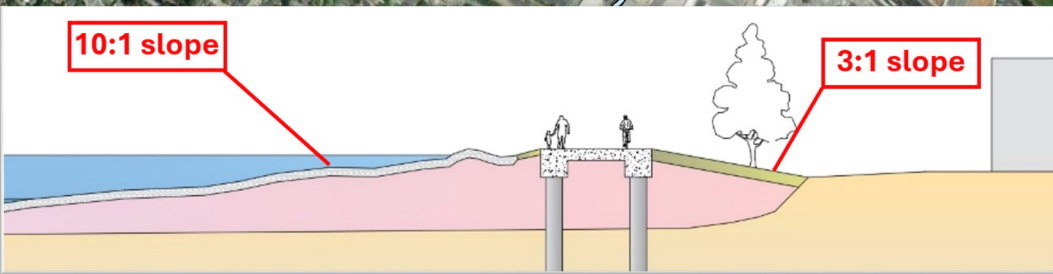
Bay Front Channel

Burlingame Lagoon

Tie to San Mateo Bay Trail

10:1 slope

3:1 slope



# Alternative B

- Pump Station with Tide Gate
- Tide Gate
- Nearshore reef / oyster bag breakwaters
- Sand bars / coarse beach
- Vegetation (eelgrass / marsh)
- Underground Tunnel (Bypass)
- High Flow Bypass Structure
- Enhance Bay Trail
- Close Bay Trail Gap



Tie to SPP Reach 15

Reach B1

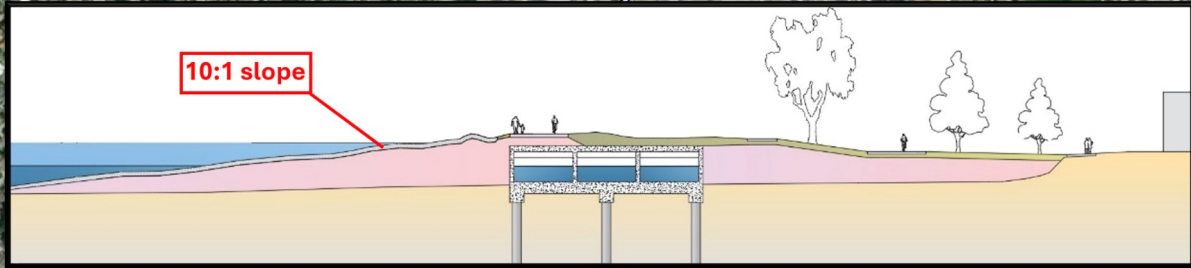
Raise, improve, and extend Bayfront Park

Tunnel underground park

Gradual Slope for Living Shoreline

New Shoreline Park within 100-ft Buffer Zone

Flatten slope



10:1 slope

Reach B3

Reach B4

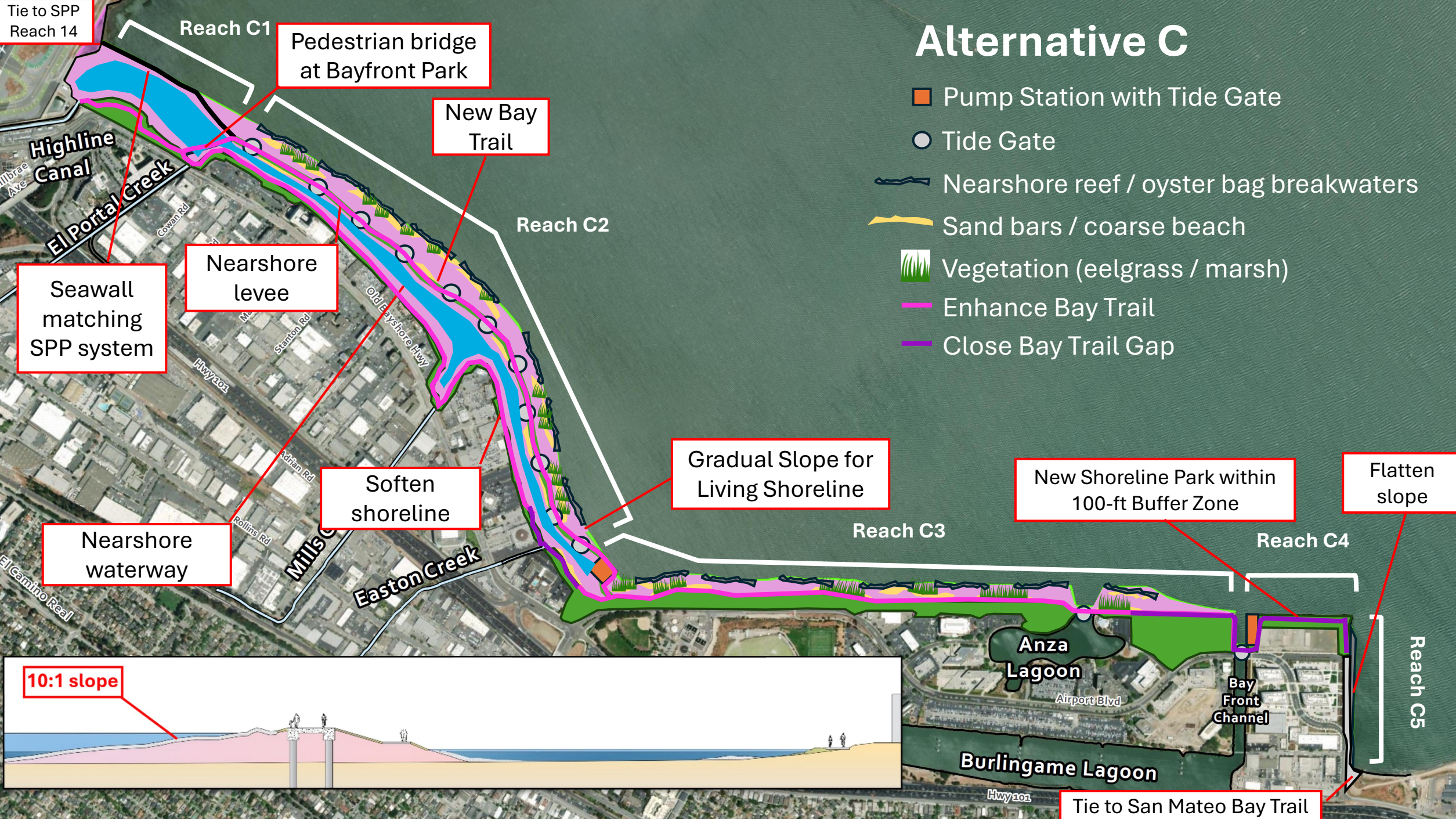
Reach B5

Tie to San Mateo Bay Trail



# Alternative C

- Pump Station with Tide Gate
- Tide Gate
- Nearshore reef / oyster bag breakwaters
- Sand bars / coarse beach
- Vegetation (eelgrass / marsh)
- Enhance Bay Trail
- Close Bay Trail Gap



Tie to SPP  
Reach 14

Reach C1

Pedestrian bridge  
at Bayfront Park

New Bay  
Trail

Reach C2

Nearshore  
levee

Seawall  
matching  
SPP system

Soften  
shoreline

Gradual Slope for  
Living Shoreline

New Shoreline Park within  
100-ft Buffer Zone

Flatten  
slope

Reach C3

Reach C4

Reach C5

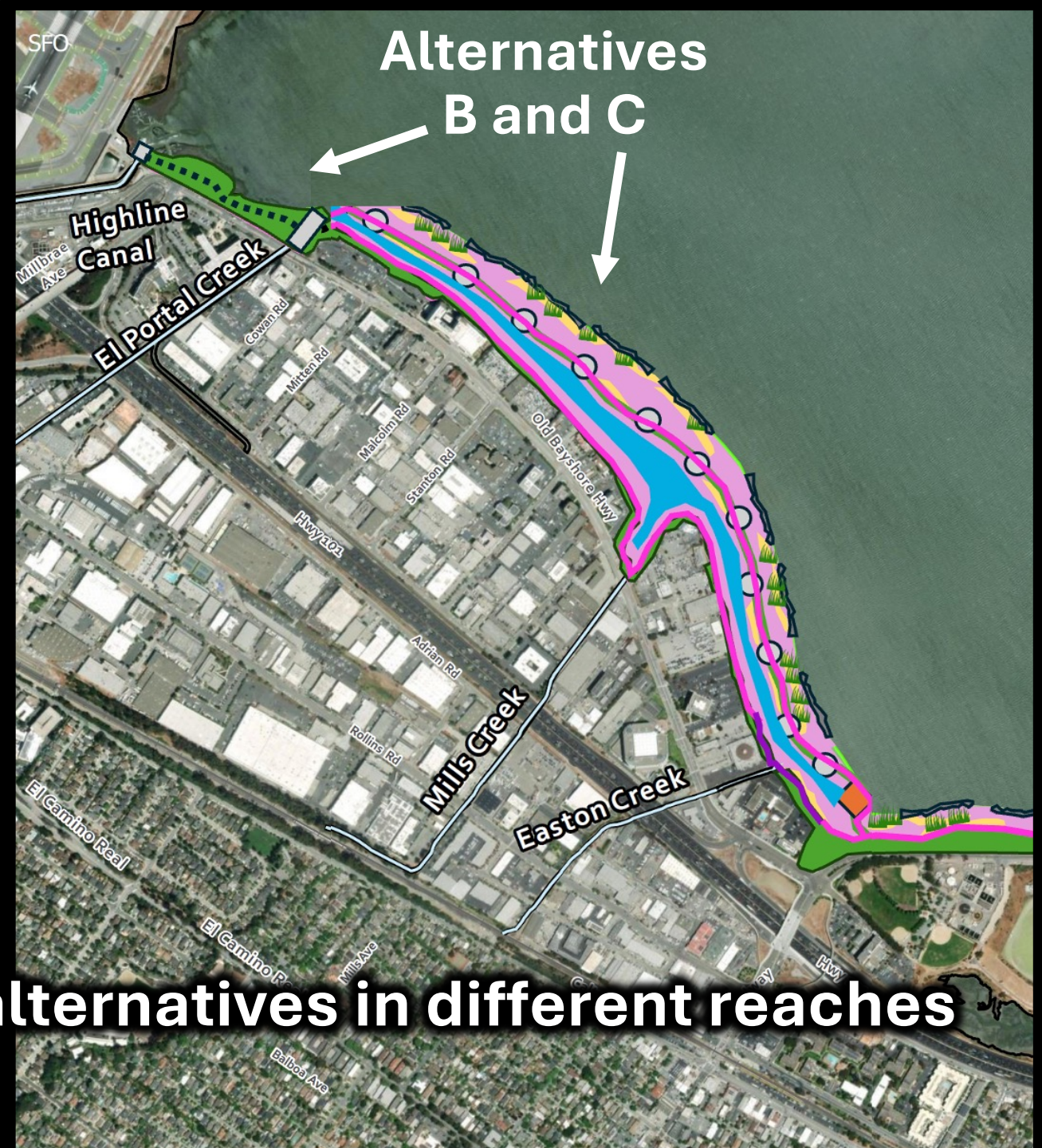
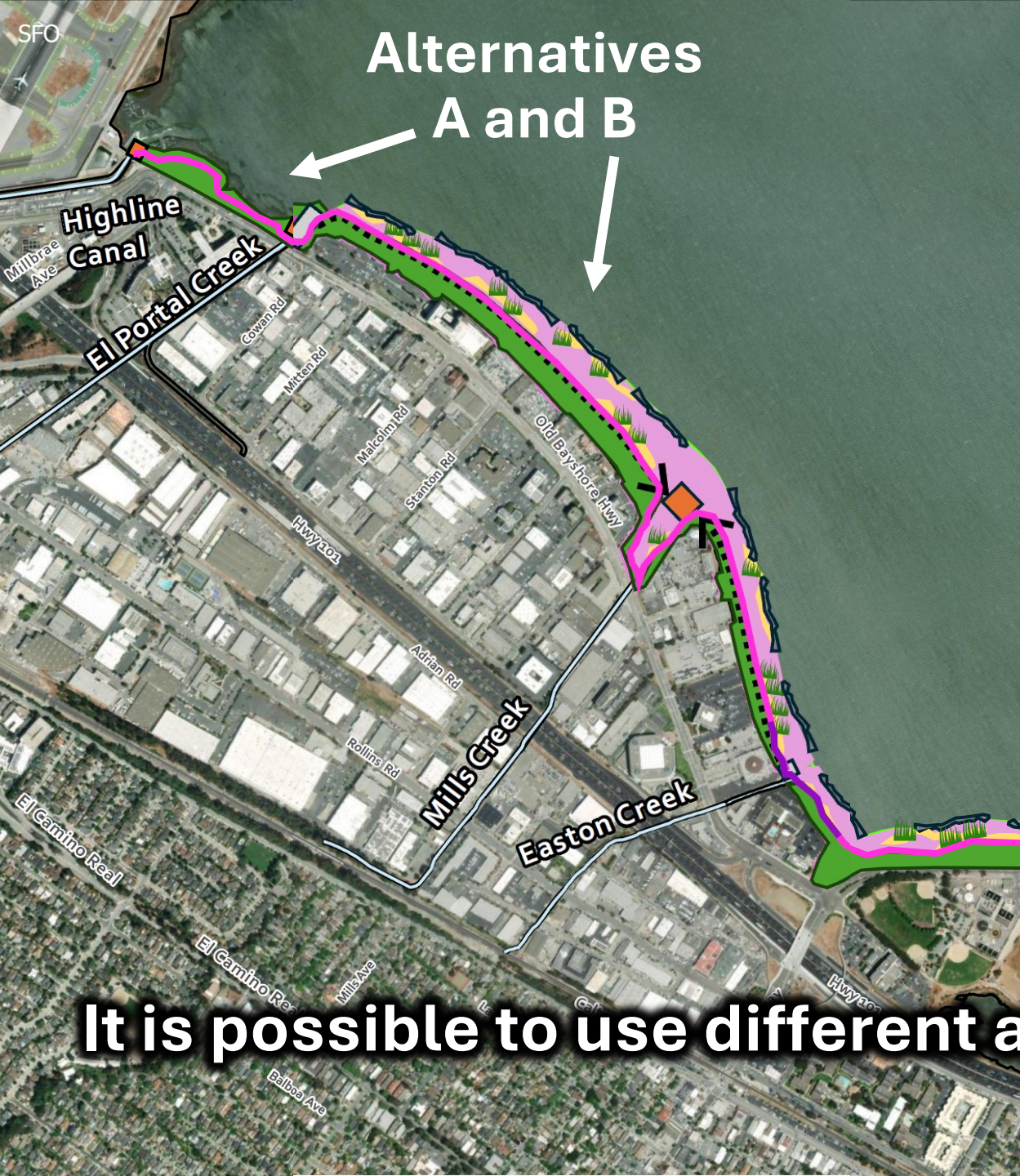
10:1 slope

Anza  
Lagoon

Bay  
Front  
Channel

Burlingame Lagoon

Tie to San Mateo Bay Trail



**It is possible to use different alternatives in different reaches**

## To select a preferred project alternative, we propose the following criteria:

### **Flood Protection**

Does the alternative provide the required coastal flood protection benefits? Does it allow for stormwater to drain? Does it increase or reduce flooding from groundwater rise?

### **Habitat**

Does the alternative harm or benefit current and future species habitat? Does it impact water quality?

### **Public Access + Recreation**

What does the alternative look like and how would one experience it? What benefits or impacts does the alternative have on the Bay Trail and Bay recreation?

### **Implementation**

How will the alternative be implemented? Is it feasible to obtain the land rights and permits necessary to construct? What is the alternative's cost and schedule?

### **Operations & Maintenance**

How will the alternative be operated and maintained? How will this change as sea levels rise and storms become more extreme?

### **SFO**

Does the alternative increase the likelihood of bird strikes?

## Next Steps



You can find event details and links to register on our project website: [OneShoreline.org/MBSRP](https://OneShoreline.org/MBSRP)

**Ongoing** Vetting with city staff, permitting agencies, landowners

**Today** Presentation to OneShoreline Board

**Nov. 12** Presentation to Millbrae City Council

**Nov. 16** Burlingame Community Workshop

**Nov. 17** Public shoreline walking tour

**Nov. 18** Presentation to Burlingame City Council

**Nov. 19** Millbrae Community Workshop

**Dec. 4** Online Community Meeting (webinar)

# Feedback + Q&A



[OneShoreline.org/MBSRP](https://www.OnShoreline.org/MBSRP)



[MBSRP@OneShoreline.org](mailto:MBSRP@OneShoreline.org)

## **Agenda Item 4D: Authorize the CEO to execute an MOU with Burlingame for \$300,000 for the MBSRP from FEMA**

---

- **In December 2020, the City of Burlingame with support from OneShoreline submitted an application to the CA Governor’s Office of Emergency Services (“Cal OES”) for a \$300,000 grant from FEMA’s BRIC program.**
- **On April 23, 2024, Burlingame received notice that FEMA had approved the \$300,000 grant. These funds require a \$200,000 local match, which OneShoreline will provide from the \$4,000,000 we committed to the project in January 2022.**
- **This MOU is entered into pursuant to Cal OES and FEMA grant requirements to clearly outline the respective roles and responsibilities for Burlingame and OneShoreline so that OneShoreline may request reimbursement for activities carried out by its consultant team. Responsibilities outlined in the MOU:**
  - **OneShoreline: implement MBSRP Scope of Work; prepare all grant reporting and materials required; and ensure that contracts and procurement comply with federal requirements**
  - **Burlingame: Serve as grantee; review, approve, and submit all grant reporting and materials required after they are prepared by OneShoreline; and reimburse OneShoreline**

**RECOMMENDATION: Authorize the CEO to execute the MOU with the City of Burlingame, so OneShoreline will be able to begin requesting reimbursement.**

**Agenda Item 4E:** Authorize the CEO to execute Amendment 1 to Task Order 1 under the Master Services Agreement with Schaaf & Wheeler Consulting Civil Engineers to complete data collection, 30% design, and a DEIR for the MBSRP

---

- In March 2022, the OneShoreline Board authorized the CEO to execute an MSA, which utilizes subsequent Task Orders as the contractual vehicle for S&W to provide services on the MBSRP. No work under the MSA shall commence or be billable to OneShoreline without prior written authorization by way of a Task Order executed by the CEO, as authorized by the Board.
- Also in March 2022, the OneShoreline Board authorized the CEO to execute Task Order 1 to the MSA, which includes all work needed to complete 30% design and the CEQA Draft Environmental Impact Report (“EIR”) for a not-to-exceed amount of \$3,665,000. At this time, OneShoreline staff and S&W have identified a need to amend Task Order 1 to:
  - Adjust the scope to develop habitat plans as part of MBSRP design and add optional support
  - Increase the not-to-exceed amount by \$100,000 to account for these two scope adjustments, resulting in an updated Task Order 1 not-to-exceed amount of \$3,765,000.

**RECOMMENDATION:** Authorize the CEO to execute Amendment 1 to Task Order 1 to the MSA with S&W.

## Agenda Item 4E: Amendment 1 to Task Order 1 to complete data collection, 30% design, and a DEIR for the MBSRP

This updated contract not-to-exceed amount, along with the other MBSRP-related contracts, remains under the \$4.3M allocated from the MBSRP's current funding sources.

	\$4,000,000	Portion of State Coastal Conservancy Grant allocated for the MBSRP	
+	\$300,000	Grant from FEMA (BRIC 2020)	
-	\$3,765,000	S&W Task Order 1 NTE (data, 30% design, Draft EIR)	Proposed updated NTE under Agenda Item 4E
-	\$150,000	S&W Task Order 2 NTE (LEDPA analysis)	
-	\$159,070	Civic Edge Outreach Contract NTE	Proposed updated NTE under Agenda Item 4F
<hr/>			
	\$225,930	<i>Of this amount, \$150K is needed for 4 years of OneShoreline staff time on the MBSRP, leaving a \$75,930 contingency</i>	

**Agenda Item 4F:** Authorize the CEO to execute Amendment 1 to a contract with Civic Edge Consulting (CEC) for services to develop and support the implementation of an outreach plan for the MBSRP

---

- On May 20, 2024, OneShoreline's Board authorized the CEO to execute a contract with CEC to develop and support the implementation of an outreach plan for the Project for a not-to-exceed amount of \$100,880.
- Since contract execution, CEC has worked closely with OneShoreline staff to:
  - complete an Outreach Plan that was presented for Board and public feedback on August 26, 2024
  - implement the Outreach Plan, including soliciting feedback on updated draft project alternatives (Agenda Item 4C at today's meeting ) from city staff, environmental regulatory permitting agencies, technical experts, landowners, and the broader public.
- OneShoreline staff and CEC have identified a need for a contract amendment to:
  - Adjust the scope to add CEC outreach support for new draft project alternatives, and an optional tasks for CEC support during outreach on the preferred project alternative and for on-call support
  - Increase in the not-to-exceed amount by \$58,190 to account for these scope adjustments, resulting in an updated contract not-to-exceed amount of \$159,070.

**RECOMMENDATION:** Authorize the CEO to execute Amendment 1 to contract with CEC.

## Agenda Item 6 CEO's Report

- New staffing support for flood asset management and grants & communications
- Assembly Select Committee on Permitting Reform. October 16 hearing at:  
[www.assembly.ca.gov/media/assembly-select-committee-permitting-reform-20241016](http://www.assembly.ca.gov/media/assembly-select-committee-permitting-reform-20241016)





**Next two scheduled Board meetings**

**November 25, 2024 at 4:00 PM**

**December 16, 2024 at 4:00 PM**