

# Board of Directors Meeting

## San Mateo County Flood and Sea Level Rise Resiliency District

## AGENDA

**February 24, 2025**

**4:00 PM**

- 1. Roll Call**
- 2. Public Comment** Persons wishing to address the Board on District-related matters not on this Agenda, as well as items listed under Action to Approve the Consent Agenda, may speak for up to two minutes; comments on Agenda items shall be heard during that item for up to two minutes.
- 3. Action to Set the Agenda and Approve the Consent Agenda**
  - A. Approve the Minutes of the January 27, 2025 OneShoreline Board meeting
- 4. Regular Business**
  - A. Adopt Resolution 2025-02-24 authorizing OneShoreline's CEO, or designee(s), design approval authority for public works projects to retain design immunity protection afforded by state law
  - B. Update on San Francisquito Creek Joint Powers Authority activities and projects
  - C. Update on OneShoreline's Flood Early Warning System
  - D. Update on OneShoreline's project to expand participation by local jurisdictions in the FEMA National Flood Insurance Program Community Rating System
- 5. Chair's Report \***
- 6. CEO's Report \***
- 7. Board Member Reports and Items for a Future Agenda \***
- 8. Adjournment**

## **Agenda Item 4A**

### **Resolution 2025-02-24 providing the CEO, or designee(s), design approval authority for public works projects**

---

**As discussed at the 1/27/2025 Board meeting, OneShoreline has issued two RFPs for Colma Creek projects:**

- 1. Develop a watershed plan that evaluates and prioritizes opportunities for flood and stormwater management, habitat, and recreation which leverages land use policies and is resilient to future conditions**
- 2. Between Utah Ave. and San Mateo Ave., analyze the feasibility of potential projects, then complete design, construction packages, CEQA, and permitting of selected projects**

**State law provides public entities, including districts like OneShoreline, with design immunity for public works projects if the design was approved by the governing body or an employee authorized by that body.**

**Resolution 2025-02-24 retains OneShoreline design immunity in cases where the CEO, or designee(s), rather than the Board, approve plans and specifications, such as small projects or change orders during construction. While it does not alter the Board's discretionary authority to approve projects and funding, it would streamline project delivery and reduce administrative staff time.**

**RECOMMENDATION: Approve Resolution 2025-02-24**

## Agenda Item 4B: Update on the projects of the...

# San Francisquito Creek Joint Powers Authority

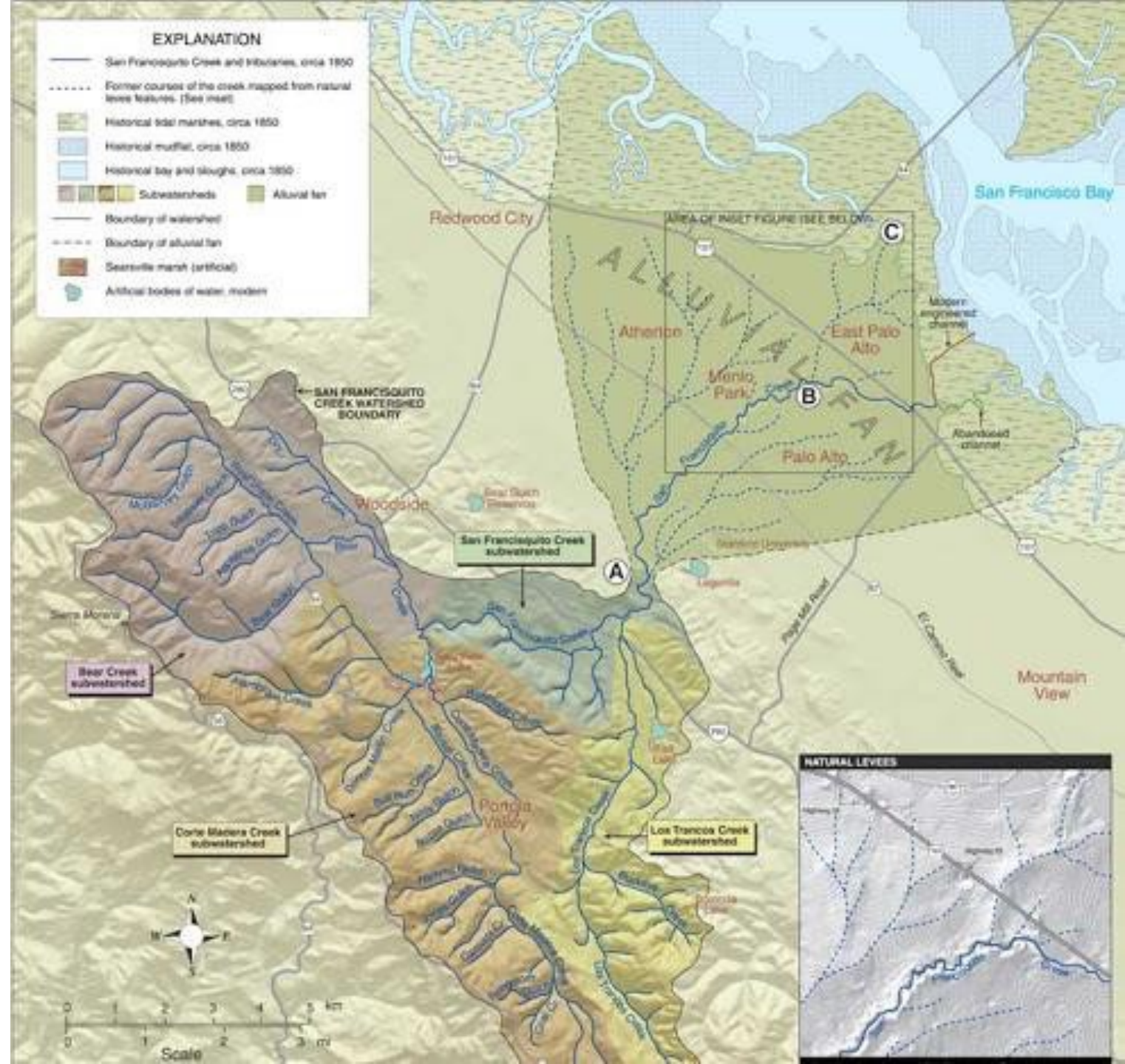
- Formed in 1999/2000 after the flooding of 1998
- Made up of 5 constituent organizations:
  - OneShoreline (San Mateo County Flood & SLR Resiliency District)
  - Valley Water
  - City of Palo Alto
  - City of East Palo Alto
  - City of Menlo Park
- Four full-time staff:
  - Margaret Bruce, Executive Director
  - Miyko Harris-Parker, Administrative and Finance Manager, Clerk of the Board
  - Tess Byler, Sr. Project Manager
  - Denean Ni, Project Manager



[SFCJPA.ORG](http://SFCJPA.ORG)

# The San Franciscoquito Creek Watershed

- The SFC watershed is about 45 square miles and crosses the San Andreas Fault zone, where loose and broken rock and soil is easily eroded and carried downstream.
- As the creek crosses the urbanized area of the valley – its course is at the high point on its alluvial fan.



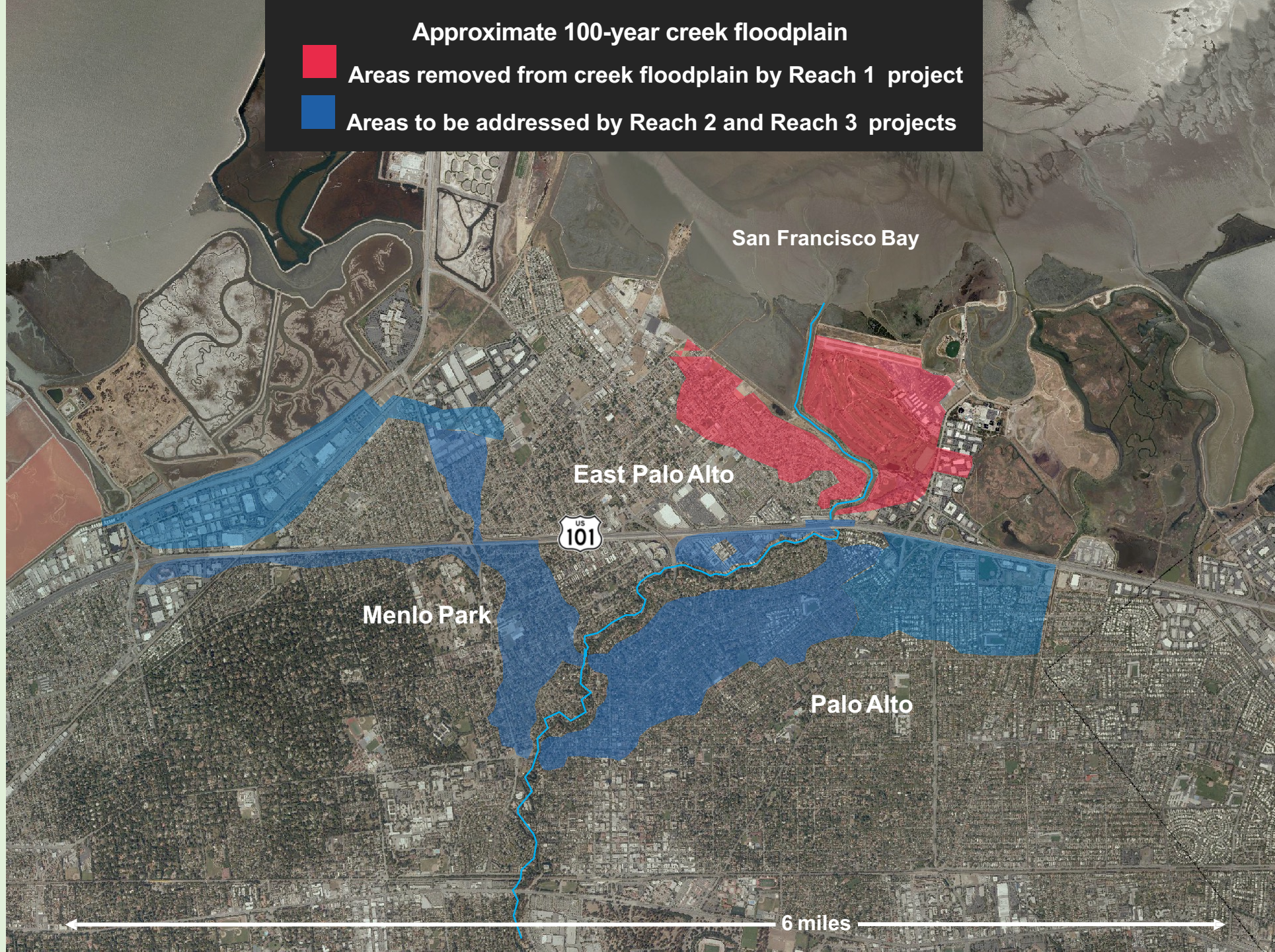
**Approximate 100-year creek floodplain**



**Areas removed from creek floodplain by Reach 1 project**



**Areas to be addressed by Reach 2 and Reach 3 projects**



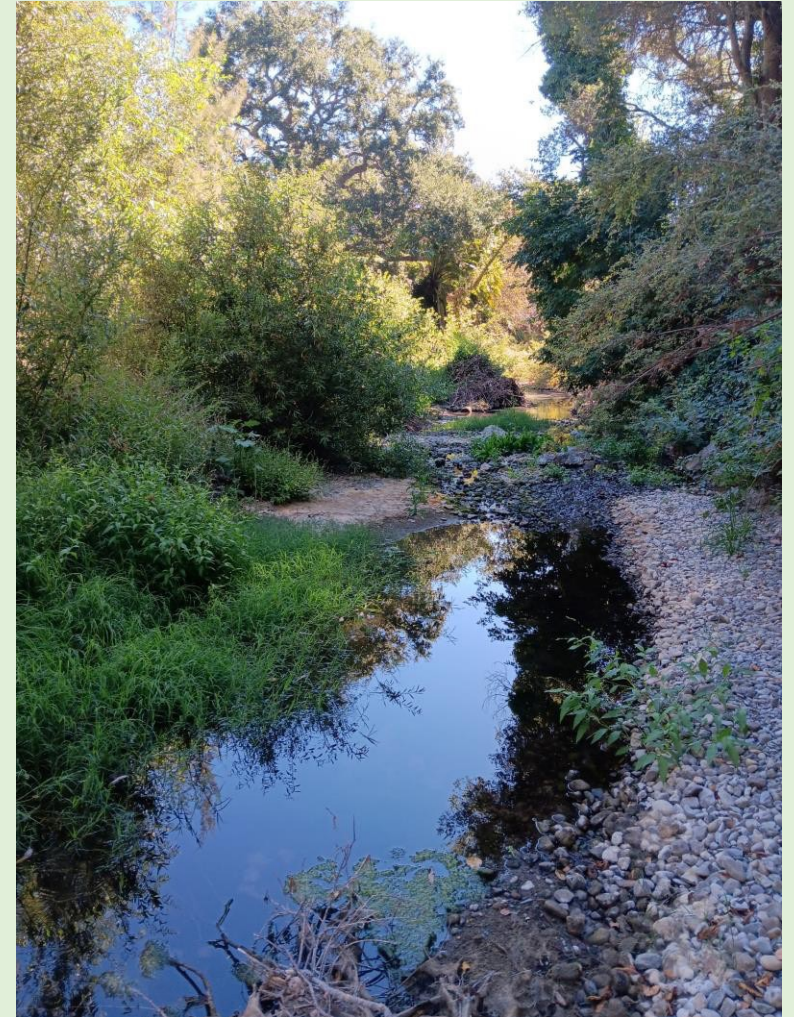
# Reach 1 (Downstream Project)

- Broke ground in 2016 – Completed in 2019
- 1 ½ Miles of widened channel, new floodwalls and levees, expanded trail
- Over 9000 cfs capacity – planned for 100yr storm, plus 3 ½ feet of sea level rise, plus freeboard
- 22 Acres of restored marsh between the levees and beyond Friendship Bridge
- Protects East Palo Alto and eastern Palo Alto directly. Protects Menlo Park and Palo Alto indirectly.



# Reach 2 (Urban Reach Project)

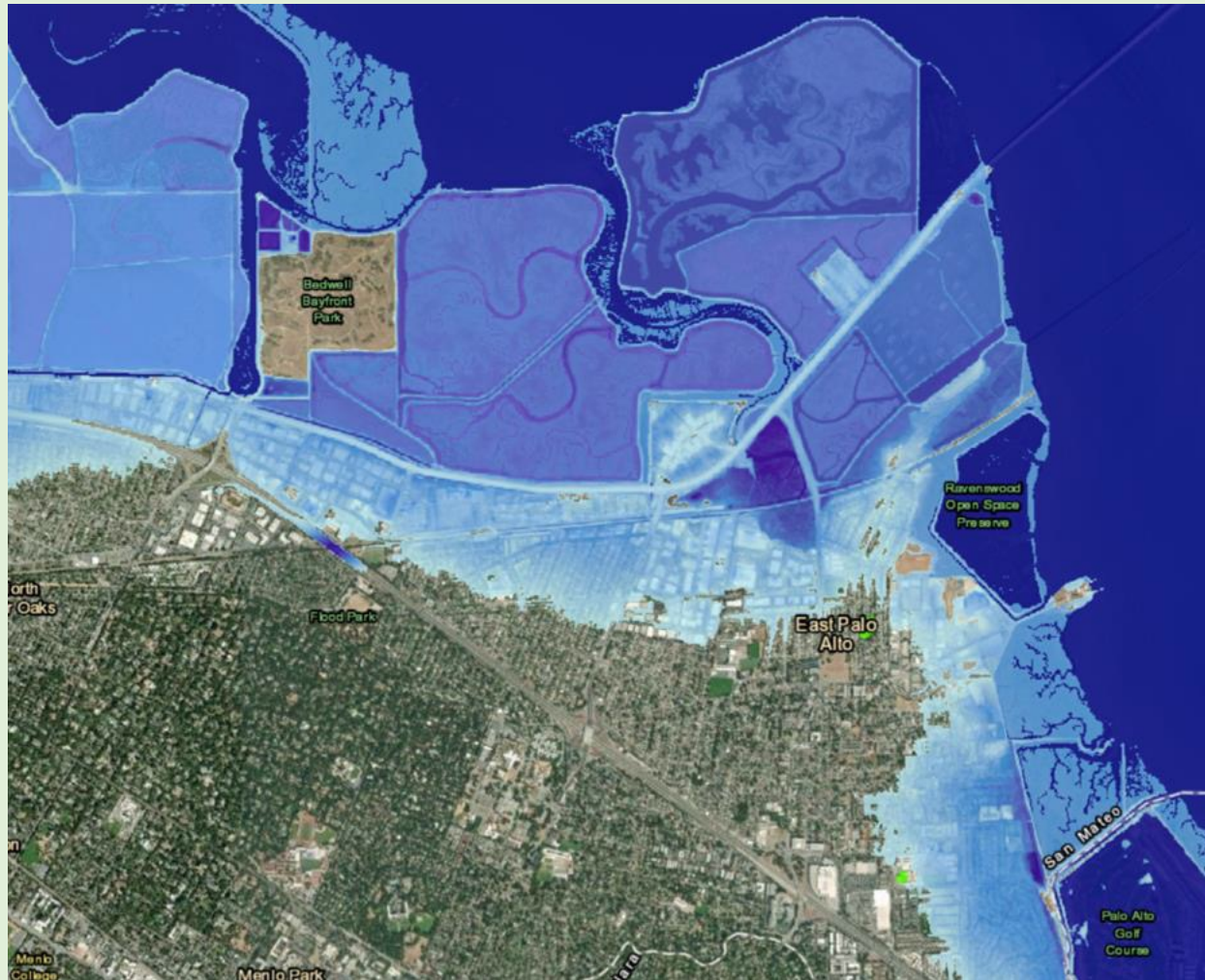
- Re-Evaluated Project after NYE flooding.
  - 25% less channel capacity than we knew before
  - Still aiming for “70-year flow” in-channel capacity
- SFCJPA May board meeting will include a presentation of the range of Project Alternatives, their costs, implementation order, and other attributes.
- Project Alternatives will include various combinations of channel widening, floodwalls, bridge modifications, and other possible interventions.
- After the SFCJPA Board has selected their preferred Project Alternative – by June - the SFCJPA members can begin project funding discussions.



Source: SFCJPA

# SAFER Bay Overview

Strategy to Advance Flood Protection, Ecosystems and Recreation



## Overarching Goals:

- Nature-based flood protection and restoration of former marshes
- Protect properties and critical infrastructure
- Increase recreational opportunities

Source: NOAA sea level rise viewer – 100-yr coastal flood & three feet of projected sea level rise

# Project Process and Schedule

- 7+ mile shoreline of East Palo Alto and Menlo Park.
- Consistent with Reach 1, planning for 10' of protection: SLR, 100yr storm, + FEMA freeboard.
- A complex project involving equity priority communities, major infrastructure, critical habitat for endangered species, urban renewal opportunities, recreation, historical and sacred lands, and many federal, state and local agencies.
- SFCJPA deeply engaged with local CBOs.
- Draft Programmatic EIR to be complete at end of 2025.

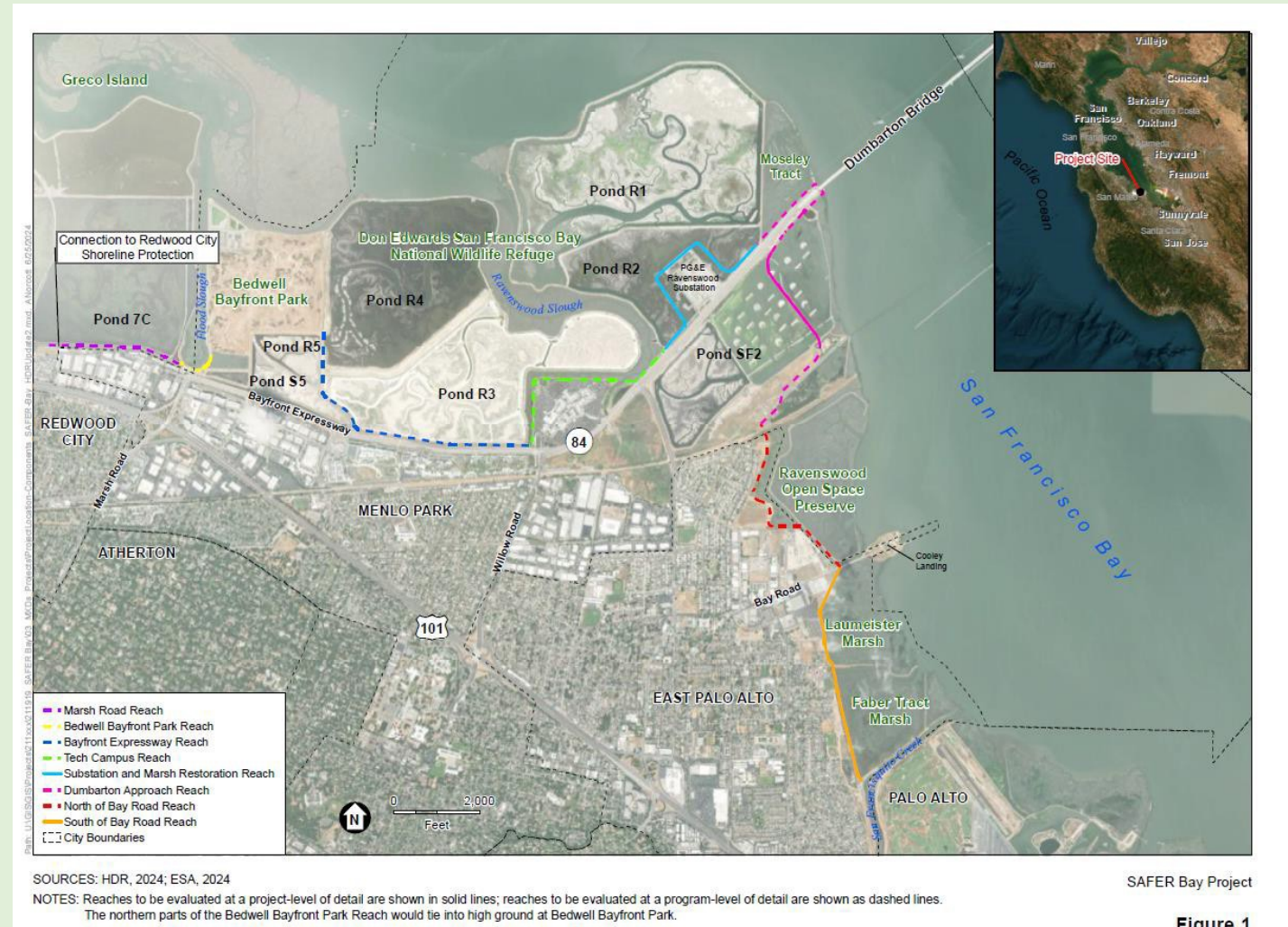
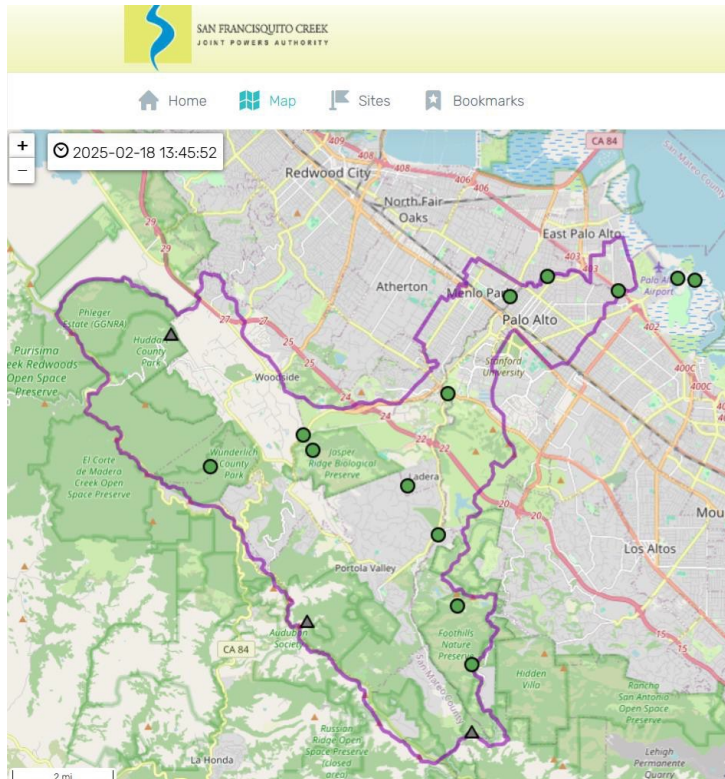


Figure 1

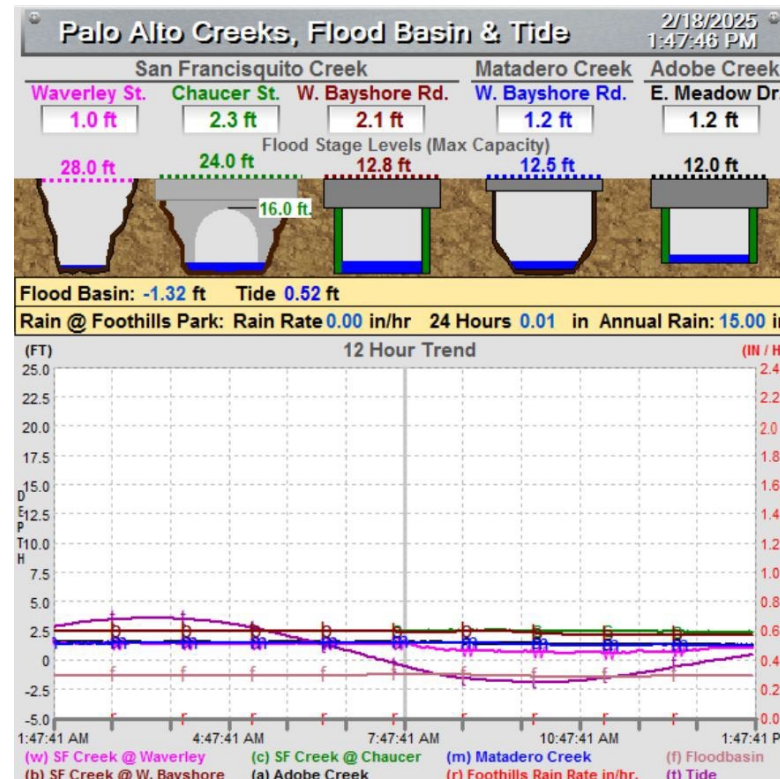
# SAFER Bay Project Funding

- SFCJPA – Leading on CEQA and project permits.
  - Grants from the Department of Water Resources and SFBRA totaling ~\$6M are enabling CEQA
- Menlo Park – FEMA BRIC Grant
  - \$50M in phases
  - Local match from PG&E (\$10M and Meta \$7M)
  - Menlo Park leading on BRIC implementation.
- East Palo Alto – CalOES HMGP Grant
  - \$17.5M in phases.
  - Local match from East Palo Alto (\$5M)
  - East Palo Alto leading on HMGP implementation.
- Community Advisory Committee
  - SFCJPA has engaged two local CBOs to lead outreach and coordinate community engagement.

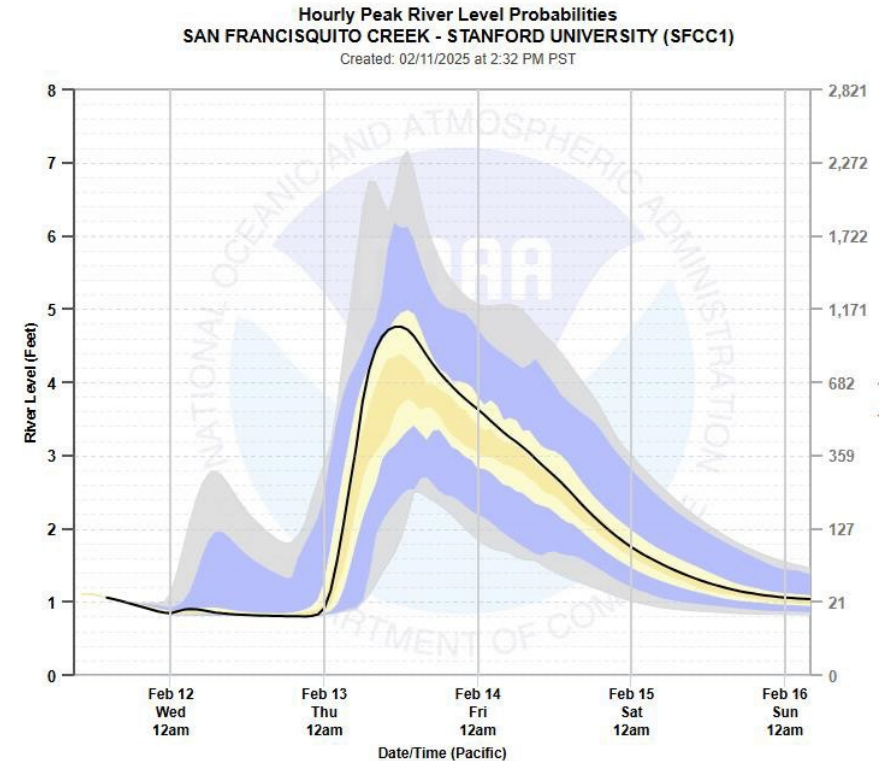
# Watershed Monitoring and Flood Early Warning Coordination with our Members



SFCJPA Website Rain and Streamflow Gages



City of Palo Alto Creek Monitor & Camera



NOAA California Nevada River Forecast Center

Thank you

Any Questions?

Feel free to contact me:

[mbruce@sfcjpa.org](mailto:mbruce@sfcjpa.org)



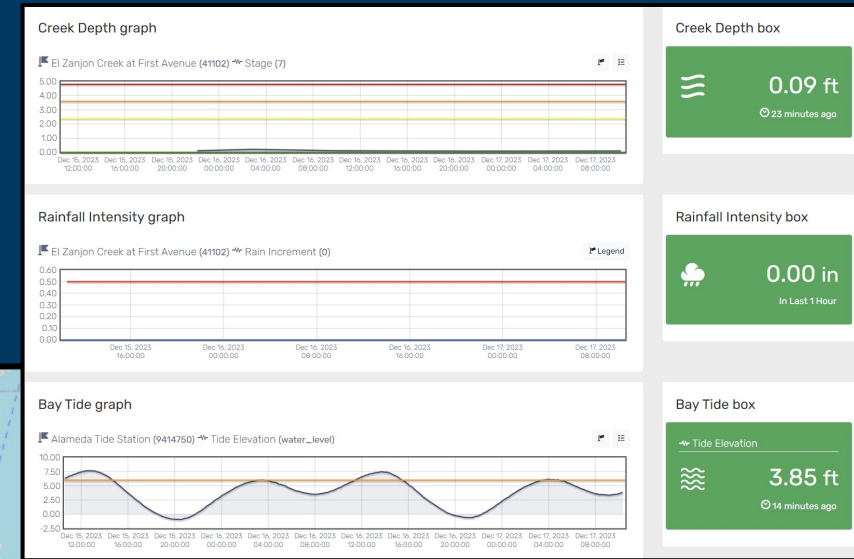
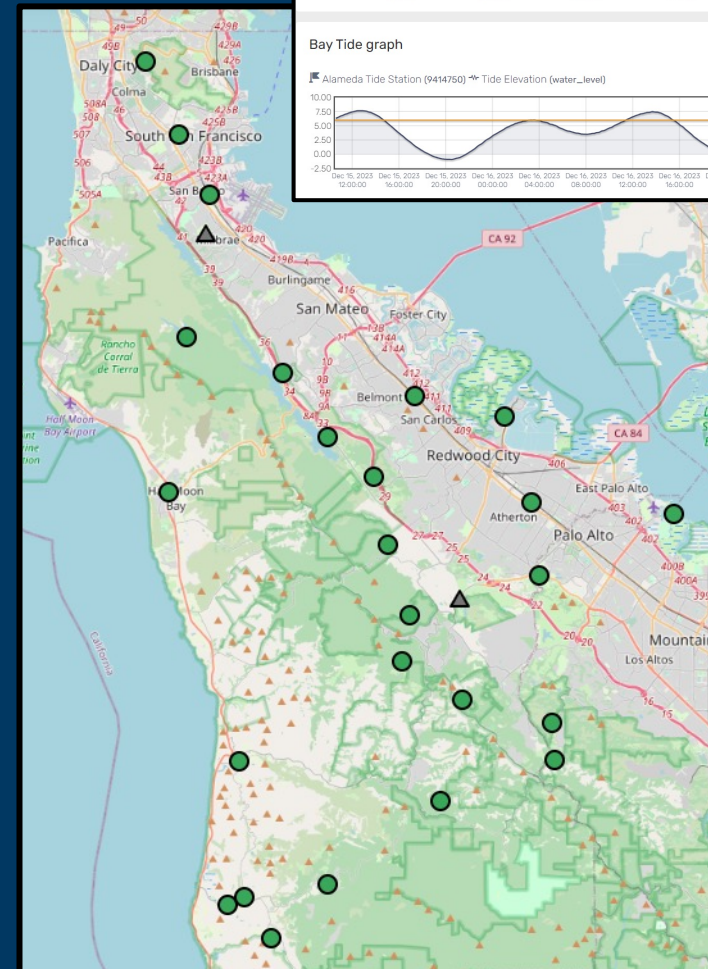
# Agenda Item 4C: Update on OneShoreline's Flood Early Warning System

OneShoreline operates, maintains, and is expanding a Flood Early Warning System – a countywide network of 32 stream, rain, and tide gauges connected online that:

- alerts agencies and public to flooding in real time
- collects data to inform the planning of projects

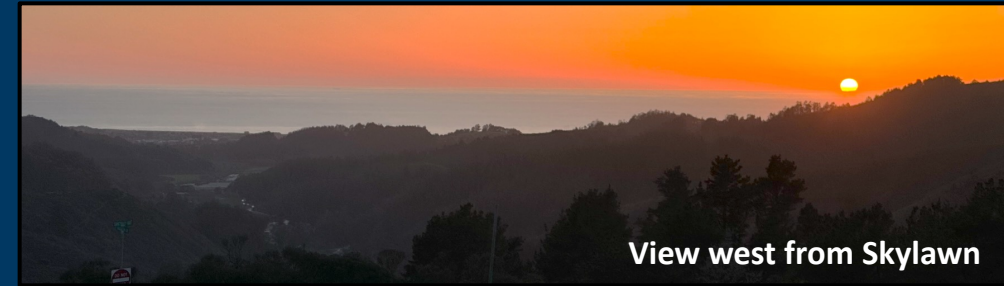
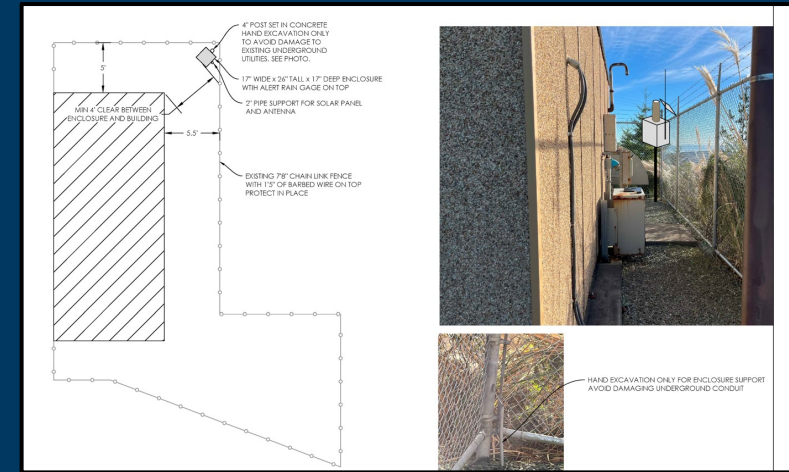
This winter, OneShoreline staff have begun to push alerts to emergency points of contact when the 75% and 100% thresholds are triggered on:

- Atherton Channel
- Belmont Creek
- Colma Creek
- San Bruno Creek



## Recently, the Flood Early Warning System effort has focused on:

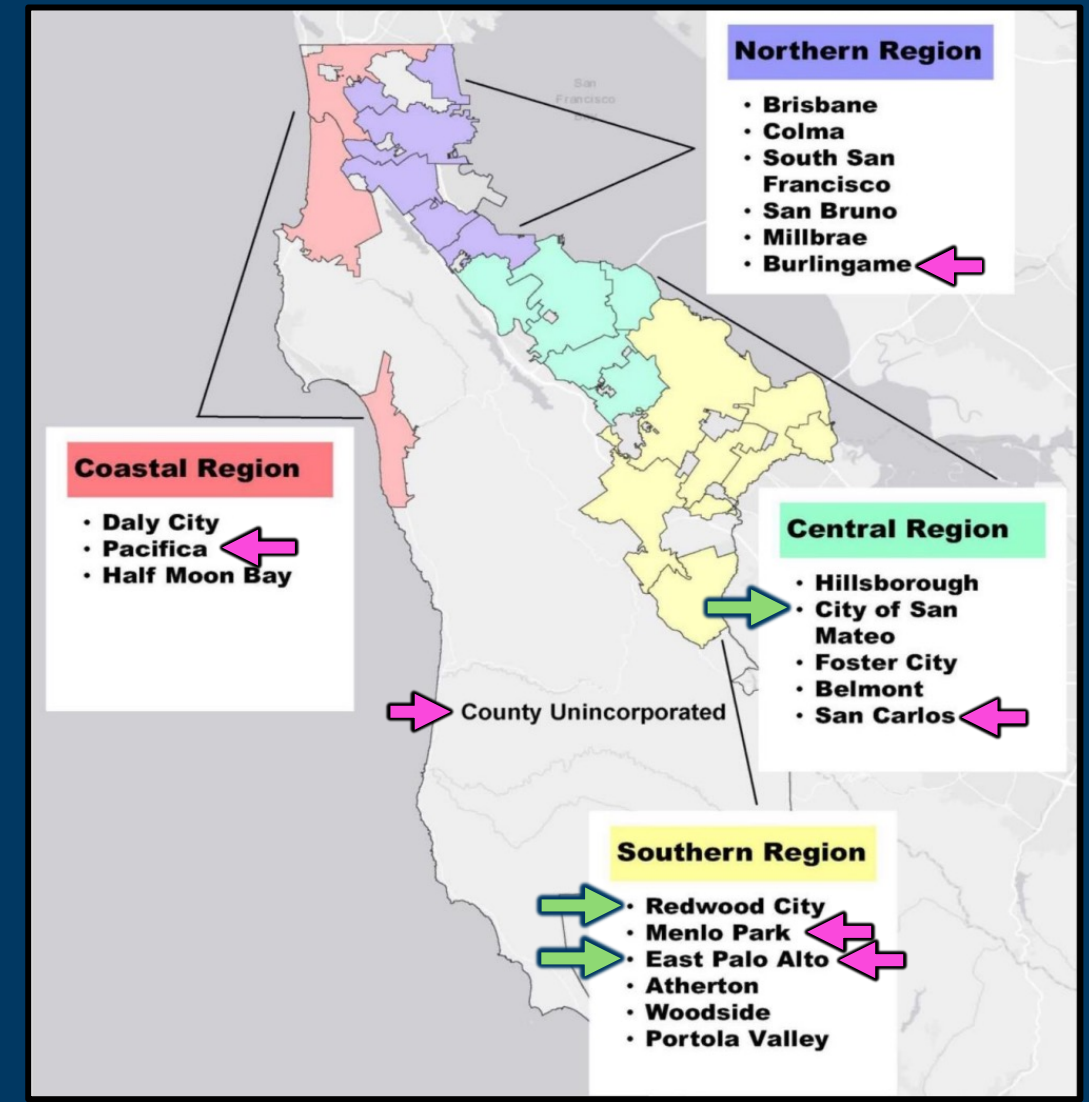
- Expanding the system to Pacific coast
  - Pescadero (installed in Fall 2023)
  - Skylawn Memorial Park & Pilarcitos Creek (in planning)
- Expanding the system to areas of the north county
  - San Bruno Mountain
  - Green Hills Country Club in Millbrae
- Future expansion possibilities: San Mateo Creek, Cordilleras Creek, Atherton Channel, Pacifica



## Agenda Item 4D: Update on OneShoreline's project to expand participation by local jurisdictions in FEMA's Community Rating System (CRS)

- CRS reduces the cost of flood insurance in communities that go beyond FEMA's minimum requirements
- 5 of 20 cities in San Mateo County, and the County itself, **currently participate**
- In August 2024, OneShoreline reached out to staff leaders at all 20 municipalities and County soliciting interest in joining, or maximizing the benefits of, CRS
- Aug.– Dec. 2024, OneShoreline and its CRS consultant met with the 11 jurisdictions that responded
- Currently, OneShoreline and its CRS consultant are assisting **2 cities** with their CRS application and **1 city** to improve its CRS rating to lower insurance premiums

## CRS participation by OneShoreline City Board Member Regions



# CEO's Report: Draft San Carlos Pulgas Creek Watershed Management Plan

**Pulgas Creek watershed drains approximately 3.5 square miles in San Carlos and portions of Belmont and unincorporated San Mateo County**

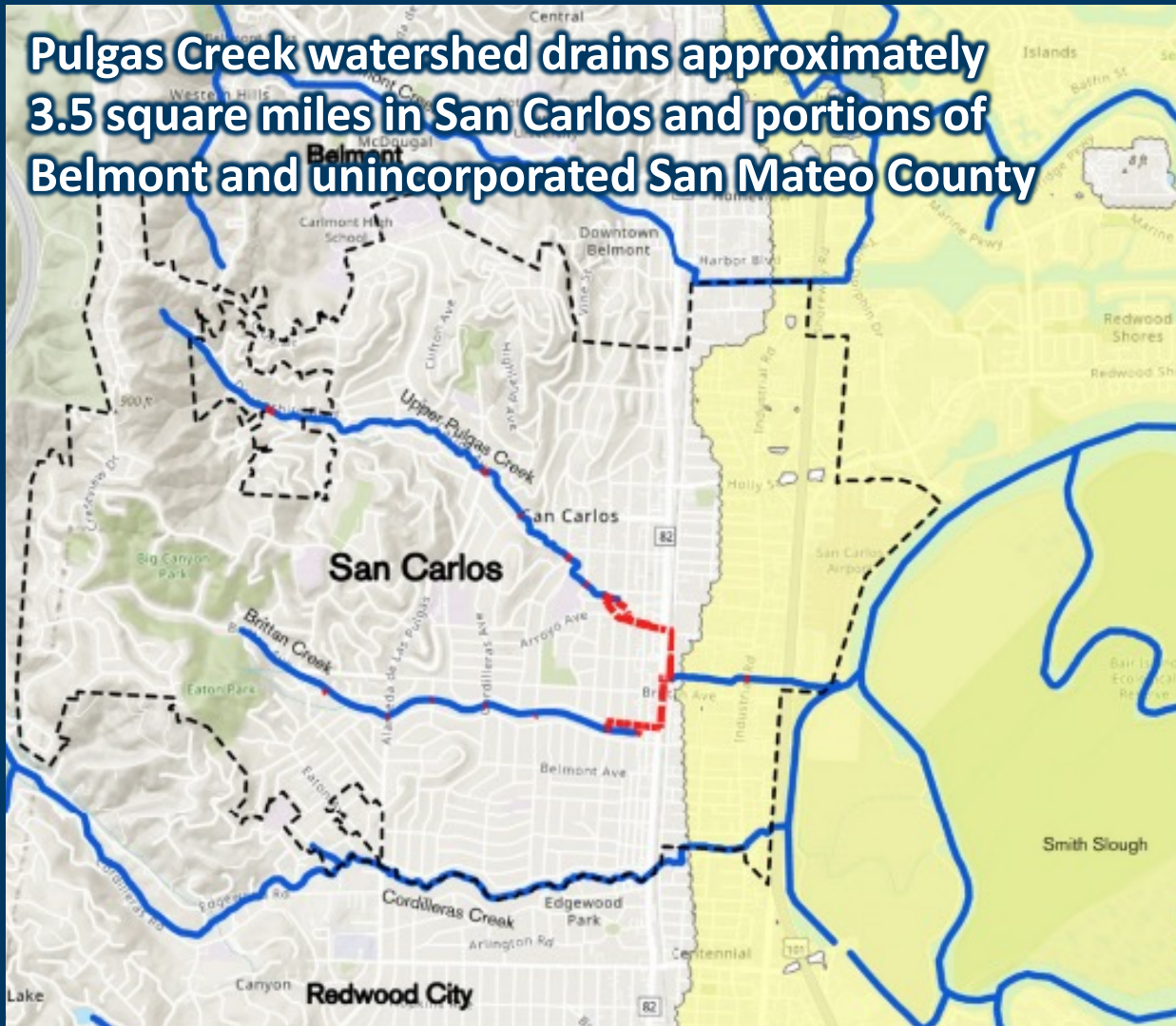


Figure 5.9 Sea Level Rise Overlay District Map Recommended by OneShoreline



- **Hazards:** sediment, trash and debris, insufficient stormwater capacity, groundwater, high tides, climate change
- **Goals:** Community, Multi-Beneficial, Policy, Resiliency, Maintenance, and Enhancement
- **Recommended Strategies:**
  - Community Partnership
  - Improvement Strategies (Projects)
  - Policy Changes



**Next two scheduled Board meetings:**

**March 24, 2025 at 4:00 PM**

**April 28, 2025 at 4:00 PM**