



COLMA CREEK CITIZENS ADVISORY COMMITTEE MEETING

Tuesday, March 11, 2025, at 3:00 pm

**IN-PERSON MEETING WITH
REMOTE PUBLIC PARTICIPATION AVAILABLE**

This meeting will be held **in-person** at:

Colma Town Hall, located at 1198 El Camino Real, Colma, CA, 94014

For members of the public wishing to attend remotely, please use the following link:

<https://onshoreline-org.zoom.us/j/85481376287>

or call 669-444-9171 (Meeting ID# 840 1564 5377)

AGENDA

- I. Roll Call
- II. Public Comment
- III. Action to Set the Agenda
 - a. Approve minutes of the December 10, 2024 meeting
- IV. Update on Colma Creek Flood Zone Projects and Maintenance Activities
- V. Update on OneShoreline Activities and Funding
- VI. Updates on Non-District Activities from Committee Participants
- VII. Adjournment

NEXT MEETING: Tuesday, June 10, 2025, 3:00 pm

San Mateo County Flood and Sea Level Rise Resiliency District
Colma Creek Citizens Advisory Committee

Draft Meeting Minutes
Tuesday, December 10, 2024

AGENDA

CALL TO ORDER

Chair Fisticaro called to order the regular meeting of the Colma Creek Citizens Advisory Committee at 3:00 pm on Tuesday, December 10, 2024; In-person and Zoom.

I. ROLL CALL

Members:

Present

Absent

Helen Fisticaro, Chair – Town of Colma

Marty Medina – City of San Bruno

Sue Vaterlaus – City of Pacifica

Roderick Daus-Magbual – City of Daly City

Mark Addiego – City of South San Francisco

Gail DeFries, Member at Large – City of Daly City

Ed Bortoli, Member at Large – City of South San Francisco

Ryan Mayfield, Member at Large – City of South San Francisco

Lisette Morales, Member at Large – City of South San Francisco

Staff:

Present

Absent

Len Materman – OneShoreline

Makena Wong – OneShoreline

Johnathan Perisho – OneShoreline

Errol Gabrielsen – OneShoreline

Michael Barber – County of San Mateo

Ann Stillman – County of San Mateo

Mark Chow – County of San Mateo

Brad Donohue – Town of Colma

Daniel Barros – Town of Colma

Jim Porter – Town of Colma

Richard Chiu – City of Daly City

Eunejune Kim – City of South San Francisco

Alex Henry – City of South San Francisco

Ken Anderson – City of South San Francisco

Kim Santos – City of South San Francisco

II. Public Comment

No comments from the public.

III. Action to Set the Agenda

- Approval of minutes of the September 10, 2024 meeting
Motion: Member Addiego, Second: Member DeFries

- Approval of 2025 Committee Meeting dates: March 11, June 10, September 9, December 9
Motion: Member DeFries, Second: Member Addiego

IV. Update on Colma Creek Flood Zone Projects And Maintenance Activities

- Johnathan Perisho provided updates
- Chair Fiscaro acknowledged Sheriff's Program no longer exists, so follow-up is needed to have trash clean-up support, comments followed by discussion of potential partners from Member Medina, Brad Donohue, and Johnathan Perisho
- Next likely clean-up event is Earth Day in April 2025

V. Upcoming Requests for Proposals

- Johnathan Perisho provided updates
- Chair Fiscaro requested that Brad Donohue and Eunejune Kim forward draft RFPs on to relevant DPW staff to review, and also commented on the 5-year permits expiring in 2026
- Comments were made on the San Mateo Avenue to Utah Avenue Planning and Design RFP by Chair Fiscaro, Eunejune Kim, Member Medina, Michael Barber, Brad Donohue, and Johnathan Perisho highlighting interests in focus on flood protection as well as notes on budget, funding, project area, community engagement, and recent flood impacts (only localized hotspots observed)
- Comments were made on the Watershed Plan RFP by Member Addiego, Member Mayfield, Eunejune Kim, Michael Barber, Chair Fiscaro, and Johnathan Perisho on opportunities to reduce creek inflows, permeable infrastructure strategies, planning policy, and example projects including the Oro Loma pilot project and Palo Alto Wastewater Treatment Plant
- Chair Fiscaro commented on the Project List

VI. Updates on Non-District Projects from Committee Participants

- Brad Donohue provided updates on the Colma Trash Capture Device Project; working on 30% design, looking to present at future meeting, and acknowledged working with OneShoreline

VII. ADJOURNMENT

The meeting adjourned at 3:53 p.m.

NEXT MEETING

Tuesday, March 11, 2025, 3:00 p.m.

Colma Creek Citizens Advisory Committee Meeting

Tuesday, March 11, 2025, 3:00 pm

Status of the Colma Creek Flood Zone Projects and Maintenance Activities

A reference map of all Colma Creek Flood Zone Projects and Maintenance Activities (Exhibit A), current Flood Zone Budget (Exhibit B), Flood Zone Project List (Exhibit C), and Quarterly Inspection Photos (Exhibit D) are enclosed. Questions on any of the material referenced below can be discussed at this Committee meeting.

Status of Activities: Projects and maintenance activities led by the San Mateo County Flood and Sea Level Rise Resiliency District (“OneShoreline”) or by the County Department of Public Works (“County”) on behalf of OneShoreline.

1. Routine Maintenance

- a. *Regulatory Permits (August 28, 2023 – March 14, 2026):* Permits are up to date and active. OneShoreline is working with County staff on scope for the next round of regulatory permits for maintenance activities.
 - U.S. Army Corps of Engineers (USACE) Nationwide Permit SPN-2016-00024, valid to March 14, 2026, unless the Permit is modified, suspended or revoked.
 - The San Francisco Bay Regional Water Quality Control Board (Regional Board) 401 Certification, No. 2 CW453659, has no expiration date but was issued under the USACE permit so is subject to the same expiration date of the Nationwide Permit valid dates listed above.
 - California Dept. of Fish & Wildlife (CDFW) Lake and Streambed Alteration Agreement, 1600-2015-0463-R3, (expires 12/31/26)
- b. *Maintenance Tools and Equipment:* No update.
- c. *Maintenance and Minor Repairs:* The quarterly inspection of the Colma Creek Flood Control Channel was performed on February 18, 2025, by staff from OneShoreline, the County, and City of South San Francisco. Photos documenting the inspection observations are included in Appendix B. The quarterly inspection also included an instream walk beginning at the Orange Avenue access ramp and continuing upstream to the BART box culvert at the S. San Francisco BART Station. County staff is in the process of compiling the 2025 Colma Creek maintenance activities list.

Illegal Dumping/Encampments: Illegal dumping and trash is still being observed in the channel up and downstream of Utah Avenue. Debris from inactive homeless encampments were observed under the S. Airport Boulevard and Produce Avenue bridges and on the Colma Creek service road in the vicinity. These sites continue to be a concern for impact to the channel and water quality. OneShoreline is exploring the use of contractors to perform trash pickup since the County Sheriff Work Program (SWP) is no longer available.
- d. *Maintenance Agreements:* OneShoreline has a current agreement with South San Francisco to lead or assist in the operation and maintenance of the Orange Memorial Park Stormwater System, vegetation, graffiti, vandalism, illegal dumping, illegal encampments, and minor maintenance in and around the Colma Creek Flood Channel in the City through June 30, 2026.

2. Mitigation Site Maintenance

Annual Maintenance Activities: The last coordinated cleanup event with City of South San Francisco was Coastal Clean Up Day, September 21, 2024. The County and OneShoreline continue to coordinate with local groups such as San Bruno Mountain Watch on potential future volunteer events focused on Colma Creek. Currently no other clean up days are scheduled.

Year	Trash Removed in cubic yards	Event Dates
2024	8	9/21
2024	2.5	8/31
2024	0.63	4/13
Total (2005-2024)	736.32	

3. Channel Discharge Pipe Repair/Replacement Project: U.S. Highway 101 to Utah Avenue

Granite Rock Construction (Contractor) contracted on behalf of OneShoreline by County Public Works completed the discharge culvert repairs between South Airport Boulevard and Utah Avenue on October 31, 2024 after a 16-day extension was obtained from permitting agencies. There are a few remaining punchlist items, including the installation of gaskets at the flap gates and inspection by closed-circuit television camera of the culverts, to be completed by Contractor before contract is closed.

4. Conditions Assessment

Structural & Geotechnical Assessment & Investigation: On October 2, 2024 Schaaf & Wheeler and their subconsultant Langan conducted two-dimension ground penetrating radar surveys. Staff is following up on a technical memorandum describing methods, procedures, results, and interpretation of the results.

5. Resilience Projects: San Mateo Avenue to Utah Avenue

Design & Permitting: OneShoreline is seeking planning and design services for the development of feasibility study and a biddable construction package (e.g. construction drawings, specifications) for improvements on reaches of Colma Creek between San Mateo Avenue and Utah Avenue, including the walls immediately upstream and downstream of the Produce Avenue bridge. A Request for Proposals was released January 7 and closed February 19.

6. Watershed Plan of Opportunities and Feasibility to Meet Long-term Multi-Benefit Resilience Objectives

Analysis & Plan Preparation: OneShoreline is seeking to secure services to model stormwater management opportunities and provide planning recommendations for Colma Creek. A Request for Proposals was released January 27, 2025 and closed March 7, 2025.

Non-District Projects: Major efforts in the Colma Creek Flood Zone that are not led by OneShoreline. Verbal updates from committee participants may be made during the regularly scheduled meeting.

		2017-18 through 2021-22 (Actual)*	2022-23 (Actual)	2023-24 (Actual)	2024-25 (Estimate)	2024-25 (Actual YTD)
Revenue						
	Taxes (Secured Property)		\$ 6,148,271	\$ 6,849,930	\$ 5,257,514	\$ 4,386,194
	Rent and Interest Income		\$ 362,046	\$ 1,668,118	\$ 321,022	\$ 852,777
	Inter-governmental Revenue		\$ 92,725	\$ 16,367	\$ 58,357	\$ 8,102
	State Grants		\$ 85,659	\$ -	\$ -	\$ -
	Total Revenue	\$ 25,368,202	\$ 6,688,700	\$ 8,534,415	\$ 5,636,893	\$ 5,247,073
General Administration of Flood Zone						
			\$ 109,470	\$ 127,453	\$ 1,868,110	\$ 308,169
Project Expenditures						
Activity Number	Activity Name					
	Routine Maintenance					
	a. Regulatory Permits				\$ -	\$ -
	b. Maintenance Tools and Equipment	\$ -	\$ -	\$ 238	\$ 5,000	\$ 121
	c. Maintenance & Minor Repairs	\$ 2,136,312	\$ 24,623	\$ 59,711	\$ 225,000	\$ 233,107
	d. Maintenance Agreements					
	City of South San Francisco	\$ 13,357	\$ -	\$ -	\$ 250,000	\$ -
	Town of Colma	\$ 58,256	\$ -	\$ -	\$ -	\$ -
	e. Project Administration	\$ 1,162,370	\$ 172,088	\$ 186,452	\$ 200,000	\$ 186,136
	Mitigation Site Maintenance					
	Annual Maintenance Activities	\$ 400,148	\$ 11,554	\$ 719	\$ 25,000	\$ 444
	Channel Discharge Pipe Repair/ Replacement					
	Design & Permitting	\$ 112,385	\$ 7,689	\$ 16,281	\$ 55,000	\$ 34,824
	Construction	\$ -	\$ 307,287	\$ 135,485	\$ 685,000	\$ 628,179
	Project Administration	\$ 132,154	\$ 32,132	\$ 49,032	\$ 220,000	\$ 128,995
	Conditions Assesment					
	Structural and Geotechnical Investigation				\$ 92,312	\$ 22,319
	Resilience Projects: San Mateo Ave to Utah Ave					
	Design & Permitting				\$ -	\$ -
	Watershed Plan					
	Analysis & Plan Preparation				\$ -	\$ -
	Prior Completed Activity Expenditures	\$ 5,319,990	\$ -	\$ -	\$ -	\$ -
	Total Project Expenditures/Estimates	\$ 10,266,329	\$ 555,373	\$ 447,918	\$ 1,757,312	\$ 1,234,125
Other Expenditures						
	General Liability Insurance		\$ 6,286	\$ 7,091	\$ 11,000	\$ 10,590
	Debt Service on Bond		\$ 1,499,125	\$ 1,498,875	\$ 1,496,625	\$ 1,496,625
	Total Other Expenditures		\$ 1,505,411	\$ 1,505,966	\$ 1,507,625	\$ 1,507,215
	Total Expenditures/Estimates	\$ 10,266,329	\$ 2,060,784	\$ 1,953,884	\$ 3,264,937	\$ 2,741,340
Estimated Fund Balance at End of Fiscal Year						
			\$ 34,864,652	\$ 41,143,496	\$ 41,556,001	\$ 44,061,734

*Expenditures before FY20-21 do not include staff time

Colma Creek Flood Zone Activity List

Activity Number	Activity Name	2017–18 through 2021–22 (Actual)*	2022–23 (Actual)	2023–24 (Actual)	2024–25 (Estimate)	2024–25 (Actual YTD)	Status	Timeline
1	Routine Maintenance						Developing scopes of work for 2025 maintenance activities and 5-year permits expiring 2026, Q1 walk Feb 18 no unhoused encampment activity observed	Ongoing
	a. Regulatory Permits				\$ -	\$ -		
	b. Maintenance Tools and Equipment	\$ -	\$ -	\$ 238	\$ 5,000	\$ 121		
	c. Maintenance & Minor Repairs	\$ 2,136,312	\$ 24,623	\$ 59,711	\$ 225,000	\$ 233,107		
	d. Maintenance Agreements							
	City of South San Francisco	\$ 13,357	\$ -	\$ -	\$ 250,000	\$ -		
	Town of Colma	\$ 58,256	\$ -	\$ -	\$ -	\$ -		
e. Project Administration	\$ 1,162,370	\$ 172,088	\$ 186,452	\$ 200,000				
	Activity Total					\$ 233,228		
2	Mitigation Site Maintenance						Stewardship events planned for May and September	Ongoing
	Annual Maintenance Activities	\$ 400,148	\$ 11,554	\$ 719	\$ 25,000	\$ 444		
	Activity Total					\$ 444		
3	Channel Discharge Pipe Repair/ Replacement						Punch list items include new rubber gaskets, two locations may require installation within seasonal work schedule	Punchlist Items by 2025 Q3
	Design & Permitting	\$ 112,385	\$ 7,689	\$ 16,281	\$ 55,000	\$ 34,824		
	Construction	\$ -	\$ 307,287	\$ 135,485	\$ 685,000	\$ 628,179		
	Project Administration	\$ 132,154	\$ 32,132	\$ 49,032	\$ 220,000	\$ 128,995		
	Activity Total					\$ 791,998		
4	Conditions Assesment						Two-dimension ground penetrating radar surveys completed and memo under review	Ongoing
	Structural and Geotechnical Investigation				\$ 92,312	\$ 22,319		
	Activity Total					\$ 22,319		
5	Resilience Projects: San Mateo Ave to Utah Ave						RFP for design services closed February 19, 2025. Interviews conducted March 5 and 7. Recommendations anticipated for April meeting of the District Governing Board.	RFP Closed 2025 Q1
	Design & Permitting				\$ -	\$ -		
	Activity Total					\$ -		
6	Watershed Plan						RFP for technical services closed March 7, 2025. Recommendations anticipated for April meeting of the District Governing Board.	RFP Closed 2025 Q1
	Analysis & Plan Preparation				\$ -	\$ -		
	Activity Total					\$ -		

**Colma Creek Flood Control Channel Maintenance Matrix
Monitoring Photos**

Survey Date: February 18, 2025

Mouth to Produce Avenue Maintenance Segment



Photos 1 & 2 – Top photo shows Colma Creek looking downstream from the Bay Trail pedestrian bridge. Bottom photo shows Colma Creek looking upstream from the pedestrian bridge.

Colma Creek Flood Control Channel Maintenance Matrix Monitoring Photos

Survey Date: February 18, 2025



Photos 3 & 4 – Top and bottom photos show access road and mitigation Site 2 between the Bay Trail pedestrian bridge and Utah Avenue. Trash and illegal dumping as well as one potentially occupied motorhome were observed along the service road. **No encampments observed along the banks of Colma Creek.**

Colma Creek Flood Control Channel Maintenance Matrix Monitoring Photos

Survey Date: February 18, 2025



Photos 5 & 6 – Top photo shows Colma Creek looking downstream from the Utah Avenue bridge. Bottom photo shows Colma Creek looking upstream from Utah Avenue.

Colma Creek Flood Control Channel Maintenance Matrix Monitoring Photos

Survey Date: February 18, 2025



Photos 7 & 8 – Top photo shows Colma Creek looking downstream towards the Utah Avenue bridge. Bottom photo shows Colma Creek looking upstream towards the S. Airport Blvd. bridge. **Trash from various sources including storm drains and illegal dumping continues to be an issue.**

Colma Creek Flood Control Channel Maintenance Matrix Monitoring Photos

Survey Date: February 18, 2025



Photos 9 & 10 – Top photo shows Colma Creek looking downstream from the S. Airport Blvd. bridge. Bottom photo shows Colma Creek looking upstream from S. Airport Blvd. facing the Hwy 101 crossing. **Trash from various sources including storm drains and illegal dumping continues to be an issue. No encampments observed under S. Airport Blvd..**

Colma Creek Flood Control Channel Maintenance Matrix Monitoring Photos

Survey Date: February 18, 2025



Photos 11 & 12 – Top photo shows Colma Creek looking upstream of the south end of S. Airport Blvd. bridge. Bottom photo shows Colma Creek looking upstream under the south end of S. Airport Blvd. bridge. Trash and illegal dumping related to homeless encampment activities under the S. Airport Blvd. bridge were visible in this vicinity. County recommends coordinating with City of SSF to remove the trash.

**Colma Creek Flood Control Channel Maintenance Matrix
Monitoring Photos**

Survey Date: February 18, 2025

Produce Avenue to the Dissipater Teeth Maintenance Segment



Photos 13 & 14 – Top photo shows Colma Creek looking downstream from the Produce Avenue bridge facing the Hwy 101 crossing. Bottom photo shows Colma Creek looking upstream from the Produce Avenue bridge.

Colma Creek Flood Control Channel Maintenance Matrix

Monitoring Photos

Survey Date: February 18, 2025



Photos 15 & 16 – Top photo shows damage on channel wall and partially blocked culvert outfall downstream from the Produce Avenue bridge facing the Hwy 101 crossing. Bottom photo shows void outside the channel wall. **County recommends continuing to monitor the area and contacting Caltrans to clear vegetation at the drain inlet.**

Colma Creek Flood Control Channel Maintenance Matrix Monitoring Photos

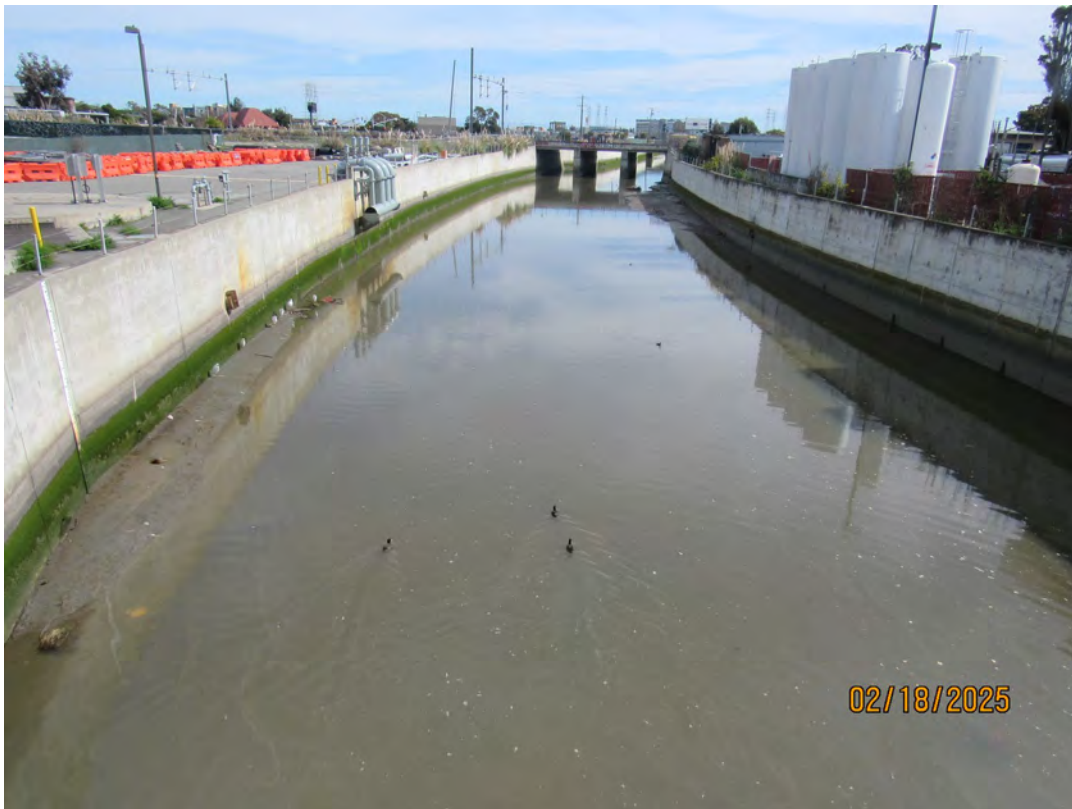
Survey Date: February 18, 2025



Photos 17 & 18 – Top photo shows Colma Creek looking downstream from the San Mateo Avenue bridge. Bottom photo shows Colma Creek looking upstream from the San Mateo Avenue bridge.

Colma Creek Flood Control Channel Maintenance Matrix Monitoring Photos

Survey Date: February 18, 2025



Photos 19 & 20 – Top photo shows Colma Creek looking upstream from Linden Avenue bridge. Bottom photo shows Colma Creek looking downstream from the Linden Avenue bridge.

Colma Creek Flood Control Channel Maintenance Matrix Monitoring Photos

Survey Date: February 18, 2025



Photos 21 & 22 – Top photo shows Colma Creek looking upstream from dissipater teeth. Bottom photo shows Colma Creek looking downstream from dissipater teeth at Spruce Avenue bridge.

**Colma Creek Flood Control Channel Maintenance Matrix
Monitoring Photos**

Survey Date: February 18, 2025

Dissipater Teeth to Old Channel Maintenance Segment



Photos 23 & 24 – Top photo shows minor debris accumulated at the dissipater teeth upstream of the Spruce Avenue bridge. Bottom photo shows trapezoidal wall separation at channel floor developing upstream of the Spruce Avenue bridge. This section was included in a geotechnical investigation to identify causes for the soil settlement. County recommends OneShoreline to continue monitoring the separation in future inspections.

**Colma Creek Flood Control Channel Maintenance Matrix
Monitoring Photos**

Survey Date: February 18, 2025



Photos 25 & 26 – Top photo shows Colma Creek looking downstream from the Orange Avenue bridge. Bottom photo shows Colma Creek looking upstream from Orange Avenue bridge.

Colma Creek Flood Control Channel Maintenance Matrix

Monitoring Photos

Survey Date: February 18, 2025



Photos 27 & 28 – Top photo shows Colma Creek looking upstream towards Centennial Way pedestrian bridge. Bottom photo shows Colma Creek looking downstream from Centennial Way pedestrian bridge. County recommends vegetation clearing in the wall joints and weepholes and outfalls in this section of channel to be included on the proposed list of maintenance activities for 2025.

Colma Creek Flood Control Channel Maintenance Matrix Monitoring Photos

Survey Date: February 18, 2025



Photos 29 & 30 – Top photo shows Colma Creek looking downstream at the Centennial Way pedestrian bridge. Bottom photo shows Colma Creek looking upstream from the Centennial Way pedestrian bridge.

Colma Creek Flood Control Channel Maintenance Matrix Monitoring Photos

Survey Date: February 18, 2025



Photos 31 & 32 – Top photo shows degraded channel floor downstream from the BART box culvert. **The 2023 condition assessment of the concrete channel in this section recommends continued monitoring of the defect in future inspections.** Bottom photo shows repaired culvert downstream from the SSF BART Station.

Colma Creek Flood Control Channel Maintenance Matrix Monitoring Photos

Survey Date: February 18, 2025



Photos 33 & 34 – Top photo shows Colma Creek looking downstream from channel section from the BART box culvert. Bottom photo shows Colma Creek looking downstream from the pedestrian trail near Costco at the box culvert.

Colma Creek Flood Control Channel Maintenance Matrix Monitoring Photos

Survey Date: February 18, 2025



Photos 35 & 36 – Top photo shows Colma Creek looking upstream from Costco pedestrian bridge. **Note that walls remain graffiti free in this section. However, the channel upstream and downstream of here continues to receive fresh graffiti.** Bottom photo shows cut in fence on south end of pedestrian bridge downstream. County also observed locks removed at downstream gate and recommends OneShoreline to coordinate with Colma staff to repair fence and replace lock for access.

Colma Creek Flood Control Channel Maintenance Matrix Monitoring Photos

Survey Date: February 18, 2025



Photos 37 & 38 – Top and bottom photo shows Colma Creek looking upstream at the Mission Road Box Culvert.

Colma Creek Flood Control Channel Maintenance Matrix

Monitoring Photos

Survey Date: February 18, 2025



Photos 39 & 40 – Top photo shows old Colma Creek channel downstream of the El Camino Real bridge at the Mission Road intersection. Bottom photo shows Colma Creek channel facing downstream looking at the diversion structure and junction with the Old Channel.