

# Board of Directors Meeting

## San Mateo County Flood and Sea Level Rise Resiliency District

### AGENDA

August 25, 2025

4:00 PM

1. **Roll Call**
2. **Public Comment** Persons wishing to address the Board on OneShoreline-related matters not on this Agenda, as well as items listed under Action to Approve the Consent Agenda, may speak for up to two minutes; comments on Agenda items shall be heard during that item for up to two minutes.
3. **Action to Set the Agenda and Approve the Consent Agenda**
  - A. Approve the Minutes of the June 23, 2025 OneShoreline Board meeting
  - B. Authorize the CEO to execute Amendment No. 3 to an Agreement with Balance Hydrologics, Inc. for services to expand, upgrade, and maintain OneShoreline's Flood Early Warning System
4. **Regular Business**
  - A. Presentation by staff from the Bay Conservation and Development Commission (BCDC) on BCDC guidelines for local jurisdictions to complete a Regional Shoreline Adaptation Plan (RSAP)
  - B. Adopt Resolution No. 2025-08-25 to accept a \$750,000 grant from the California Ocean Protection Council for OneShoreline to complete a Brisbane Shoreline Resilience Plan in compliance with BCDC RSAP guidelines
5. **Chair's Report \***
6. **CEO's Report \***
7. **Board Member Reports and Items for a Future Agenda \***
8. **Closed Session \*** Pursuant to Government Code Section 54957(b): Employee Evaluation, Title: CEO
9. **Adjournment**

## Agenda Item 4A: Presentation by BCDC staff on BCDC guidelines for local jurisdictions to complete a Regional Shoreline Adaptation Plan (RSAP)

The CEO's Report at the last Board meeting on June 23<sup>rd</sup> included brief information regarding:

- BCDC's RSAP outreach to local elected officials and city staff throughout the summer
- A \$750,000 grant to OneShoreline approved on June 10<sup>th</sup> by the CA Ocean Protection Council to complete an RSAP-compliant Brisbane Shoreline Resilience Plan (with Brisbane, SF, SSF, and Caltrans)
- A grant application that OneShoreline planned to submit to OPC early July to complete an RSAP-compliant plan for the county's 5 southern bayside cities: Belmont, San Carlos, Redwood City, Menlo Park, and East Palo Alto.



San Francisco Bay Conservation and Development Commission (BCDC)

## Agenda Item 4A

# Accelerating Local Adaptation through the Regional Shoreline Adaptation Plan (RSAP)

OneShoreline Board Meeting | August 25, 2025  
Jaclyn Perrin-Martinez, Climate Adaptation Planning Manager  
[Jaclyn.perrin-martinez@bcdc.ca.gov](mailto:Jaclyn.perrin-martinez@bcdc.ca.gov)

 Regional Shoreline  
Adaptation Plan  
An implementing project of BAY ADAPT



# Regional sea level rise risks

- **Flooding** of homes & businesses
- **Loss** of Baylands habitats
- **Damage** to infrastructure & utilities
- **Competition** for limited resources
- **Ineffective adaptation** from lack of coordinated planning
- **Economic costs** are immense\*
  - ~\$97 billion to adapt
  - \$230 billion assets at risk if no action is taken to adapt

\*Funding and Investment Framework, 2023, costs include assessed property values and select transportation infrastructure at 4.9' SLR

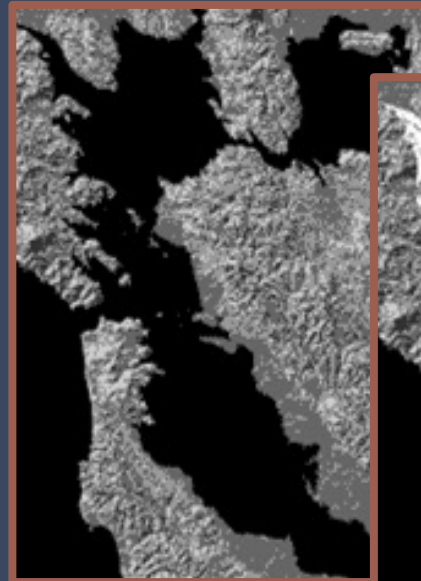


# BCDC and sea level rise

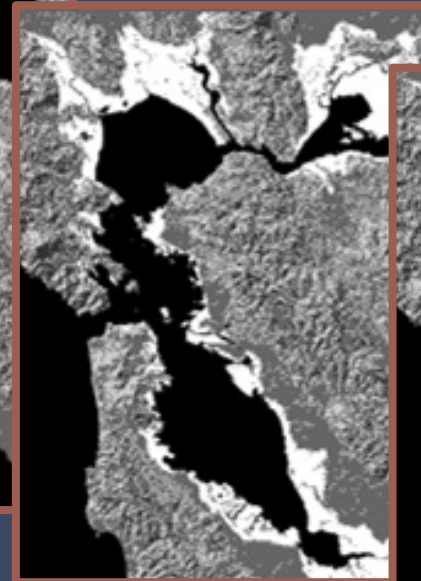


## Our Mission

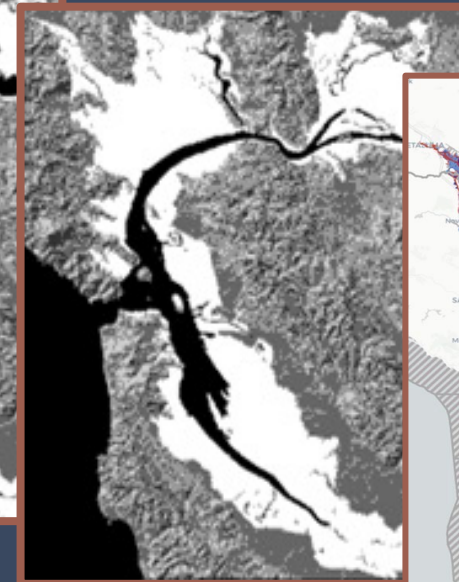
Protect and enhance San Francisco Bay and advance the Bay's responsible, productive, and equitable use for this and future generations as we face a changing climate and rising sea levels.



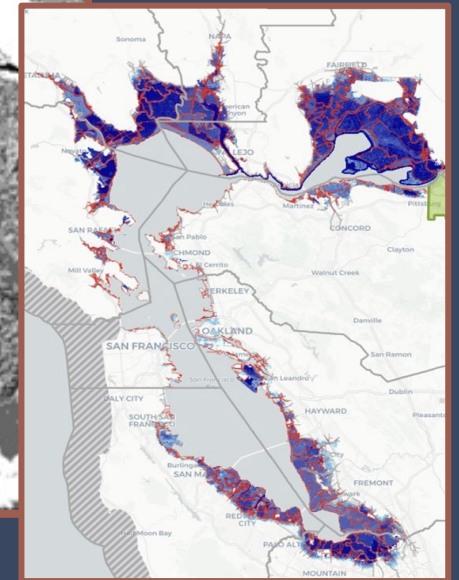
*The Bay in 1849*



*Bay fill in 1965*



*Estimate of fill that could be placed*



*Sea level rise of 6 feet by...*

# SB 272: Sea Level Rise Planning and Adaptation (Laird, 2023)\*

## For the Bay Area:

- Local governments are required to develop Subregional Shoreline Adaptation Plans (Plans) by Jan 1, 2034.
- BCDC required to create Guidelines for developing Plans → **within the Regional Shoreline Adaptation Plan**
- BCDC required to review and approve or deny Plans
- Adaptation projects in approved Plans are prioritized for State funding



*\*SB 272 is statewide legislation with requirements for local governments in the California Coastal Commission and BCDC's respective jurisdictions.*

# What is the Regional Shoreline Adaptation Plan?

- A regional plan to address rising sea levels in the Bay and guides the creation of Subregional Plans
  - ✓ One Bay Vision
  - ✓ Strategic Regional Priorities
  - ✓ **Guidelines** for Subregional Shoreline Adaptation Plans

## Regional Shoreline Adaptation Plan:

One Bay Vision,  
Strategic Regional Priorities,  
and Subregional Shoreline  
Adaptation Plan Guidelines

December 2024



San Francisco  
Bay Conservation  
and Development  
Commission (BCDC)



OCEAN  
PROTECTION  
COUNCIL



Coastal  
Conservancy



Regional Shoreline  
Adaptation Plan  
An implementing project of BAY ADAPT



# RSAP Subregional Plan Guidelines

## Plan Element Requirements

- A. Planning Process
- B. Existing Conditions
- C. Vulnerability Assessment
- D. Adaptation Strategies and Pathways
- E. Land Use and Policy Plan
- F. Project Implementation and Funding
- G. Project List

## Minimum Standards



Coastal Flood Hazards  
and Sea Level Rise  
Scenarios



Minimum Categories  
and Assets



Equity Assessment



Adaptation Strategy  
Standards

# Subregional Plans

Locally-created sea level rise adaptation plans that follow the RSAP Guidelines; designed to be flexible.

## Benefits include:

- ✓ Consistent planning assumptions with neighbors
- ✓ Guidance on adaptation steps and outcomes
- ✓ Flexibility to build on existing resources
- ✓ Access to technical assistance support and data
- ✓ Priority funding upon plan approval



Photo by Karl Nielson.

Regional Shoreline  
Adaptation Plan  
An implementing project of BAY ADAPT



Who is required to create a Subregional Plan?

Counties with BCDC Jurisdiction	Cities with BCDC Jurisdiction or impacted by short-term coastal hazards	
Alameda	Alameda Albany Berkeley Emeryville Fremont	Hayward Newark Oakland San Leandro Union City
Contra Costa	Concord* El Cerrito* Hercules Martinez	Pinole Pittsburg* Pleasant Hill* Richmond
Marin	Belvedere Corte Madera Larkspur Mill Valley Novato	Ross* San Rafael Sausalito Tiburon
Napa	American Canyon	Napa*
San Francisco	San Francisco	
San Mateo	Belmont Brisbane Burlingame East Palo Alto Foster City Menlo Park	Millbrae Redwood City San Bruno* San Carlos San Mateo South San Francisco
Santa Clara	Milpitas* Mountain View Palo Alto	San Jose Santa Clara* Sunnyvale
Solano	Benicia Fairfield*	Suisun City Vallejo
Sonoma	Petaluma	

# BCDC's role and resources



[BCDC website](#)



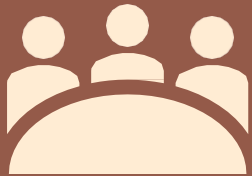
[RSAP Atlas](#)



[Plan resources](#)



[Subregional liaisons](#)



[Consultation meetings](#)



[Tracking Plan Progress](#)



# Stay engaged with us this summer!

## RSAP Webinar Series

**#1 Introducing the  
Regional Shoreline  
Adaptation Plan**  
[View the recording!](#)

**#2 Creating Subregional  
Plans: Local Government  
Primer**  
[View the recording!](#)

**#3 The RSAP Atlas: Data  
and Mapping Tool for  
Planning**  
[View the recording!](#)

## Up next

**September 17 1-2pm**  
**#4 Getting Started: Engage, Fund,  
and Initiate Plans**  
Register to attend →



[www.bcdc.ca.gov/  
events/](http://www.bcdc.ca.gov/events/)

Connect with your liaison (our team is growing)!



**Jackie Perrin-Martinez**, Climate Adaptation Planning Manager  
email: [jaclyn.perrin-martinez@bccdc.ca.gov](mailto:jaclyn.perrin-martinez@bccdc.ca.gov)



**Danielle Flanagan**, Climate Adaptation Planning Specialist  
email: [Danielle.Flanagan@bccdc.ca.gov](mailto:Danielle.Flanagan@bccdc.ca.gov)

**Agenda Item 4B: Adopt Resolution No. 2025-08-25 to accept a \$750,000 grant from the California Ocean Protection Council for OneShoreline to complete a Brisbane Shoreline Resilience Plan in compliance with BCDC RSAP guidelines**

In December 2024, OneShoreline submitted an application to OPC’s Senate Bill 1 Sea Level Rise Adaptation Planning Grant Program to develop the Brisbane Shoreline Resilience Plan aligned with BCDC’s RSAP. This initial application was not approved.

Between January-March 2025 OneShoreline worked with OPC and BCDC to revise this application, which was submitted in March 2025 and approved in June 2025.

<b>Geographic extent</b>	Brisbane Shoreline, from the border of San Francisco through the Brisbane Marina.
<b>OPC Grant</b>	\$750,000
<b>Local Match</b>	\$200,000 (Measure K)
<b>Project Duration</b>	Two years
<b>Project partners</b>	City of Brisbane, Caltrans, City and County of San Francisco, City of South San Francisco

To receive the grant, OneShoreline must send a Board-approved resolution to OPC.



## Agenda Item 4B: Resolution 2025-08-25 to accept a \$750,000 OPC grant for the Brisbane Shoreline Resilience Plan

The grant will fund the following RSAP-required activities:

- Conducting equity-based community outreach
- Refining the County's 2018 vulnerability assessment
- Prioritizing sea level rise adaptation needs
- Developing adaptation strategies and pathways
- Identifying priority projects, land use and policy measures, and an implementation plan and funding strategy
- Presenting the final plan for Brisbane City Council approval

**RECOMMENDED BOARD ACTION: Adopt Resolution 2025-08-25 to accept a \$750,000 OPC grant for the Brisbane Shoreline Resilience Plan.**

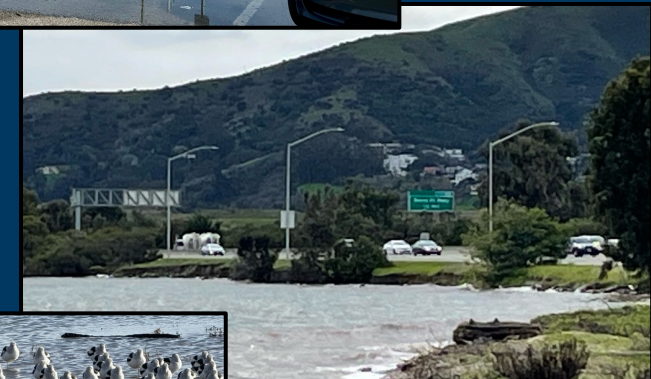


Image: All Trails/Doug McGlean


# Agenda Item 6

## CEO's Report

On July 31, OneShoreline paid off its outstanding debt – \$12.5 million in bonds secured before OneShoreline was established for Colma Creek construction.

SAN MATEO COUNTY FLOOD & SEA LEVEL RISE RESILIENCY DISTRICT

CONTACT | SEARCH




ABOUT | WHAT WE DO | NEWS & RESOURCES | MEETINGS & AGENDAS

## San Bruno Creek Resilience Project RFP

The San Mateo County Flood and Sea Level Rise Resiliency District (also known as OneShoreline) is seeking proposals from qualified consulting teams to provide integrated planning and engineering services for the San Bruno Creek Resilience Project. This effort will produce a technically sound, community-informed, multi-benefit flood resilience plan and advance a priority "first project" to 30% design, complete an draft environmental impact report, and achieve grant readiness.

Please submit electronic copy of the proposal by:

~~August 25, 2025, 3:00 PM Pacific Time, to:~~

**September 5, 2025, 5:00 PM Pacific Time, to:** 

**Summer Bundy, Director of Project Management**  
San Mateo County Flood and Sea Level Rise Resiliency District  
Projects@OneShoreline.org  
Subject line: *San Bruno Creek RFP*

Questions submitted by email to Projects@OneShoreline.org with the subject line "San Bruno Creek RFP Questions" by **August 12, 2025 at 5:00 PM** will be answered by August 15 at 5:00 PM.

**Documents**

[San Bruno Creek Resilience Project RFP \(July 23, 2025\)](#)



**Upcoming Board meetings:**

**September 22, 2025 at 4:00 PM**

**October 27, 2025 at 4:00 PM**