

BRISBANE LIVING SHORELINE PROJECT - PHASE 1



OVERVIEW

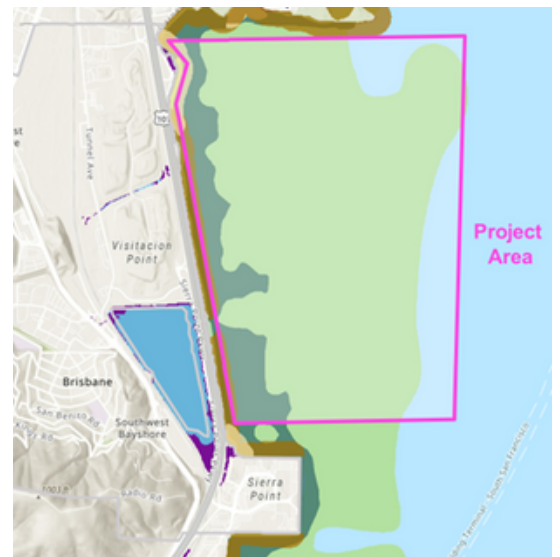
The Brisbane Living Shoreline Project is a phased, multi-benefit effort to **restore at least 100 acres of eelgrass and 50 acres of oyster habitat elements along the Brisbane shoreline**. Phase 1—the focus of OneShoreline’s Measure AA proposal submitted in October 2025—includes baseline data collection, living shoreline design, and community engagement.

PROJECT CONTEXT

Today, the Brisbane shoreline currently lacks eelgrass and has only limited oyster settlement. According to the San Francisco Estuary Institute (SFEI), the Brisbane shoreline is the only stretch of the Bay shoreline suitable for eelgrass and oyster habitat restoration in San Mateo County (green areas in the map). Because the area is very exposed, restored eelgrass would benefit from protection by sequentially placed oyster habitat elements from the deepest to shallowest depths in the project area.

The aim is to create conditions that can lead to establishment of eelgrass in smaller areas (e.g., 20 half-acres per year over several years of project implementation), which over time will spread to cover much larger areas. Together, the eelgrass and oyster habitats will form a living shoreline that reduces wave energy and storm surge impacts, helping to mitigate coastal flooding.

Adopted as a project by the San Francisco Bay Joint Venture.



PROJECT PARTNERS

Project Lead: OneShoreline

Municipal partner: City of Brisbane

Scientific partners: Andy Chang (Smithsonian Environmental Research Center, SERC), Matt Ferner (San Francisco Bay National Estuarine Research Reserve, NERR), Kathy Boyer (Estuary & Ocean Science Center, EOS) at San Francisco State University (SFSU)

Community partners: Literacy for Environmental Justice, Bay Area community colleges (through the Educational Pathways Project led by EOS)

ESTIMATED TIMELINE AND BUDGET:

The project is estimated to take 3 years. Our funding request to the Restoration Authority is \$962,500; OneShoreline will provide \$77,000 in matching funds (project total: \$1,039,500).



The purpose of Phase 1 is to significantly advance project concept design, implementation planning, CEQA and permitting, and community support.

PHASE 1 SCOPE OF WORK

The purpose of Phase 1 is to significantly advance project concept design, implementation planning, CEQA and permitting, and community support. The following major efforts are proposed in Phase 1:

- Baseline data collection
- Community Engagement
- Alternatives development and analysis
- Project selection
- Concept design
- Regulatory engagement
- CEQA documentation and draft permit applications
- Implementation planning

ADDITIONAL PROJECT BENEFITS:

Improved water quality: Native oysters can filter large volumes of Bay water, while eelgrass meadows enhance water clarity, increase oxygen production, and support nutrient cycling.

Model for flood-prone areas: This project may serve as the Bay's first demonstration of the flood mitigation benefits of living shorelines, providing a precedent for nature-based solutions in shoreline resilience planning.

Education and workforce development: In partnership with Literacy for Environmental Justice and community colleges in Bay Area, the project will engage students in stewardship activities, offering hands-on experience with shoreline resilience projects and preparing them for future green workforce opportunities.

WHY OYSTERS?

The history of oysters in Brisbane spans from ancestral Ohlone shores, where oysters held nutritional and cultural importance, to 19th-century commercial harvesting that nearly wiped out native populations. Today, native Olympia oysters (*Ostrea lurida*) are the focus of regional restoration efforts that improve water quality and support coastal biodiversity. Brisbane's shoreline is the only reach in San Mateo County identified as suitable for reef restoration, making it a priority for OneShoreline's nature-based pilot projects.

