



Brisbane Living Shoreline Project

Presentation to:
San Francisco Bay Joint Venture
Conservation Committee

November 4, 2025

Presenters

Summer Bundy

OneShoreline, Director of Projects

Stephanie Lau

OneShoreline, Communications & Grants

Science Partners

Andy Chang

Smithsonian Environmental Research Center

Matt Ferner

San Francisco National Estuarine Reserve

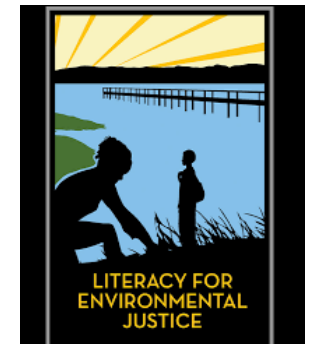
Kathy Boyer

SFSU Estuary & Ocean Science Center



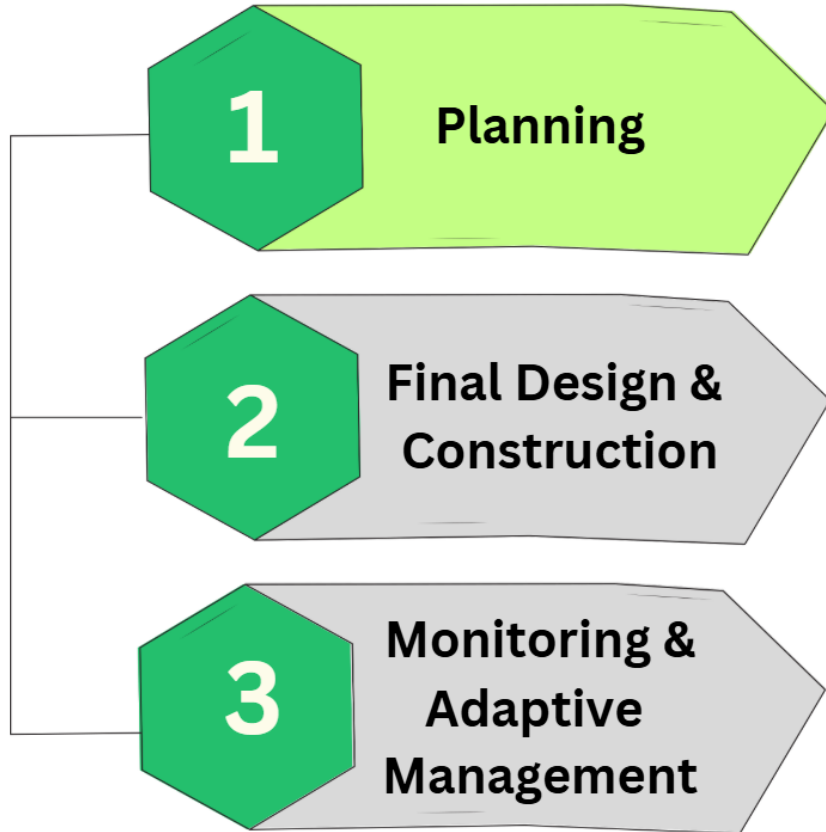
Project partners

- **Lead agency:** OneShoreline
- **Municipal partner:** City of Brisbane
- **Scientific partners:**
 - Andy Chang (Smithsonian Environmental Research Center) - *Oysters*
 - Matt Ferner (SF Bay National Estuarine Research Reserve) – *Physical processes*
 - Kathy Boyer (Estuary & Ocean Science Center) – *Eelgrass*
- **Community partners:**
 - Literacy for Environmental Justice
 - Bay Area community colleges (through the EOS Educational Pathways Project)



Brisbane Living Shoreline Project

Adoption Phase



Location

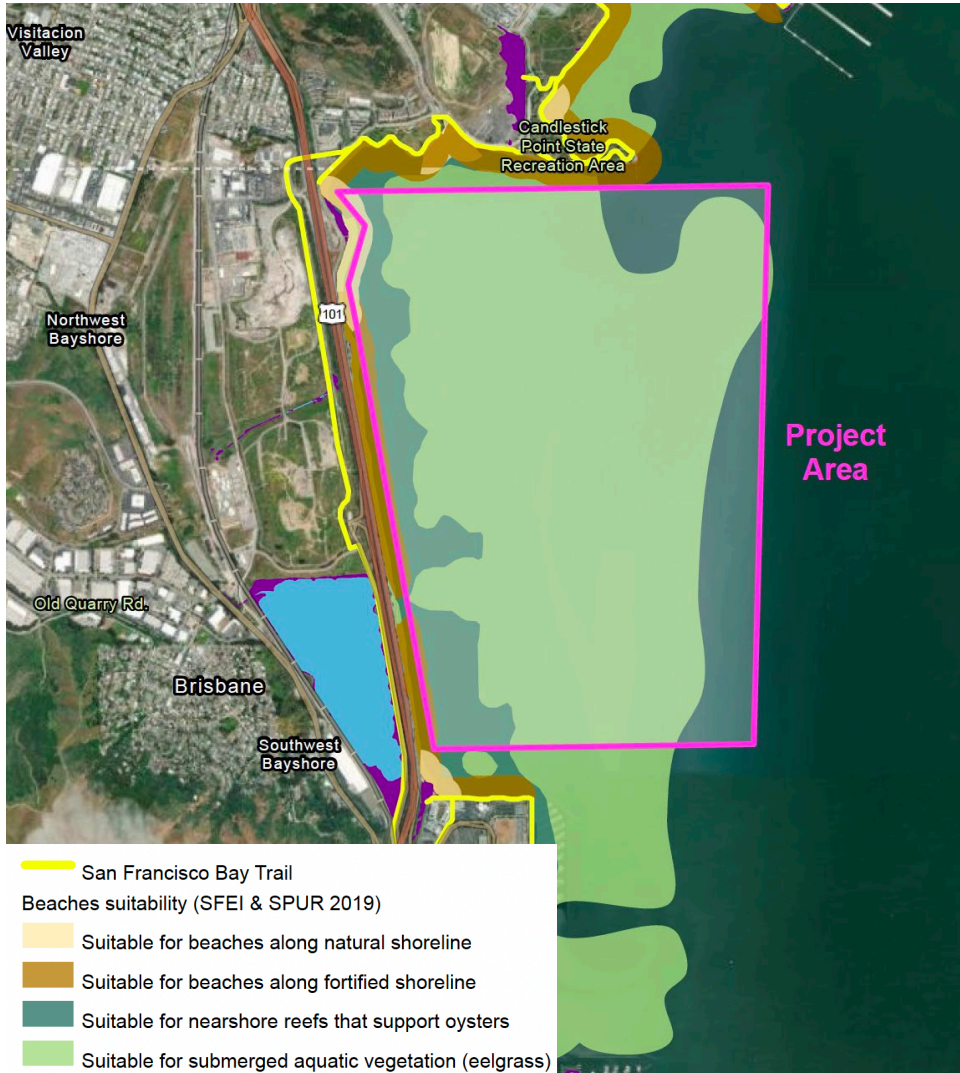


Goals



- 100+ acres of eelgrass
- 50 acres of oyster habitat elements
- Ecological restoration benefits to larger foodweb

Existing Conditions



Phase 1 Project Components

Baseline Data Collection	Biological, physical, and geotechnical surveys to define site conditions (oysters, eelgrass, birds, bathymetry, sediment, hydrodynamics).
Design & Alternatives Development	Create and refine restoration strategies; advance preferred concept to ~30 % design.
Regulatory & Environmental Review	CEQA documentation, early BRRIT coordination, and draft permit applications.
Implementation Planning	Identify easements, construction approach, and monitoring and maintenance framework.
Community Engagement	Workshops, pop-ups, and tribal consultation to guide design and build local stewardship; landowner consultations.

Alignment with SFBJV project adoption criteria



Restoration Goals

- 100+ acres of eelgrass
- 50 acres of oyster habitat elements
- Ecological restoration benefits to larger foodweb



Additional Benefits

- Improved water quality
- Serve as a regional implementation model developed alongside local shoreline adaptation planning
- Education and workforce development



Community Engagement

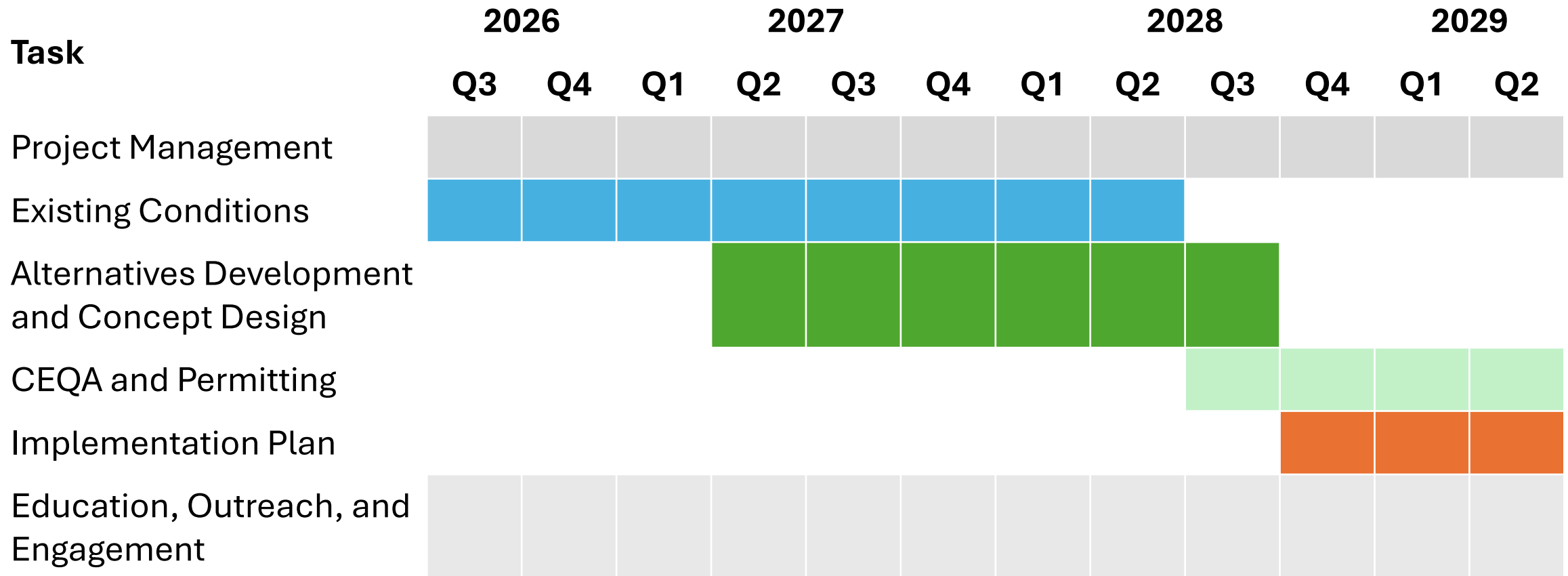
- Community-informed planning process
- Stewardship events
- City committee presentations



Governance & Partnerships

- Science-driven process
- Multi-jurisdictional collaboration
- Landowner engagement
- Focus on moving to implementation

Estimated timeline





Q&A

