

September 9, 2025

Colma Creek Citizens Advisory Committee Meeting

AGENDA

- I. Roll Call
- II. Public Comment for Items Not on the Agenda
- III. Action to set the Agenda and approve the Consent Agenda
 - a. Approve minutes of the June 10, 2025 meeting
- IV. 2026 CCCAC Meeting Schedule
- V. Updates on Colma Creek Flood Zone Projects and Maintenance Activities
- VI. Update on Colma Creek Flood Zone Budget
- VII. Updates on Other Activities
- VIII. Adjournment

Agenda Item I.

Roll Call

Name	Designation
Helen Fisicaro, Councilmember (Chair)	Town of Colma Representative
Christine Boles, Councilmember	City of Pacifica Representative
Mark Addiego, Councilmember	City of South San Francisco Representative
Marty Medina, Councilmember	City of San Bruno Representative
Dr. Roderick Daus-Magbual, Vice Mayor	City of Daly City Representative
Gail DeFries	Member At Large, City of Daly City
Edward Bortoli	Member At Large, City of South San Francisco
Ryan Mayfield	Member At Large, City of South San Francisco
Lissette Morales	Member At Large, City of South San Francisco

Agenda Item II.
Public Comment for Items Not on the Agenda

Agenda Item III.

Action to Set the Agenda and Approve the Consent Agenda

Agenda Item IV. CCCAC Meeting Schedule *

- December 9, 2025 (Project Updates)
- March 10, 2026 (Routine Maintenance 2026 Forecast and Project Updates)
- May 12, 2026 (FY26-27 Flood Zone Budget Review)
- Summer/Fall 2026 (Dates TBD): One or two meetings to provide input on Watershed Plan and Lower Colma Creek Resilience Projects **

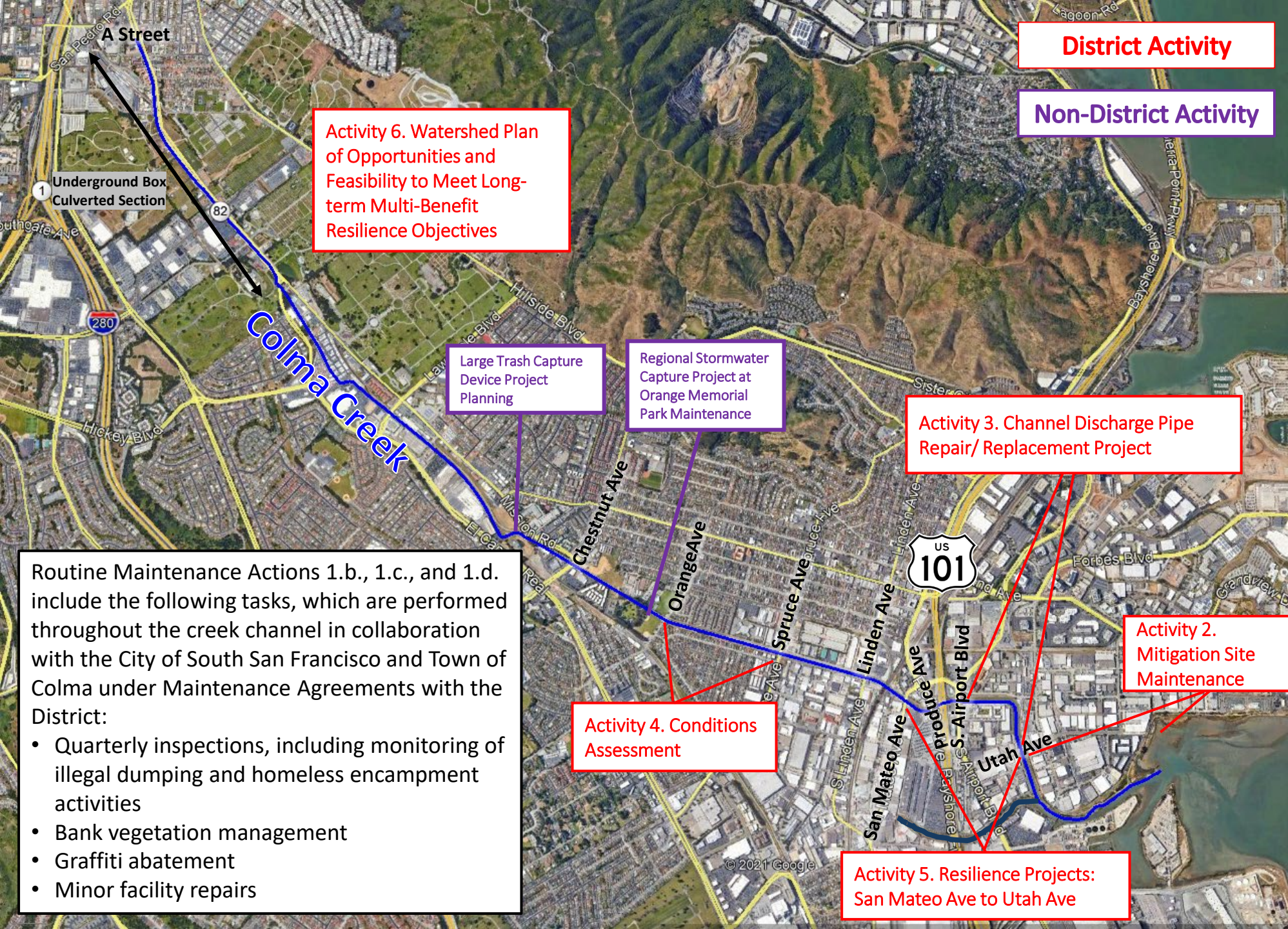
* All meetings on Tuesdays at 3:00 PM

** Scheduling of these meetings will be discussed at the May 12th meeting

Agenda Item V.

Update on Flood Zone Projects and Maintenance Activities

Project/Activity	Status	Timeline
1. Routine Maintenance	Routine Maintenance work in progress; Q3 walk completed August 27; 5-year permit applications	Ongoing
2. Stewardship	Coastal Cleanup Day September 20	Ongoing
3. Channel Discharge Pipe Repair/Replacement between U.S. Highway 101 and Utah Avenue	Punch list items include inspections and installation of new rubber gaskets to be completed this work season Q3.	Punchlist Items by 2025 Q3
4. Conditions Assessment	NTP issued, borings and cores proposed to complete report, pending responses to comments and traffic management plan	2025 Q3
5. Creek Resilience Projects: San Mateo Avenue to Utah Avenue	Project plan and schedule development, inventory collection and summary ongoing, initial desktop hydrology, survey work being planned	Concept 2026 Q3
6. Watershed Plan	Project plan and schedule development, inventory collection and summary ongoing	2027 Q2



Activity 6. Watershed Plan of Opportunities and Feasibility to Meet Long-term Multi-Benefit Resilience Objectives

Large Trash Capture Device Project Planning

Regional Stormwater Capture Project at Orange Memorial Park Maintenance

Activity 3. Channel Discharge Pipe Repair/ Replacement Project

Activity 2. Mitigation Site Maintenance

Activity 4. Conditions Assessment

Activity 5. Resilience Projects: San Mateo Ave to Utah Ave

Routine Maintenance Actions 1.b., 1.c., and 1.d. include the following tasks, which are performed throughout the creek channel in collaboration with the City of South San Francisco and Town of Colma under Maintenance Agreements with the District:

- Quarterly inspections, including monitoring of illegal dumping and homeless encampment activities
- Bank vegetation management
- Graffiti abatement
- Minor facility repairs

District Activity

Non-District Activity

Agenda Item V. Update on Colma Creek Flood Zone Projects and Maintenance Activities

Map of Colma Creek Flood Zone Projects and Maintenance Activities

1.a. Regulatory Permits

- USACE 404 and Regional Board 401 routine maintenance permits expire March 2026
- Currently advancing work to submit permit applications for renewed 5-year routine maintenance permits
 - Montrose Environmental consultant support via County Public Works Contract
 - Completed bathymetric survey

Routine Maintenance Activities			
Maintenance Activities	Creek Segment		
	Reach 1: A St/ El Camino Real downstream to Spruce Ave	Reach 2: Spruce Ave downstream to Produce Ave	Reach 3: Produce Ave downstream to Creek Mouth
Sediment removal on channel bed		X	
Vegetation management on channel banks and bed	X	X	X
Repair or management of concrete/hardened channel banks, bed, and culvert outfalls	X	X	X
Install and maintain small trash capture devices	X	X	X
Removal of obstructions (debris)	X	X	X
Installing and maintaining fences on channel banks	X	X	X
Repair access roads	X	X	X
As-needed graffiti abatement	X	X	X

1.b., 1.c., and 1.d Routine Maintenance: Contract Update

2020–2025: OneShoreline contracted with County Public Works for staff augmentation and maintenance contracting support

FY 2025–26: County support is winding down

New Contract: OneShoreline executed an as-needed infrastructure support services contract with Joe Hill Consulting & Engineering Corp. (JHCE) [\$99k, expires June 30, 2026]

Example JHCE Colma Creek Scope (\$37k)

- Site walks & maintenance needs identification
- Development of checklists & SOPs
- Construction contracting support
- Construction management oversight

Additional JHCE Activities (General Fund and San Bruno Flood Zone)

- Program development
- Construction contracting procurement
- San Bruno Creek infrastructure management support

1.b., 1.c., and 1.d Routine Maintenance

- Quarterly inspection conducted August 27
 - OneShoreline, Joe Hill Consulting, and South San Francisco staff
- No active unhoused encampments observed
- Trash from sources including storm drains and illegal dumping is ongoing concern



1.b., 1.c., and 1.d Routine Maintenance

- Testing flap gates — S Airport Ave to Spruce Ave
- Sediment removal upstream of Produce Ave
- Culvert outlet repair — Orange Ave to Spruce
- Concrete wall repair — Chestnut Ave bridge
- Vegetation removal — Chestnut Ave to Centennial Way Trail



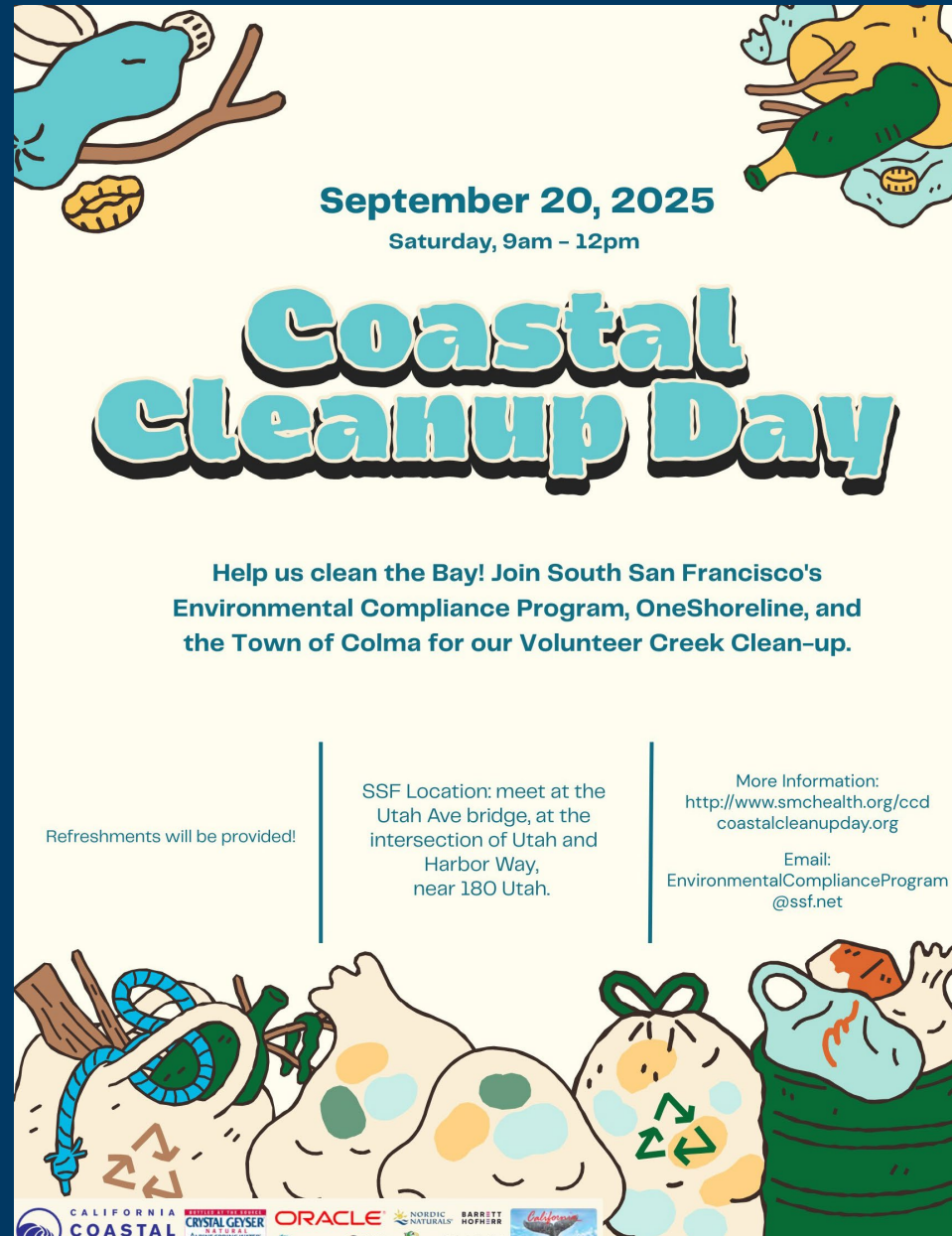
3. Channel Discharge Pipe Repair/Replacement Project

- Punch list items:
 - Inspections with closed-circuit television camera
 - New rubber gaskets at each outfall

- Work to be completed by October 2025



3. Stewardship



September 20, 2025
Saturday, 9am - 12pm

Coastal Cleanup Day

Help us clean the Bay! Join South San Francisco's Environmental Compliance Program, OneShoreline, and the Town of Colma for our Volunteer Creek Clean-up.

Refreshments will be provided!

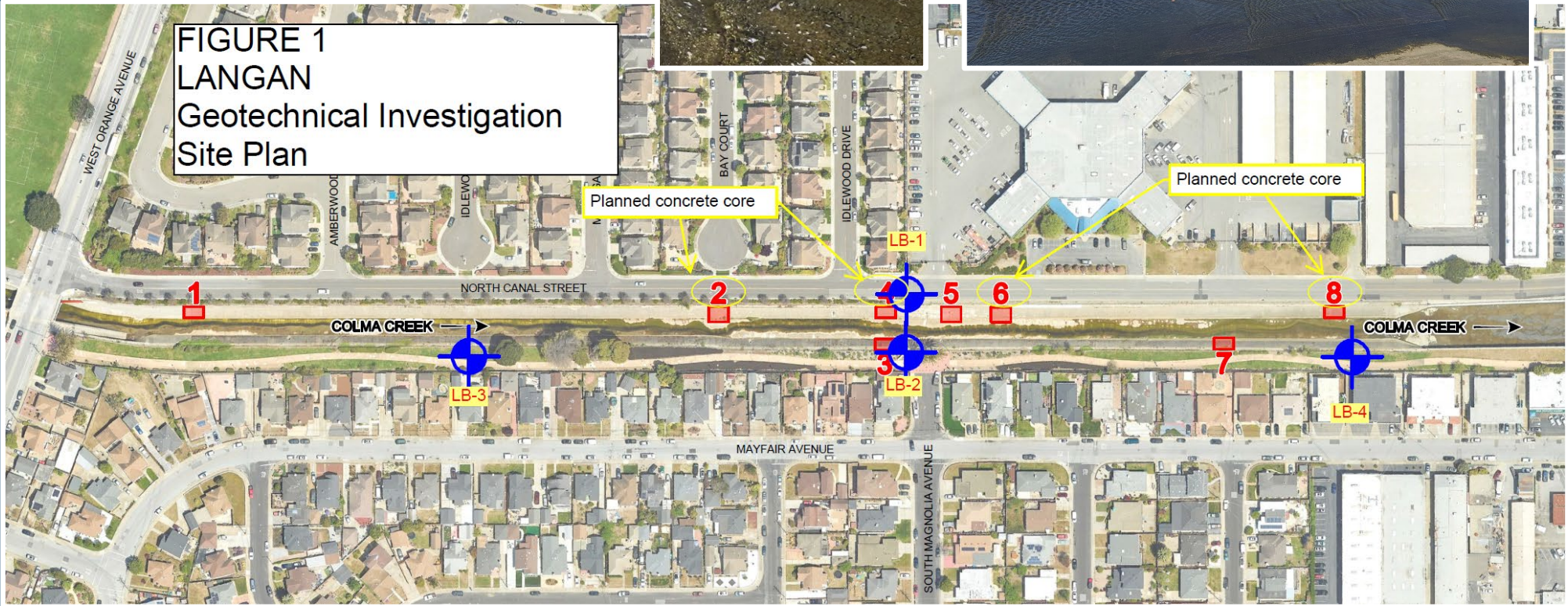
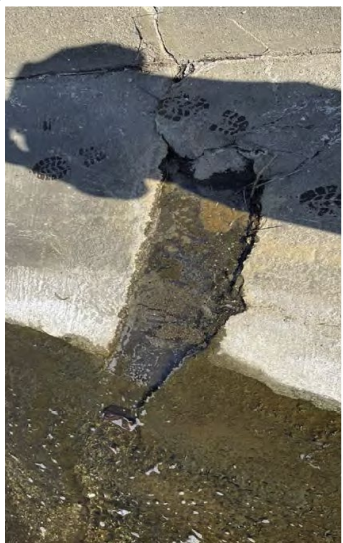
SSF Location: meet at the Utah Ave bridge, at the intersection of Utah and Harbor Way, near 180 Utah.

More Information:
<http://www.smchealth.org/ccd/coastalcleanupday.org>
Email:
EnvironmentalComplianceProgram@ssf.net

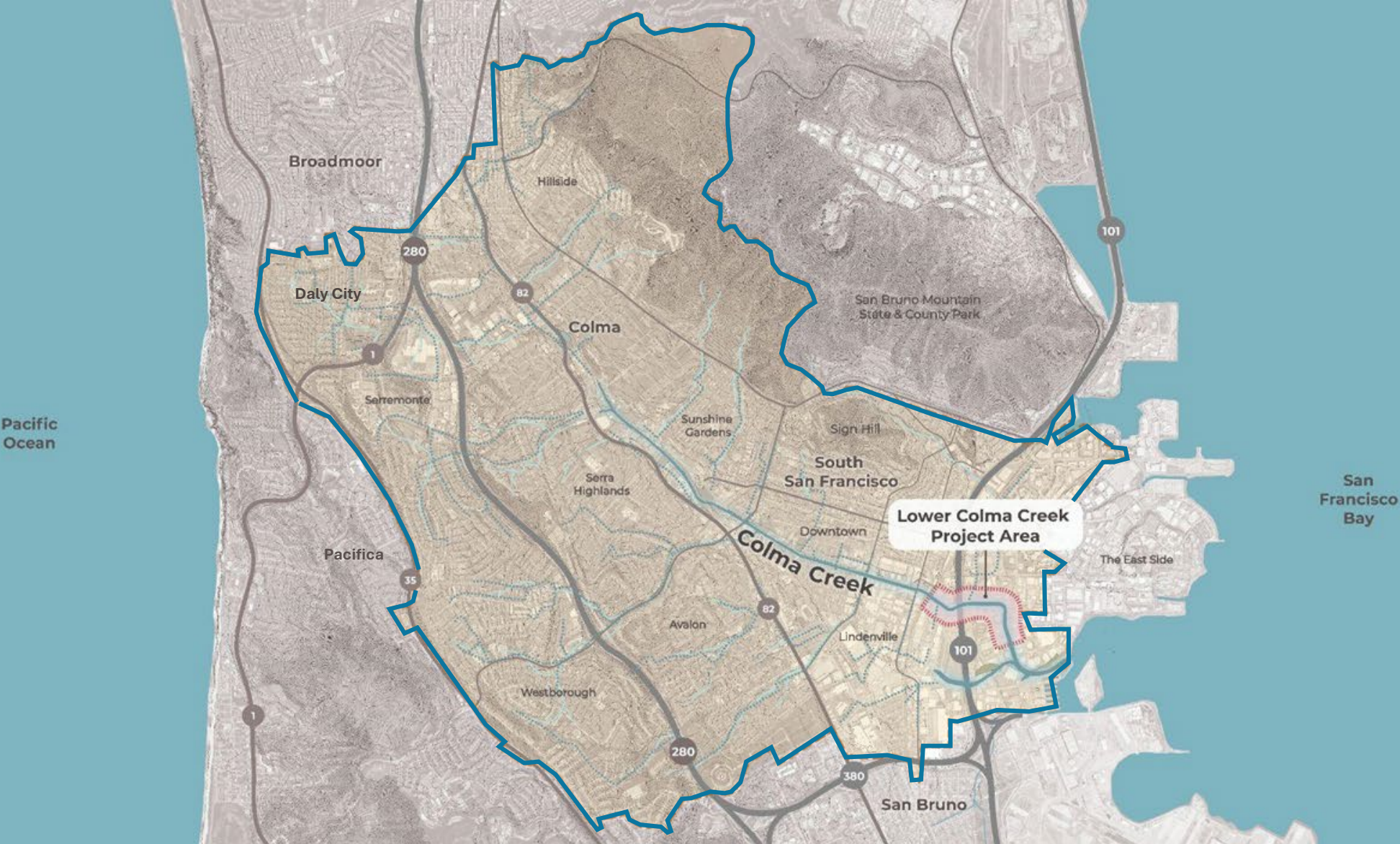
CALIFORNIA COASTAL
CRYSTAL GEYSER
ORACLE
NORDIC NATURALS
BARRETT HOPPER
California

4. Colma Creek Condition Assessment

- Work completed: Initial study fall 2023, radar survey 2024
- Upcoming work: 4 borings and 4 concrete cores between Orange Avenue and Spruce Avenue



5. and 6. Lower Creek Resilience Projects and Watershed Plan



WHAT: Develop conceptual plans for two reaches, based on established hydraulic and structural feasibility

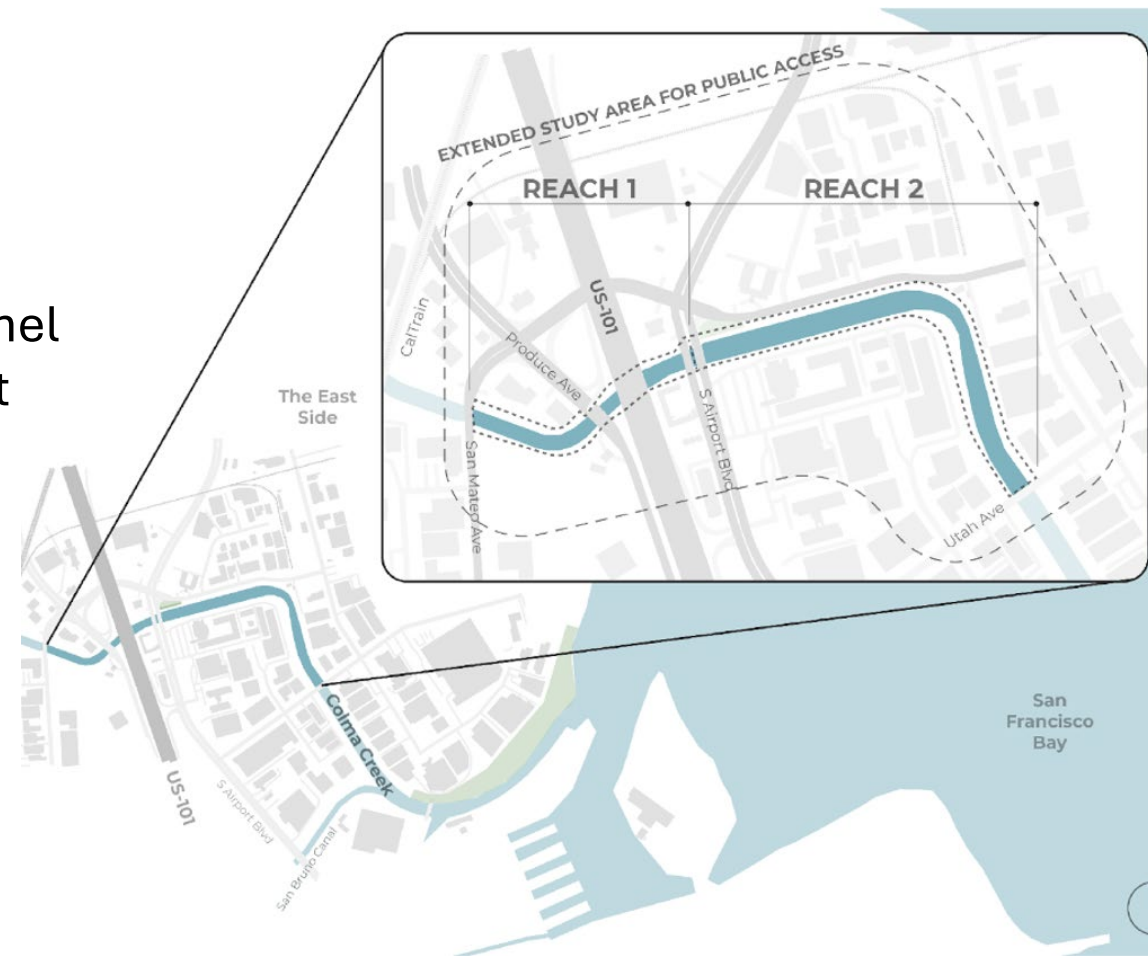
CONTEXT:

San Mateo Ave to South Airport Boulevard

- Undersized facilities with maintenance needs
- Constraints: 3 bridges; rectangular, soft bottom channel
- Direct OneShoreline property ownership and adjacent public land

South Airport Boulevard to Utah Avenue

- Undersized facilities with maintenance needs
- Substantial ROW; direct OneShoreline property ownership, underused park, habitat, and adjacent public land
- Soil erosion and deposition
- Near San Francisco Bay trail and Lindenville rezoning



WHAT: A long-range, visionary blueprint that prioritizes projects, programs, and policies that improve public health and safety, enhance habitat, support water quality and supply, and increase public access and connection to the Creek.

CONTEXT:

Colma Creek Channel

- Undersized facilities with maintenance & replacement needs
- More frequent intense storms and rising sea levels
- Constrained floodplain
- Poor ecological function
- Resilient by design concepts

Colma Creek Watershed

- High degree of impervious surface
- Opportunity for green infrastructure and land use and building policy to reduce peak flows



Shared Objectives Across Both Projects

Question for CCCAC Members:

Do these categories of objectives resonate with you as the right framework to guide the two projects?



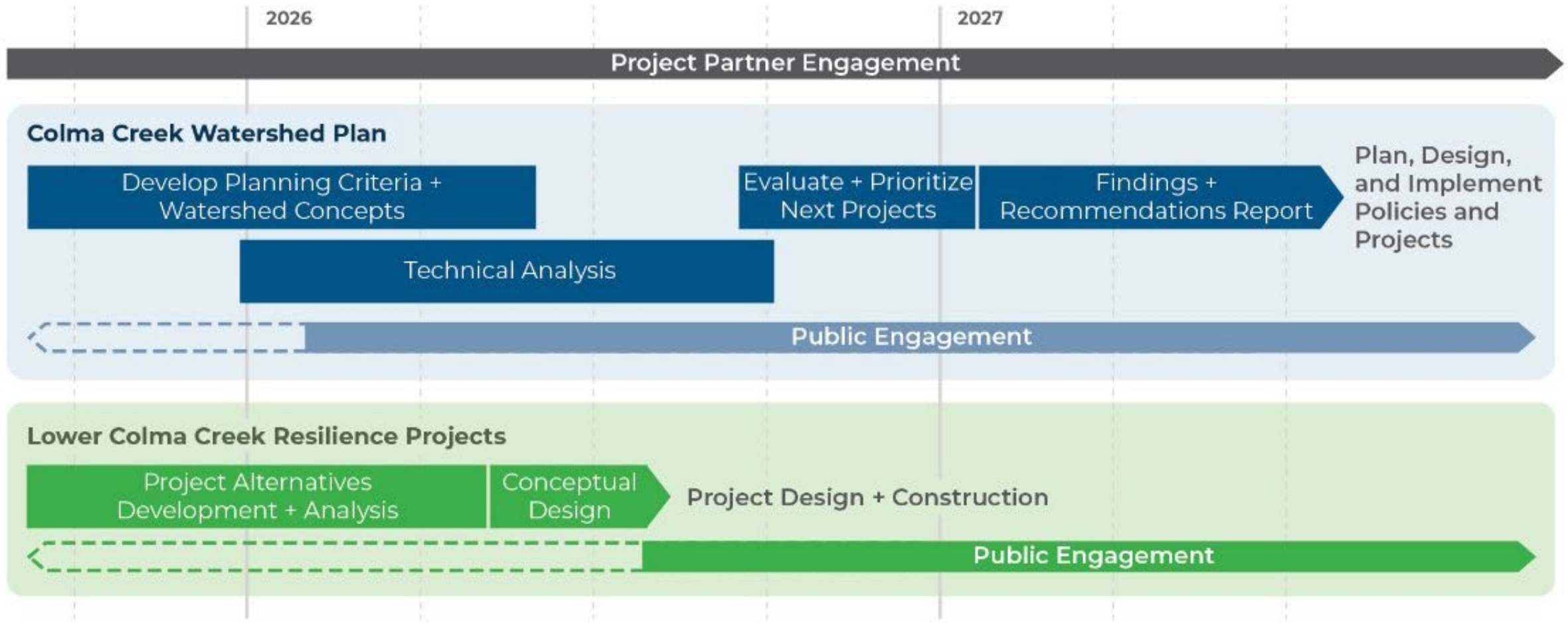
Working Group Approach

- In addition to consultations with municipal staff and CCCAC OneShoreline is convening a broad-based Working Group to help guide both projects during development
- Role: Provide detailed review of methods and deliverables for the Watershed Plan and Lower Creek Resilience Projects
- Approximately 8 meetings in next 10 months, starting in late September
- Planning around CCCAC meetings at key milestones

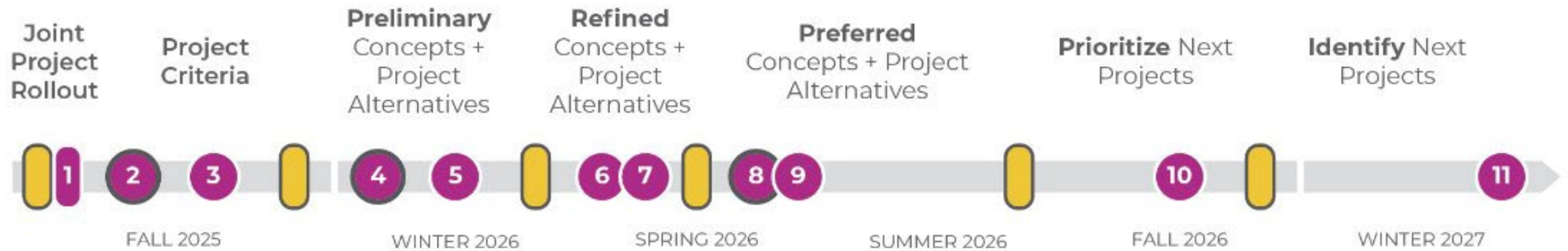
Invited Participants:

South San Francisco
Colma
Daly City
San Bruno
Pacifica
Caltrans
County Public Works, Sustainability
C/CAG
Association of Ramaytush Ohlone
San Bruno Mountain Watch
San Francisco Estuary Institute (SFEI)
Rise South City
Save the Bay
San Mateo County Economic Development Association





Working Group Meeting Schedule



- In Person
- Working Group
- CCCAC



Flood resilience: reduce flood risk and create long-term resilience to climate change



Water quality: improve water quality



Ecology: restore and enhance native species habitat and strive to connect diverse and abundant ecosystems



How Projects Relate and How to Talk with Key Audiences



Public access and safety: connect Colma Creek to surrounding communities



Economic development: leverage investments to transform Colma Creek into a regional amenity



Advancing implementation: Lower Colma Creek Resilience Projects is a nearer-term capital project initiative while the Colma Creek Watershed Plan is a longer-term watershed planning project



Now

- Project Pages on OneShoreline Website
- Information flyer at events like Coastal Clean Up Day
- Blurbs in City newsletters?

Spring/Summer 2026

- Presentations at City Councils
- Pamphlet or brochure detailing basics of projects
- “Roadshows” to community groups
- Social media posts and graphics
- Newsletter blurb and graphics to share for dissemination
- Exploring other options such as walking tours, open houses, youth engagement, activity sheets, trivia, native plant cards

Agenda Item VI. Update on Colma Creek Flood Zone Budget

		2017-18 through 2021-22 (Actual)*	2022-23 (Actual)	2023-24 (Actual)	2024-25 (Actual)	2025-26 (Budget)	2025-26 (Actual YTD)
Revenue							
	Total Revenue	\$ 25,368,202	\$ 6,688,700	\$ 8,534,415	\$ 8,993,211	\$ 6,643,652	\$ 440,813
General Administration of Flood Zone			\$ 109,470	\$ 127,453	\$ 236,913	\$ 363,933	\$ 363,933
Project Expenditures							
Activity Number	Activity Name						
1	Routine Maintenance	\$ 3,370,295	\$ 196,711	\$ 246,401	\$ 492,258	\$ 730,000	\$ 25,905
2	Mitigation Site Maintenance	\$ -	\$ 11,554	\$ 719	\$ 444	\$ 50,000	\$ -
	Annual Maintenance Activities						
3	Channel Discharge Pipe Repair/ Replacement	\$ 244,539	\$ 347,108	\$ 200,798	\$ 794,764	\$ 165,236	
4	Conditions Assessment				\$ 27,699	\$ 92,312	
5	Resilience Projects: San Mateo Ave to Utah Ave				\$ 47,793	\$ 1,200,000	\$ 100,822
6	Watershed Plan					\$ 600,000	
	Prior Completed Activity Expenditures	\$ 5,319,990					
	Total Project Expenditures/Estimates	\$ 10,110,720	\$ 902,481	\$ 648,716	\$ 2,157,722	\$ 2,272,783	\$ 100,822
Other Expenditures							
	General Liability Insurance		\$ 6,286	\$ 7,091	\$ 8,447	\$ 12,000	\$ 2,397
	Debt Service on Bond		\$ 1,499,125	\$ 1,498,875	\$ 1,496,625	\$12,510,000	\$12,504,916
	Total Other Expenditures		\$ 1,505,411	\$ 1,505,966	\$ 1,505,072	\$12,522,000	\$12,507,313
	Total Expenditures/Estimates	\$ 10,110,720	\$ 2,407,892	\$ 2,154,682	\$ 3,662,794	\$14,794,783	\$12,608,135
Estimated Fund Balance at End of Fiscal Year			\$ 34,864,652	\$ 41,143,496	\$50,782,415	\$35,875,929	\$38,251,160

Agenda Item VII.
Updates on Other Activities



Next scheduled Committee Meeting

Tuesday, December 9, 2025

3:00 p.m.