

December 9, 2025

Colma Creek Citizens Advisory Committee Meeting

AGENDA

- I. Roll Call
- II. Public Comment for Items Not on the Agenda
- III. Action to set the Agenda and Approve the Consent Agenda
 - a. Approve Minutes of the September 9, 2025 Meeting
 - b. Approve 2025 Committee Meeting Dates: March 10, May 12, Additional Meeting(s) TBD
- IV. Updates on Colma Creek Flood Zone Projects and Maintenance Activities
- V. Update on Colma Creek Flood Zone Budget
- VI. Adjournment

Agenda Item I.

Roll Call

Name	Designation
Helen Fisicaro, Councilmember (Chair)	Town of Colma Representative
Christine Boles, Councilmember	City of Pacifica Representative
Mark Addiego, Councilmember	City of South San Francisco Representative
Marty Medina, Councilmember	City of San Bruno Representative
Dr. Roderick Daus-Magbual, Vice Mayor	City of Daly City Representative
Gail DeFries	Member At Large, City of Daly City
Edward Bortoli	Member At Large, City of South San Francisco
Ryan Mayfield	Member At Large, City of South San Francisco
Lissette Morales	Member At Large, City of South San Francisco

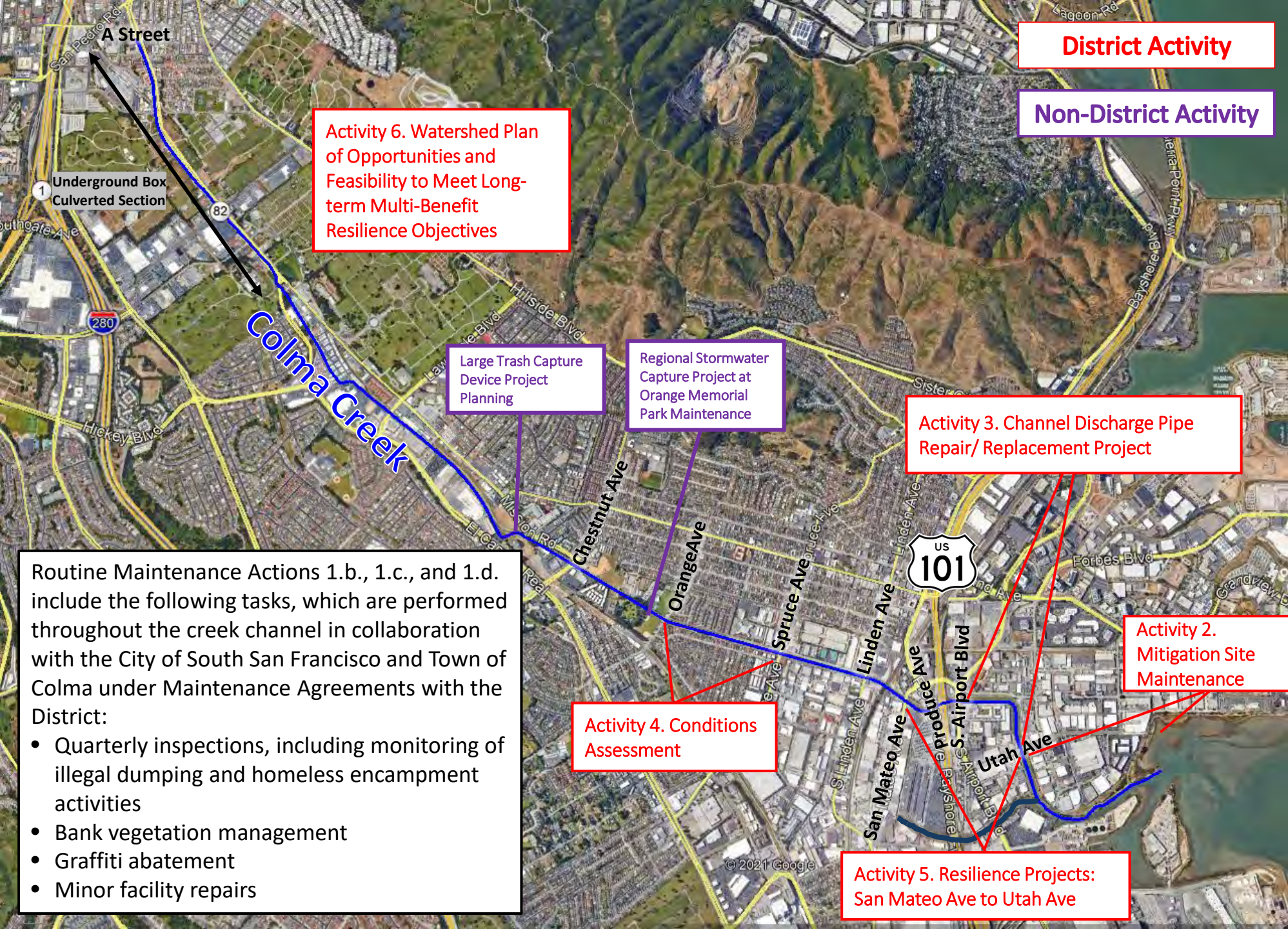
Agenda Item II.
Public Comment for Items Not on the Agenda

Agenda Item III.
Action to Set the Agenda and Approve the Consent Agenda

Agenda Item V.

Update on Flood Zone Projects and Maintenance Activities

Project/Activity	Status	Timeline
1. Routine Maintenance	2025 routine maintenance work completed; Q4 walk completed November 26; 5-year permit applications	Ongoing
2. Stewardship	Coastal Cleanup Day September 20	Ongoing
3. Channel Discharge Pipe Repair/Replacement between U.S. Highway 101 and Utah Avenue	Complete: new rubber gaskets installed October 2025	Complete
4. Conditions Assessment	Boring and core work completed between Orange Ave and Spruce Ave in October, report pending	2026 Q1
5. Creek Resilience Projects: San Mateo Avenue to Utah Avenue	Desktop study and survey work completed, modeling in progress	Concept 2026 Q3
6. Watershed Plan	Inventory near completion, developing evaluation measures	2027 Q2



Routine Maintenance Actions 1.b., 1.c., and 1.d. include the following tasks, which are performed throughout the creek channel in collaboration with the City of South San Francisco and Town of Colma under Maintenance Agreements with the District:

- Quarterly inspections, including monitoring of illegal dumping and homeless encampment activities
- Bank vegetation management
- Graffiti abatement
- Minor facility repairs

Agenda Item V.

Update on Colma Creek Flood Zone Projects and Maintenance Activities

Map of Colma Creek Flood Zone Projects and Maintenance Activities

1.a. Regulatory Permits

USACE 404 and Regional Board 401 routine maintenance permits expire March 2026

Planning RFP for routine maintenance services by February 2026

Working to submit permit applications for renewed 5-year routine maintenance permits

Updated project description, biological amendment, and culture amendment

Routine Maintenance Activities			
Maintenance Activities	Creek Segment		
	Reach 1: A St/ El Camino Real downstream to Spruce Ave	Reach 2: Spruce Ave downstream to Produce Ave	Reach 3: Produce Ave downstream to Creek Mouth
Sediment removal on channel bed		X	
Vegetation management on channel banks and bed	X	X	X
Repair or management of concrete/hardened channel banks, bed, and culvert outfalls	X	X	X
Install and maintain small trash capture devices	X	X	X
Removal of obstructions (debris)	X	X	X
Installing and maintaining fences on channel banks	X	X	X
Repair access roads	X	X	X
As-needed graffiti abatement	X	X	X

1.b., 1.c., and 1.d Routine Maintenance

- Quarterly inspection conducted November 26
OneShoreline, Joe Hill Consulting, and South San Francisco staff
- Only one active encampment observed
- Trash from sources including storm drains and illegal dumping is ongoing concern



3. Channel Discharge Pipe Repair/Replacement Project

Work completed October 2025:

- Inspections with closed-circuit television camera
- New rubber gaskets at each outfall



3. Stewardship

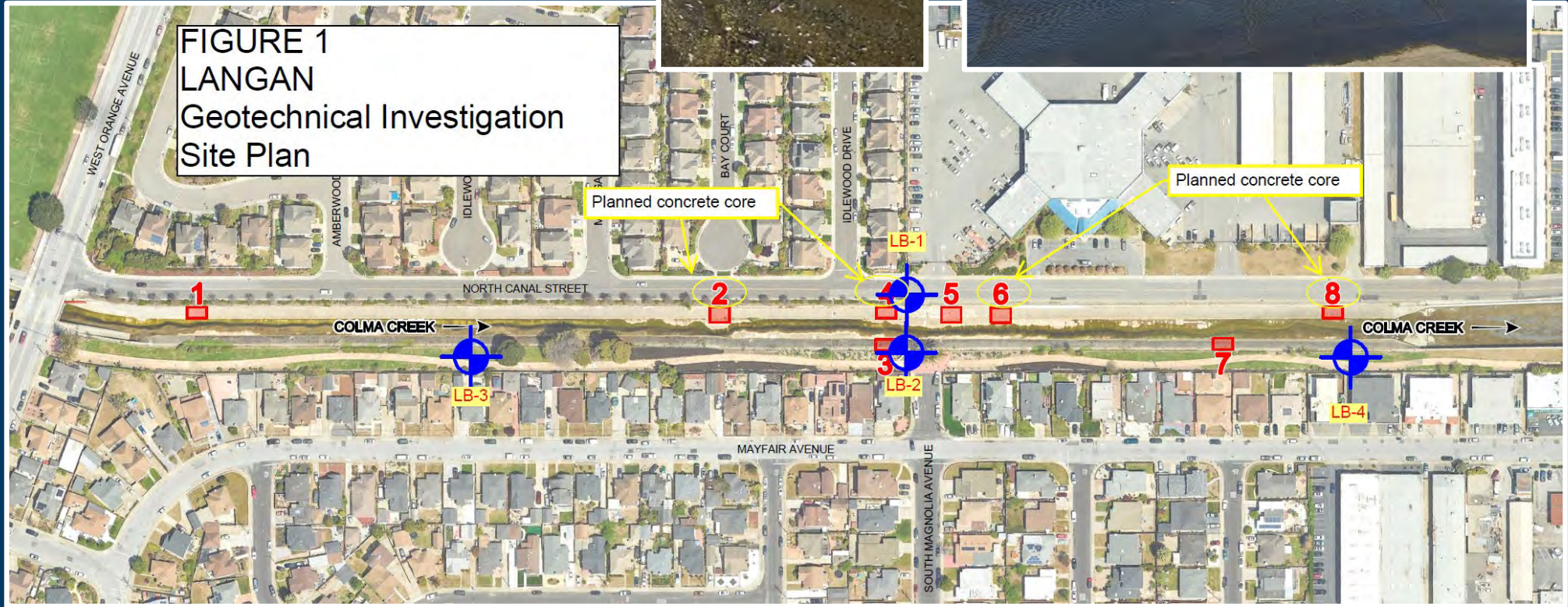
OneShoreline partnered with South San Francisco and Town of Colma

- 93 participants
- 1,030 pounds trash collected
- Engagement on OneShoreline Colma Creek Watershed Plan and Resilience Projects

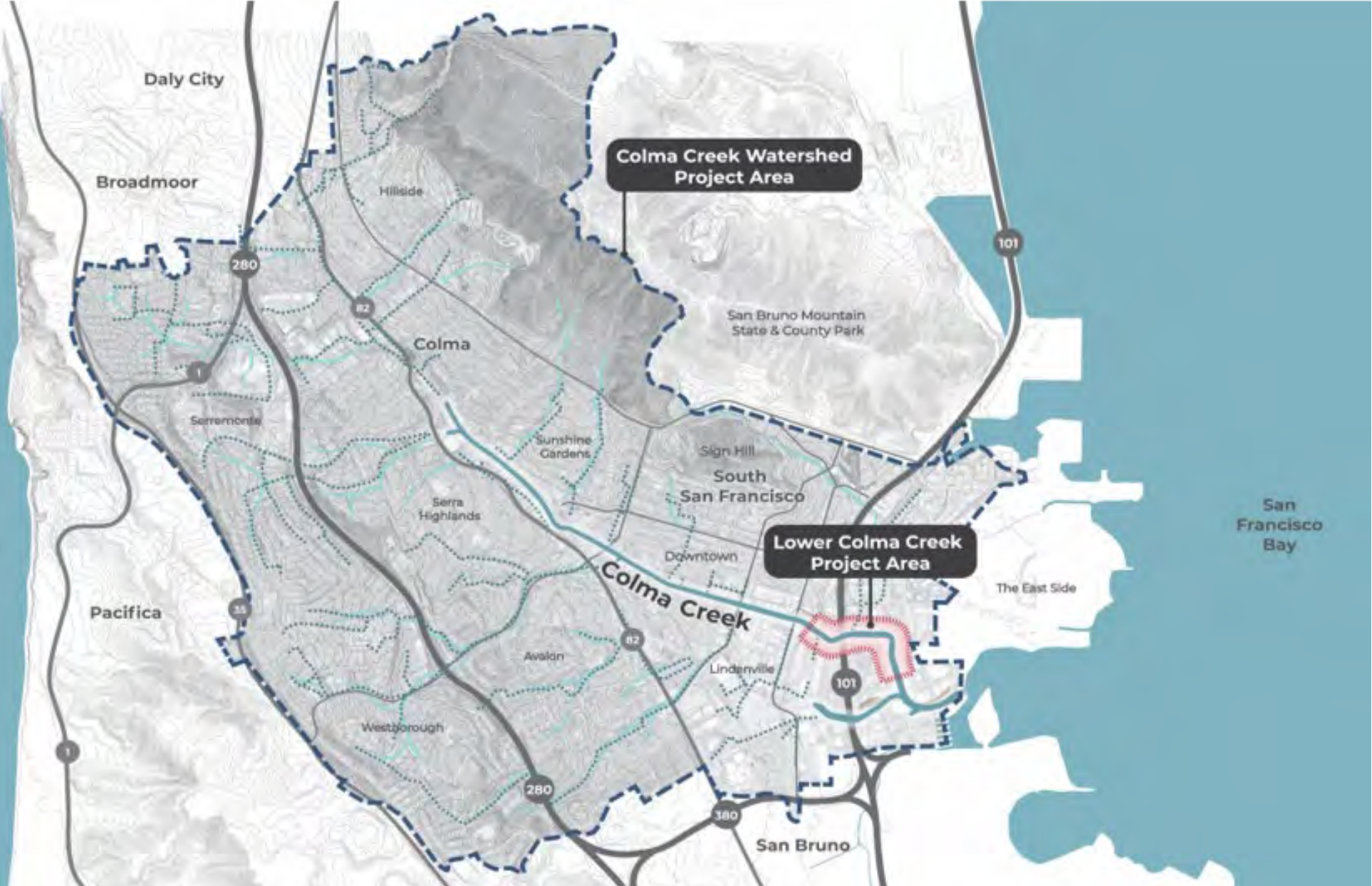


4. Colma Creek Condition Assessment

- Completed October 2025: 4 borings and 4 concrete cores between Orange Avenue and Spruce Avenue
- Previous work: Initial study fall 2023, radar survey 2024



5. and 6. Lower Creek Resilience Projects and Watershed Plan



Working Group 1

September 25

Overview

Watershed Plan

Lower Colma Creek Resilience Projects

Outcomes:

- Introductions
- Concurrence on Plan + Project Goals

Working Group 2

November 18

Inventory, Early Concepts

Lower Colma Creek Resilience Projects

Outcomes:

Agreement on process informed by existing plan work and iterative modeling

Working Group 3

December 3

Plan Assumptions +

Project Evaluation Measures

Watershed Plan

Outcomes:

- Agreement on iterative process
- Informing evaluation measures

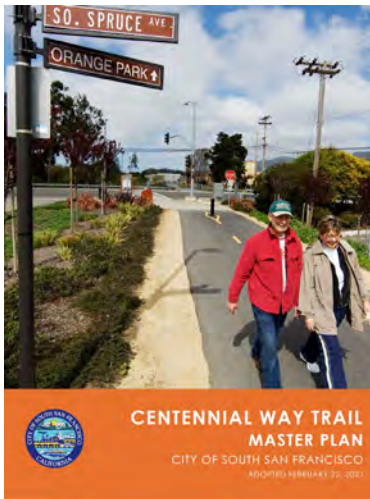
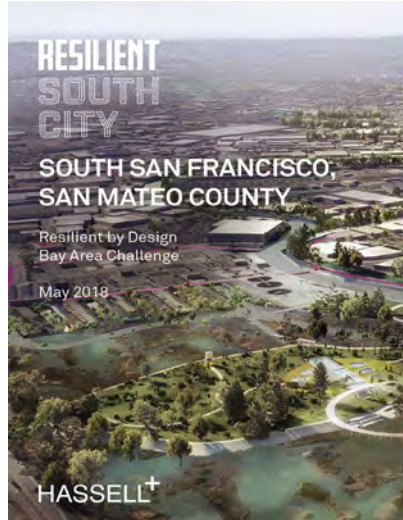
The Colma Creek Working Group is providing detailed review of methods and deliverables for the Watershed Plan and Lower Creek Resilience Projects



Participants:

- South San Francisco
- Colma
- Daly City
- San Bruno
- Caltrans
- County Public Works, Sustainability
- C/CAG
- Association of Ramaytush Ohlone
- San Bruno Mountain Watch
- San Francisco Estuary Institute (SFEI)
- Rise South City
- Save the Bay





Considering Diverse Benefits and Funding Opportunities



SAN FRANCISCO BAY
RESTORATION AUTHORITY



Coastal Conservancy



Caltrans



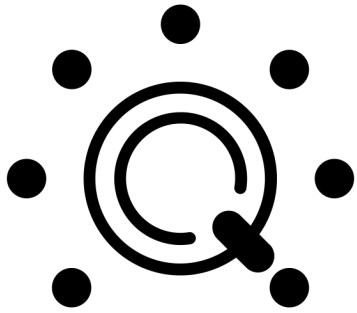
FEMA





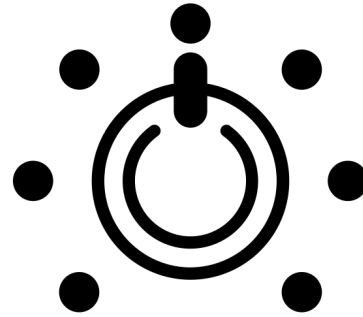
Community priorities shared:

- **New parks and open space**, spaces to gather
- **Increased visual and mobility access and recreation** along Colma Creek
- Transformation of Colma Creek to **support ecology & connection to the Bay**
- **New bike and pedestrian paths**
- Preserve **legacy of industrial uses** and **current business operations**
- **Community engagement** needs, including in person, on site events or activations



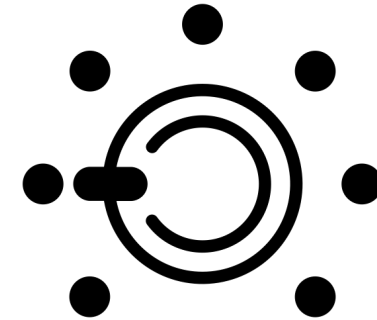
Planning Horizon

What time frame are we designing for?



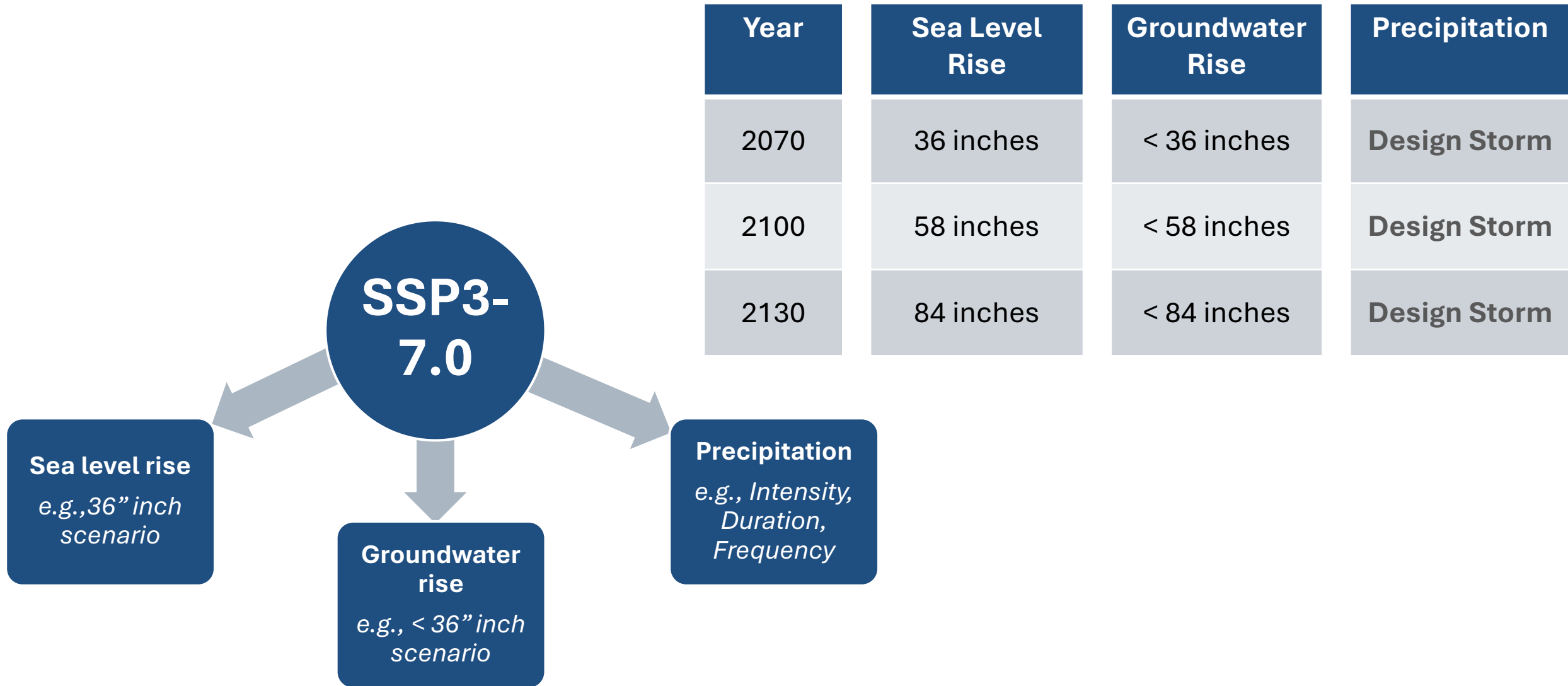
Climate Scenario

What climate scenario should we select?

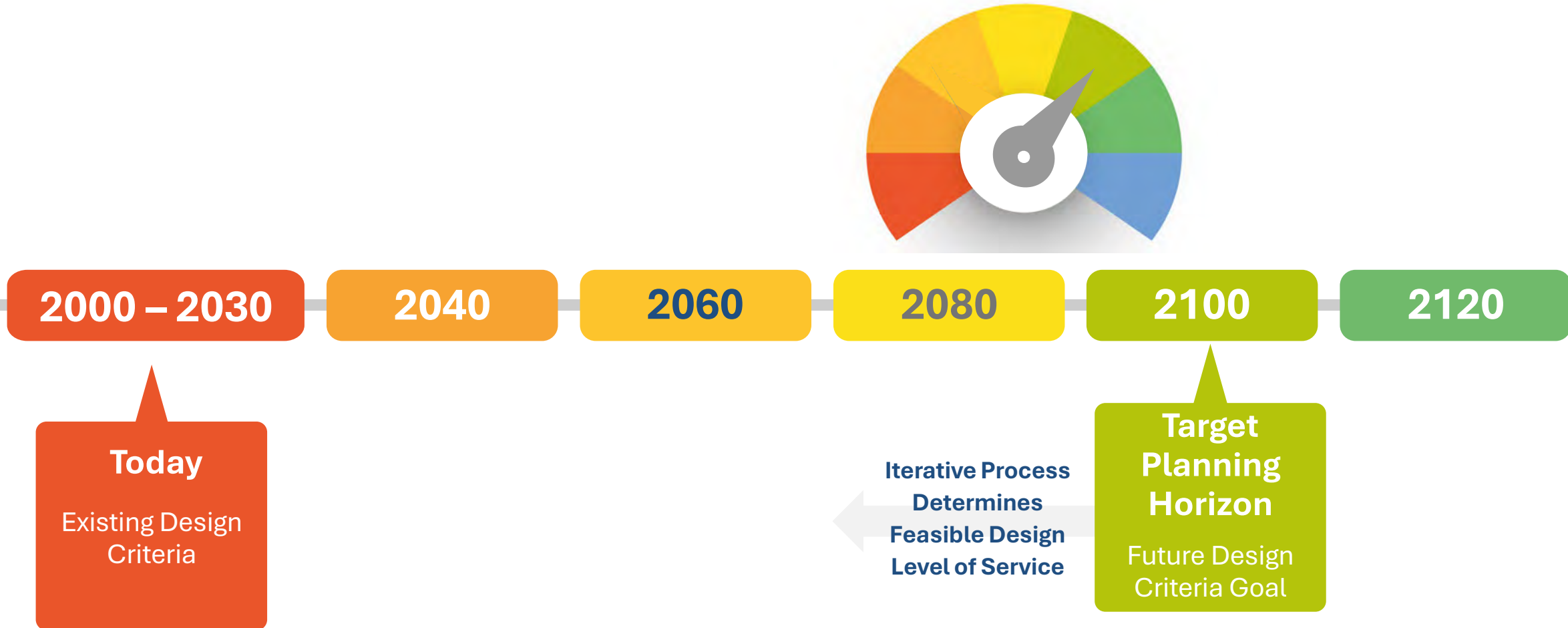


Level of Service

What flood probability or design criteria is acceptable for this project?



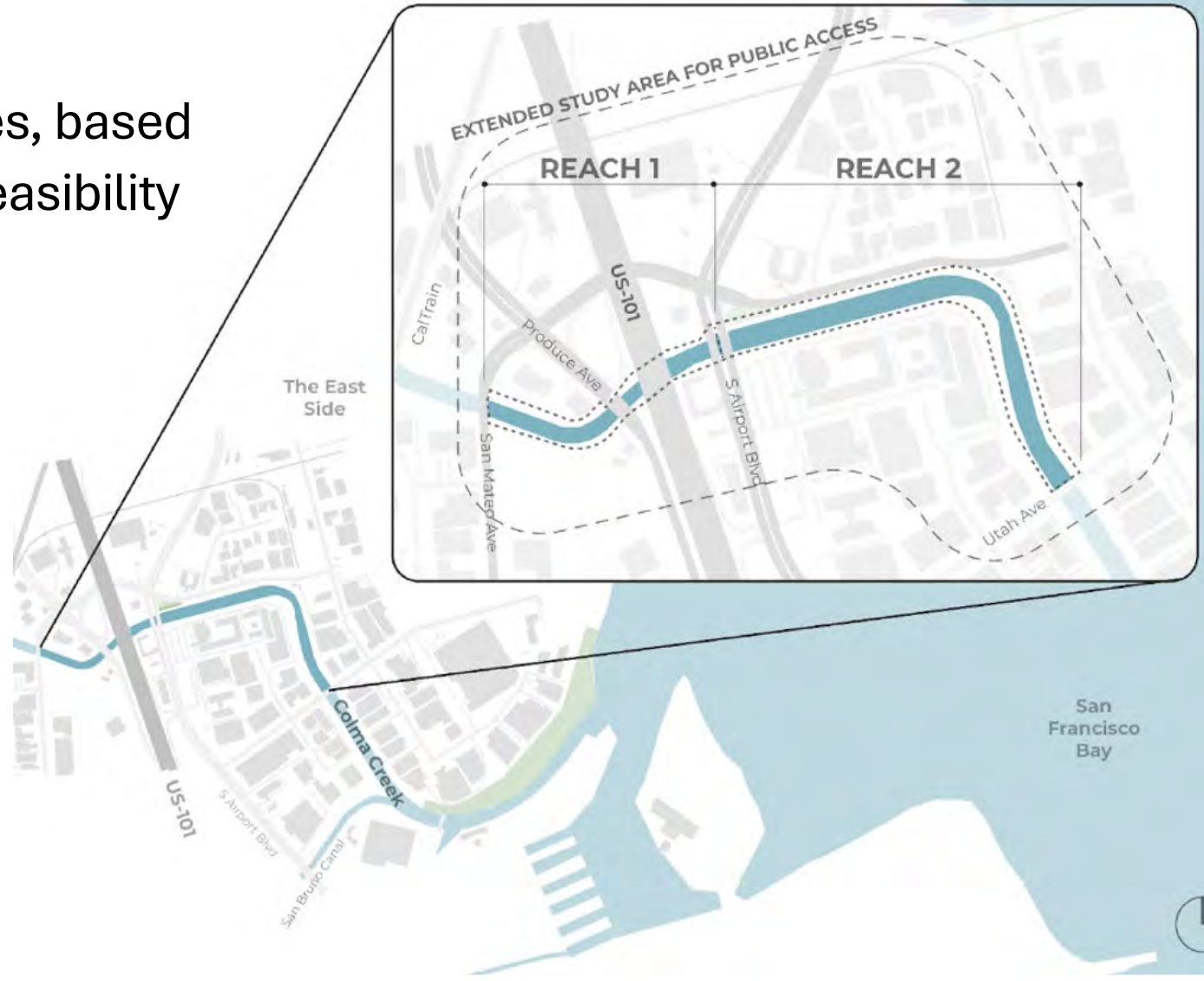
Level of Service – Iterative Approach



5. Lower Creek Resilience Projects: San Mateo Ave to Utah Ave

WHAT:

Develop conceptual plans for two reaches, based on established hydraulic and structural feasibility





Manage flood risk and build adaptability to sea level rise through resilient infrastructure along Colma Creek.



Protect and enhance native species habitat to improve ecological functions and resilience to the changing climate.



Connect Colma Creek to surrounding communities through expanded public access and enhanced safety.



Leverage investments to transform Colma Creek into a regional amenity that supports community vitality and sustainable economic development.

Reach 1B - Produce Ave Bridge to HWY101



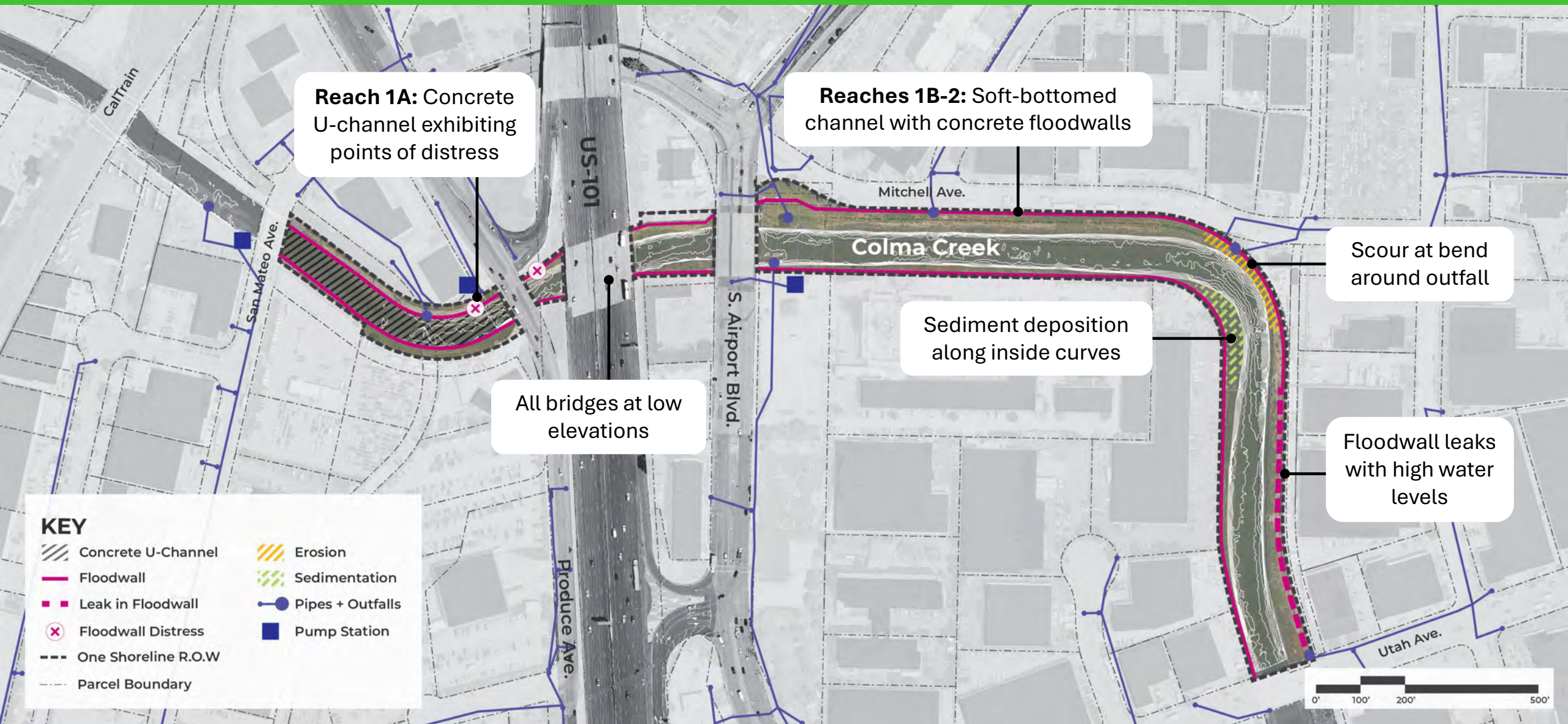
North Creek Bank



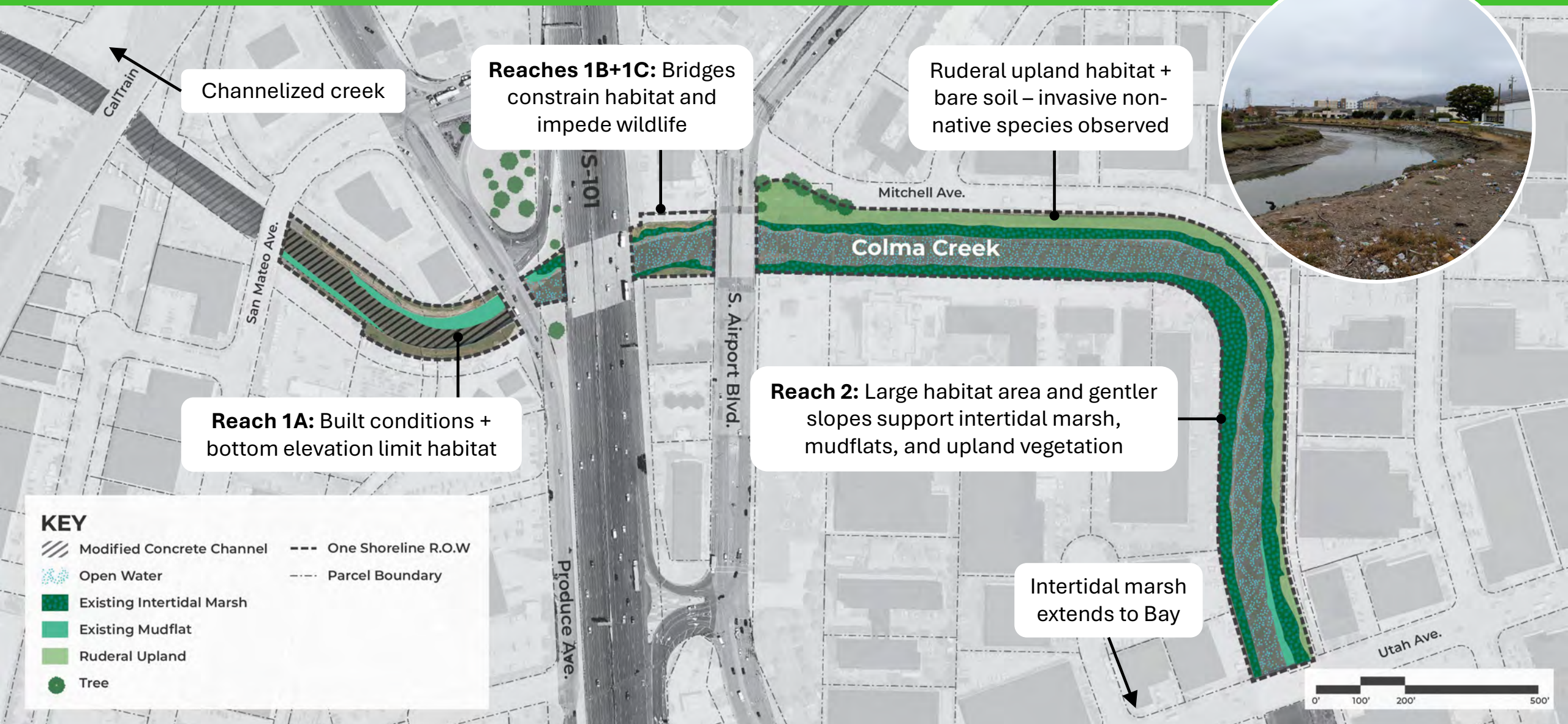
South Creek Bank



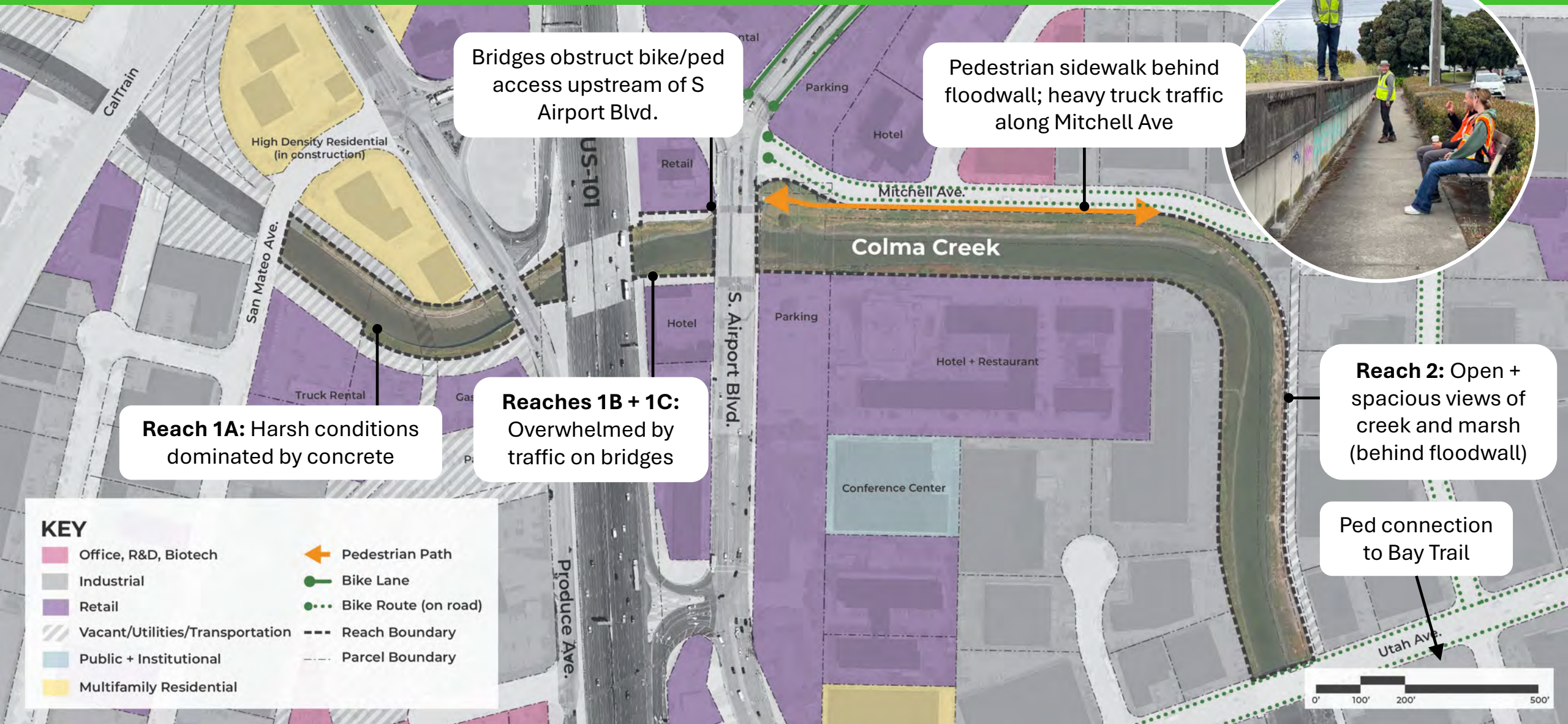
Summary of Existing Infrastructure Conditions



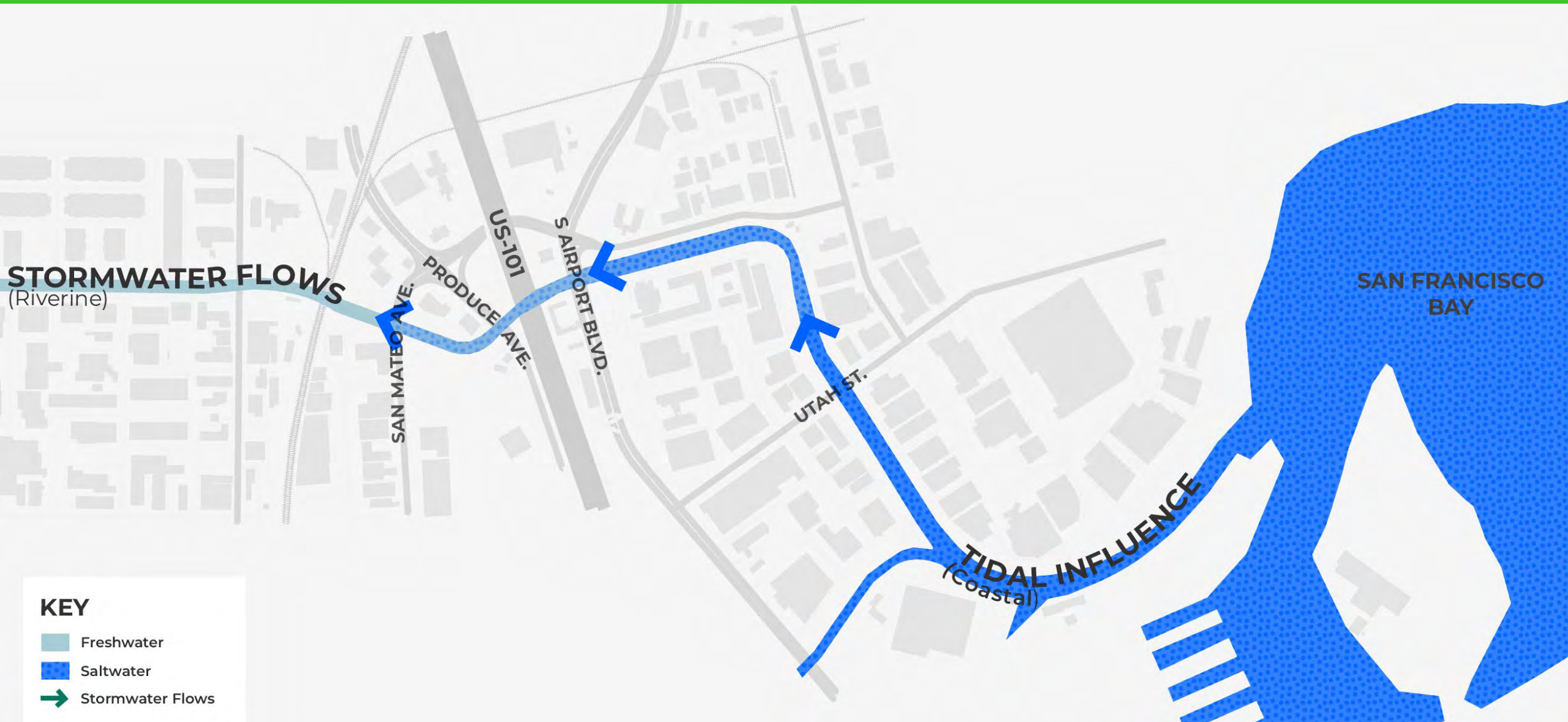
Existing Habitat



Current Land Use + Public Access and Experience



Riverine vs Coastal

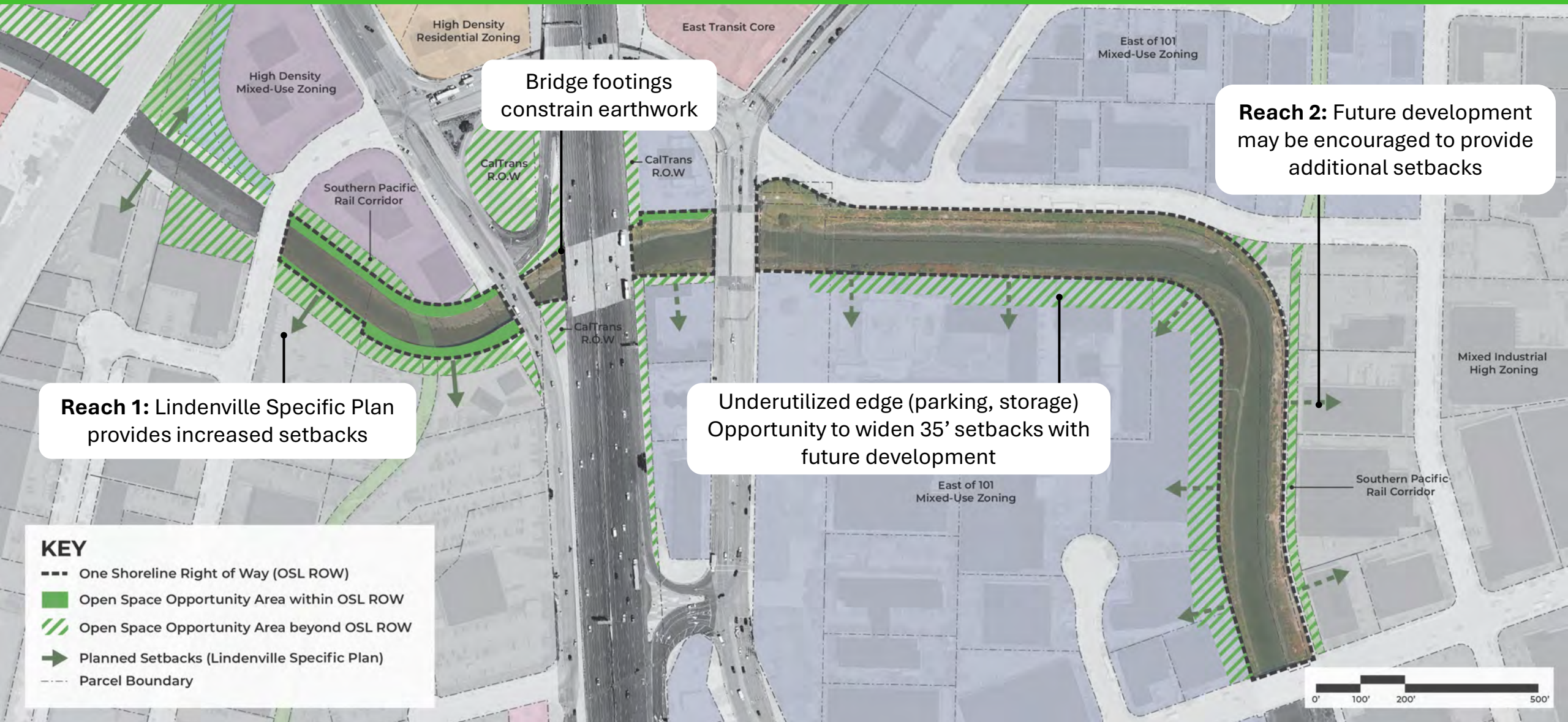


KEY

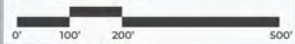
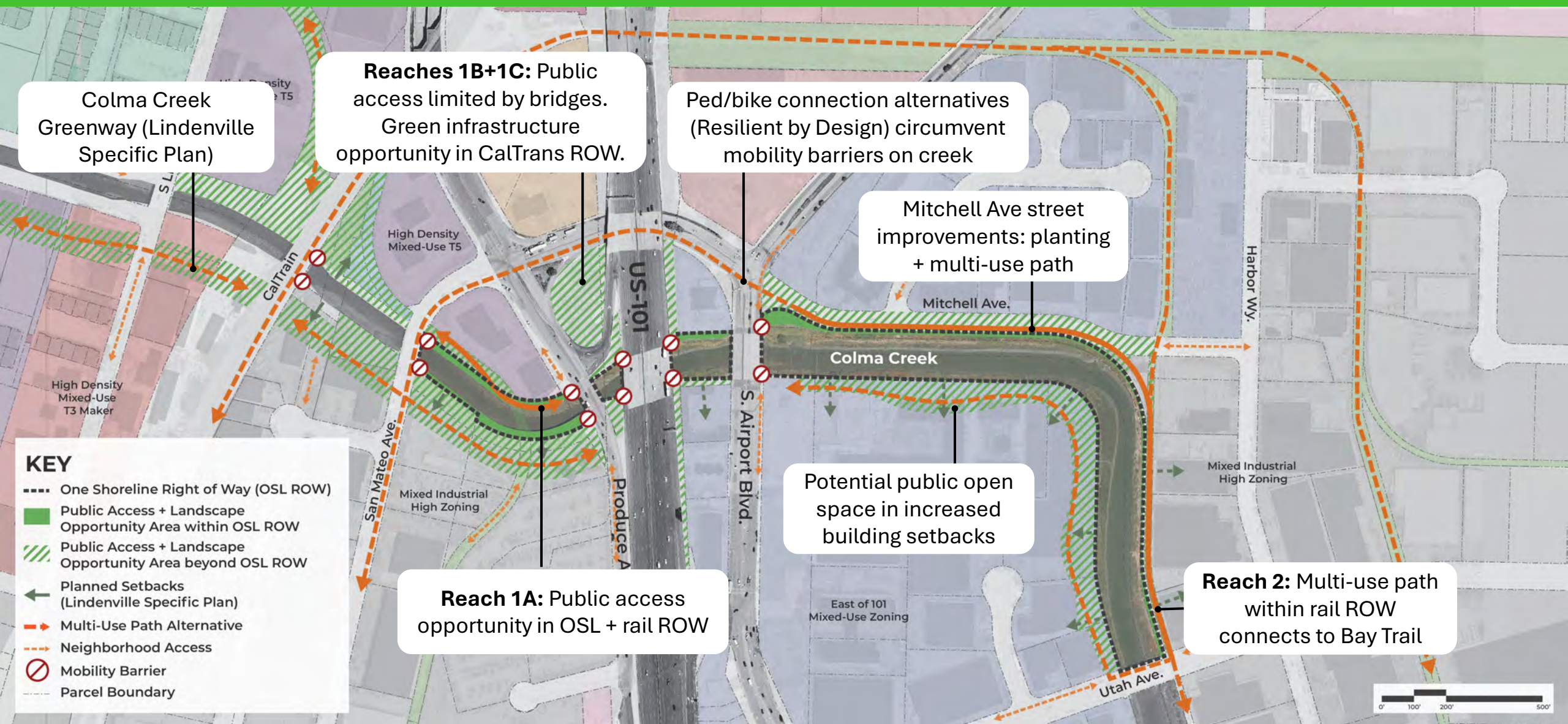
- Freshwater
- Saltwater
- Stormwater Flows



Creek Setback Opportunities Enabled by SSF Land Use Plans



Public Access + Opportunities Enabled by SSF Plans



Next Steps



In Person Working Group

Virtual Working Group

CCWP

LCC

Joint Project

CCCAC



6. Watershed Plan

WHAT:

A long-range, visionary blueprint that prioritizes projects, programs, and policies that improve public health and safety, enhance habitat, support water quality and supply, and increase public access and connection to the Creek.





Reduce flood risk

Reduce flood risk through multi-benefit watershed solutions across the Colma Creek Watershed.



Create long-term resilience to climate change

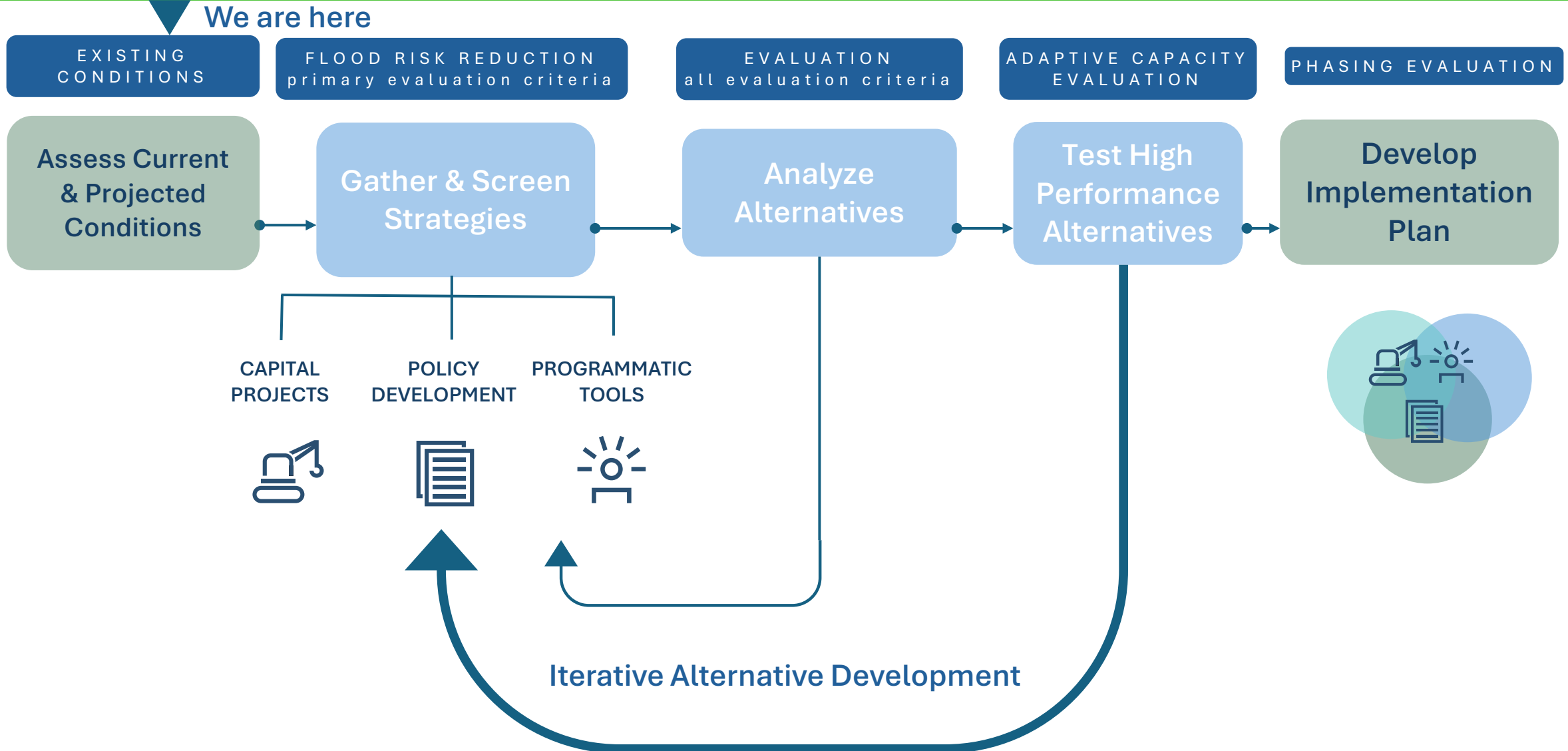
Create long-term resilience to climate change and improve water quality through policies, programs, and infrastructure that prioritizes nature-based solutions.



Connect Colma Creek to Surrounding Communities

Connect Colma Creek to surrounding communities by increasing public access, recreational opportunities, and livability while improving public safety.

Major Planning Steps

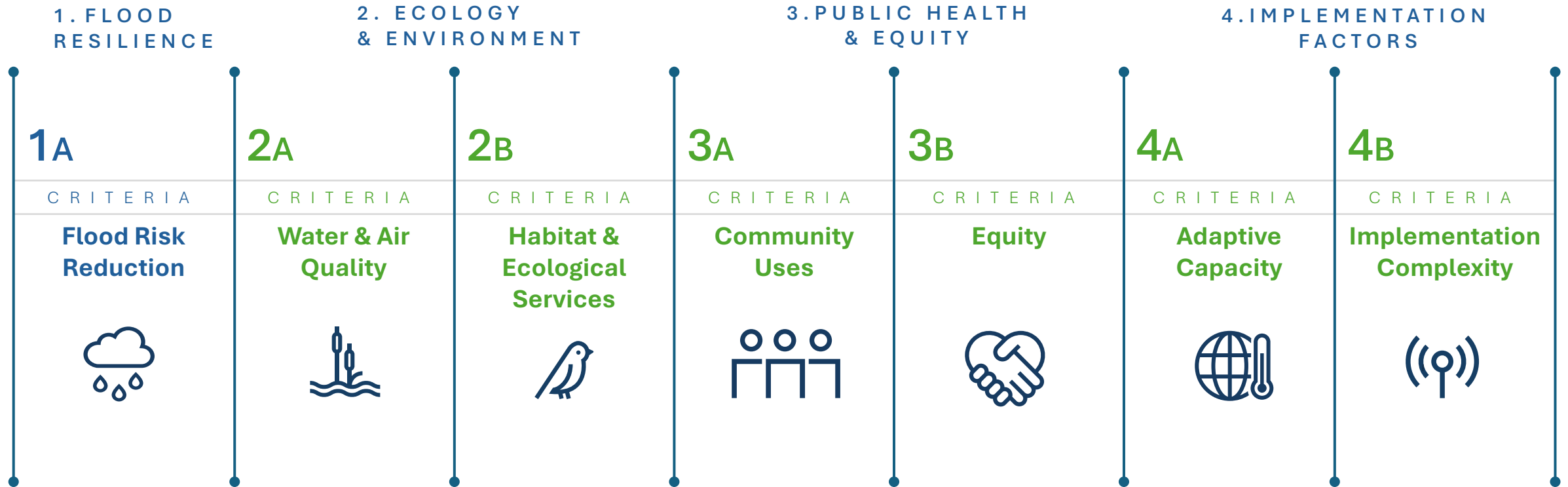


Proposed Metrics for Flood Risk Reduction

1. Potential Volume Removed from System (Storage, Dampening, + Infiltration)
2. Flooded Acres (Total)
3. Flooded Acres in Disadvantaged Communities
4. Flooded Parcels with Critical Infrastructure

Watershed Alternative	Total Flooded Acres*	Flooded Acres in Disadvantaged Communities*	Flooded Parcels with Critical Infrastructure*	Maximum Potential Volume

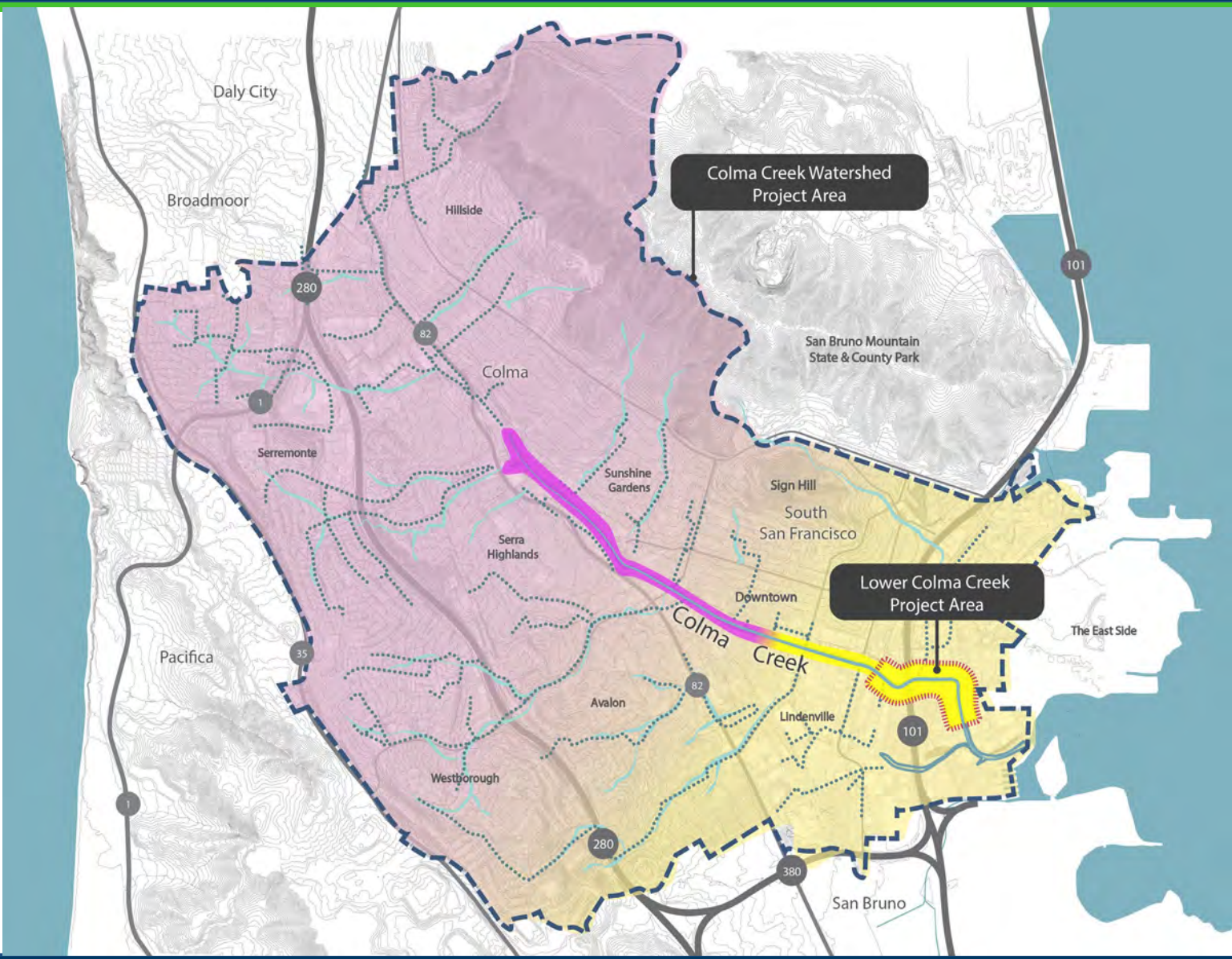
Draft Planning-Scale Evaluation Categories



Planning Units: Preliminary Approach

Upper Reach
Upstream of
modeled 2100
Tide Line

**Upper Reach
Drainage Area**

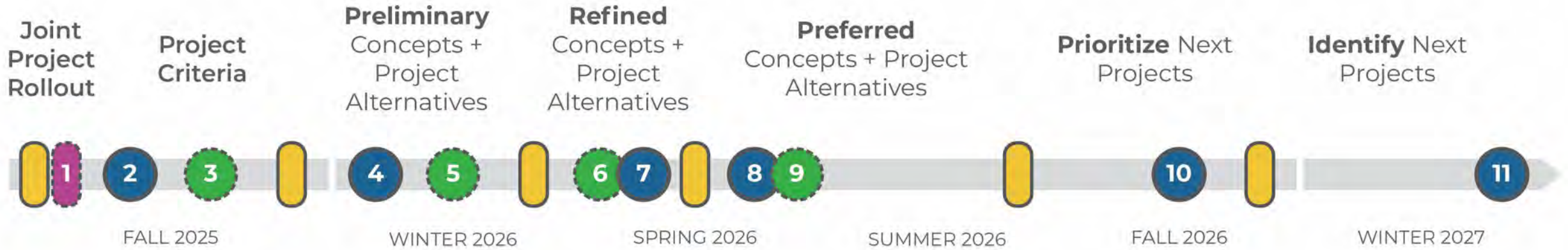


Lower Reach
Downstream of modeled
2100 Tide Line

**Lower Reach
Drainage Area**



Next Steps



- In Person Working Group
- Virtual Working Group
- CCWP
- LCC
- Joint Project
- CCCAC



Agenda Item V. Update on Colma Creek Flood Zone Budget

		2017-18 through 2021-22 (Actual)*	2022-23 (Actual)	2023-24 (Actual)	2024-25 (Actual)	2025-26 (Budget)	2025-26 (Actual YTD)
Revenue							
	Total Revenue	\$ 25,368,202	\$ 6,688,700	\$ 8,534,415	\$ 8,993,211	\$ 6,643,652	\$ 1,460,700
General Administration of Flood Zone			\$ 109,470	\$ 127,453	\$ 236,913	\$ 383,933	\$ 71,119
Project Expenditures							
Activity Number	Activity Name						
1	Routine Maintenance	\$ 3,370,295	\$ 196,711	\$ 246,401	\$ 492,258	\$ 730,000	\$ 80,714
2	Stewardship	\$ 400,148	\$ 11,554	\$ 719	\$ 444	\$ 50,000	\$ -
3	Channel Discharge Pipe Repair/ Replacement	\$ 244,539	\$ 347,108	\$ 200,798	\$ 794,764	\$ 165,236	\$ 2,294
4	Conditions Assessment				\$ 27,699	\$ 92,312	\$ 1,083
5	Resilience Projects: San Mateo Ave to Utah Ave				\$ 47,793	\$ 1,200,000	\$ 218,966
6	Watershed Plan					\$ 600,000	\$ 55,671
	Prior Completed Activity Expenditures	\$ 5,319,990					
	Total Project Expenditures/Estimates	\$ 10,110,720	\$ 902,481	\$ 648,716	\$ 1,335,259	\$ 2,843,048	\$ 358,728
Other Expenditures							
	General Liability Insurance		\$ 6,286	\$ 7,091	\$ 8,447	\$ 12,000	\$ 10,925
	Debt Service on Bond		\$ 1,499,125	\$ 1,498,875	\$ 1,496,625	\$12,510,000	\$12,504,915
	Total Other Expenditures		\$ 1,505,411	\$ 1,505,966	\$ 1,505,072	\$12,522,000	\$12,515,840
	Total Expenditures/Estimates	\$ 10,110,720	\$ 2,407,892	\$ 2,154,682	\$ 3,662,794	\$14,794,783	\$12,874,568
Estimated Fund Balance at End of Fiscal Year			\$ 34,864,652	\$ 41,143,496	\$50,782,415	\$35,875,929	\$36,259,335

*Expenditures before FY20-21 do not include staff time



Next scheduled Committee Meeting

Tuesday, March 10, 2025

3:00 p.m.