

**May 12, 2026**

***Colma Creek Citizens Advisory Committee Meeting***

**AGENDA**

- I. Roll Call
- II. Public Comment for Items Not on the Agenda
- III. Action to set the Agenda and Approve the Consent Agenda
  - a. Approve Minutes of the December 9, 2025 Meeting
- IV. Updates on Colma Creek Flood Zone Projects and Maintenance Activities
- V. Fiscal Year 2026–2027 Budget
- VI. Adjournment

# Agenda Item I.

## Roll Call

Name	Designation
Helen Fisicaro, Councilmember (Chair)	Town of Colma Representative
Greg Wright, Councilmember	City of Pacifica Representative
Mark Addiego, Councilmember	City of South San Francisco Representative
Marty Medina, Councilmember	City of San Bruno Representative
Teresa G. Proaño, Vice Mayor	City of Daly City Representative
Gail DeFries	Member At Large, City of Daly City
Edward Bortoli	Member At Large, City of South San Francisco
Ryan Mayfield	Member At Large, City of South San Francisco
Lissette Morales	Member At Large, City of South San Francisco

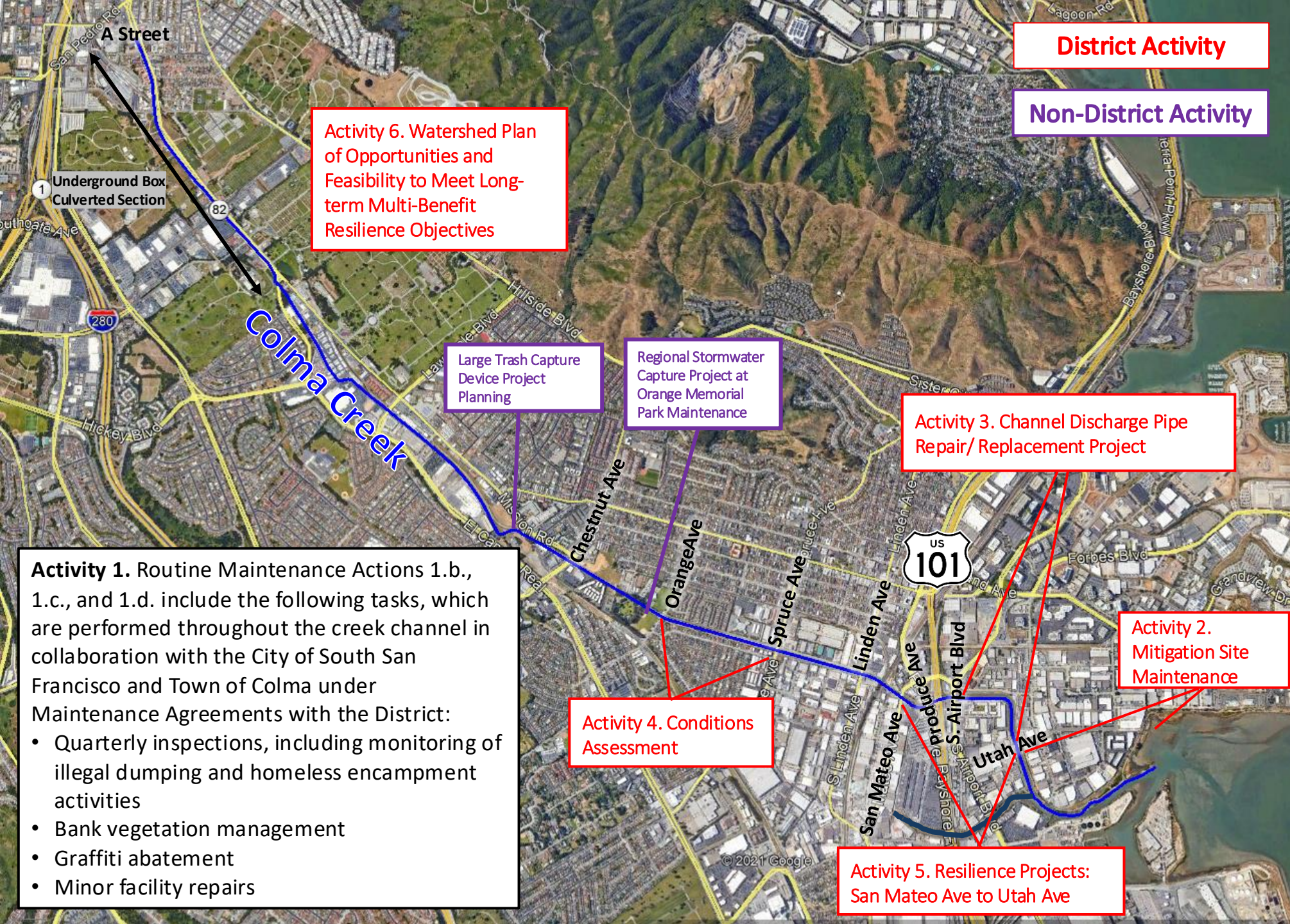
**Agenda Item II.**  
**Public Comment for Items Not on the Agenda**

**Agenda Item III.**  
**Action to Set the Agenda and Approve the Consent Agenda**

# Agenda Item IV.

## Update on Flood Zone Projects and Maintenance Activities

Project/Activity	Status	Timeline
<b>1. Routine Maintenance</b>	Q2 walk completed April 28, finalizing scope for 2026, 5-year permit applications ongoing	<b>Ongoing</b>
<b>2. Stewardship</b>	National River Cleanup Day event planned May 16	<b>Ongoing</b>
<b>3. Channel Discharge Pipe Repair/Replacement between U.S. Highway 101 and Utah Avenue</b>	Notice of completion filed	<b>Complete</b>
<b>4. Conditions Assessment</b>	Boring and core work completed between Orange Ave and Spruce Ave, report due in May	<b>2026 Q2</b>
<b>5. Creek Resilience Projects: San Mateo Avenue to Utah Avenue</b>	Design development ongoing	<b>Concept 2026 Q3</b>
<b>6. Watershed Plan</b>	Watershed model updated and list of potential policy, projects, and programs prepared	<b>2027 Q2</b>



**Activity 1. Routine Maintenance Actions 1.b., 1.c., and 1.d. include the following tasks, which are performed throughout the creek channel in collaboration with the City of South San Francisco and Town of Colma under Maintenance Agreements with the District:**

- Quarterly inspections, including monitoring of illegal dumping and homeless encampment activities
- Bank vegetation management
- Graffiti abatement
- Minor facility repairs

**Activity 6. Watershed Plan of Opportunities and Feasibility to Meet Long-term Multi-Benefit Resilience Objectives**

Large Trash Capture Device Project Planning

Regional Stormwater Capture Project at Orange Memorial Park Maintenance

**Activity 3. Channel Discharge Pipe Repair/Replacement Project**

**Activity 2. Mitigation Site Maintenance**

**Activity 4. Conditions Assessment**

**Activity 5. Resilience Projects: San Mateo Ave to Utah Ave**

**District Activity**

**Non-District Activity**

# Agenda Item IV.

## Update on Colma Creek Flood Zone Projects and Maintenance Activities

Map of Colma Creek Flood Zone Projects and Maintenance Activities

# 1.a. Regulatory Permits

2026 routine maintenance to be completed under current permits

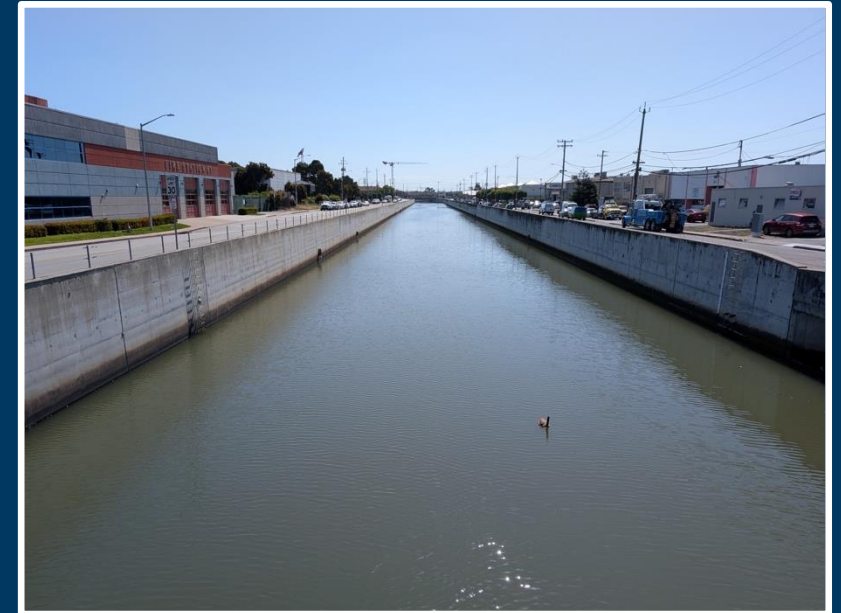
Working to submit permit applications for renewed 5-year routine maintenance permits

- USACE 404 and Regional Board 401 applications prepared
- CDFW underway
- BCDC jurisdictional determination pending

Routine Maintenance Activities			
Maintenance Activities	Creek Segment		
	Reach 1: A St/ El Camino Real downstream to Spruce Ave	Reach 2: Spruce Ave downstream to Produce Ave	Reach 3: Produce Ave downstream to Creek Mouth
Sediment removal on channel bed		X	
Vegetation management on channel banks and bed	X	X	X
Repair or management of concrete/hardened channel banks, bed, and culvert outfalls	X	X	X
Install and maintain small trash capture devices	X	X	X
Removal of obstructions (debris)	X	X	X
Installing and maintaining fences on channel banks	X	X	X
Repair access roads	X	X	X
As-needed graffiti abatement	X	X	X

## 1.b., 1.c., and 1.d Routine Maintenance

- Quarterly inspection conducted April 28  
OneShoreline, Joe Hill Consulting, and South San Francisco staff
- Only one active encampment observed
- Trash from sources including storm drains and illegal dumping is ongoing concern



# 1.b., 1.c., and 1.d Routine Maintenance

- April 16 Town of Colma Police Department reports of encampment activity on Colma Creek near confluence with Old Colma Creek
- OneShoreline has provided Creek Right of Way keys for continued access



## 1.b., 1.c., and 1.d Routine Maintenance

- Sediment removal (400 cubic yards)—upstream of Produce Avenue and San Mateo Avenue
- Wall panel sealant application between South Airport and Utah Ave
- Flap gates to service
- Concrete patching between Orange Memorial Park and Spruce Ave
- Driftwood removal at Centennial Way bridge
- Vegetation management downstream of BART culvert
- Willow trimming at Mission Road Culvert



# 1.b., 1.c., and 1.d Routine Maintenance

## **San Mateo County Public Works Master Services Agreement ending June 30, 2026**

Operational, Construction Management, and Environmental Support

## **Request for Service Qualifications for As-Needed Routine Maintenance Master Services Agreements Awarded April 27**

- Goodfellow Bros. California, LLC
- Yerba Buena Engineering & Construction, Inc.

**Infrastructure Maintenance Administration and Environmental Services Closed April 15, 2026, recommandations to the OneShoreline Board on May 18.**

# 2. Stewardship

OneShoreline partnered with County Public Works and Sustainability Department for volunteer clean up event on March 14:

- 550 gallons trash collected
- 28 participants including El Camino High School, Alta Loma Middle School, parents, residents, and staff

**COLMA CREEK VOLUNTEER CLEAN-UP**  
**Saturday, March 14, 2026**  
**9AM – 12PM**



**Volunteers needed!** Come join OneShoreline and County of San Mateo's Public Works and Sustainability Department to pick up trash and create a healthier and more beautiful environment. Great opportunity for student volunteer hours! **Help clean up Colma Creek!**

**LOCATION:**  
Meet along the Bay Trail at the Public Shore parking lot near Littlefield Ave.  
Scan QR code for meetup location



**WHAT TO BRING:**  
Wear comfortable clothes and closed toe shoes that you don't mind getting dirty!  
Dress in layers.  
All tools and equipment (gloves, trash pickers, etc.) will be provided, but you are welcome to bring your own if you'd like!  
Refreshments will be provided

OneShoreline | COUNTY OF SAN MATEO DEPARTMENT OF PUBLIC WORKS | SAN MATEO COUNTY SUSTAINABILITY DEPARTMENT | Please RSVP contact: [raibanese@smcgov.org](mailto:raibanese@smcgov.org)



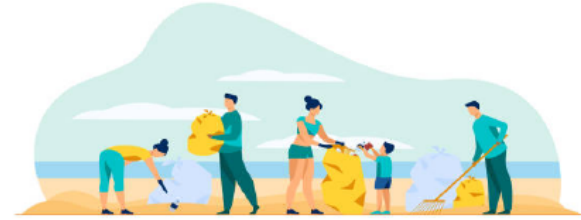
# 2. Stewardship

May 16 National River Cleanup Day

San Mateo County Public Works in partnership with OneShoreline, County Sustainability, and South San Francisco hosting volunteer creek clean up event

## COLMA CREEK VOLUNTEER CLEAN-UP

Saturday, May 16, 2026  
9AM – 12PM



**Volunteers needed!** Come join OneShoreline and the County of San Mateo's Public Works and Sustainability Department to pick up trash and create a healthier and more beautiful environment. Great opportunity for student volunteer hours! **Help clean up Colma Creek!**

**LOCATION:**

Meet at Utah Ave bridge, at the intersection of Utah and Harbor Way, near 180 Utah

**WHAT TO BRING:**

Come prepared to be outdoors for three hours. The following should be on your packing list:

- Sturdy, closed-toe shoes are required (ones you don't mind getting dirty!)
  - Dress in layers; long pants are recommended
  - Sun protection such as a hat, sunglasses, and sunscreen
  - Full reusable water bottle
- Gloves, pickers, bags, and refreshments will be provided!!



COUNTY OF SAN MATEO  
DEPARTMENT OF PUBLIC WORKS

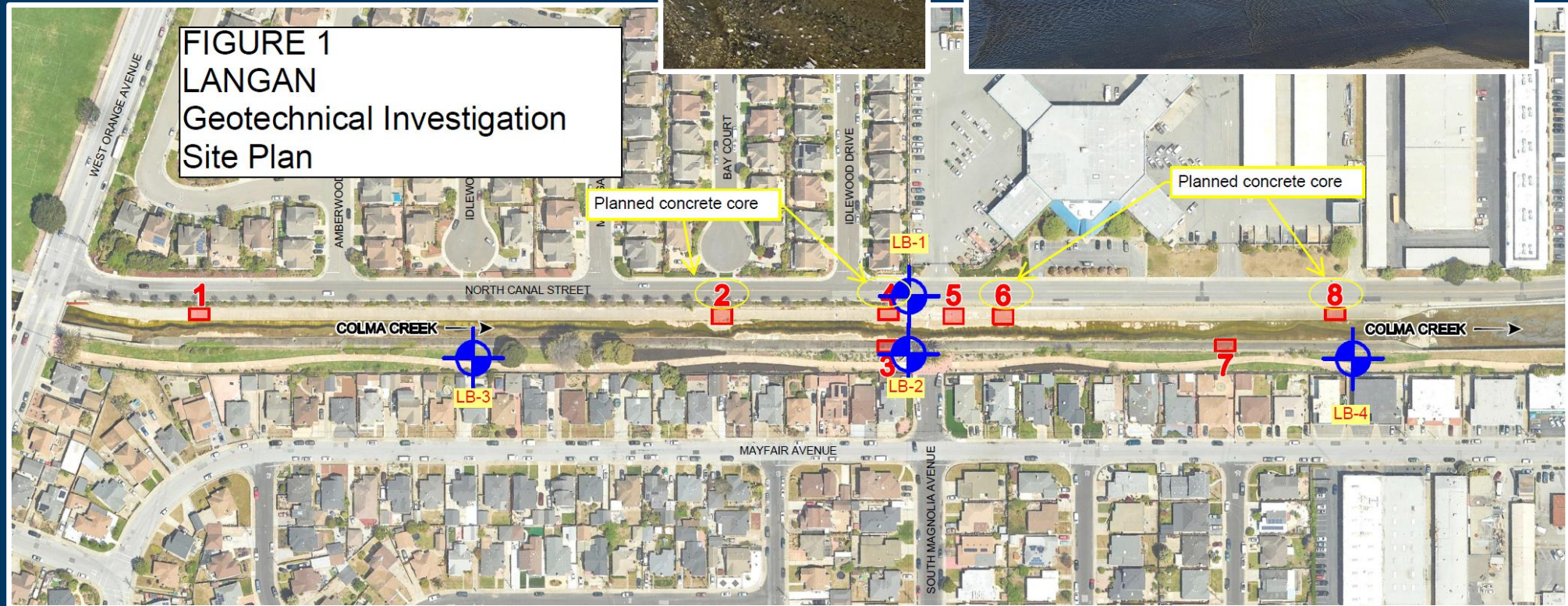


SAN MATEO COUNTY  
Sustainability  
Department

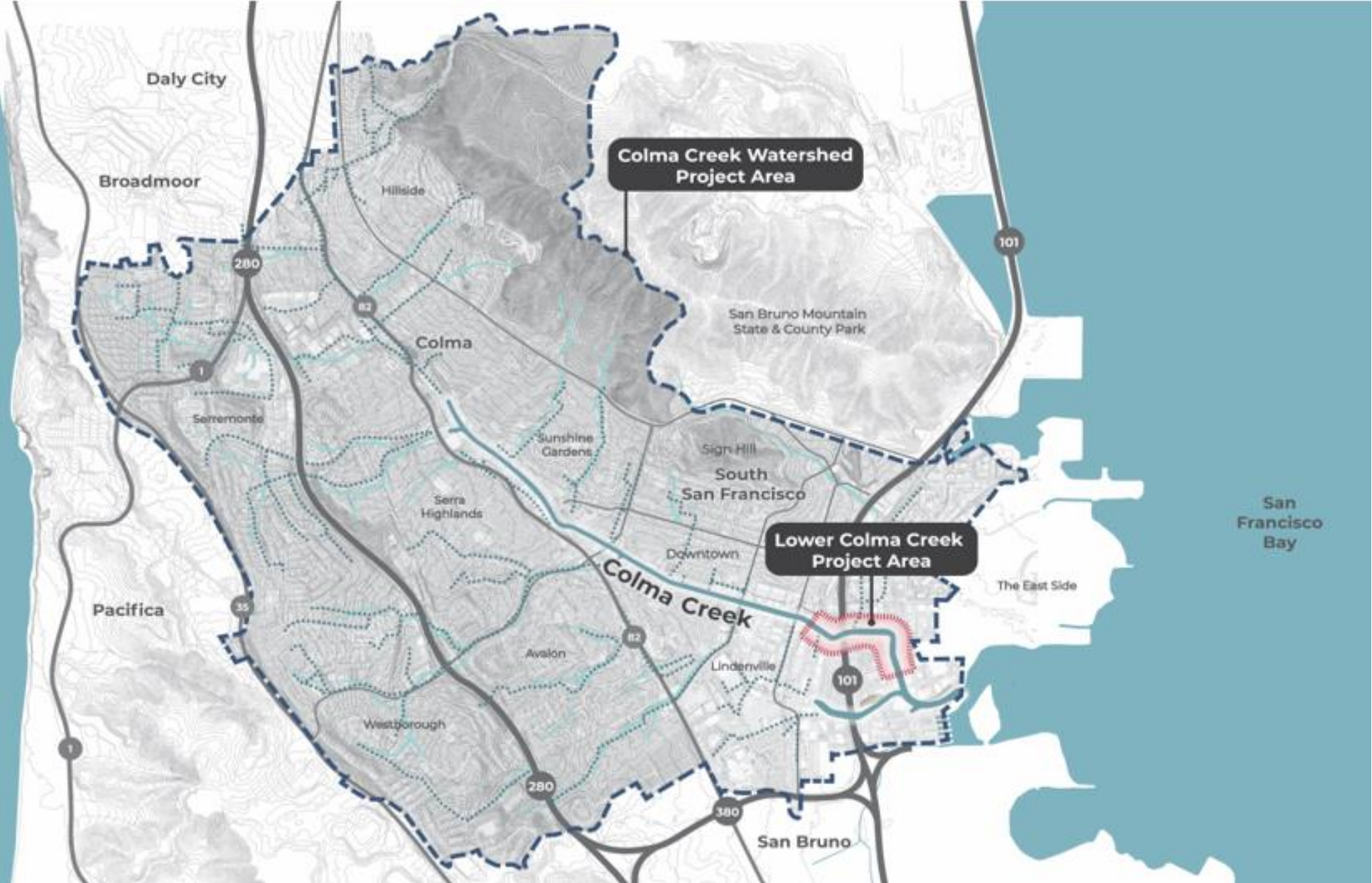
**Please RSVP contact:**  
ralbanese@smcgov.org

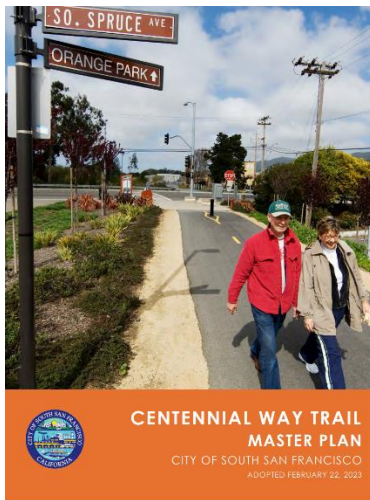
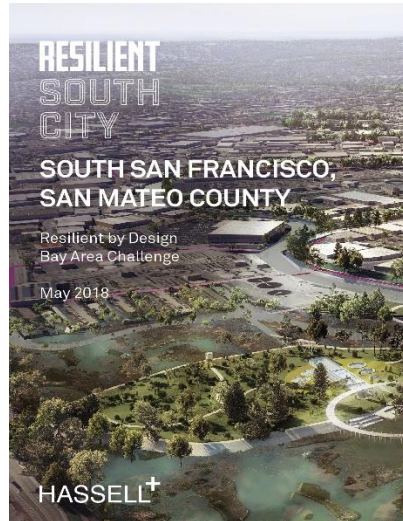
# 4. Colma Creek Condition Assessment

- Between Orange Memorial Park and Spruce Avenue voids located under wall, pending engineer recommendations
- Previous work: borings and cores fall 2025, radar survey 2024, initial study fall 2023



# 5. and 6. Lower Creek Resilience Projects and Watershed Plan





## Considering Diverse Benefits and Funding Opportunities



SAN FRANCISCO BAY  
RESTORATION AUTHORITY



Coastal  
Conservancy



Caltrans®



FEMA





## Community priorities shared:

- **New parks and open space**, spaces to gather
- **Increased visual and mobility access and recreation** along Colma Creek
- Transformation of Colma Creek to **support ecology & connection to the Bay**
- New **bike and pedestrian paths**
- Preserve **legacy of industrial uses** and **current business operations**
- **Community engagement** needs, including in person, on site events or activations

## Working Group 5

April 22

### Preliminary Project Concepts

Colma Creek Watershed Plan

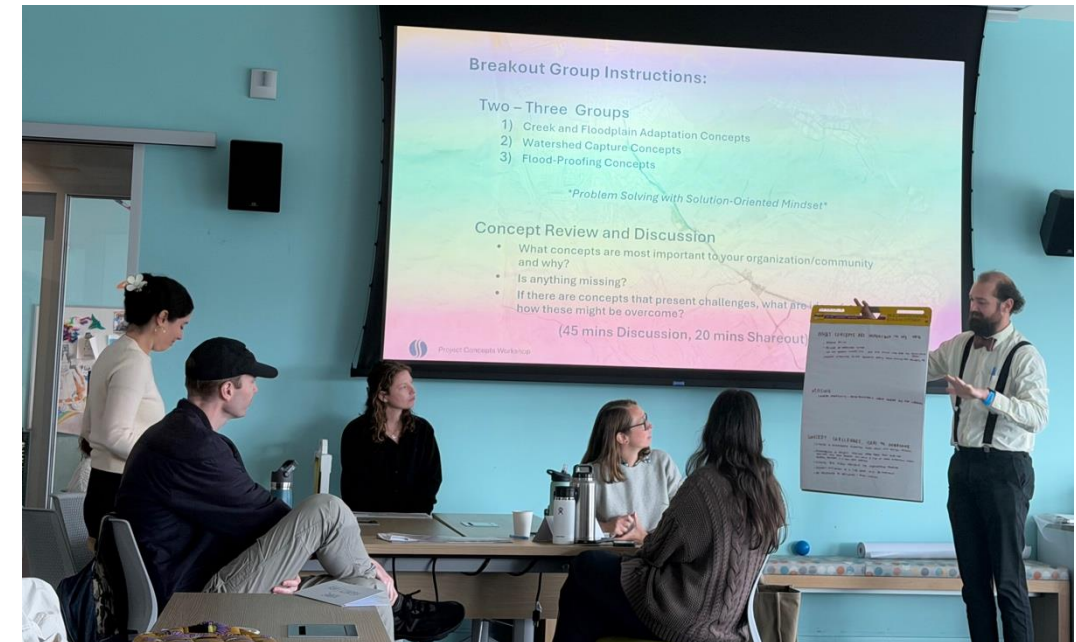
### Outcomes:

- Reviewing hydrology model results
- Informing list of concepts for analysis

## Working Group 6 June

### Project Alternatives

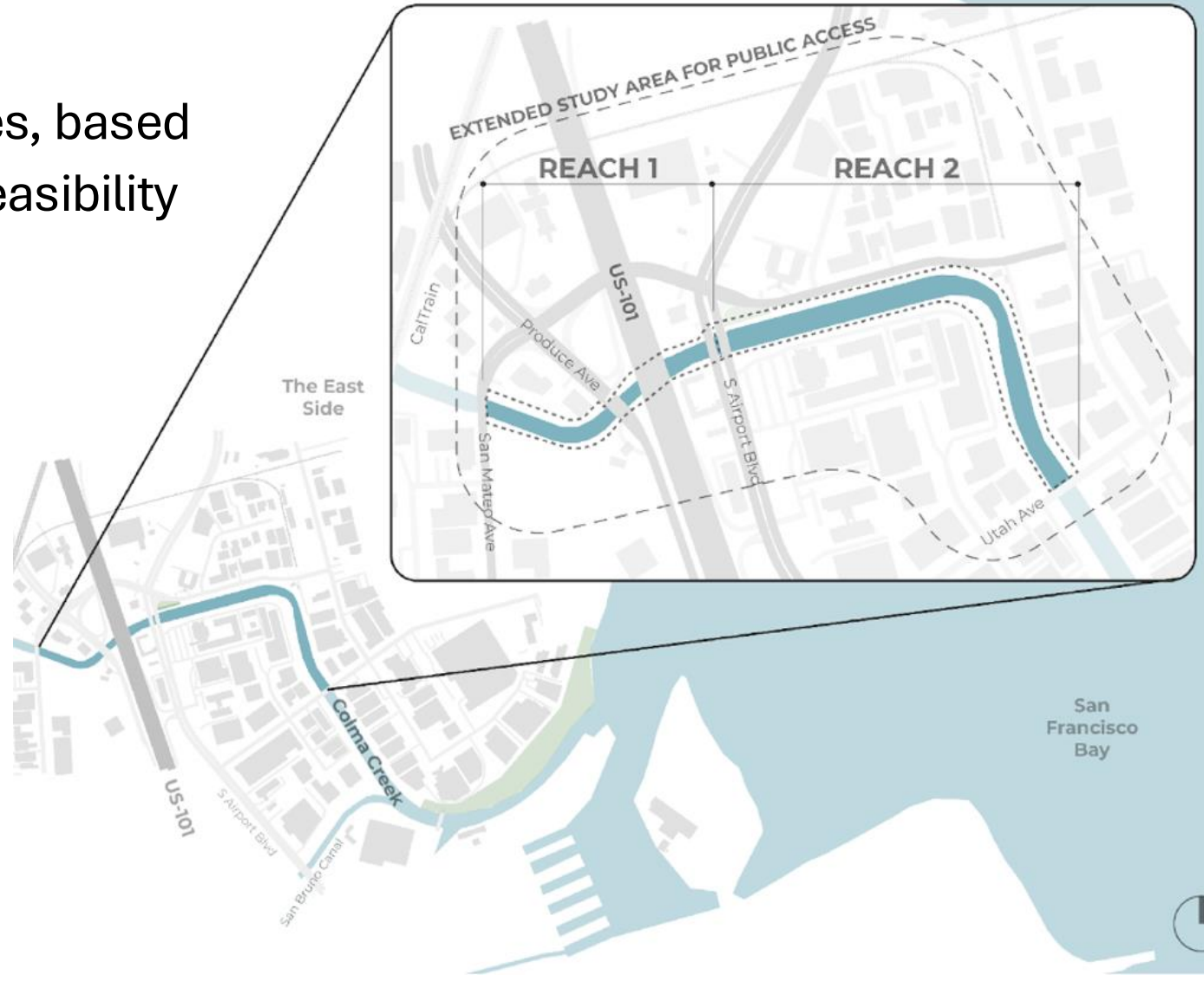
Lower Colma Creek Resilience Projects



# 5. Lower Creek Resilience Projects: San Mateo Ave to Utah Ave

## WHAT:

Develop conceptual plans for two reaches, based on established hydraulic and structural feasibility





**Manage flood risk** and build adaptability to sea level rise through resilient infrastructure along Colma Creek.



**Protect and enhance native species habitat** to improve ecological functions and resilience to the changing climate.



**Connect Colma Creek** to surrounding communities through expanded public access and enhanced safety.



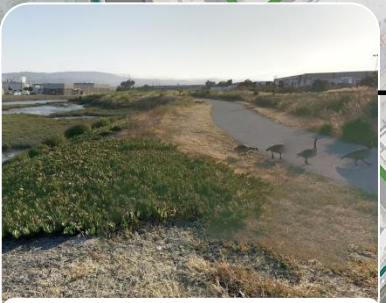
**Leverage investments** to transform Colma Creek into a regional amenity that supports community vitality and sustainable economic development.

# Proposed Long-Term Open Space + Connectivity



Lindenville Specific Plan

LCCRP Area

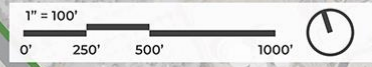


**KEY**

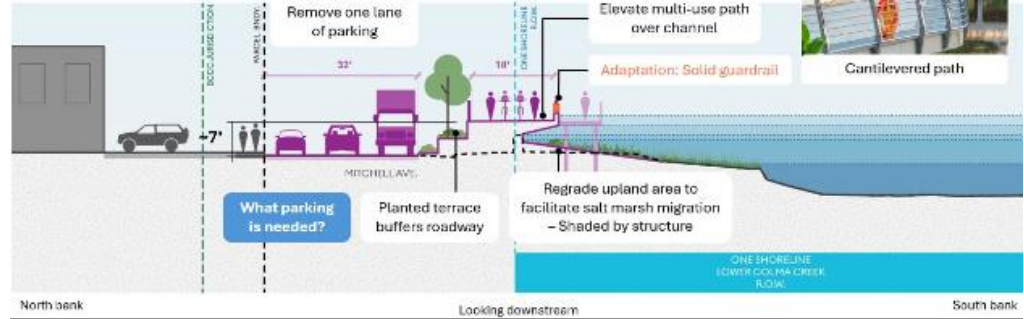
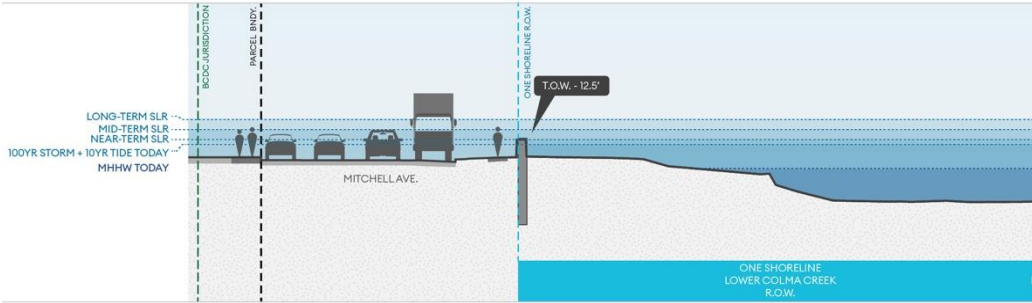
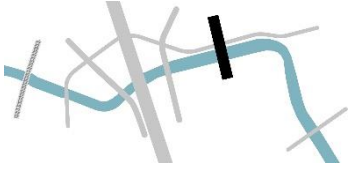
- Lower Colma Creek Project Area
- OneShoreline ROW
- Proposed Bikeways (Active South City, 2022)
- Existing Trails
- Existing Bikeways
- Public/Open Space Zoning (Shape SSF General Plan, 2022)

**Lindenville Specific Plan**

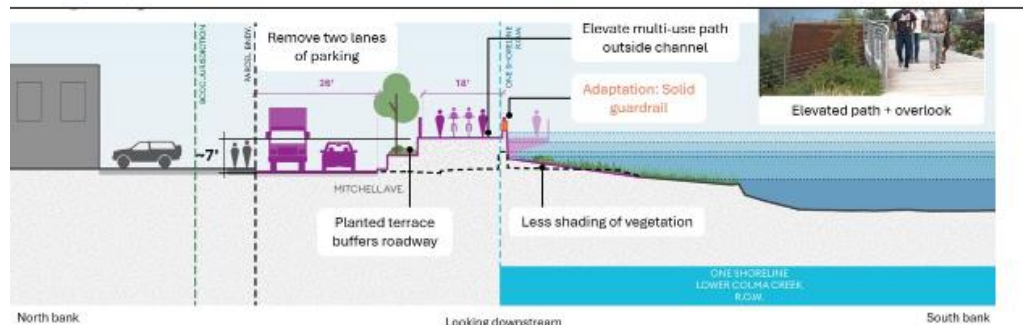
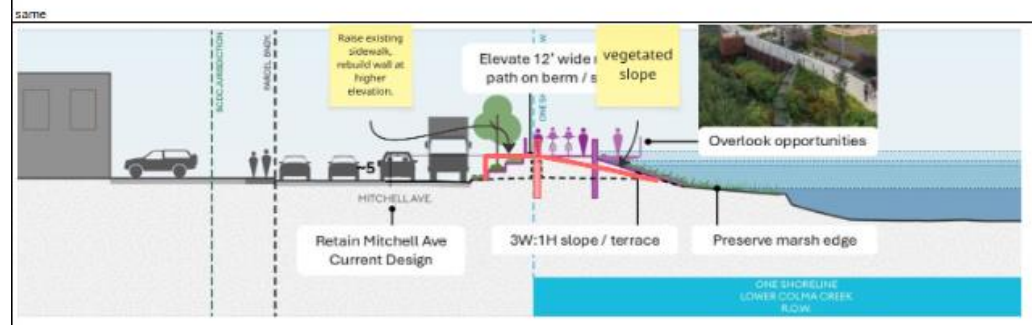
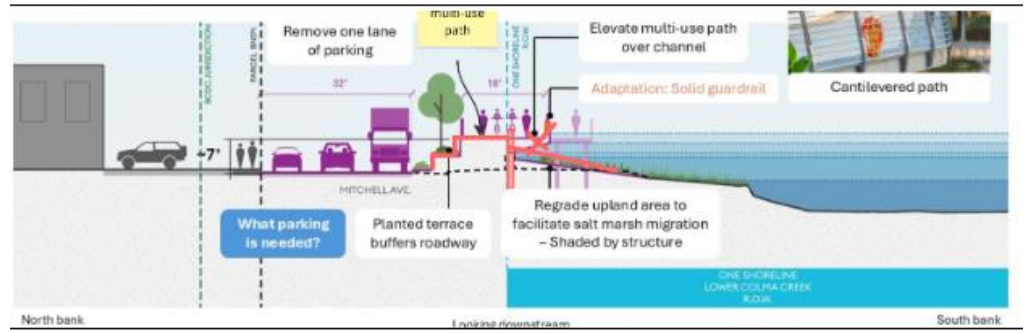
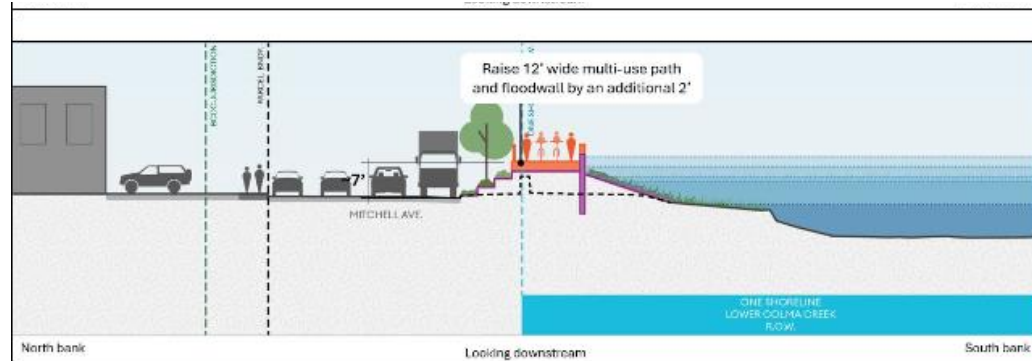
- Trails/Greenways
- Parks + Open Space
- Plan Area

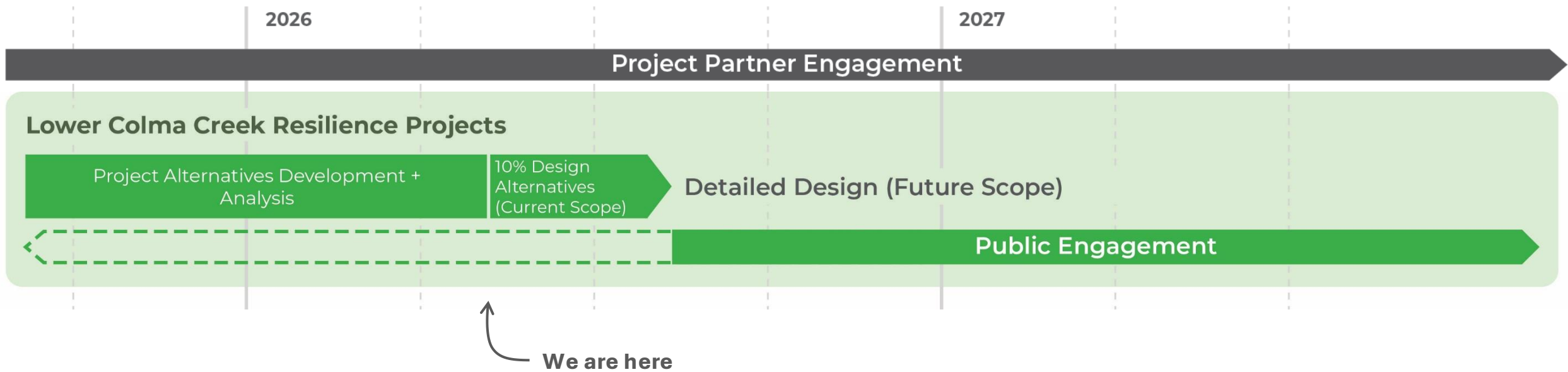


# Reach 2: Mitchell Ave – Existing Conditions



Mitchell Ave  
(looking upstream)





# 6. Watershed Plan

## WHAT:

A long-range, visionary blueprint that prioritizes projects, programs, and policies that improve public health and safety, enhance habitat, support water quality and supply, and increase public access and connection to the Creek.





## **Reduce flood risk**

Reduce flood risk through multi-benefit watershed solutions across the Colma Creek Watershed.



## **Create long-term resilience to climate change**

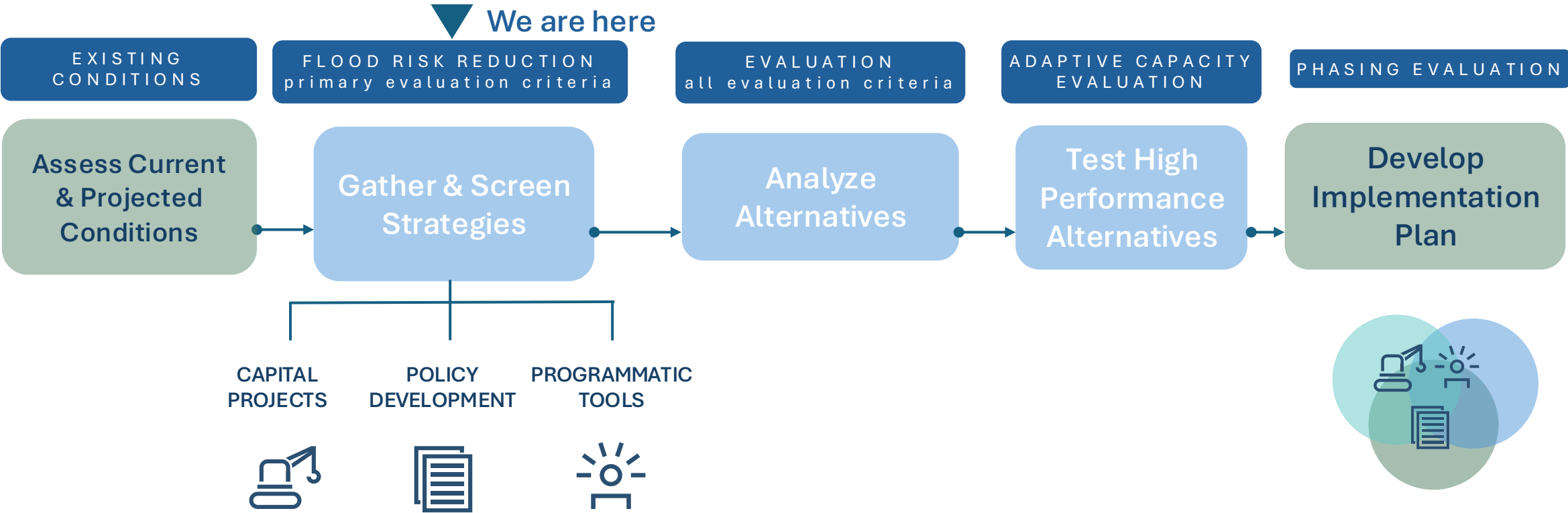
Create long-term resilience to climate change and improve water quality through policies, programs, and infrastructure that prioritizes nature-based solutions.



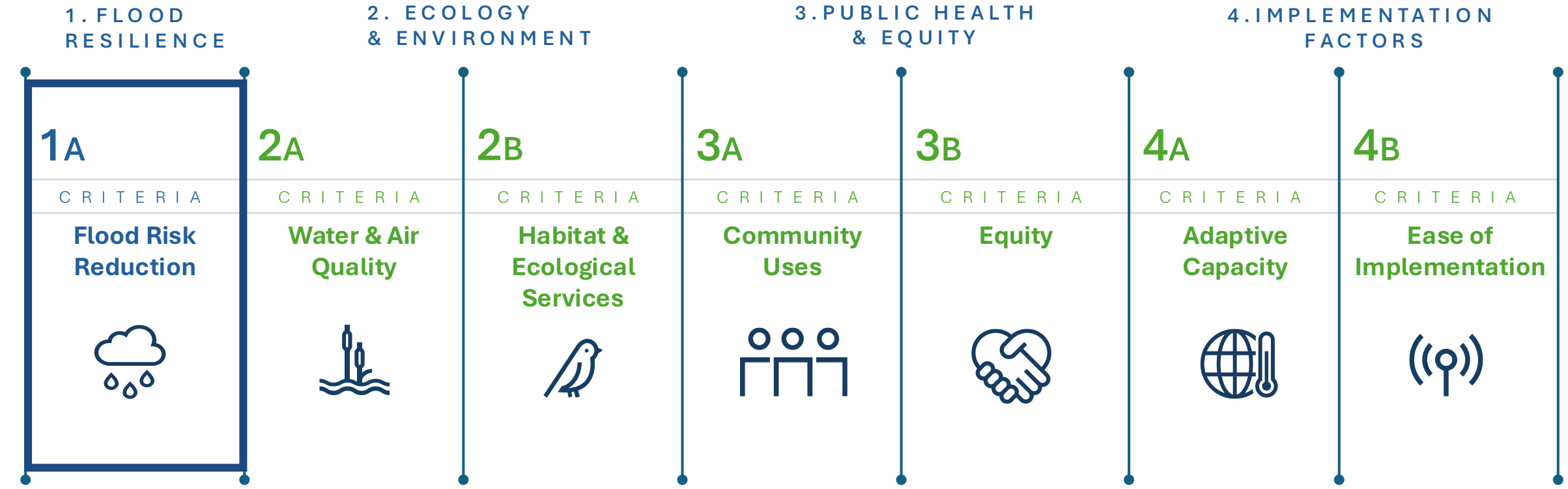
## **Connect Colma Creek to Surrounding Communities**

Connect Colma Creek to surrounding communities by increasing public access, recreational opportunities, and livability while improving public safety.

# Major Planning Steps



# Draft Planning-Scale Evaluation Categories



DRIVING CRITERION

# Flood Risk Reduction Metrics



## SCREENING CRITERION

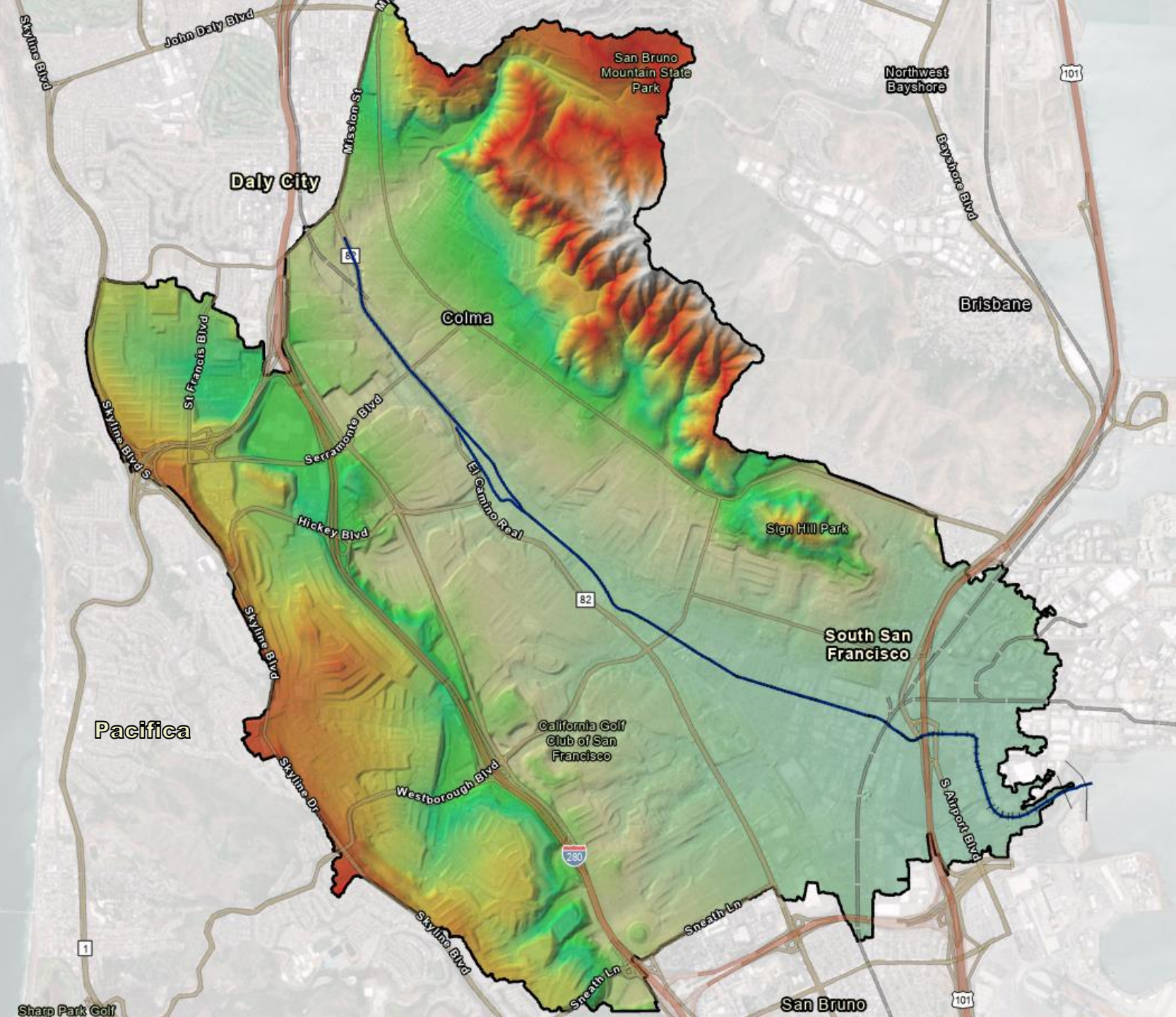
Flood Risk Reduction

## METRICS

- Volume Flooded from Channel
- Flooded Acres (Total and in Equity Priority Communities)
- Flooded Parcels with Critical Infrastructure

# Flood Model Updates

- **Hydrology and Hydraulic Model updates to improve accuracy and understanding of conditions and climate projections**
- **Assessing current system performance and capacity needs**
- **Analysis of potential concept impacts on flood risk exposure**
- **Project life considerations**
  - Near-Term: up to 2035 (Historic Event)
  - Mid-Term: up to 2075 (2050 Climate Scenario)
  - Long-Term: 2075+ (2100 Climate Scenario)



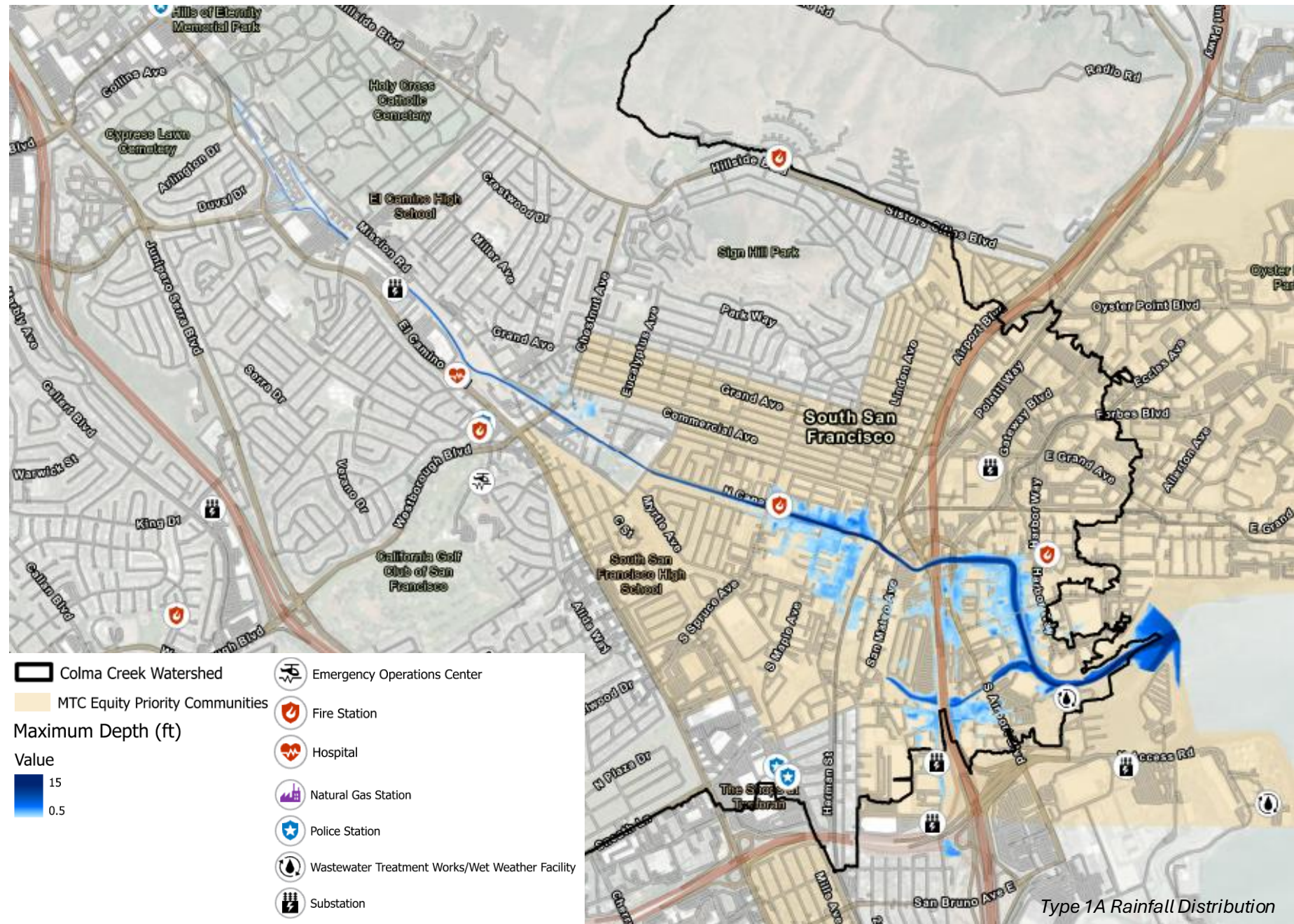
# Projected Flood Exposure

100yr 24hr Storm  
Historic Conditions

6.1" Rainfall  
0' SLR = 9.8' NAVD88

## Historic/Near-Term

Flooded Acres	128
Flooded Acres in Equity-Priority Communities	122
Flooded Parcels with Critical Infrastructure	4



Type 1A Rainfall Distribution

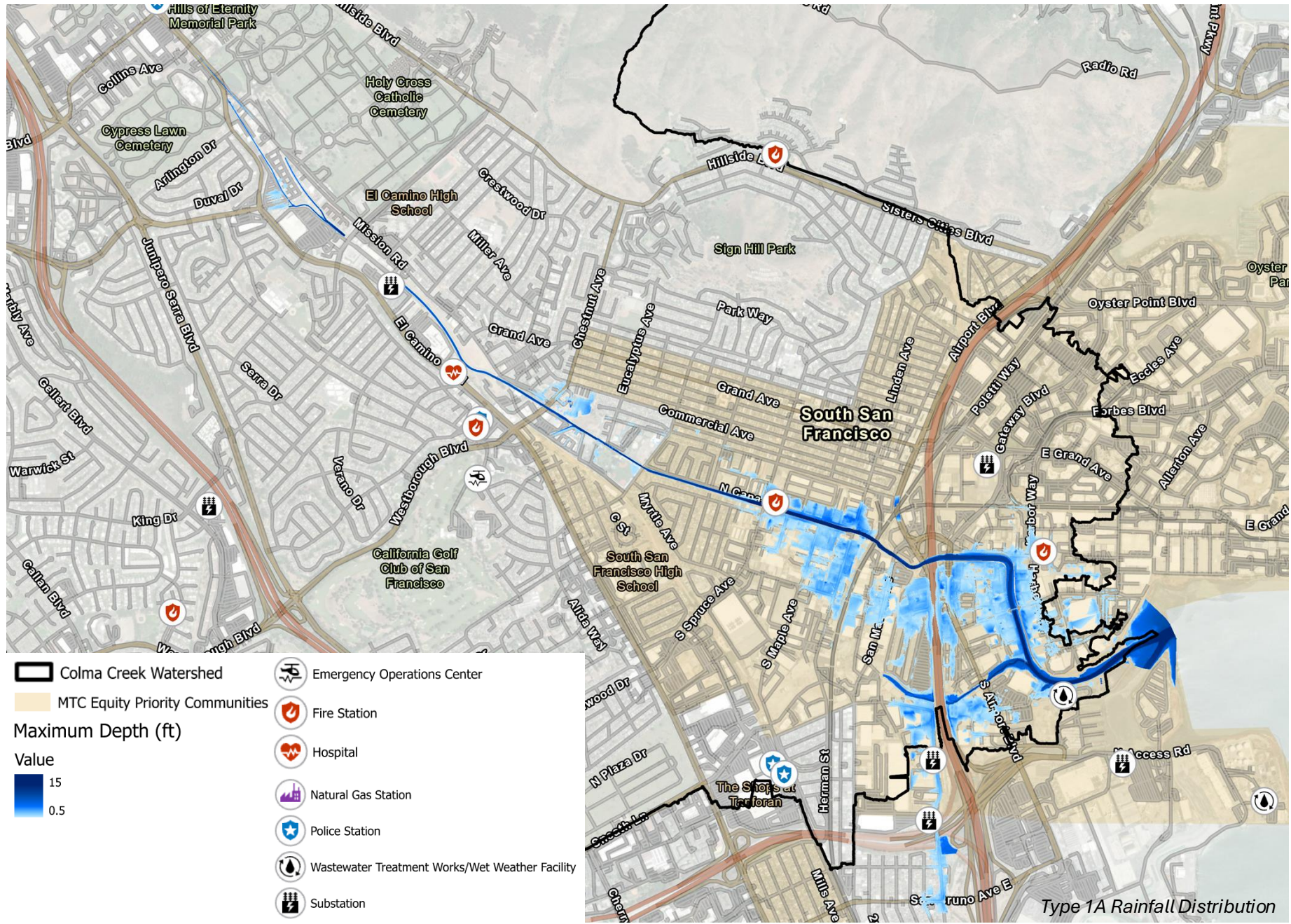
# Projected Flood Exposure

50yr 24hr Storm  
2050 Conditions

7.2" Rainfall

1.0' SLR = 10.8' NAVD88

Mid-Term	
Flooded Acres	210
Flooded Acres in Equity-Priority Communities	199
Flooded Parcels with Critical Infrastructure	5

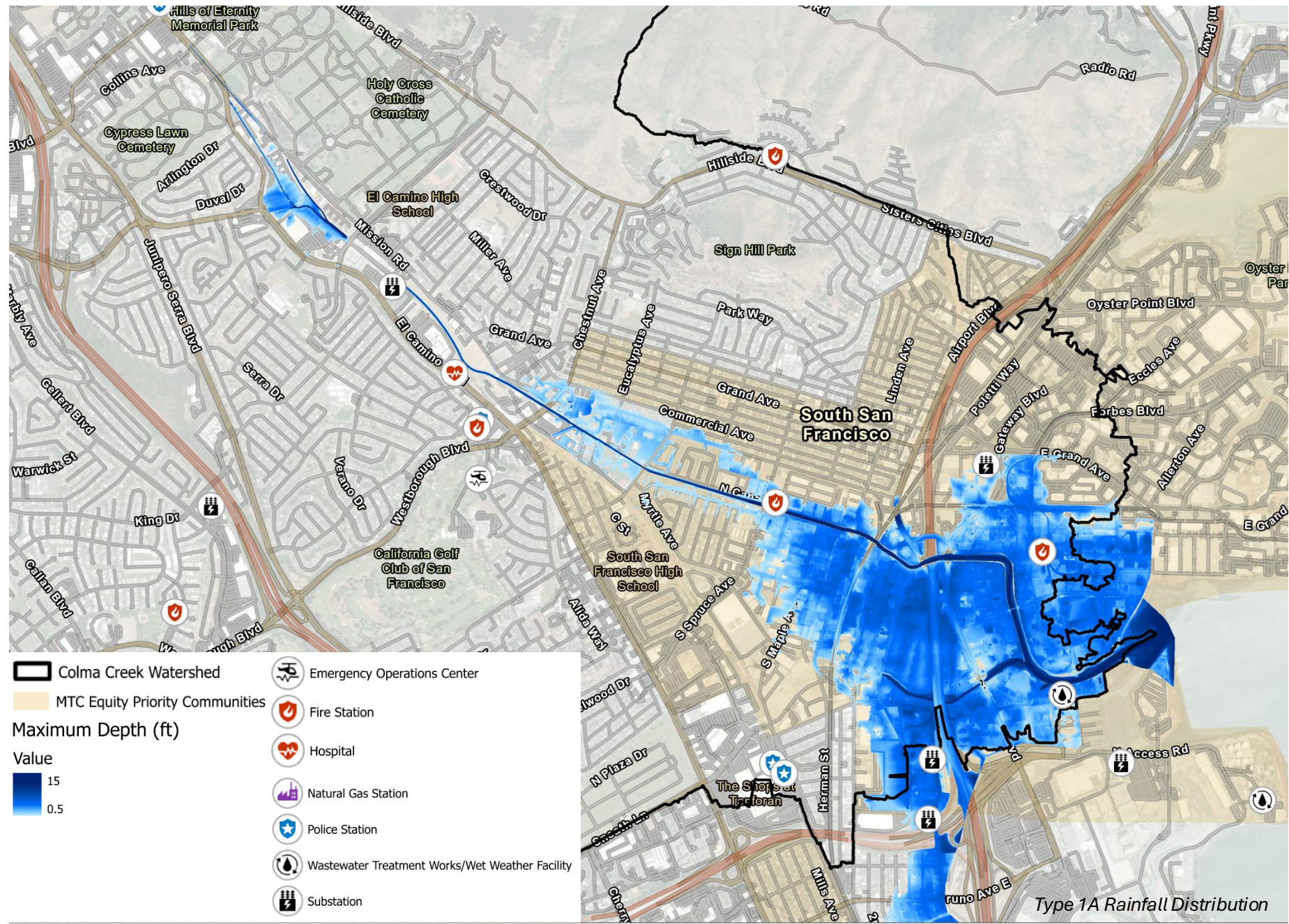


# Projected Flood Exposure

100yr 24hr Storm  
2100 Conditions

8.4" Rainfall  
4.8' SLR = 14.6' NAVD88

Long-Term	
Flooded Acres	746
Flooded Acres in Equity-Priority Communities	684
Flooded Parcels with Critical Infrastructure	6

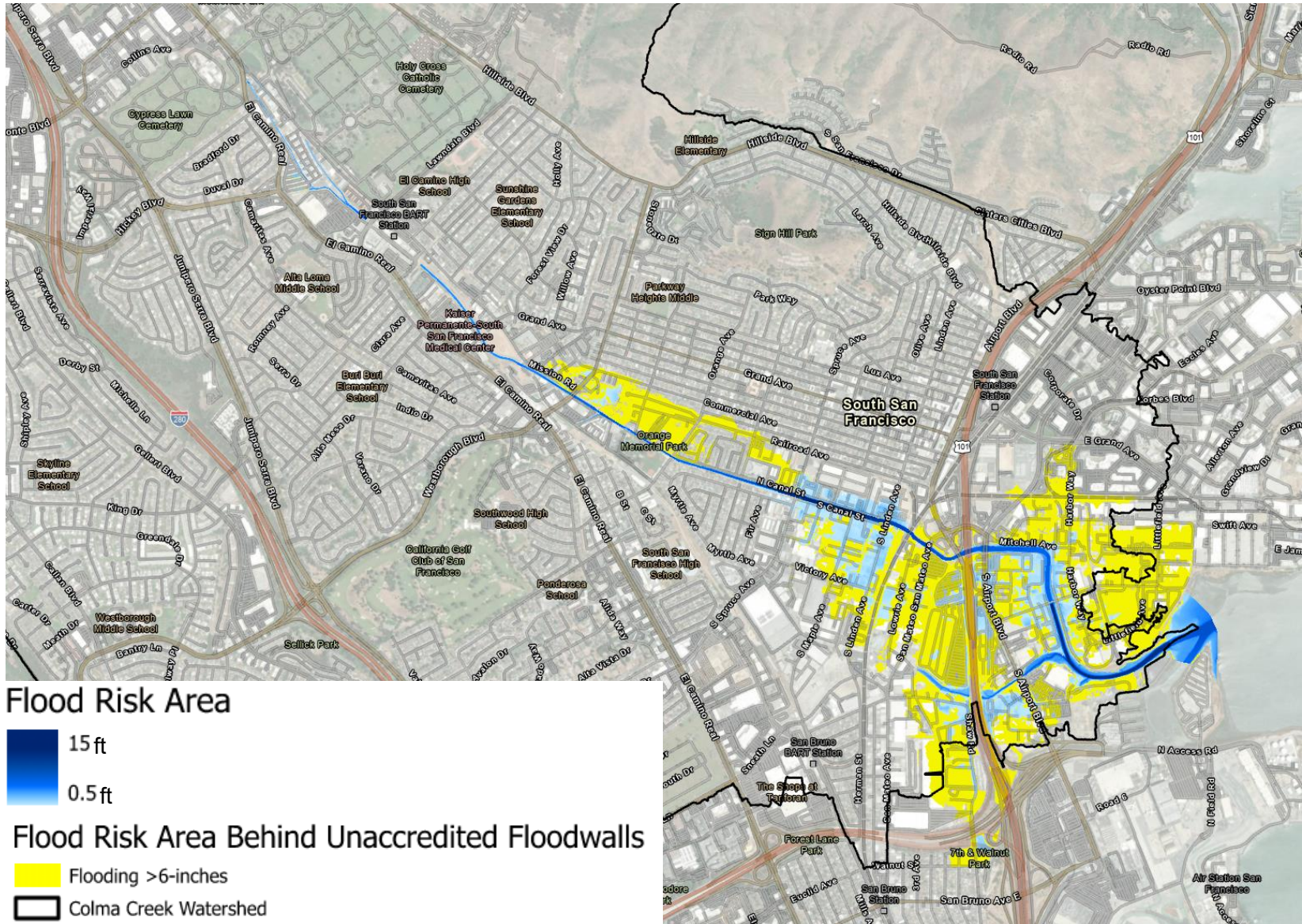


# Projected Flood Exposure 100yr 24hr Storm Historic Conditions

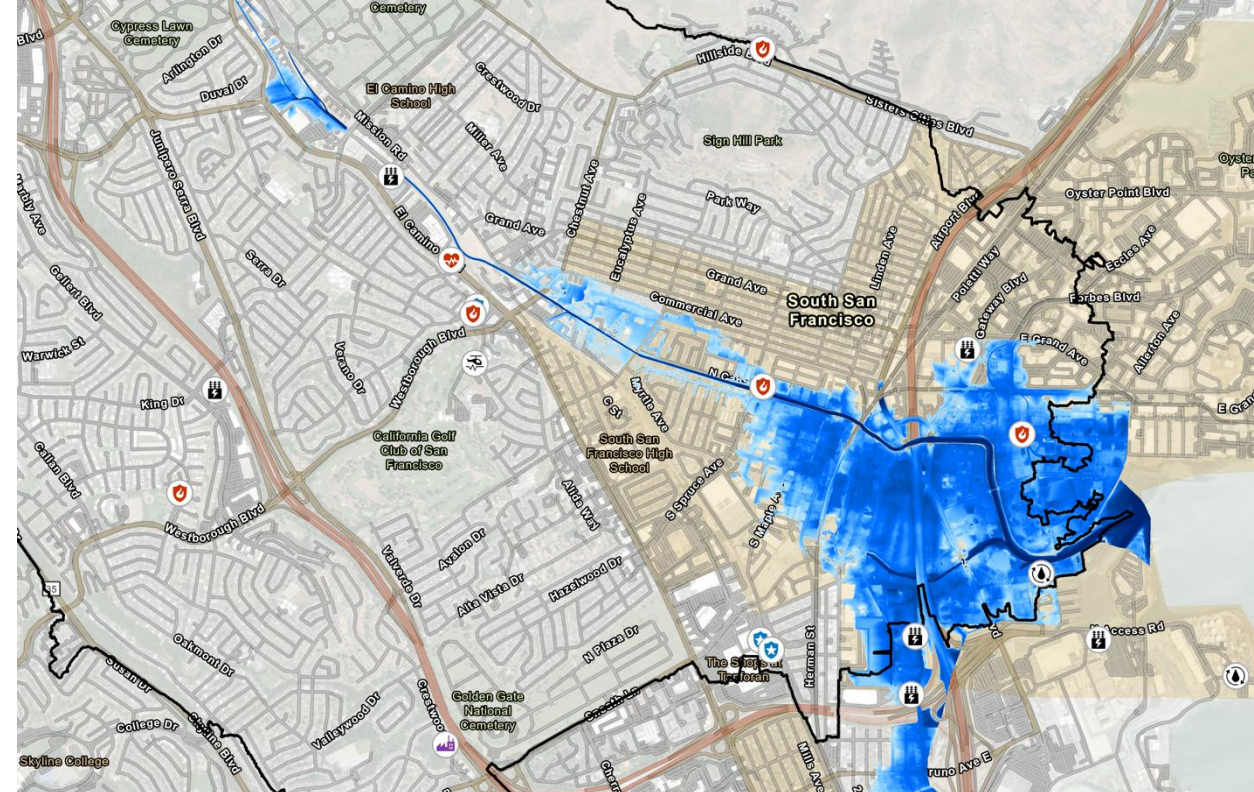
## Risk Behind Floodwalls

### Historic/Near-Term

	With unaccredited Floodwalls	Without unaccredited Floodwalls
Flooded Acres	128	505
Flooded Acres in Equity-Priority Communities	122	464
Flooded Parcels with Critical Infrastructure	4	6



Type 1A Rainfall Distribution



2100 100yr Storm: Stormwater-Driven Flooding

2100 100yr Storm: Stormwater + SLR-Driven Flooding

	Long-Term	
	Stormwater - Driven	Stormwater + SLR
Flooded Acres	279	746
Flooded Acres in Equity-Priority Communities	220	684
Flooded Parcels with Critical Infrastructure	3	6

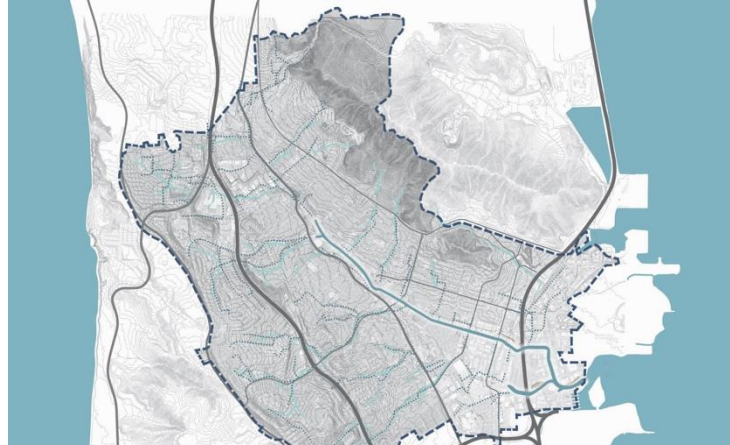
# Concept Types Overview



**Creek and Floodplain Adaptation**  
Concepts In/Adjacent to the Creek

Examples:

- Channel widening
- Greenbelts
- Floodable parks
- New berms or floodwalls



**Watershed Capture Concepts**  
Detention, Retention, and Reuse across the Watershed

Examples:

- Green schoolyards
- Floodable streets
- Grant programs for GSI on private parcels



**Flood Proofing and Flood Resilience**  
Reduce Residual Risk in Areas Adjacent to the Creek

Examples:

- Building code requirements
- Grant programs for retrofits
- Voluntary property acquisition policies or programs



# Creek and Floodplain Adaptation Concepts In/Adjacent to the Creek



# Colma Creek Greenbelt + Lower Colma Creek Resilience Projects

Focus Area: Creek and Floodplain Adaptation

Nature-based, blue-green infrastructure for long-term floodwater and stormwater management

Improved ecology + habitat

Active mobility on multi-use trails connecting Orange Memorial Park to the Bay Trail

Passive recreation + gathering opportunities along the creek



Multi-use path and overlook, Portland



Floodwall with planting and public access



Naturalized urban creek, Seattle



Multi-use path and overlook



Overlook, Mission Creek, SF



*Mission Creek Park North, San Francisco*



*Colma Creek Adaptation Project envisioned floodable open space in/adjacent to the creek*



*McKelvey Park Detention Basin, Mountain View*



*Hunters Point South Park, New York*

Transferred development rights or land acquisition may be used to manage flooding, while supporting public access, amenities, and habitat enhancements

## Colma Creek Greenbelt Overlay

- Encourage the transfer of development rights within the overlay zone to implement the Colma Creek Greenbelt vision
- Existing policy from Lindenville Specific Plan

## Property Acquisition

- Right of First Refusal Policies
- Voluntary Buy-Out Programs
- Targeted Acquisitions



*Restored floodplains, NC*



*Recreational amenities, Atlanta*



*Resilient redevelopment, NYC*

# Bay Shoreline Active Tide Control



*Bridgwater Tidal Barrier, UK. Source: UK Environment Agency*



*Self-regulating tide gates*



*Maeslant Tidal Barrier, Netherlands*



# Other Concepts

- Channel widening at bridges
- Subsurface detention/storage
- Floodwall accreditation

## Programs + Policies

- Increase building setbacks
- Creek stewardship programs



*Floodwalls downstream of South Airport Blvd*



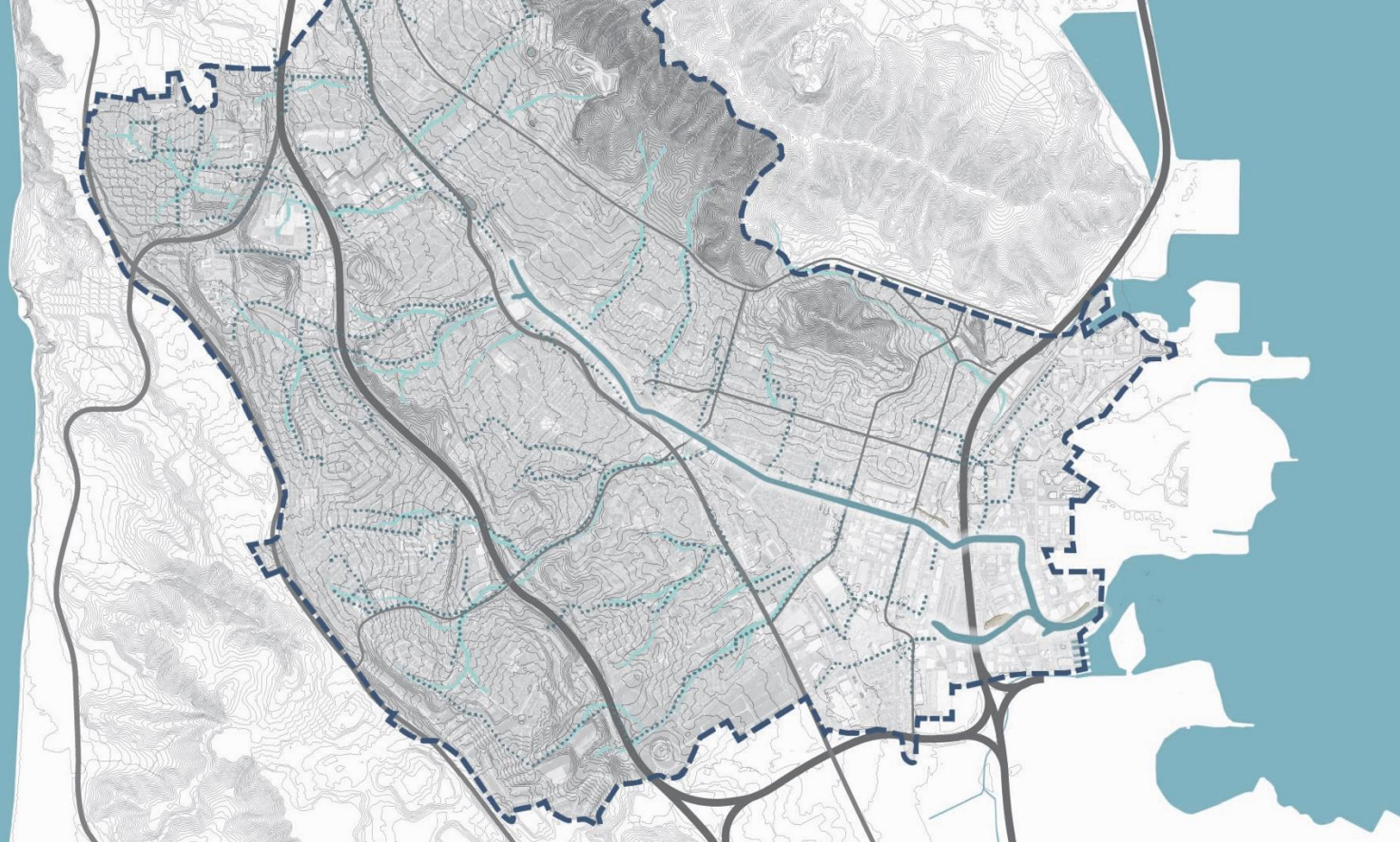
*Subsurface detention systems under new development*



*San Bruno Mountain Watch (SBMW) Colma Creek Collective. Source: SBMW*



*Channel widening at pinch points may relieve existing constraints on water flow, reducing areas of flood risk.*



# Watershed Capture Concepts

## Detention, Retention, and Reuse across the Watershed



# Large-Scale Green Stormwater Infrastructure

Focus Area: Watershed Capture

- Parks + open space
- Cemeteries
- Golf courses
- Parking lots/carparks
- Schoolyards



*Oso Del Oro Park, Fresno*



*Treasure Island Stormwater Gardens*



*San Bruno Creek naturalization*



*Detention under freeway, Mission Creek, San Francisco*



*Parking lot green infrastructure example*



Examples: Bioswale



Roundabout Rain Garden



Floodable Medians + Parkways

## Green Streets

Slow, filter, and treat runoff

Green infrastructure using vegetation, soil, and engineered systems

## Floodable Streets

Optimized to collect and convey more floodwater

Grey and green infrastructure

**Watershed Stewardship Program**

Community-based organizations, volunteers, property sponsors, etc.

**Workforce Training Program**

Conservation Corps, funding partnerships, college credits, etc.

**Watershed Education Program**

K-12 curricula, materials, and event programming

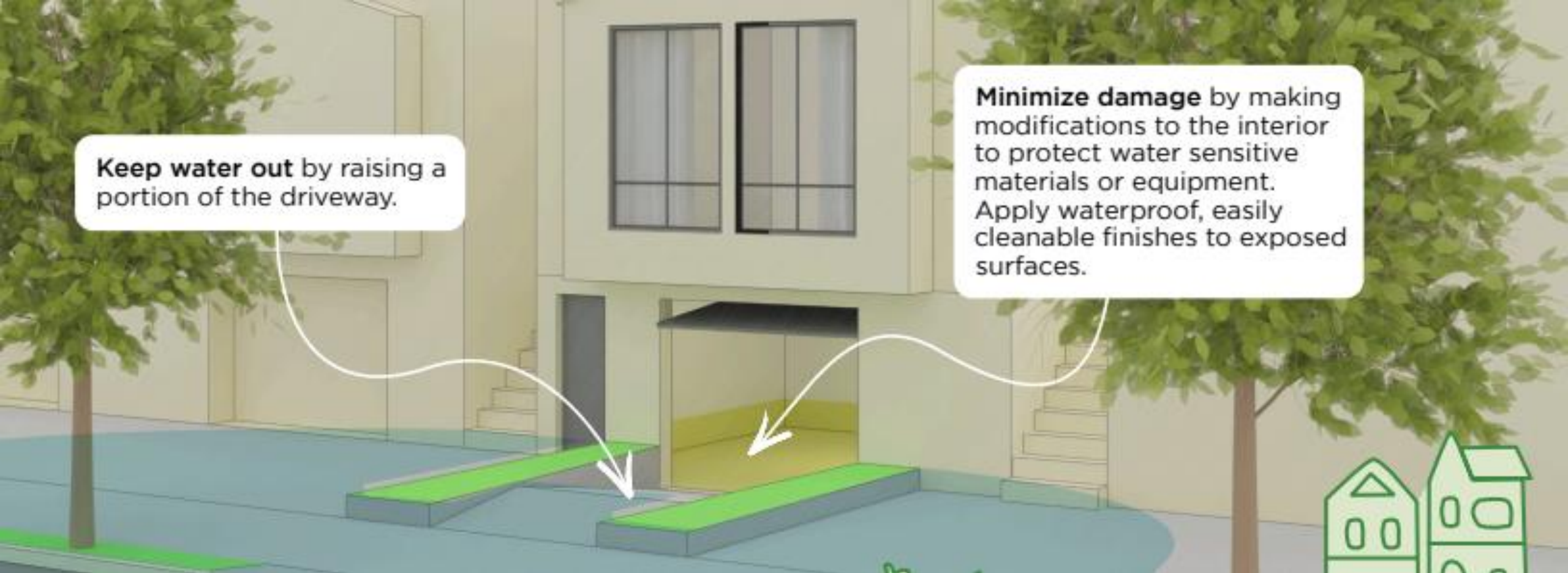
**Updated Green Infrastructure Guidelines, Requirements, and Design Standards**

Site-specific guidelines, low-impact development, and design standards for public and private projects

**Residential + Business Rainwater Harvesting Programs**

Support rainwater collection, treatment, and reuse





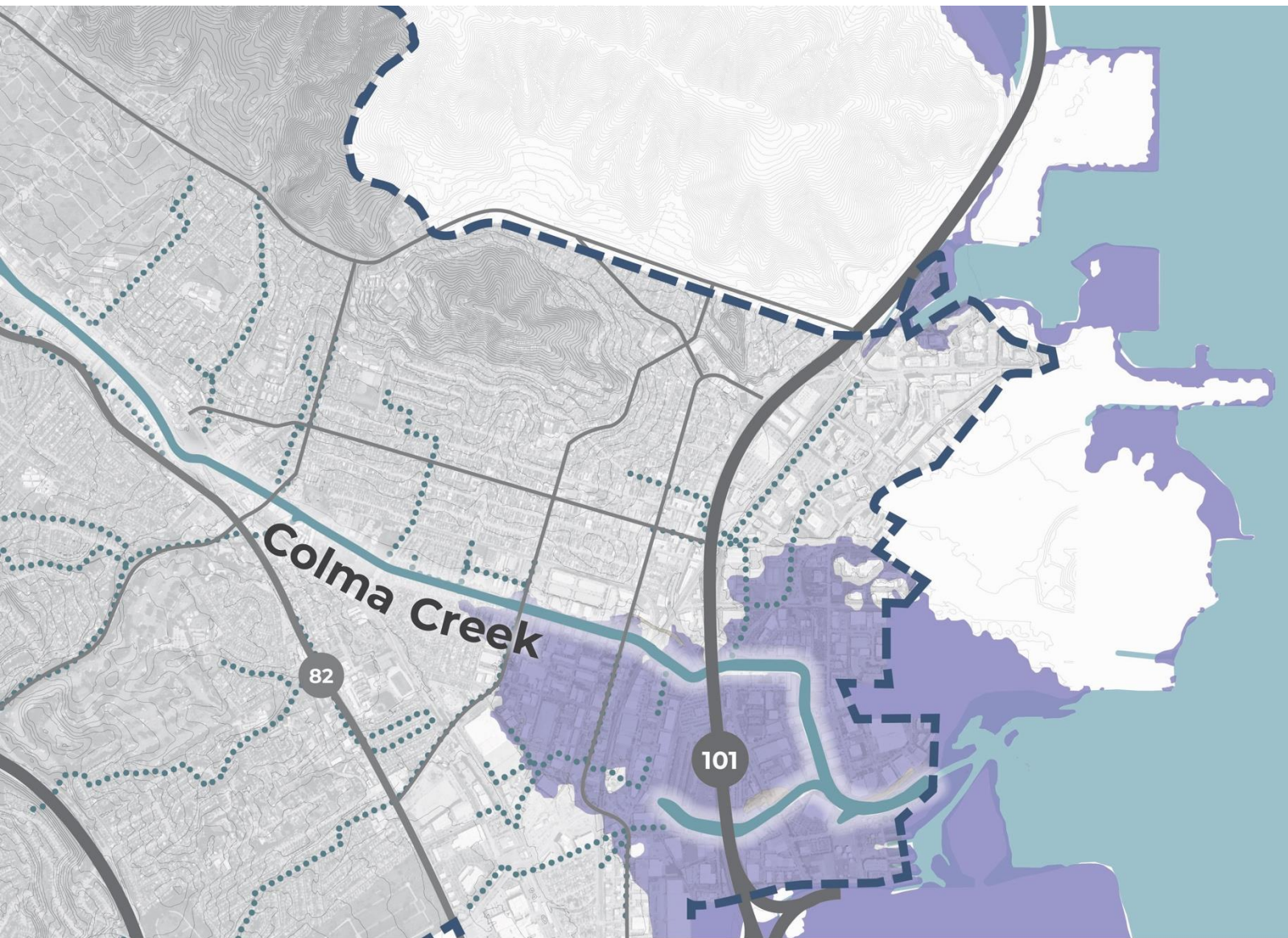
**Keep water out** by raising a portion of the driveway.

**Minimize damage** by making modifications to the interior to protect water sensitive materials or equipment. Apply waterproof, easily cleanable finishes to exposed surfaces.

# Flood Proofing + Flood Resilience

## Reduce Residual Risk in Areas Adjacent to the Creek





Existing SSF Municipal Code provides standards including:

- Floodproofing requirements for new and existing construction
- 100-ft Bay Shoreline Access buffer + 35-ft Creek Access buffer
- Site and levee grading requirements
- Stormwater conveyance infrastructure designed for 100-year event with 3 feet of sea level rise
- Low Impact Development (LID)
- No new impervious area requirements in parks & open spaces
- Requirements related to urban design and ecology

Add'l Building Code Requirements

Grant Programs for Retrofits

Resilient Design for Critical Infrastructure



Example: Flood-proofed building, Brooklyn, NY



Flood-proofed building, Boston

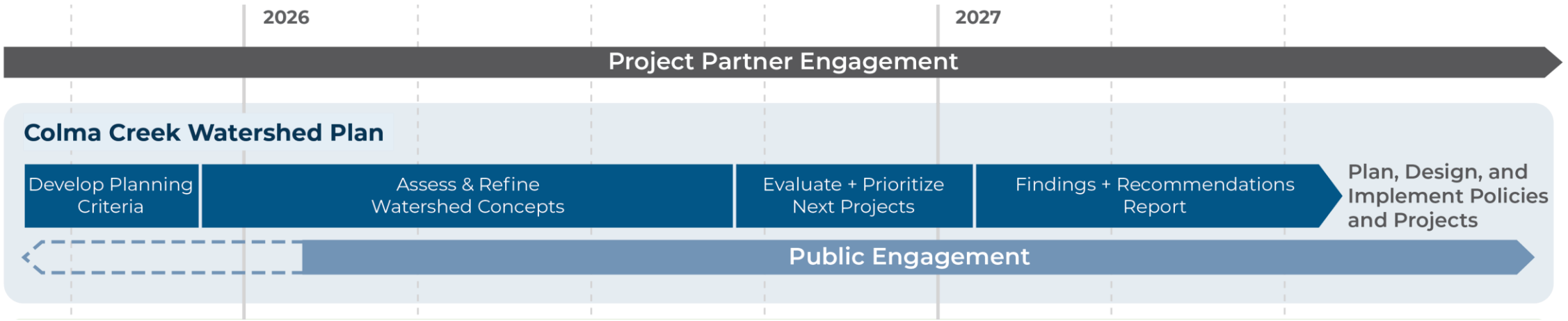


Example: San Francisco's Floodwater Grant Program

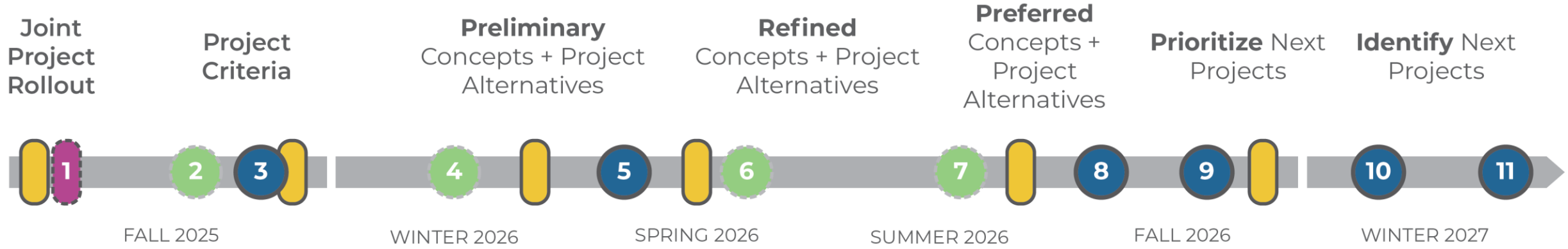


Example: OneShoreline Home Protection and Insurability Initiative

# Watershed Plan Timeline Overview



# Watershed Plan Timeline Overview



- In Person Working Group
- Virtual Working Group
- CCWP
- LCC
- Joint Project
- CCCAC



# General Public Engagement Next Steps

## **Public awareness campaign > Summer/Fall**

- Partner Toolkit
  - Social Media Posts, Newsletter Blurbs, Trivia, Videos
- Signage

## **Feedback from frontline communities > Fall**

- Questions to Inform Plan
- Presentation Roadshow to CBOs

# Agenda Item V. Update on Colma Creek Flood Zone Budget

		2022-23 (Actual)	2023-24 (Actual)	2024-25 (Actual)	2025-26 (Budget)	2025-26 (Actual)	2025-26 (Estimated)
<b>Revenue</b>							
	Taxes (Secured Property)	\$ 6,148,271	\$ 6,849,930	\$ 7,215,447	\$ 6,065,933	\$ 6,262,566	\$ 7,024,505
	Rent and Interest Income	\$ 362,046	\$ 1,668,118	\$ 2,550,999	\$ 562,046	\$ 1,430,600	\$ 1,131,258
	Inter-governmental Revenue	\$ 92,725	\$ 16,367	\$ 16,676	\$ 15,673	\$ 40,907	\$ 16,123
	State Grants	\$ 85,659	\$ -	\$ -	\$ -	\$ -	\$ -
	<b>Total Revenue</b>	<b>\$ 6,688,700</b>	<b>\$ 8,534,415</b>	<b>\$ 9,783,122</b>	<b>\$ 6,643,652</b>	<b>\$ 7,734,073</b>	<b>\$ 8,171,886</b>
<b>Flood Zone Management &amp; Project Delivery</b>		<b>\$ 109,470</b>	<b>\$ 127,453</b>	<b>\$ 236,913</b>	<b>\$ 383,933</b>	<b>\$ 179,473</b>	<b>\$ 503,300</b>
<b>Project Expenditures</b>		<b>\$ 555,373</b>	<b>\$ 447,918</b>	<b>\$ 1,335,259</b>	<b>\$ 2,843,048</b>	<b>\$ 1,570,722</b>	<b>\$ 2,610,000</b>
<b>Other Expenditures</b>							
	General Liability Insurance	\$ 6,286	\$ 7,091	\$ 8,447	\$ 12,000	\$ 10,925	\$ 14,000
	Debt Service on Bond	\$ 1,499,125	\$ 1,498,875	\$ 1,496,625	\$12,510,000	\$12,504,915	\$ -
	<b>Total Other Expenditures</b>	<b>\$ 1,505,411</b>	<b>\$ 1,505,966</b>	<b>\$ 1,505,072</b>	<b>\$12,522,000</b>	<b>\$12,515,840</b>	<b>\$ 14,000</b>
<b>Total Expenditures/Estimates</b>		<b>\$ 2,060,784</b>	<b>\$ 1,953,884</b>	<b>\$ 2,840,331</b>	<b>\$15,365,048</b>	<b>\$14,086,562</b>	<b>\$ 2,624,000</b>
<b>Fund Balance at End of Fiscal Year</b>		<b>\$ 34,864,652</b>	<b>\$ 41,143,496</b>	<b>\$47,818,334</b>	<b>\$36,245,664</b>	<b>\$41,465,845</b>	<b>\$47,013,731</b>

# Agenda Item V. Update on Colma Creek Flood Zone Budget

		2022-23 (Actual)	2023-24 (Actual)	2024-25 (Actual)	2025-26 (Budget)	2025-26 (Actual)	2026-27 (Proposed)
<b>Project Expenditures</b>							
Activity #	Activity Name						
1	<b>Routine Maintenance</b>						
	a. Regulatory Permits			\$ -	\$ 200,000	\$ 94,426	\$ 30,000
	b. Maintenance Tools and Equipment	\$ -	\$ 238	\$ 121	\$ 5,000	\$ -	\$ 5,000
	c. Maintenance & Minor Repairs	\$ 24,623	\$ 59,711	\$ 245,058	\$ 200,000	\$ 268,959	\$ 550,000
	d. Maintenance Agreements						
	City of South San Francisco	\$ -	\$ -	\$ -	\$ 250,000	\$ -	\$ 200,000
	Town of Colma	\$ -	\$ -	\$ -	\$ 25,000	\$ -	\$ 25,000
	e. Project Administration	\$ 172,088	\$ 186,452	\$ 219,381	\$ 50,000	\$ 101,544	\$ 100,000
2	<b>Mitigation Site Maintenance</b>						
	Annual Maintenance Activities	\$ 11,554	\$ 719	\$ 444	\$ 50,000	\$ 476	\$ 100,000
3	<b>Channel Discharge Pipe Repair/ Replacement</b>						
	Design & Permitting	\$ 7,689	\$ 16,281	\$ 36,794	\$ 18,206	\$ 1,307	\$ -
	Construction	\$ 307,287	\$ 135,485	\$ 628,179	\$ 56,821	\$ 140,679	\$ -
	Project Administration	\$ 32,132	\$ 49,032	\$ 129,792	\$ 90,208	\$ 11,611	\$ -
4	<b>Conditions Assessment</b>						
	Structural and Geotechnical Investigation			\$ 27,699	\$ 97,812	\$ 39,551	\$ -
5	<b>Resilience Projects: San Mateo Ave to Utah Ave</b>						
	Preliminary Design & Feasibility Study			\$ 47,793	\$ 1,200,000	\$ 515,211	\$ 600,000
	Design Development						\$ 500,000
6	<b>Watershed Plan</b>						
	Analysis & Plan Preparation			\$ -	\$ 600,000	\$ 396,957	\$ 500,000
<b>Total Project Expenditures/Estimates</b>		<b>\$ 555,373</b>	<b>\$ 447,918</b>	<b>\$ 1,335,259</b>	<b>\$ 2,843,048</b>	<b>\$ 1,570,722</b>	<b>\$ 2,610,000</b>



**Next scheduled Committee Meeting**  
**Tuesday, September 8, 2026**  
**3:00 p.m.**