

# Board of Directors Meeting

## San Mateo County Flood and Sea Level Rise Resiliency District

## AGENDA

May 18, 2026

4:00 PM

- 1. Roll Call**
- 2. Public Comment** Persons wishing to address the Board on OneShoreline-related matters not on this Agenda, as well as items listed under Action to Approve the Consent Agenda, may speak for up to two minutes; comments on Agenda items shall be heard during that item for up to two minutes.
- 3. Action to Set the Agenda and Approve the Consent Agenda**
  - A. Approve the Minutes of the April 27, 2026 OneShoreline Board meeting
- 4. Regular Business**
  - A. Authorize the CEO to execute a 3-year agreement for a not-to-exceed amount of \$400,000 with Haley & Aldrich for engineering services and management of infrastructure maintenance
  - B. Authorize the CEO to execute a 3-year agreement for a not-to-exceed amount of \$200,000 with H.T. Harvey & Associates for environmental compliance services for maintenance and construction activities
  - C. Discuss the status of the Fiscal Year 2025-26 Budgets for Operations, Flood Zones, and Capital Projects and the Fiscal Year 2025-26 Measure K grant Workplan
  - D. Discuss the Fiscal Year 2026-27 Budgets for Operations, Flood Zones, and Capital Projects and Fiscal Year 2026-27 Measure K grant Workplan that are to be presented to the Board for approval on June 22, 2026
- 5. Chair's Report \***
- 6. CEO's Report \***
- 7. Board Member Reports and Items for a Future Agenda \***
- 8. Adjournment**

## **Agenda Item 4A: Authorize the CEO to execute a 3-year agreement for a not-to-exceed amount of \$400,000 with Haley and Aldrich, Inc. for engineering services and management of infrastructure maintenance**

### **The need for this agreement**

- **Upon establishment, OneShoreline assumed the assets and liabilities of the former San Mateo County Flood Control District, including infrastructure within the Colma Creek, San Bruno Creek, and San Francisquito Creek Flood Zones.**
- **Since that time, the County Department of Public Works supported OneShoreline's need to maintain its assets at a cost that averaged \$1.2 million per year. This County support is ending on June 30, 2026, after which time OneShoreline will contract separately for infrastructure engineering and management services, environmental services, and routine maintenance, which are cumulatively estimated to cost an average of \$800,000 annually for three years.**
- **At its April 27, 2026 meeting, the OneShoreline Board authorized the CEO to execute an agreement for routine maintenance services.**

### **Procurement process**

- **In response to Request for Proposals for the engineering and management of infrastructure maintenance, OneShoreline received two proposals; following interviews, the firm of Haley & Aldrich was ranked the highest.**

## The terms, costs, and cost oversight of the proposed Agreement

- Under the proposed Agreement, Haley & Aldrich will provide routine maintenance specifications, field team coordination, and reporting, and will oversee the routine maintenance contractors the Board authorized at its April 27, 2026 meeting.
- Haley & Aldrich will also support asset management activities including condition assessment, infrastructure inventory, and maintenance tracking to inform maintenance and capital planning.
- Staff will develop an annual workplan with Haley & Aldrich, including provisions for emergency work.



The Agreement has a not-to-exceed amount of \$400,000, and costs will be incorporated into annual budgets or emergency authorizations. Work related to the Flood Zones will be funded by Flood Zone property taxes, and work outside the Flood Zones will be funded by the Operating Budget or partner reimbursements and grants.

## **Agenda Item 4B: Authorize the CEO to execute a 3-year contract for a not-to-exceed amount of \$200,000 with H.T. Harvey & Associates for environmental compliance services for maintenance and construction activities**

### **The need for this agreement**

- **As described in the previous Agenda item, to address an upcoming gap in services created by the expiring agreement with County DPW, OneShoreline will contract separately for infrastructure engineering and management services, environmental services, and routine maintenance, which are cumulatively estimated to cost an average of \$800,000 annually for three years.**



### **Procurement process**

- **On March 12, 2026, staff released a Request for Proposals for infrastructure management and environmental services. Four proposals were received for environmental services.**
- **Following review of proposals and interviews, H.T. Harvey & Associates was ranked the highest.**

## The terms, costs, and cost oversight of the proposed Agreement

- Under this Agreement, H.T. Harvey will provide biological and cultural monitoring and pre-construction training during the activities of the routine maintenance contractors the Board authorized at its April 27 meeting.
- H.T. Harvey will also support permitting, compliance, and environmental mitigation needs.
- Staff will develop an annual workplan with H.T. Harvey, including provisions for emergency work, encompassing both the monitoring and permitting activities described above.

The Agreement has a not-to-exceed amount of \$200,000, and costs will be incorporated into annual budgets or emergency authorizations. Work related to the Flood Zones will be funded by Flood Zone property taxes, and work outside the Flood Zones will be funded by the Operating Budget or partner reimbursements and grants.



## Agenda Item 4C – FY25-26 Budgets and Workplan

### OPERATING BUDGET: FY25-26 Approved and Estimated Year-End

Budget item	Approved FY2025-26	Estimated Year-End FY2025-26
Revenue	\$2,701,375	\$2,994,881
Expenses – Net Personnel	\$1,076,591	\$778,339
Expenses – Net Operations & Support	\$1,517,008	\$856,199
Total Expenses	\$2,593,599	\$1,634,538
End of FY Balance (reserves)	\$5,435,044	\$6,085,905

# FLOOD ZONES BUDGET: FY25-26 Approved and Estimated Year-End

	Colma Creek		San Bruno Creek		San Francisquito Creek	
Budget item	Approved FY25-26	Estimated FY25-26 Year-End	Approved FY25-26	Estimated FY25-26 Year-End	Approved FY25-26	Estimated FY25-26 Year-End
Revenue	\$6,643,651	\$7,283,360	\$978,709	\$982,276	\$528,802	\$555,723
Expenses	\$15,716,433	\$14,973,281	\$1,532,017	\$1,018,925	\$1,013,195	\$967,656
End of FY Balance (reserves)	\$36,444,209	\$40,128,413	\$3,437,280	\$4,070,932	\$1,158,373	\$1,315,417

# CAPITAL PROJECTS BUDGET

## FY25-26 Approved and Estimated Year-End

Bayfront Canal & Atherton Channel Project (BCACP)

Millbrae & Burlingame Shoreline Resilience Project (MBSRP)

Flood Early Warning System (FEWS)

Budget item	Approved FY25-26	Estimated FY25-26 Year-End
Revenue	<p>BCACP \$6,900</p> <p>MBSRP \$1,451,090</p> <p>FEWS \$352,379</p> <p>Total \$1,810,369</p>	<p>BCACP \$4,362</p> <p>MBSRP \$1,015,545</p> <p>FEWS \$365,726</p> <p>Total \$1,385,633</p>
Expenses (Capital Outlay)	<p>BCACP \$126,560</p> <p>MBSRP \$1,451,090</p> <p>FEWS \$173,100</p> <p>Total \$1,750,750</p>	<p>BCACP \$71,756</p> <p>MBSRP \$1,015,545</p> <p>FEWS \$175,386</p> <p>Total \$1,252,687</p>
End of FY Balance	<p>BCACP \$40,190</p> <p>MBSRP \$0</p> <p>FEWS \$179,279</p> <p>Total \$219,469</p>	<p>BCACP \$85,919</p> <p>MBSRP \$889,089</p> <p>FEWS \$190,340</p> <p>Total \$1,165,348</p>

**Agenda Item 4C – FY25-26 Workplan: In Nov. 2024, OneShoreline was awarded a 3-year \$2,250,000 Measure K grant by San Mateo County for tasks and activities in an annual Workplan approved by the Board. The FY2025-26 Workplan included:**

**Task 1: Land Use and Project Planning for Future Climate-Driven Conditions**

Title/Scope of Work	Partners	Deliverables	Status and Accomplishments
Review and comment on draft Peninsula Resilience Planning Project (PREP) General Plan Safety Elements, Environmental Justice (EJ) Elements, city land use docs	Safety Element: <b>County</b> and 9 cities; EJ Elements: <b>County</b> and 3 cities; and local jurisdictions proposing land use updates	Comment letters on PREP documents and EJ Elements; summary notes of meetings attended	Participated in PREP Steering Committee; provided comments on County, Belmont, and Burlingame Safety Element Updates. Participated in meetings on EJ Elements; will comment on EJ documents when available.
Review and comment on Plan Princeton document	County	Comment letters on draft Plan; summary of meetings attended	Met regularly with County Planning (Admin Draft Plan not yet available)
Create Public Infrastructure Guidance for stormwater, roads, wastewater/water recycling systems ( <b>OneShoreline</b> )	County, participating cities, C/CAG, Caltrans, San Mateo RCD, Silicon Valley Clean Water, Bay Area Clean Water Agencies	Public Infrastructure Guidance documents listed at right; summaries of meetings and presentations	<ul style="list-style-type: none"> <li>• Formed and led meetings of multi-jurisdictional Asset Advisory Groups to provide input</li> <li>• Developed, circulated Draft Hazards Chap.</li> <li>• Admin Draft in May 2026</li> <li>• Public Draft in September 2026</li> </ul>
Support update to Local Hazard Management Plan (LHMP) and OneShoreline’s LHMP Annex	<b>County</b> and all participating cities	Draft LHMP, summary of meetings attended	<ul style="list-style-type: none"> <li>• Provided comments on Draft LHMP</li> <li>• Updated OneShoreline’s Annex</li> <li>• Reviewed LHMP Sea Level Rise Hazard Profile and Flood Hazard Profile</li> </ul>

## Task 2: Advance Multi-Jurisdictional Climate Resilience Projects

Title/Scope of Work	Partners	Deliverables	Status and Accomplishments
Regional Shoreline Adaptation Plan (RSAP): Brisbane Shoreline Resilience Plan <b>(OneShoreline)</b>	Brisbane, San Francisco, South San Francisco (SSF), Caltrans	Completed funding agreement with the CA Ocean Protection Council (OPC)	<ul style="list-style-type: none"> <li>Signed agreement with OPC to fund Brisbane Shoreline Resilience Plan</li> <li>Secured SF Bay Restoration Authority funds for Brisbane Living Shoreline Project</li> </ul>
RSAP: Southern Bayside Cities Shoreline Resilience Plan <b>(OneShoreline)</b>	EPA, Menlo Park, Redwood City (RWC), San Carlos, Belmont	Completed grant application submitted to the OPC	Grant awarded; funding agreement with OPC underway
Millbrae and Burlingame Shoreline Resilience Project <b>(OneShoreline)</b>	Millbrae, Burlingame, SFO, property owners, Chamber of Commerce, environmental nonprofits	Public mtgs on prelim. Least Environmentally Damaging Practicable Alternative (LEDPA), summary description of LEDPA	Advanced conceptual design and completed Admin Draft Environmental Impact Report (EIR); ongoing consultation with regulatory agencies, cities, SFO, and other stakeholders
Redwood Shores Sea Level Rise Protection Project and City of San Mateo RSAP	<b>RWC</b> , San Carlos, Belmont, County, S.V. Clean Water, SamTrans; <b>City of San Mateo</b>	Participate in project steering committees; summary of meetings attended	Ongoing participation in the project steering committee for Redwood Shores; San Mateo RSAP participation pending
Sewer Authority Mid-Coastside (SAM) Wastewater Treatment Plant Resilience Project <b>(OneShoreline non-fed sponsor)</b>	SAM, HMB, Montara Water and Sanitary District, Granada Community Services District	U.S. Army Corps of Engineers (USACE) Federal Interest Determination (subject to federal support)	Secured \$50,000 earmark in FY26 federal appropriations bill for USACE to start project and determine federal interest; kickoff meeting in May 2026

### Task 3: Assist Jurisdictions and Partners with Planning for, Supporting the Early Warning of, and Reducing the Impacts of Extreme Storms

## FY 2025-26 Workplan Status

Title/Scope of Work	Partners	Deliverables	Status and Accomplishments
Flood Early Warning System (FEWS) expansion ( <b>OneShoreline</b> )	Potential City (Creek): Atherton (Atherton), HMB (Pilarcitos), County/RWC/San Carlos (Cordilleras), San Carlos (Pulgas), San Mateo (San Mateo)	At 2 new locations, secure land rights, procure and install gauges for stream flow (and rain, if feasible)	Installed new stream gauge monitoring station on Atherton Channel; identified potential sites for a new gauge on Pilarcitos Creek and working with HMB to secure land rights
FEWS maintenance ( <b>OneShoreline</b> )	County, Belmont, SSF, SFO, RCD, Green Hills Country Club, others as system is expanded	Acquire parts; ensure station operation, online interface, and alerts	Acquired equipment; maintained and operated system (hardware, interface, data sharing, and alerts)
Expand FEWS's ability to provide timely warning to emergency responders and the public ( <b>OneShoreline</b> )	County Department of Emergency Management and/or benefiting cities	Establish additional protocols and messaging for notification through dashboards or alert messaging platforms	Seasonal update of alert rosters; after-event polling of cities to capture effects of King Tides and extreme storms
Routine Maintenance of Bayside Creeks Project ( <b>OneShoreline</b> )	County, cities, Caltrans, and other agencies benefiting from maintenance on San Bruno, Cordilleras, Belmont, Atherton creeks	Secure 5-year permits to enable ongoing maintenance in creeks listed at left	5-year permits secured for San Bruno Creek, Cordilleras Creek, Atherton Channel, and Belmont Creek
Bayfront Canal and Atherton Channel Project and funding ( <b>OneShoreline</b> )	Redwood City, County, Menlo Park, US Fish and Wildlife Service	Operate, maintain, and monitor required by permits; new agreement to fund maintenance past FY25-26	Operation, maintenance, and monitoring are ongoing; funding for operations and maintenance beyond 6/30/27 requires new agreement

## Tasks 4 and 5: Support the County and Other Local Jurisdictions on Grants, Reports, Policies, and Other Efforts Related to the Work of OneShoreline

Title/Scope of Work	Partners	Deliverables	Status and Accomplishments
Track and pursue funding opportunities from state and federal agencies/legislators ( <b>OneShoreline</b> )	TBD	Description of services provided to, or on behalf of, County and other local agencies	<ul style="list-style-type: none"> <li>• Secured San Francisco Bay Restoration Authority funding for the Brisbane Living Shoreline Project</li> <li>• Submitted grant application to State Parks Div. of Boating and Waterways for Pacifica Beach Boulevard Offshore Artificial Reef Study</li> <li>• Submitted grant application to National Fish and Wildlife Foundation to model compound flood risks and nature-based solution benefits on the Bayside</li> <li>• Submitted federal earmark requests for shoreline resilience projects on the Pacific coastside</li> </ul>
Participate in working groups and task forces related to water supply and drought preparedness	<b>County</b> , participating cities, special districts, other Bay Area water supply agencies	Meeting information	Participated in Water Shortage Task Force Meetings organized by County Planning & Building; provided comments on the Admin Draft Drought Resilience Plan
Identify priority projects for FY26-27 ( <b>OneShoreline</b> )	County	List of priority projects, including 1-2 along the Coastside	Preparing work plan for FY26-27; May 18 reviewing with Board, May 27 meeting with County department heads, June 22 Board considers adoption

# Agenda Item 4D – FY26-27 Budgets and Workplan

## OneShoreline’s estimated operating funds through FY29-30

	FY2019-25		FY2025-26		FY2026-27		FY2027-28		FY2028-29		FY2029-30	
	1/1/20	7/1/25	7/1/26	7/1/27	7/1/28	7/1/29	7/1/30					
<b>Revenue:</b>												
San Mateo County		\$5,362,500	\$1,187,500	\$750,000	\$750,000	\$0	\$0					
City Contributions		\$2,235,000	\$285,000	\$300,000	\$300,000	\$0	\$0					
Other Revenue **		\$3,420,272	\$1,522,381	\$1,638,843	\$1,654,439	\$933,954	\$100,000					
		<u>\$11,017,772</u>	<u>\$2,994,881</u>	<u>\$2,688,843</u>	<u>\$2,704,439</u>	<u>\$933,954</u>	<u>\$100,000</u>					
<b>Expenditures:</b>												
Operating Expenses		\$6,292,210	\$1,634,538	\$2,929,869	\$3,535,150	\$2,757,847	\$2,166,829					
		<u>\$6,292,210</u>	<u>\$1,634,538</u>	<u>\$2,929,869</u>	<u>\$3,535,150</u>	<u>\$2,757,847</u>	<u>\$2,166,829</u>					
Reserves		\$4,725,562	\$6,085,905	\$5,844,879	\$5,014,168	\$3,190,275	\$1,123,446					

\*\* State grants and investment income

After FY26-27, changes in project expenditure amounts and a 5% annual increase in other expenses are assumed.

City Contributions for FY25-26, FY26-27, and FY27-28 are estimated as of May 15, 2026.

Beyond 6/30/29, the only identified revenue is from Flood Zones, which cannot fund activities outside Flood Zones nor sustain overall operations.

Reserves are expected to run out 12/31/30.

## OPERATING BUDGET: FY25-26 Approved and Estimated Year-End, and FY26-27 Draft

Budget item	Approved FY2025-26	Estimated Year-End FY2025-26	DRAFT FY2026-27
Revenue	\$2,701,375	\$2,994,881	\$2,688,843
Expenses – Net Personnel	\$1,076,591	\$778,339	\$924,216
Expenses – Net Operations & Support	\$1,517,008	\$856,199	\$2,005,653
Total Expenses	\$2,593,599	\$1,634,538	\$2,929,869
End of FY Balance (reserves)	\$5,435,044	\$6,085,905	\$5,844,879

# FLOOD ZONES BUDGET: FY25-26 Approved and Estimated Year-End, and FY26-27 Draft

	Colma Creek			San Bruno Creek			San Francisquito Creek		
Budget item	Approved FY25-26	Estimated FY25-26 Year-End	Draft FY26-27	Approved FY25-26	Estimated FY25-26 Year-End	Draft FY26-27	Approved FY25-26	Estimated FY25-26 Year-End	Draft FY26-27
Revenue	\$6,643,651	\$7,283,360	\$8,171,886	\$978,709	\$982,276	\$1,340,107	\$528,802	\$555,723	\$599,390
Expenses	\$15,716,433	\$14,973,281	\$3,120,100	\$1,532,017	\$1,018,925	\$2,075,600	\$1,013,195	\$967,656	\$961,600
End of FY Balance (reserves)	\$36,444,209	\$40,128,413	\$45,180,199	\$3,437,280	\$4,070,932	\$3,335,439	\$1,158,373	\$1,315,417	\$953,207

Budget item	Approved FY25-26	Estimated FY25-26 Year-End	Draft FY26-27
<p><b>CAPITAL PROJECTS BUDGET</b></p> <p><b>FY26-27 Draft</b></p> <p><b>Bayfront Canal &amp; Atherton Channel Project (BCACP)</b></p>	<p><b>BCACP \$6,900</b></p> <p><b>MBSRP \$1,451,090</b></p> <p><b>FEWS \$352,379</b></p> <p><b>BLSP \$0</b></p> <p><b>Total \$1,810,369</b></p>	<p><b>BCACP \$4,362</b></p> <p><b>MBSRP \$1,015,545</b></p> <p><b>FEWS \$365,726</b></p> <p><b>BLSP \$0</b></p> <p><b>Total \$1,385,633</b></p>	<p><b>BCACP \$4,000</b></p> <p><b>MBSRP \$889,089</b></p> <p><b>FEWS \$132,600</b></p> <p><b>BLSP \$382,625</b></p> <p><b>Total \$1,408,314</b></p>
<p><b>Millbrae &amp; Burlingame Shoreline Resilience Project (MBSRP)</b></p> <p><b>Flood Early Warning System (FEWS)</b></p> <p><b>Brisbane Living Shoreline Project (BLSP)</b></p>	<p><b>BCACP \$126,560</b></p> <p><b>MBSRP \$1,451,090</b></p> <p><b>FEWS \$173,100</b></p> <p><b>BLSP \$0</b></p> <p><b>Total \$1,750,750</b></p>	<p><b>BCACP \$71,756</b></p> <p><b>MBSRP \$1,015,545</b></p> <p><b>FEWS \$175,386</b></p> <p><b>BLSP \$0</b></p> <p><b>Total \$1,252,687</b></p>	<p><b>BCACP \$89,000</b></p> <p><b>MBSRP \$889,089</b></p> <p><b>FEWS \$132,600</b></p> <p><b>BLSP \$382,625</b></p> <p><b>Total \$1,493,914</b></p>
<p><b>End of FY Balance</b></p>	<p><b>BCACP \$40,190</b></p> <p><b>MBSRP \$0</b></p> <p><b>FEWS \$179,279</b></p> <p><b>BLSP \$0</b></p> <p><b>Total \$219,469</b></p>	<p><b>BCACP \$85,919</b></p> <p><b>MBSRP \$889,089</b></p> <p><b>FEWS \$190,340</b></p> <p><b>BLSP \$0</b></p> <p><b>Total \$1,165,348</b></p>	<p><b>BCACP \$919</b></p> <p><b>MBSRP \$0</b></p> <p><b>FEWS \$0</b></p> <p><b>BLSP \$579,875</b></p> <p><b>Total \$580,794</b></p>

## **Agenda Item 6 CEO's Report: 2026 Multijurisdictional Local Hazard Mitigation Plan (LHMP)**

**OneShoreline is participating in the 2026 update of the San Mateo County Multijurisdictional LHMP.**

**The LHMP identifies potential hazards, assesses the risks they pose, and develops actions to reduce those risks. Key hazards include flood, sea level rise, severe weather, tsunami, drought, wildfire, earthquake, dam failure, and landslide.**

**Updating the LHMP every 5 years is required to be eligible to apply for and receive FEMA hazard mitigation funding.**

**The Draft 2026 LHMP is open for public comments from Friday, May 15 – Monday, June 15.**

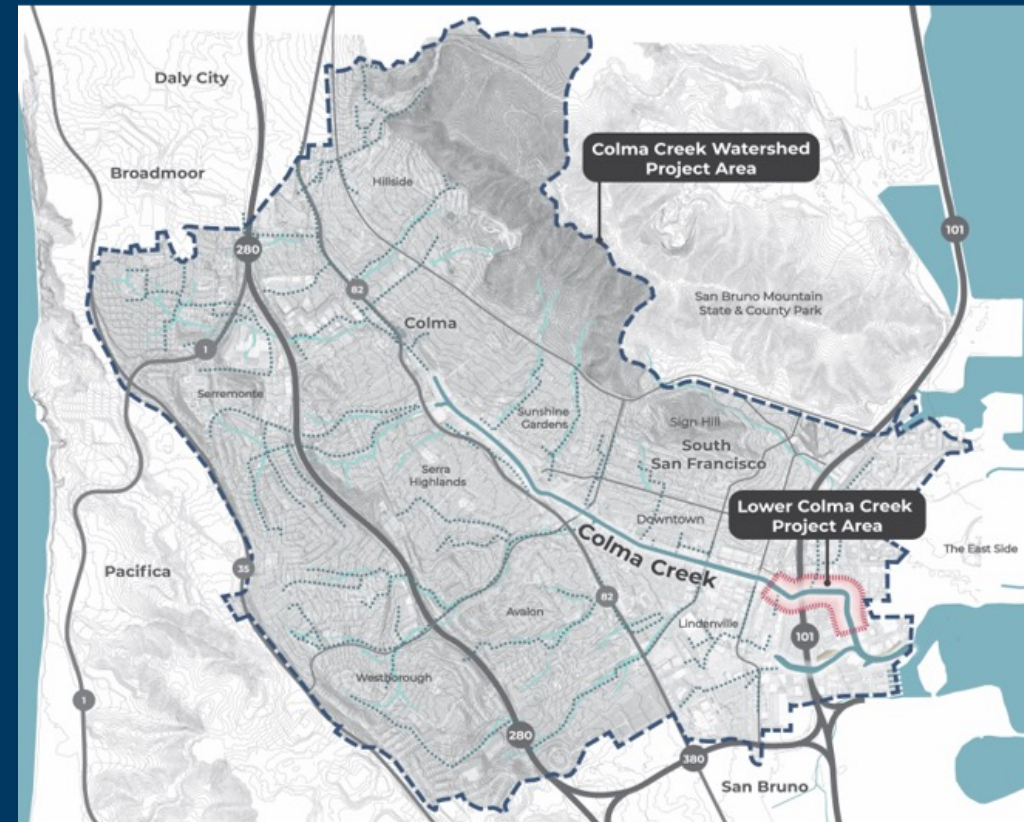
**The website to provide input into the development of the 2026 LHMP is:**

**[www.smcgov.org/dem/multijurisdictional-local-hazard-mitigation-plan](http://www.smcgov.org/dem/multijurisdictional-local-hazard-mitigation-plan)**

**Questions can be sent to [ahaddad@smcgov.org](mailto:ahaddad@smcgov.org) at the County Department of Emergency Management.**

# Agenda Item 6 - CEO's Report: Update on Colma Creek Flood Zone Projects and Maintenance Activities

Project/Activity	Status	Timeline
Routine Maintenance	Q2 walk completed April 28, finalizing scope for 2026, 5-year permit applications ongoing	Ongoing
Stewardship	3/14 Volunteer clean up event, 5/16 National River Cleanup Day event, fall 2026 engagement campaign	Ongoing
Outfall Repair/ Replacement: Hwy. 101-Utah Ave.	Notice of completion filed	Complete
Conditions Assessment	Boring and core work completed between Orange Ave and Spruce Ave, report due in May	2026 Q2
Resilience Projects: San Mateo Ave. to Utah Ave.	Design development ongoing	Concept 2026 Q3
Watershed Plan	Watershed model updated and list of potential policies, projects, and programs prepared	2027 Q2



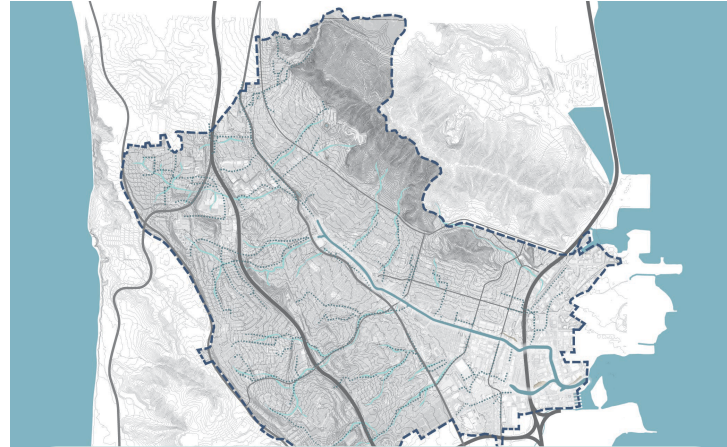
# Colma Creek Watershed Plan Concept Types Overview



## Creek and Floodplain Adaptation Concepts In/Adjacent to the Creek

### Examples:

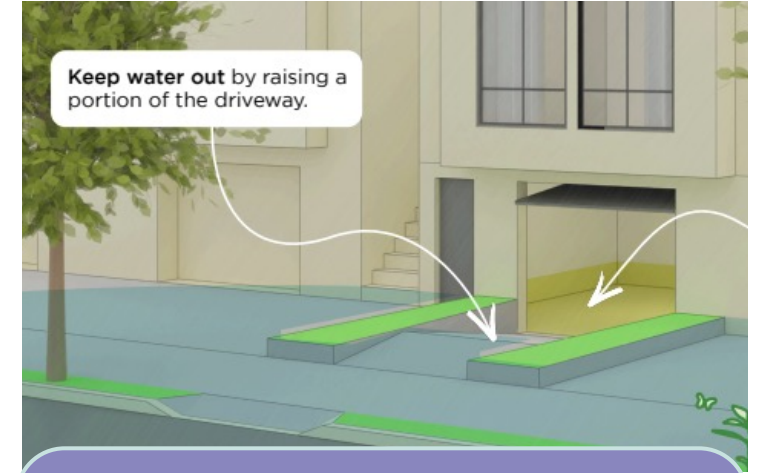
- Channel widening
- Greenbelts
- Floodable parks
- New berms or floodwalls



## Watershed Capture Concepts Detention, Retention, and Reuse across the Watershed

### Examples:

- Green schoolyards
- Floodable streets
- Grant programs for GSI on private parcels



## Flood Proofing and Flood Resilience Reduce Residual Risk in Areas Adjacent to the Creek

### Examples:

- Building code requirements
- Grant programs for retrofits
- Voluntary property acquisition policies or programs



## **Scheduled Board meetings before September:**

**June 22, 2026 at 4:00 PM**

**~~July 27, 2026 at 4:00 PM~~**

**August 24, 2026 at 4:00 PM**